

**UCC Library and UCC researchers have made this item openly available.**  
 Please [let us know](#) how this has helped you. Thanks!

<b>Title</b>	Proteomic study of proteolysis during ripening of cheddar cheese made from milk over a lactation cycle
<b>Author(s)</b>	Hinz, Katharina; O'Connor, Paula M.; O'Brien, Bernadette; Huppertz, Thom; Ross, R. Paul; Kelly, Alan L.
<b>Publication date</b>	2012-05-02
<b>Original citation</b>	Hinz K, O'Connor PM, O'Brien B, Huppertz T, Ross RP, Kelly AL. (2012). Proteomic study of proteolysis during ripening of Cheddar cheese made from milk over a lactation cycle. Journal of Dairy Research, Volume 79, 2: 176-184. doi: 10.1017/S0022029912000027
<b>Type of publication</b>	Article (peer-reviewed)
<b>Link to publisher's version</b>	<a href="http://journals.cambridge.org/action/displayAbstract?fromPage=online&amp;aid=8540004&amp;fulltextType=RA&amp;fileId=S0022029912000027">http://journals.cambridge.org/action/displayAbstract?fromPage=online&amp;aid=8540004&amp;fulltextType=RA&amp;fileId=S0022029912000027</a> <a href="http://dx.doi.org/10.1017/S0022029912000027">http://dx.doi.org/10.1017/S0022029912000027</a> Access to the full text of the published version may require a subscription.
<b>Rights</b>	© Proprietors of Journal of Dairy Research 2012
<b>Item downloaded from</b>	<a href="http://hdl.handle.net/10468/1110">http://hdl.handle.net/10468/1110</a>

Downloaded on 2022-03-06T10:51:08Z

## Proteomic study of proteolysis during ripening of Cheddar cheese made from milk over a lactation cycle

Katharina Hinz<sup>1</sup>, Paula M O'Connor<sup>2</sup>, Bernadette O'Brien<sup>3</sup>, Thom Huppertz<sup>4</sup>, R Paul Ross<sup>2</sup> and Alan L Kelly<sup>1\*</sup>

<sup>1</sup> School of Food and Nutritional Sciences, University College Cork, Cork, Ireland

<sup>2</sup> Teagasc Food Research Centre, Moorepark, Fermoy, Ireland

<sup>3</sup> Animal and Grassland Research and Innovation Centre, Teagasc, Moorepark, Fermoy, Ireland

<sup>4</sup> NIZO food research, Ede, The Netherlands

Received 27 May 2011; accepted for publication 15 December 2011; first published online 27 February 2012

Milk for cheese production in Ireland is predominantly produced by pasture-fed spring-calving herds. Consequently, there are marked seasonal changes in milk composition, which arise from the interactive lactational, dietary and environmental factors. In this study, Cheddar cheese was manufactured on a laboratory scale from milk taken from a spring calving herd, over a 9-month lactation cycle between early April and early December. Plasmin activity of 6-months-old Cheddar cheese samples generally decreased over ripening time. One-dimensional urea-polyacrylamide gel electrophoresis (PAGE) of cheese samples taken after 6 months of ripening showed an extensive hydrolysis of caseins, with the fastest hydrolysis of  $\alpha_{s1}$ -caseins in cheeses made in August. A proteomic comparison between cheeses produced from milk taken in April, August and December showed a reduction in levels of  $\beta$ -casein and appearance of additional products, corresponding to low molecular weight hydrolysis products of the caseins. This study has demonstrated that a seasonal milk supply causes compositional differences in Cheddar cheese, and that proteomic tools are helpful in understanding the impact of those differences.

**Keywords:** Bovine milk, lactation stage, cheese, proteolysis, 2-DE.

Milk production in Ireland, as well as some other countries, including New Zealand, is seasonal, in contrast to most other countries in the world. Milk production in Ireland reaches a peak in May–June, with a trough in December–January when most cows have reached the end of lactation (Donnelly & Barry, 1983; Auldist et al. 2006). The seasonality of milk supply in Ireland is the biggest obstacle for the dairy industry, especially Irish cheese manufacturers, as the production of high quality products in the winter months cannot be guaranteed (Lucey & Fox, 1992). Seasonal changes in milk composition reflect both lactational and nutritional influences. High quality cheese is produced throughout most of the lactation but, in seasonal countries, it can be difficult to produce good quality cheese during the late autumn/winter period, due to the reduced volume and the poor quality in late lactation milk (Lucey, 1996).

Lactation stage is the major factor affecting the characteristics of milk, such as fat, protein, lactose and main mineral

contents (Decaen & Adda, 1970; Schutz et al. 1990). As lactation progresses, levels of protein, fat, plasmin and free fatty acids and somatic cell count (SCC) increase, and levels of lactose and casein, as a percentage of total protein, decrease (Lucey et al. 1992). The most significant compositional changes occur in late lactation and should therefore be observed in milk for manufacturing in Ireland in the months from September to December. Such changes may directly affect the processing properties in terms of the quality and yield of certain dairy products, e.g., cheese. Late-lactation milk is characterised by a long rennet-clotting time and low gel firmness (White & Davies, 1958b; Lucey et al. 1991) which leads to decreased syneresis and quality defects in Cheddar cheese, e.g., a high moisture content (O'Keeffe, 1984). Compositional changes in casein from milks of herds in late lactation resemble those associated with the secretory disturbance in milk from individual cows, and have been attributed predominantly to selective proteolysis of individual casein components by the alkaline milk proteinase (Barry & Donnelly, 1981). Traditionally, most Irish Cheddar cheese factories stopped production during the winter

\*For correspondence; e-mail: a.kelly@ucc.ie

months due to these quality problems and the lack of sufficient good quality milk (Lucey, 1996).

A number of studies have been undertaken in relation to Cheddar cheese yield and stage of lactation (Donnelly & Barry, 1983; O'Keefe, 1984; Barbano et al. 1991; Kefford et al. 1995; Ostensen et al. 1997; Sapru et al. 1997; Coulon et al. 1998; Hickey et al. 2006), but no study has examined in detail the changes in proteolysis during ripening at different lactation stages, particularly using two-dimensional electrophoresis (2-DE) in combination with Matrix-Assisted-Laser-Desorption/Ionization Time-of-Flight (MALDI-ToF) mass spectrometry. Therefore, Cheddar cheese was made on a one-litre laboratory scale over a complete lactation cycle between April and December. Cheddar cheese samples were ripened over a period of 6 months and regularly sampled to follow the ripening process. Proteomic tools were applied to study the changes in milk and cheese which occur over a full lactation period.

## Materials and Methods

### Milk

Fresh raw milk was obtained from a spring calving Friesian herd (245 cows) at 6 different time points (April, May, July, August, October and December, 2006) from the Teagasc Dairy Production Research Centre, Moorepark (Fermoy, Ireland) over a full lactation period. Diet consisted of grazed grass for most of the lactation with concentrate supplementation at early and late lactation. During the main grass-growing period (major portion of the lactation), cows grazed to a post-grazing grass height of 60 mm. The cows received 3 kg of concentrate per day from calving to 1 May and 2 kg of concentrate per day from 1 October to 20 December.

### Cheese manufacture

The milk obtained was standardised prior to making miniature cheeses; part of the milk was separated at 55 °C and the resultant skim milk was added to whole milk to give a standardised milk with a casein:fat ratio of 0.7:1.0. Milk was then batch-pasteurised at 63 °C for 30 min and held overnight at 4 °C prior to processing. Maxiren 180 (DSM Food Specialties, Delft, The Netherlands) was used as coagulant. A defined strain starter culture (DVS, R604 Y, Chr. Hansen, Roskilde, Denmark) was added to the milk (200 µl/l) at 30 °C and Cheddar cheese was manufactured according to the procedure described by Shakeel-Ur-Rheman et al. (1998) with the modification that cheeses were produced on a 1-litre laboratory scale. Cheeses were subsequently ripened at 8 °C for 6 months.

### Milk sampling and analysis

Each milk sample was analysed for gross composition using a Milkoscan 605 instrument (Foss Electric, Hillerød,

Denmark). The somatic cell count (SCC) of the milks was measured once per sample using a Somacount 300 (Bentley Instruments, Inc., USA). Plasmin activity in milk was determined in duplicate using the method by Richardson & Pearce (1981), and expressed in AMC units (nanomoles of AMC released per minute)/ml.

### Chymosin and plasmin hydrolysis

A chymosin hydrolysate was prepared by making up a 3% (w/v) solution sodium caseinate (Kerry Ingredients, Listowel, Ireland) in distilled water (3 l). The pH of this solution was adjusted to 5.6 using a 2 M HCl and 900 ml Maxiren (Carbon Group, Ringaskiddy, Ireland) was added. This solution was incubated at 37 °C in a water bath for 40 min and then the enzyme was heat-inactivated at 70 °C for 10 min. The sample was then freeze-dried (Manifold, Edwards Modulyo 4K, Crowley, West Sussex, UK) and used for two-dimensional gel electrophoresis (2-DE).

For the plasmin hydrolysate, plasminogen was first activated to active plasmin. An activation buffer containing 0.05 M Tris, 0.02 M lysine, 0.1 M NaCl, and 25% glycerol (v/v) (Sigma-Aldrich) was made up and adjusted to a final pH of 8.5 using 1 M HCl. Bovine plasminogen (50 mg) (Sigma-Aldrich, St. Louis, MO, USA) was dissolved in 6 ml of this buffer and the solution was filtered through a 0.45 µm filter (Sartorius AG, Goettingen, Germany). Separately, 25 µg urokinase (Sigma-Aldrich, St. Louis, MO, USA) was dissolved in 40 ml of the activation buffer. A sample consisting of 5 ml of this urokinase solution was filtered through a sterilised 0.45-µm filter. The filtered urokinase solution was then added to the plasminogen solution and the mixture incubated at 37 °C for 17 h. A 2% sodium caseinate solution (1 litre) was adjusted to pH value 7.5 using 1 M NaOH. The plasmin solution was added to the sodium caseinate solution and incubated at 37 °C for 8 h and was then freeze-dried and used for 2-DE.

### Cheese sampling and analysis

One-day-old cheeses were analysed in triplicate for fat (International Dairy Federation (IDF), 1986a), salt (IDF, 1988), total nitrogen (macro-Kjeldhal method; IDF, 1986b) and moisture content by drying to a constant weight at 102 °C (IDF, 1982). Cheeses after 1 d and 6 months ripening were also analysed for plasmin activity using the above method (Richardson & Pearce 1981) and results are expressed as AMC units/g cheese.

## Proteolysis in cheese

### One-dimensional gel electrophoresis

One dimensional urea-polyacrylamide gel electrophoresis (PAGE) was used to study the proteolysis occurring in cheese over the ripening period (1 d, 2 and 4 weeks, 3 and 6

months). Urea-PAGE of cheese samples, loaded on a total protein basis, was performed as described by Rynne et al. (2004). Gels were then scanned using a calibrated GS-800 densitometer (Bio-Rad Laboratories Ltd, Hemel Hempstead, Herts, UK).

#### *Two-dimensional gel electrophoresis (2-DE)*

2-DE was performed on the cheese samples taken at 1 d, 3 and 6 months of age. Isoelectric focusing (IEF) was carried out using a PROTEAN IEF cell (Bio-Rad, Hercules, CA, USA) according to the manufacturer's instructions. Cheese samples (10 mg) were mixed with a rehydration buffer (8 M urea, 2% CHAPS, 50 mM DTT, 0.2% Bio-Lyte 3/10 ampholyte, 0.001% Bromophenol Blue). Mixed samples (125 µl) were loaded on to immobilised pH gradient (IPG) strips (pH 4–7, 7 cm, Bio-Rad) which were then passively rehydrated for 8 h, followed by active rehydration for 8 h. The IPG strips were then focused at 20 °C until 20 kV was reached. After focusing, the strips were immediately used for second-dimension sodium dodecyl sulphate polyacrylamide gel electrophoresis (SDS-PAGE), which was carried out under reducing conditions using 15% acrylamide gels, in a Criterion® Dodeca Cell unit (Bio-Rad, USA). The focused IPG strips were equilibrated with 50 mM Tris/HCl, pH 8.8, 6 M urea, 30% glycerol, 2% SDS and 130 mM DTT and alkylated in the same buffer containing 130 mM iodoacetamide instead of DTT. The gels were then run at 200 V for 50 min, stained using colloidal Coomassie blue (Chevalier et al. 2004) and images from stained gels were digitised at 300 dpi with a calibrated GS-800 densitometer (Bio-Rad Laboratories).

#### *In-gel digestion and matrix-assisted-laser-desorption/ionization time-of-flight*

Relevant protein spots were excised from the 2D-gels and 50 µl acetonitrile was added to each gel spot and left at room temperature for 15 min (Shevchenko et al. 1996). Acetonitrile was then removed and 25 µl of 25 mM ammonium bicarbonate was added for 10 min to rehydrate the spots. This procedure was repeated twice more and then the spots were dehydrated with 50 µl acetonitrile. The acetonitrile was subsequently removed and the spots were dried at 37 °C for 20 min in a heating block.

Sequencing-grade modified trypsin (Promega Corporation, Madison, WI, USA) was dissolved in 25 mM ammonium bicarbonate up to a final concentration of 10 ng/µl. A 3 µl aliquot of trypsin solution was added to each spot and this was allowed to absorb fully into the spot before further 3 µl aliquots of trypsin were added until the spot was fully rehydrated. Ten microlitres of 25 mM ammonium bicarbonate was added to cover the spots. Each gel spot was kept on ice during rehydration with trypsin to prevent trypsin autodigestion peaks. Gel spots were digested in a Discover Microwave (CEM Corporation, Mathews, NC, USA) at 50 W at 55 °C for 15 min. Digests were allowed to

cool and supernatant was removed to a fresh Eppendorf tube. To each gel spot, 10 µl of 25 mM ammonium bicarbonate in 50% acetonitrile was added, after 15 min this was added to the original supernatant.

Mass spectrometry was performed on the gel spot extracts with an Axima TOF<sup>2</sup> MALDI-ToF mass spectrometer (Shimadzu Biotech, Manchester, UK). A 0.5 µl aliquot of matrix solution ( $\alpha$ -cyano 4-hydroxy cinnamic acid, 10 mg/ml in 50% acetonitrile–0.1% (v/v) trifluoroacetic acid) was deposited onto the target and left for 5 s before being removed. The residual solution was allowed to air-dry and 0.5 µl of the sample solution was deposited onto the pre-coated sample spot. A 0.5 µl aliquot of matrix solution was added to the deposited sample and allowed to air-dry. The sample was subsequently analysed in positive-ion reflectron mode.

Protein identification was carried out via peptide mass fingerprinting (PMF) using the Mascot search engine (<http://www.matrix-science.com>). The monoisotopic, positive ion data  $\pm 0.25$  Da was searched using the following parameters: NCBI nr database or Swiss Prot, taxonomy mammalian, trypsin digest with one missed cleavage. Variable modifications, including cysteine modified by carbamidomethylation, and methionine modified by oxygen were also checked.

Tandem mass spectrometry (MS/MS) was carried out on peaks from spots that did not score well using PMF. The MS/MS positive ion, averaged data  $\pm 0.8$  Da was again searched using the Mascot search engine (<http://www.matrix-science.com>) and the following parameters: NCBI nr database or Swiss Prot, taxonomy mammalian trypsin digest with one missed cleavage or semi trypsin with one missed cleavage, variable modifications including cysteine modified by carbamidomethylation, methionine modified by oxygen and/or Acetyl N-terminal.

## **Results and Discussion**

### *Milk composition*

The composition of raw milk over the course of lactation is presented in Table 1. The concentration of protein and fat in the raw milk increased from early-lactation (April and May) to late-lactation (October and December), while lactose concentration decreased over the same time period. These results are in agreement with previous studies (Sapru et al. 1997; Hickey et al. 2006). The SCC of milk remained consistent over the trial period. Typically, late-lactation milk has elevated SCC, even in the absence of mastitis, as lactation progresses towards involution (Auldist & Hubble, 1998). However, a strict cow drying-off regime was in place in this trial, where all the cows were dried off at a yield of 7 kg milk per day. The pH of raw milk increased slightly over the lactation cycle. The lower lactose level and slightly increased pH of milk are characteristic of both elevated SCC and late lactation (Auldist & Hubble, 1998).

**Table 1.** Composition of raw milk used for cheese manufacturing and composition of Cheddar cheese on day 1 after manufacture at various stages of a full lactation

Composition	Early-lactation		Mid-lactation		Late-lactation	
	April	May	July	August	October	December
Raw milk						
Protein [g/100 g]	3.25	3.33	3.62	3.54	3.73	3.99
Fat [g/100 g]	4.82	4.52	3.97	4.56	4.80	5.53
Lactose [g/100 g]	4.68	4.59	4.47	4.53	4.30	4.24
TS [g/100 g]	13.62	13.28	12.90	13.48	13.71	14.65
pH	6.60	6.66	6.70	6.68	6.65	6.70
SCC $\times 10^{-3}$ [cells/ml]	342	385	382	346	383	366
Plasmin activity [AMC units/ml milk]	0.019	0.045	0.033	0.063	0.061	0.024
Cheese						
Moisture [g/100 g]	32.0	33.8	30.0	32.4	36.3	34.8
Fat [g/100 g]	30.0	30.0	31.0	30.3	31.0	30.0
Protein [g/100 g]	26.3	24.1	24.3	26.7	23.3	26.9
Salt [g/100 g]	1.84	1.92	1.86	1.82	2.02	2.03
pH	5.28	5.27	5.27	5.28	5.30	5.30

### Cheese composition

The gross composition of the prepared miniature Cheddar cheeses (made on a one-litre laboratory scale) is given in Table 1; cheeses made in April or May (early-lactation milk) had the lowest moisture content and cheeses made in October or December (late-lactation milk) had the highest moisture content. There were no major differences in the fat content of cheese between the different lactation stages. The protein content of miniature Cheddar cheese made in April–May (early-lactation milk) was slightly lower than that of cheese made in July–August. However, the protein content of cheese made in October was the lowest and the protein content of cheese made in December was the highest of the miniature cheeses made. The salt content and pH of cheeses were not affected by stage of lactation. Moisture content was thus the major compositional difference between the cheeses, and the higher moisture content found in cheeses from late-lactation milk is in agreement with earlier studies (O’Keeffe, 1984; Lucey 1996, Hickey et al. 2006). It is thought that the increased moisture content in cheese from late-lactation milk is related to diet (Lucey et al. 1992; Kefford et al. 1995) and may influence biochemical reactions, due to increased activity of micro-organisms and enzymes (Lawrence & Gilles, 1980; Hickey et al. 2006).

### Plasmin activity

Plasmin assays on raw milk samples showed the highest plasmin activity in August and October (Table 1). Plasmin is primarily secreted in normal milk as plasminogen and is activated during storage (Driessen & van der Waals, 1978; Alichanidis et al. 1986) or while milk is held in the mammary lumen before milking (Donnelly & Barry, 1983; Schaar, 1985). Plasmin activity in milk increases at the end of lactation (Bastian & Brown, 1996), probably because of

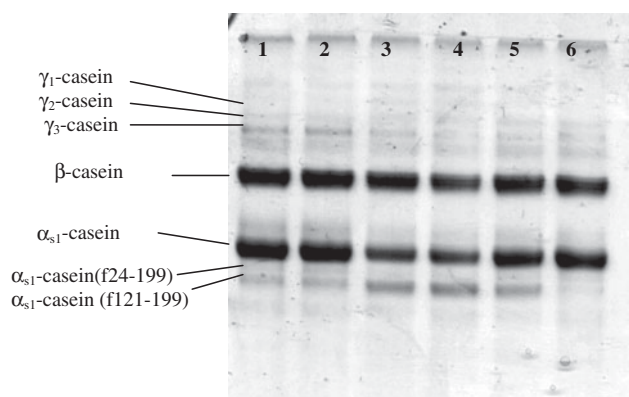
**Table 2.** Plasmin activity of cheddar cheese samples made in different months on 1 d and 6 months ripening

	Plasmin activity [AMC/g cheese]	
	Cheese day 1	Cheese 6 months
April	0.185	0.154
May	0.217	0.133
July	0.050	0.053
August	0.138	0.412
October	0.211	0.198
December	0.187	0.100

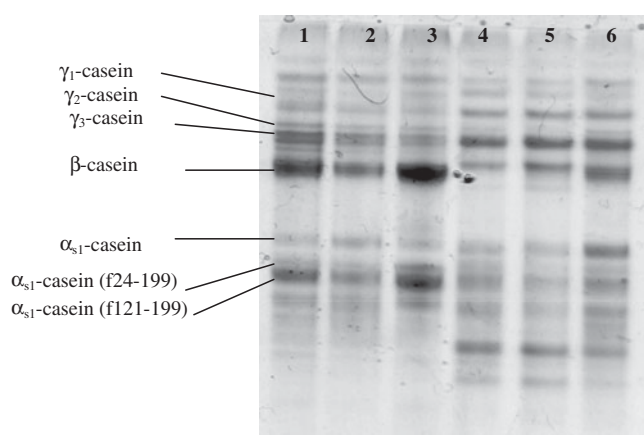
increased transport of plasminogen into the mammary gland (Schaar, 1985; Bastian et al. 1991). Saeman et al. (1988) correlated plasmin activity with increasing SCC; however, such a correlation was not found in this study.

Cheddar cheese samples taken 1 d or 6 months after manufacture showed no clear seasonal trend in plasmin activity (Table 2). The comparison of plasmin activity on a protein basis in Cheddar cheese samples after 6 months ripening and plasmin activity of the original cheese milk showed that the plasmin activity in Cheddar cheese was up to 8 times higher than in the original cheese milk in this study. Ollikainen & Nyberg (1988) showed that, on a protein basis, plasmin activity in Swiss-type cheese was 2–3 times higher than that in cheese milk. They suggested that, because the level of casein in their assay mixtures was higher for milk than for cheese, casein may behave as an inhibitor in the assay mixture. Another reason for observing higher plasmin activity in cheese than in milk is that inhibitors of plasmin and plasminogen activator are removed from cheese when the whey is drained (Bastian & Brown, 1996). Rynne et al. (2008) reported that plasmin activity in cheese increased over a 6 months ripening period, presumably due to activation of plasminogen (Barrett et al. 1999), but this was not consistently observed in this study.





**Fig. 1.** Urea-PAGE electrophoretograms of 1-d-old Cheddar cheese made in (1) April; (2) May; (3) July (4) August; (5) October; or (6) December.

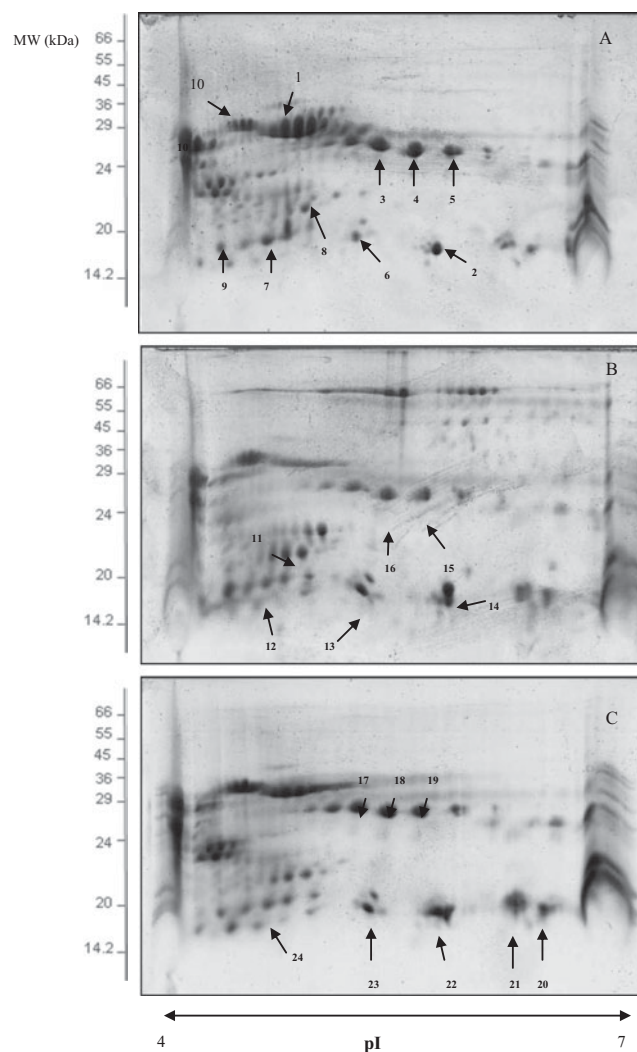


**Fig. 2.** Urea-PAGE electrophoretograms of 6-months-old Cheddar cheese samples made in (1) April; (2) May; (3) July; (4) August; (5) October; or (6) December.

### Gel electrophoresis

Urea-PAGE electrophoretograms of Cheddar cheese samples were obtained at different time points of the ripening process. The hydrolysis of  $\beta$ -casein in all cheeses was clearly indicated by the decrease in the intensity of the  $\beta$ -casein band and the formation of  $\gamma_1$ -caseins ( $\beta$ -casein f106–209),  $\gamma_2$ -casein ( $\beta$ -casein f29–209) and  $\gamma_3$ -caseins ( $\beta$ -casein f108–209) (Figs. 1 & 2) which are the primary breakdown products of  $\beta$ -casein by plasmin (Bastian & Brown 1996; Sousa et al. 2001). Protein patterns on day 1 after manufacture (Fig. 1) of cheeses in October and December showed less intact  $\beta$ -caseins in parallel with increased levels of  $\gamma$ -caseins, compared with cheeses on the same day of ripening but manufactured in early lactation. Hydrolysis of  $\alpha_{s1}$ -casein was minimal in all of the cheeses at day 1.

Cheese samples taken after 6 months ripening showed more extensive hydrolysis of the caseins (Fig. 2). Cheeses



**Fig. 3.** Two-dimensional gel electrophoretograms of cheeses made in April (a), August (b) or December (c) separated under reducing conditions using a 7 cm pH 4–7 pI range for the first dimension and a 12% gradient acrylamide SDS-PAGE gel for the second dimension.

made in April or May showed no difference in the intensity of the hydrolysis of  $\alpha_{s1}$ -casein, while cheeses made in August showed the most extensive proteolysis of  $\alpha_{s1}$ -casein after 6 months ripening. Hydrolysis of  $\alpha_{s1}$ -casein is primarily due to chymosin, while hydrolysis of  $\beta$ -casein is mainly due to plasmin (Barrett et al. 1999). Cheese made in December showed less hydrolysis of  $\alpha_{s1}$ -casein than cheese made in August or October. Hydrolysis of  $\beta$ -casein was slower than that of  $\alpha_{s1}$ -casein in all cheeses, which is in agreement with the trends reported previously for full-fat Cheddar cheese (Kelly et al. 1996; Fenelon & Guinee, 2000). Cheese made in July showed the highest level of residual intact  $\beta$ -casein. Cheese made in August and October showed the most extensive proteolysis of  $\beta$ -casein, with increase in the intensity of bands for the  $\gamma$ -caseins. Those results are consistent with the higher plasmin activity found in this

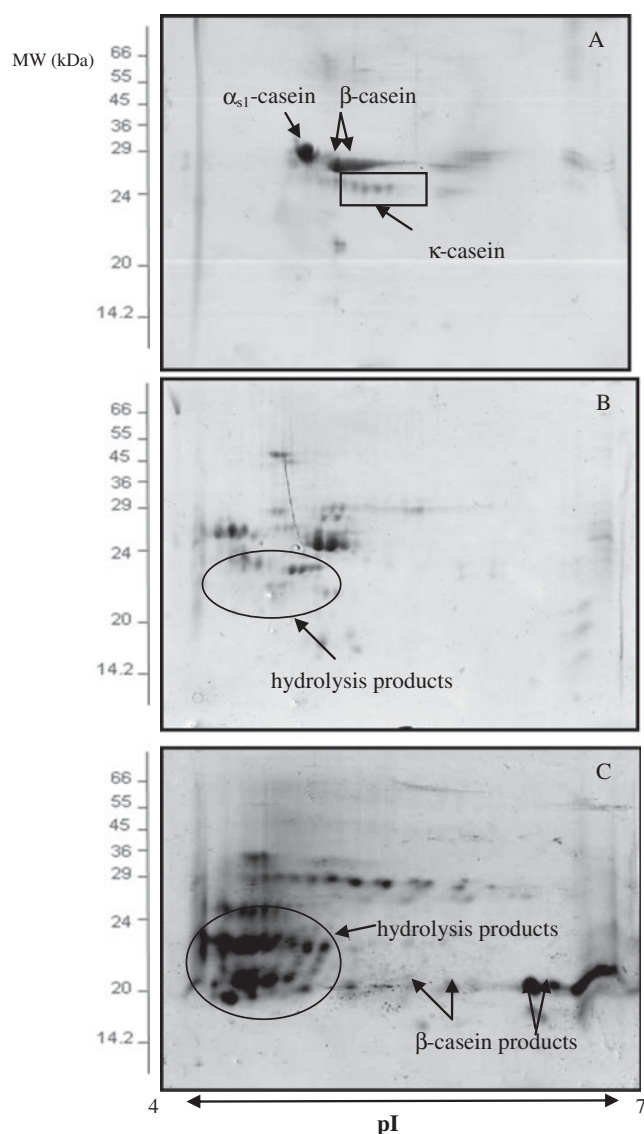
**Table 3.** Identification of spots from the 2-D gels of cheeses produced at different lactation stages, by peptide mass fingerprinting using MALDI-ToF†

Spot no.	Identified protein	Ref. Swiss Prot	Mol. mass (kDa) theor/ obs	pI theor/ obs	% Cov.	Peptides	Peptides found	Protein Cov.
1	$\beta$ -casein	P02666	23·58/30·0	5·13/4·8	21	7	106–113; 170–176; 177–183; 184–202; 184–202; 184–209; 170–209; 184–209	106–209
2	$\beta$ -casein	P02666	23·58/18·0	5·13/5·9	17	9	170–176; 177–183; 177–202; 184–202; 184–202; 184–202; 184–209; 184–209; 184–209	170–209
3	$\beta$ -casein	P02666	23·58/27·5	5·13/5·5	26	6	106–113; 170–183; 177–183; 184–202; 184–202; 184–209	106–209
4	$\beta$ -casein	P02666	23·58/27·0	5·13/5·7	21	7	106–113; 170–183; 177–183; 184–202; 184–202; 184–209; 184–209	106–209
5	$\beta$ -casein	P02666	23·58/27·0	5·13/5·9	17	4	170–183; 177–183; 184–209; 184–209	170–209
6	$\beta$ -casein	P02666	23·58/19·8	5·13/5·4	17	3	170–183; 177–183; 184–209	170–209
7	$\alpha_{s1}$ -casein	P02662	22·97/19·8	4·87/4·7	22	4	104–119; 106–119; 120–132; 133–151	104–151
8	$\beta$ -casein	P02666	23·58/22·5	5·13/5·0	19	2	170–183; 184–209	170–209
9	$\beta$ -casein	P02666	23·58/19·5	5·13/4·3	19	2	170–183; 184–209	170–209
10	$\alpha_{s1}$ -casein	P02662	22·97/22·9	4·87/4·4	10	2	80–90; 91–100	80–100
11	$\alpha_{s1}$ -casein	P02662	23·58/22·5	4·87/4·8	28	5	8–22; 91–100; 104–119; 106–119; 133–151	8–151
12	$\alpha_{s1}$ -casein	P02662	22·97/19·5	4·87/4·7	28	5	8–17; 91–100; 104–119; 133–151; 133–151	8–151
13	$\alpha_{s1}$ -casein	P02662	22·97/18·0	4·87/5·1	23	5	8–22; 84–100; 91–100; 133–151; 133–151	8–151
14	$\beta$ -casein	P02666	23·58/18·0	5·13/5·8	17	4	170–183; 184–202; 184–202; 191–202	170–202
15	$\beta$ -casein	P02666	23·58/27·5	5·13/5·7	17	4	170–183; 184–202; 184–202; 191–202	170–202
16	$\beta$ -casein	P02666	23·58/27·5	5·13/5·5	17	4	170–183; 184–202; 184–202; 191–202	170–202
17	$\beta$ -casein	P02666	23·58/29·0	5·13/5·4	17	4	170–183; 184–202; 184–202; 191–202	170–202
18	$\beta$ -casein	P02666	23·58/29·0	5·13/5·5	17	5	106–113; 170–183; 184–202; 184–202; 191–202	106–202
19	$\beta$ -casein	P02666	23·58/29·0	5·13/5·7	17	5	106–113; 170–183; 184–202; 184–202; 191–202	106–202
20	$\beta$ -casein	P02666	23·58/20·5	5·13/6·5	14	4	170–183; 184–202; 184–202; 191–202	170–202
21	$\beta$ -casein	P02666	23·58/20·5	5·13/6·4	17	5	106–113; 170–183; 184–202; 184–202; 191–202	106–202
22	$\beta$ -casein	P02666	23·58/20·5	5·13/5·7	14	4	170–183; 184–202; 184–202; 191–202	170–202
23	$\beta$ -casein	P02666	23·58/20·5	5·13/5·4	14	5	170–183; 177–183; 184–202; 184–202; 191–202	170–202
24	$\alpha_{s1}$ -casein	P02662	22·97/20·5	4·87/4·8	28	5	8–22; 91–100; 104–119; 106–119; 133–151	8–151

† Protein reference (Ref.) correspond to the Swiss-Prot/NCBI accession number; % cov. refers to sequence coverage. Theoretical molecular mass and isoelectric point (pI) of proteins are as according to the amino acid and without consideration of degradation or modifications. Observed molecular mass and isoelectric point (pI) are as observed with the position of the corresponding spots on the 2-DE gels

cheese (Table 2). Cheeses made in August, October or December showed a higher degree of proteolysis of  $\beta$ -casein compared to cheese made in April, May or July. This is also

in agreement with the plasmin activity found in those cheeses. A clear increase in the intensity of  $\gamma$ -caseins can be observed in the cheese made in August.



**Fig. 4.** Two-dimensional gel electrophoretograms of sodium caseinate (a) sodium caseinate incubated with (b) chymosin for 40 min or (c) plasmin for 8 h, separated under reducing conditions using a 7 cm pH 4–7 pI range for the first dimension and a 12% gradient acrylamide SDS-PAGE gel for the second dimension. Spots in (a) were tentatively identified by reference to Holland et al. (2004) and Larsen et al. (2010).

#### Comparison of the 2-DE electrophoretic patterns of cheddar cheese

The protein patterns in Cheddar cheese ripened for 6 months and produced at different lactation stages were analysed by using 2-DE. The resulting protein maps (Fig. 3) compare Cheddar cheese made in April (A), August (B), and December (C). The pattern of spots found in cheese produced in April was different compared with that of Cheddar cheese produced in August or December. During ripening, both  $\alpha_{s1}$ - and  $\beta$ -casein were progressively hydrolysed in all cheeses. However, more low-molecular weight

spots, presumably proteolysis products, can be seen in the 2-DE electrophoretogram of cheese produced in August and December, which is in agreement with observations by urea-PAGE (Fig. 2) results for those cheeses.

To identify some of proteolysis products in cheeses made in April, August and December MALDI-ToF mass spectrometry was performed. Identification of the 24 spots analysed are shown in Table 3. Of the polypeptides identified, 5 spots were identified as  $\alpha_{s1}$ -casein products with apparent molecular masses from 18.0 to 22.9 kDa and apparent isoelectric points from 4.4 to 5.1; 18 spots were identified as  $\beta$ -casein products (18.0–29.0 kDa, pI=4.3–6.5). The spots identified here for  $\beta$ -casein include molecular masses which are higher than the parent proteins, which is in agreement with the study of Creamer & Richardson (1984), who found that molecular masses of bovine casein found in SDS-PAGE were too high compared with the sequence calculated estimates. However, intact  $\alpha_{s1}$ -casein has a molecular mass of 22 974 kDa, while  $\beta$ -casein has a molecular mass of 23 583 kDa. There were far more proteolysis products originating from  $\beta$ -casein than from  $\alpha_{s1}$ -casein, which is as expected as plasmin mainly hydrolyses  $\beta$ -casein in cheese (Fox & McSweeney, 1996). Most of the spots identified corresponded to proteolysis products of the caseins (e.g., 3, 4, 5, 15, 16, 17, 18, 19), probably originating from the activity of the principal indigenous milk protease plasmin and chymosin, and spots 14, 20 and 21 are apparently low molecular weight breakdown products of  $\beta$ -casein that have a very high isoelectric point.

The identification of the proteolysis products in cheeses (Table 3) suggests that they are mainly products of plasmin. However, to further verify if the proteolysis products were mainly due to plasmin, a 2-DE comparison of hydrolysis of sodium caseinate by plasmin or chymosin was undertaken. The protein pattern of sodium caseinate is shown in Fig. 4a. In comparison, sodium caseinate incubated with chymosin (Fig. 4b) showed proteolysis products occurring in the lower pI region of the 2-D gel. However, the 2-D gel of sodium caseinate incubated with plasmin was clearly different compared with that of sodium caseinate or sodium caseinate incubated with chymosin; more proteolysis products can be seen below the  $\alpha_{s1}$ -casein region and in the lower molecular weight and higher pI region of the gel. Moreover, a comparison of Fig. 3 with Fig. 4c shows that proteolysis products present in sodium caseinate incubated with plasmin might show similar electrophoretic behaviour to those present in the 2-D gel of Cheddar cheese samples (e.g., spots 2, 5, 13, 14, 21, 22, 23, 24). This further substantiates the previous identification of spots as originating from hydrolysis by plasmin or chymosin.

#### Conclusion

There were clearly differences in milk samples obtained over lactation stage. The major compositional difference between cheeses manufactured at different stages of lactation was



moisture, which correlated positively with advancing lactation. One- and 2-DE gels showed proteolysis during 6 months ripening was more developed in later lactation stages. The proteomic patterns of Cheddar cheeses produced at different lactation stages were investigated in detail and 24 spots were identified. The data suggests that the variability in hydrolysis of caseins and derived low molecular mass products in cheese is mainly due to plasmin. This finding may be of interest to the cheese manufacturers as the seasonality of milk supply in some countries cannot guarantee the production of high quality products (e.g., Cheddar cheese) in certain months.

Funding for this research was provided under the National Development Plan 2007–2013, through the Food Institutional Research Measure, administered by the Department of Agriculture, Fisheries and Food, Ireland.

## References

- Alichanidis E, Wrathall JHM & Andrews AT 1986 Heat stability of plasmin (milk proteinase) and plasminogen. *Journal of Dairy Research* **53** 259–269
- Auldist MJ & Hubble IB 1998 Effects of mastitis on raw milk and dairy products. *Australian Journal Dairy Technology* **53** 28–36
- Auldist MJ, O'Brien G, Cole D, Macmillan KL & Grainger C 2006 Effects of varying lactation length on milk production capacity of cows in pasture-based dairying systems. *Journal of Dairy Science* **90** 3234–3241
- Barbano DM, Rasmussen RR & Lynch JM 1991 Influence of milk somatic cell count and milk age on cheese yield. *Journal of Dairy Science* **74** 369–388
- Barrett FM, Kelly AL, McSweeney PLH & Fox PF 1999 Use of exogenous urokinase to accelerate proteolysis in cheddar cheese during ripening. *International Dairy Journal* **9** 421–427
- Barry JG & Donnelly WJ 1981 Casein compositional studies. II. The effect of secretory disturbance on casein composition in freshly drawn and aged bovine milks. *Journal of Dairy Research* **48** 437–446
- Bastian ED & Brown RJ 1996 Plasmin in milk and dairy products: an update. *International Dairy Journal* **6** 435–457
- Bastian ED, Brown RJ & Ernstorm CA 1991 Plasmin activity and milk coagulation. *Journal of Dairy Science* **74** 3677–3685
- Chevalier F, Rofidal V, Vanova P, Bergoin A & Rossignol M 2004 Proteomic capacity of recent fluorescent dyes for protein staining. *Phytochemistry* **65** 1499–1506
- Coulon JB, Verdier I, Pradel P & Almena M 1998 Effect of lactation stage on the cheese making properties of milk and the quality of Saint-Nectaire-type cheese. *Journal of Dairy Research* **65** 295–305
- Creamer LK & Richardson T 1984 Anomalous behavior of bovine  $\alpha_{s1}$ - and  $\beta$ -caseins on gel electrophoresis in sodium dodecyl sulfate buffers. *Archives of Biochemistry and Biophysics* **234** 476–486
- Decaen C & Adda J 1970 Changes in secretion of fatty acids of milk fat during lactation in cows. *Annales de Biologie Animale, Biochimie, Biophysique* **10** 659–677
- Donnelly WJ & Barry G 1983 Casein compositional studies. III. Changes in Irish milk for manufacturing and role of milk proteinase. *Journal of Dairy Research* **50** 433–441
- Driessen FM & van der Waals CB 1978 Inactivation of native milk proteinase by heat treatment. *Netherlands Milk and Dairy Journal* **32** 245–254
- Fenelon MA & Guinee TP 2000 Primary proteolysis and textural changes during ripening in Cheddar cheeses manufactured to different fat contents. *International Dairy Journal* **10** 151–158
- Fox PF & McSweeney PLH 1996 Proteolysis in cheese during ripening. *Food Reviews International* **12** 457–509
- Hickey DK, Kilcawley KN, Beresford TP, Sheehan EM & Wilkinson MG 2006 The influence of a seasonal milk supply on the biochemical and sensory properties of Cheddar cheese. *International Dairy Journal* **16** 679–690
- Holland JW, Deeth HC & Alewood PF 2004 Proteomic analysis of  $\kappa$ -casein micro-heterogeneity. *Proteomics* **4** 743–752
- IDF 1982 *Cheese and processed cheese-determination of the total solids content*. Brussels: IDF (FIL-IDF Standard no. 4A)
- IDF 1986a *Cheese and processed cheese products-determination of fat content by the gravimetric method (reference method)*. Brussels: IDF (FIL-IDF Standard no. 5B)
- IDF 1986b *Determination of nitrogen content (Kjeldahl method) and calculation of crude protein content*. Brussels: IDF (FIL-IDF Standard no. 20A)
- IDF 1988 *Cheese and processed cheese-determination of chloride content (Potentiometric titration method)*. Brussels: IDF (FIL-IDF Standard no. 88a)
- Kefford B, Christian MP, Sutherland BJ, Mayes JJ & Grainger C 1995 Seasonal influences on Cheddar cheese manufacture: influence of diet quality and stage of lactation. *Journal of Dairy Research* **62** 529–537
- Kelly M, Fox PF & McSweeney PLH 1996 Effect of salt-in-moisture on proteolysis in Cheddar-type cheese. *Milchwissenschaft* **51** 498–501
- Larsen LB, Hinz K, Jørgensen ALW, Møller HS, Wellnitz O, Bruckmaier RM & Kelly AL 2010 Proteomic and peptidomic study of proteolysis in quarter milk after infusion with lipoteichoic acid from *Staphylococcus aureus*. *Journal of Dairy Science* **93** 5613–1626
- Lawrence RC & Gilles J 1980 The assessment of the potential quality of young Cheddar cheese. *New Zealand Journal of Dairy Science and Technology* **15** 1–12
- Lucey J 1996 Cheese making from grass based seasonal milk and problems associated with late lactation milk. *Journal of Society of Dairy Technology* **49** 59–64
- Lucey JA, Fox PF & Kindstedt PS 1991 Rennet coagulation properties of late lactation milk. *Journal of Dairy Science* **74** 173–184
- Lucey JA & Fox PF 1992 Rennet coagulation properties of late lactation milk: effect of pH adjustment, addition of  $\text{CaCl}_2$ , variation in rennet level and blending with mid-lactation milk. *Irish Journal of Agricultural and Food Research* **31** 173–184
- Lucey JA, Kindstedt PS & Fox PF 1992 Seasonality: its impact on the production of good quality mozzarella cheese. *3rd Cheese Symposium, Moorepark 41–48*, Teagasc, Dublin, Ireland
- O'Keefe AM 1984 Seasonal and lactational influences on moisture content of Cheddar cheese. *Irish Journal of Food Science and Technology* **8** 27–37
- Ollikainen P & Nyberg K 1988 A study of plasmin activity during ripening of Swiss-type cheese. *Milchwissenschaft* **43** 497
- Ostensen S, Foldager J & Hermansen JE 1997 Effect of stage of lactation, milk protein genotype and body condition at calving on protein composition and renneting properties of bovine milk. *Journal of Dairy Research* **64** 207–219
- Richardson BC & Pearce KN 1981 The determination of plasmin in dairy products. *New Zealand Journal of Dairy Science and Technology* **16** 209–220
- Rynne NM, Beresford TP, Kelly AL & Guinee TP 2004 Effect of milk pasteurization temperature and *in situ* whey protein denaturation on the composition, texture and heat-induced functionality of half-fat Cheddar cheese. *International Dairy Journal* **14** 989–1001
- Rynne NM, Beresford TB, Guinee TB, Sheehan E, Delahunty CM & Kelly AL 2008 Effect of high-pressure treatment of 1 day-old full-fat Cheddar cheese on subsequent quality and ripening. *Innovative Food Science and Emerging Technologies* **9** 429–440
- Saeman AI, Verdi RJ, Galton DM & Barbano DM 1988 Effects of mastitis on proteolytic activity in bovine milk. *Journal of Dairy Science* **71** 505–512
- Sapru A, Barbano DM, Yun JJ, Klei LR, Oltenacu PA & Bandler DK 1997 Cheddar cheese: influence of milking frequency and stage of lactation on composition and yield. *Journal of Dairy Science* **80** 437–446

- Schaar J** 1985 Plasmin activity and protease-peptone content of individual cows. *Journal of Dairy Research* **52** 369–378
- Schutz MM, Hansen LB, Steuernagel GR, Reneau JK & Kuck AL** 1990 Genetic parameters for somatic cells, protein, and fat in milk of Holsteins. *Journal of Dairy Science* **73** 494–502
- Shevchenko A, Wilm M, Vorm O & Mann M** 1996 Mass spectrometric sequencing of proteins from silver-stained polyacrylamide gels. *Analytical Chemistry* **68** 850–858
- Sousa MJ, Ardo Y & McSweeney PLH** 2001 Advances in the study of proteolysis during cheese ripening. *International Dairy Journal* **11** 327–345
- Ur-Rheman S, McSweeney PLH & Fox PF** 1998 Protocol for the manufacture of miniature cheeses. *Lait* **78** 607–620
- White JCD & Davies DT** 1958b The relation between the chemical and composition of milk and the stability of the caseinate complex. 3. Coagulation by rennet. *Journal of Dairy Research* **25** 267–280