

**UCC Library and UCC researchers have made this item openly available.
Please [let us know](#) how this has helped you. Thanks!**

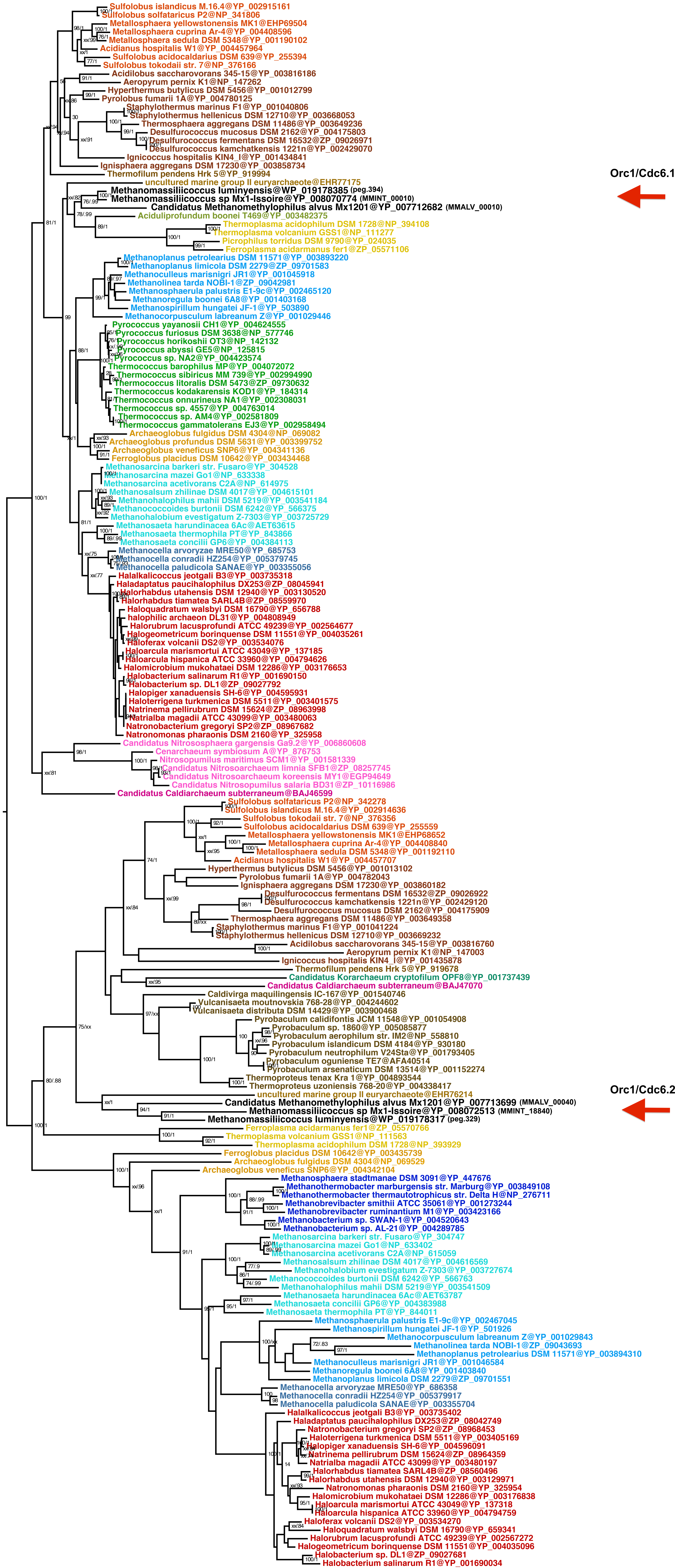
Title	Comparative genomics highlights the unique biology of Methanomassiliicoccales, a Thermoplasmatales-related seventh order of methanogenic archaea that encodes pyrrolysine
Author(s)	Borrel, Guillaume; Parisot, Nicolas; Harris, Hugh Michael B.; Peyretailade, Eric; Gaci, Nadia; Tottey, William; Bardot, Olivier; Raymann, Kasie; Gribaldo, Simonetta; Peyret, Pierre; O'Toole, Paul W.; Brugère, Jean-François
Publication date	2014-08-13
Original citation	BORREL, G., PARISOT, N., HARRIS, H. M., PEYRETAILLADE, E., GACI, N., TOTTEY, W., BARDOT, O., RAYMANN, K., GRIBALDO, S., PEYRET, P., O'TOOLE, P. W. & BRUGÈRE, J.-F. 2014. Comparative genomics highlights the unique biology of Methanomassiliicoccales, a Thermoplasmatales-related seventh order of methanogenic archaea that encodes pyrrolysine. BMC Genomics, 15:679, 1-24. http://dx.doi.org/10.1186/1471-2164-15-679
Type of publication	Article (peer-reviewed)
Link to publisher's version	http://dx.doi.org/10.1186/1471-2164-15-679 Access to the full text of the published version may require a subscription.
Rights	© 2014 Borrel et al.; licensee BioMed Central Ltd., 2014. This is an Open Access article distributed under the terms of the Creative Commons Attribution License (http://creativecommons.org/licenses/by/2.0), which permits unrestricted use, distribution, and reproduction in any medium, provided the original work is properly credited. The Creative Commons Public Domain Dedication waiver (http://creativecommons.org/publicdomain/zero/1.0/) applies to the data made available in this article, unless otherwise stated. http://creativecommons.org/licenses/by/2.0/
Item downloaded from	http://hdl.handle.net/10468/2211



Downloaded on 2022-12-01T13:06:55Z

UCC

University College Cork, Ireland
Coláiste na hOllscoile Corcaigh



Sulfolobus islandicus M.16.4@YP_002915161
 Sulfolobus solfataricus P2@NP_341806
 Metallosphaera yellowstonensis MK1@EHP69504
 Metallosphaera cuprina Ar-4@YP_004408596
 Metallosphaera sedula DSM 5348@YP_001190102
 Acidianus hospitalis W1@YP_004457964
 Sulfolobus acidocaldarius DSM 639@YP_255394
 Sulfolobus tokodaii str. 7@NP_376166
 Acidilobus saccharovorans 345-15@YP_003816186
 Aeropyrum pernix K1@NP_147262
 Hyperthermus butylicus DSM 5456@YP_001012799
 Pyrolobus fumarii 1A@YP_004780125
 Staphylothermus marinus F1@YP_001040806
 Staphylothermus hellenicus DSM 12710@YP_003668053
 Thermosphaera aggregans DSM 11486@YP_003649236
 Desulfurococcus mucosus DSM 2162@YP_004175803
 Desulfurococcus fermentans DSM 16532@ZP_09026971
 Desulfurococcus kamchatkensis 1221n@YP_002429070
 Ignicoccus hospitalis KIN4_I@YP_001434841
 Ignisphaera aggregans DSM 17230@YP_003858734
 Thermofilum pendens Hrk 5@YP_919994

uncultured marine group II euryarchaeote@EHR77175
 Methanomassiliicoccus luminis@WP_019178385 (peg.394)
 Methanomassiliicoccus sp Mx1-Issore@YP_008070774 (MMINT_00010)
 Candidatus Methanomethylophilus alvus Mx1201@YP_007712682 (MMALV_00010)
 Aciduliprofundum boonei T469@YP_003482375
 Thermoplasma acidophilum DSM 1728@NP_394108
 Thermoplasma volcanium GSS1@NP_111277
 Picropilus torridus DSM 9790@YP_024035
 Ferroplasma acidarmanus fer1@ZP_05571106

Methanoplanus petrolearius DSM 11571@YP_003893220
 Methanoplanus limicola DSM 2279@ZP_09701583
 Methanoculleus marisnigri JR1@YP_001045918
 Methanolinea tarda NOBI-1@ZP_09042981
 Methanosphaerula palustris E1-9c@YP_002465120
 Methanoregula boonei 6A8@YP_001403168
 Methanospirillum hungatei JF-1@YP_503890
 Methanocorpusculum labreanum Z@YP_001029446
 Pyrococcus yanosii CH1@YP_004624555
 Pyrococcus furiosus DSM 3638@NP_577746
 Pyrococcus horikoshii OT3@NP_142132
 Pyrococcus abyssi GE5@NP_125815
 Pyrococcus sp. NA2@YP_004423574
 Thermococcus barophilus MP@YP_004072072
 Thermococcus sibiricus MM 739@YP_002994990
 Thermococcus litoralis DSM 5473@ZP_09730632
 Thermococcus kodakarensis KOD1@YP_184314
 Thermococcus onnurineus NA1@YP_002308031
 Thermococcus sp. 4557@YP_004763014
 Thermococcus sp. AM4@YP_002581809
 Thermococcus gammatolerans EJ3@YP_002958494

Archaeoglobus fulgidus DSM 4304@NP_069082
 Archaeoglobus profundus DSM 5631@YP_003399752
 Archaeoglobus veneficus SNP6@YP_004341136
 Ferroglobus placidus DSM 10642@YP_003434468
 Methanosarcina barkeri str. Fusaro@YP_304528
 Methanosarcina mazei Go1@NP_633338
 Methanosarcina acetivorans C2A@NP_614975
 Methanosalsum zhilinae DSM 4017@YP_004615101
 Methanohalophilus mahii DSM 5219@YP_003541184
 Methanococcoides burtonii DSM 6242@YP_566375
 Methanohalobium evestigatum Z-7303@YP_003725729
 Methanosaeta harundinacea 6Ac@AET63615
 Methanosaeta thermophila PT@YP_843866
 Methanosaeta concilii GP6@YP_004384113
 Methanocella arvoryzae MRE50@YP_685753
 Methanocella conradii HZ254@YP_005379745
 Methanocella paludicola SANAE@YP_003355056

Halalkalicoccus jeotgali B3@YP_003735318
 Haladaptatus paucihalophilus DX253@ZP_08045941
 Halorhabdus utahensis DSM 12940@YP_003130520
 Halorhabdus tiamatea SARL4B@ZP_08559970
 Haloquadratum walsbyi DSM 16790@YP_656788
 halophilic archaeon DL31@YP_004808949
 Halorubrum lacusprofundi ATCC 49239@YP_002564677
 Halogeometricum borinquense DSM 11551@YP_004035261
 Haloferax volcanii DS2@YP_003534076
 Haloarcula marismortui ATCC 43049@YP_137185
 Haloarcula hispanica ATCC 33960@YP_004794626
 Halomicrobium mukohataei DSM 12286@YP_003176653
 Halobacterium salinarum R1@YP_001690150
 Halobacterium sp. DL1@ZP_09027792
 Halopiger xanaduensis SH-6@YP_004595931
 Haloterrigena turkmenica DSM 5511@YP_003401575
 Natrinema pellirubrum DSM 15624@ZP_08963998
 Natrialba magadii ATCC 43099@YP_003480063
 Natronobacterium gregoryi SP2@ZP_08967682
 Natronomonas pharaonis DSM 2160@YP_325958

Candidatus Nitrososphaera gargensis Ga9.2@YP_006860608
 Cenarchaeum symbiosum A@YP_876753
 Nitrosopumilus maritimus SCM1@YP_001581339
 Candidatus Nitrosoarchaeum limnia SFB1@ZP_08257745
 Candidatus Nitrosoarchaeum koreensis MY1@EGP94649
 Candidatus Nitrosopumilus salaria BD31@ZP_10116986
 Candidatus Caldichaeum subterraneum@BAJ46599

Sulfolobus solfataricus P2@NP_342278
 Sulfolobus islandicus M.16.4@YP_002914636
 Sulfolobus tokodaii str. 7@NP_376356
 Sulfolobus acidocaldarius DSM 639@YP_255559
 Metallosphaera yellowstonensis MK1@EHP68652
 Metallosphaera cuprina Ar-4@YP_004408840
 Metallosphaera sedula DSM 5348@YP_001192110
 Acidianus hospitalis W1@YP_004457707
 Hyperthermus butylicus DSM 5456@YP_001013102
 Pyrolobus fumarii 1A@YP_004782043
 Ignisphaera aggregans DSM 17230@YP_003860182
 Desulfurococcus fermentans DSM 16532@ZP_09026922
 Desulfurococcus kamchatkensis 1221n@YP_002429120
 Desulfurococcus mucosus DSM 2162@YP_004175909
 Thermosphaera aggregans DSM 11486@YP_003649358
 Staphylothermus marinus F1@YP_001041224
 Staphylothermus hellenicus DSM 12710@YP_003669232
 Acidilobus saccharovorans 345-15@YP_003816760
 Aeropyrum pernix K1@NP_147003
 Ignicoccus hospitalis KIN4_I@YP_001435878
 Thermofilum pendens Hrk 5@YP_919678
 Candidatus Korarchaeum cryptofilum OPF8@YP_001737439
 Candidatus Caldichaeum subterraneum@BAJ47070

Caldivirga maquilingensis IC-167@YP_001540746
 Vulcanisaeta moutnovskia 768-28@YP_004244602
 Vulcanisaeta distributa DSM 14429@YP_003900468
 Pyrobaculum calidifontis JCM 11548@YP_001054908
 Pyrobaculum sp. 1860@YP_005085877
 Pyrobaculum aerophilum str. IM2@NP_558810
 Pyrobaculum islandicum DSM 4184@YP_930180
 Pyrobaculum neutrophilum V24Sta@YP_001793405
 Pyrobaculum oguniense TE7@AFA40514
 Pyrobaculum arsenaticum DSM 13514@YP_001152274
 Thermoproteus tenax Kra 1@YP_004893544
 Thermoproteus uzoniensis 768-20@YP_004338417
 uncultured marine group II euryarchaeote@EHR76214

Candidatus Methanomethylophilus alvus Mx1201@YP_007713699 (MMALV_00040)
 Methanomassiliicoccus sp Mx1-Issore@YP_008072513 (MMINT_18840)
 Methanomassiliicoccus luminis@WP_019178317 (peg.329)
 Ferroplasma acidarmanus fer1@ZP_05570766
 Thermoplasma volcanium GSS1@NP_111563
 Thermoplasma acidophilum DSM 1728@NP_393929
 Ferroglobus placidus DSM 10642@YP_003435739
 Archaeoglobus fulgidus DSM 4304@NP_069529
 Archaeoglobus veneficus SNP6@YP_004342104
 Methanosphaera stadtmanae DSM 3091@YP_447676
 Methanothermobacter marburgensis str. Marburg@YP_003849108
 Methanothermobacter thermoautotrophicus str. Delta H@NP_276711
 Methanobrevibacter smithii ATCC 35061@YP_001273244
 Methanobrevibacter ruminantium M1@YP_003423166
 Methanobacterium sp. SWAN-1@YP_004520643
 Methanobacterium sp. AL-21@YP_004289785
 Methanosarcina barkeri str. Fusaro@YP_304747
 Methanosarcina mazei Go1@NP_633402
 Methanosarcina acetivorans C2A@NP_615059
 Methanosalsum zhilinae DSM 4017@YP_004616569
 Methanohalobium evestigatum Z-7303@YP_003727674
 Methanococcoides burtonii DSM 6242@YP_566763
 Methanohalophilus mahii DSM 5219@YP_003541509
 Methanosaeta harundinacea 6Ac@AET63787
 Methanosaeta concilii GP6@YP_004383988
 Methanosaeta thermophila PT@YP_844011

Methanosphaerula palustris E1-9c@YP_002467045
 Methanospirillum hungatei JF-1@YP_501926
 Methanocorpusculum labreanum Z@YP_001029843
 Methanolinea tarda NOBI-1@ZP_09043693
 Methanoplanus petrolearius DSM 11571@YP_003894310
 Methanoculleus marisnigri JR1@YP_001046584
 Methanoregula boonei 6A8@YP_001403840
 Methanoplanus limicola DSM 2279@ZP_09701551
 Methanocella arvoryzae MRE50@YP_686358
 Methanocella conradii HZ254@YP_005379917
 Methanocella paludicola SANAE@YP_003355704
 Halalkalicoccus jeotgali B3@YP_003735402
 Haladaptatus paucihalophilus DX253@ZP_08042749
 Natronobacterium gregoryi SP2@ZP_08968453
 Haloterrigena turkmenica DSM 5511@YP_003405169
 Halopiger xanaduensis SH-6@YP_004596091
 Natrinema pellirubrum DSM 15624@ZP_08964359
 Natrialba magadii ATCC 43099@YP_003480197
 Halorhabdus tiamatea SARL4B@ZP_08560496
 Halorhabdus utahensis DSM 12940@YP_003129971
 Natronomonas pharaonis DSM 2160@YP_325954
 Halomicrobium mukohataei DSM 12286@YP_003176838
 Haloarcula marismortui ATCC 43049@YP_137318
 Haloarcula hispanica ATCC 33960@YP_004794759
 Haloferax volcanii DS2@YP_003534270
 Haloquadratum walsbyi DSM 16790@YP_659341
 Halorubrum lacusprofundi ATCC 49239@YP_002567272
 Halogeometricum borinquense DSM 11551@YP_004035096
 Halobacterium sp. DL1@ZP_09027681
 Halobacterium salinarum R1@YP_001690034