

**UCC Library and UCC researchers have made this item openly available.
Please [let us know](#) how this has helped you. Thanks!**

Title	Esophageal intramural pseudodiverticulosis characterized by barium esophagography: a case report
Author(s)	O'Connor, Owen J.; Brady, Adrian; Shanahan, Fergus; Quigley, Eamonn M.; O'Riordain, Micheal G.; Maher, Michael M.
Publication date	2010-05-21
Original citation	O'Connor, O. J., Brady, A., Shanahan, F., Quigley, E., O'Riordain M., and Maher, M. M. (2010) 'Esophageal intramural pseudodiverticulosis characterized by barium esophagography: a case report', Journal of Medical Case Reports, 4: 145. http://dx.doi.org/10.1186/1752-1947-4-145
Type of publication	Article (peer-reviewed)
Link to publisher's version	http://dx.doi.org/10.1186/1752-1947-4-145 Access to the full text of the published version may require a subscription.
Rights	© 2010 O'Connor et al; licensee BioMed Central Ltd. This is an Open Access article distributed under the terms of the Creative Commons Attribution License (http://creativecommons.org/licenses/by/2.0), which permits unrestricted use, distribution, and reproduction in any medium, provided the original work is properly cited. http://creativecommons.org/licenses/by/2.0
Item downloaded from	http://hdl.handle.net/10468/2865

Downloaded on 2021-06-14T12:21:30Z

CASE REPORT

Open Access

Esophageal intramural pseudodiverticulosis characterized by barium esophagography: a case report

Owen J O'Connor*¹, Adrian Brady¹, Fergus Shanahan², Eamonn Quigley², Michael O'Riordain³ and Michael M Maher¹

Abstract

Introduction: Esophageal intramural pseudodiverticulosis is a rare condition characterized by the dilatation of the submucosal glands.

Case presentation: We present a case of esophageal intramural pseudodiverticulosis in a 72-year-old Caucasian man who presented with dysphagia and with a background history of alcohol abuse. An upper gastrointestinal endoscopy of our patient showed an esophageal stricture with abnormal mucosal appearances, but no malignant cells were seen at biopsy. Appearances on a barium esophagram were pathognomonic for esophageal intramural pseudodiverticulosis.

Conclusion: We demonstrate the enduring usefulness of barium esophagography in the characterization of abnormal mucosal appearances at endoscopy.

Introduction

Esophageal intramural pseudodiverticulosis is a rare condition characterized by the dilatation of submucosal glands. Based on approximately 250 cases reported to date, this condition is slightly more common in men than in women [1,2]. Intramural pseudodiverticulosis is most commonly associated with gastroesophageal reflux and esophagitis and less commonly with alcoholism, diabetes mellitus, Crohn's disease, tuberculosis, Mallory-Weiss syndrome and achalasia [3,4]. The average age at presentation is 54 years and patients typically present with dysphagia, which is frequently associated with stricture formation, as in case we describe here [3,4]. Symptoms usually respond well to anti-inflammatory medication and balloon dilatation of strictures.

Case presentation

A 72-year-old Caucasian man (height: 170 cm, weight: 85 kg) presented with a 4-year history of mild dysphagia for solid foods. His medical history was notable for alcohol abuse and associated alcoholic hepatitis. An upper gastrointestinal endoscopy was initially performed on our

patient. At endoscopy, a stricture of the mid-esophagus with numerous tiny erythematous macules on the mucosal surface was seen (Figure 1). There was clinical uncertainty about the cause of the stricture and the mucosal appearances. A barium esophagogram was performed (Figures 2A and 2B). Barium esophagogram demonstrated a smooth stricture of the mid-esophagus with numerous small (2 mm to 4 mm), flask-shaped outpouchings of the esophageal wall, an appearance which is pathognomonic for esophageal intramural pseudodiverticulosis [5].

Discussion

Biphasic esophagography is generally recommended for the evaluation of an esophageal stricture. While a single contrast barium esophagogram provides maximal esophageal dilatation and is useful for the depiction of a stricture, a double contrast examination allows accurate imaging of the esophageal mucosa and wall. Barium esophagogram is valuable for establishing this particular diagnosis as reports in the literature have suggested that the diverticular orifices are detected at endoscopy in only 20% of patients [2].

* Correspondence: owen.oconnor7@gmail.com

¹ Department of Radiology, Mercy University Hospital, Cork, Ireland
Full list of author information is available at the end of the article

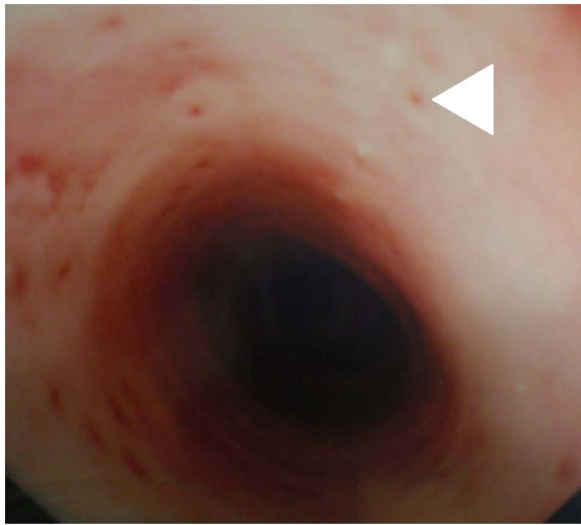


Figure 1 Endoscopic image of the esophagus. The pseudodiverticular orifices appear as multiple erythematous macules on the surface of the esophagus.

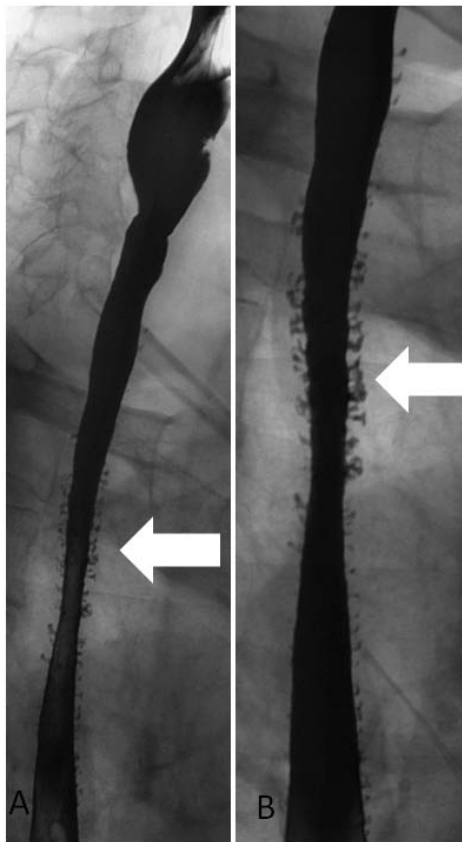


Figure 2 Barium oesophagram. (A) There are numerous barium-filled diverticula of the mid- and lower esophagus. (B) There is lack of distension of the mid-esophagus, thus indicating the presence of a stricture.

Conclusion

This case demonstrates the enduring usefulness of barium esophagography in the characterization of peculiar mucosal appearances at endoscopy.

Consent

Written informed consent was obtained from our patient for publication of this case report and any accompanying images. A copy of the written consent is available for review by the Editor-in-Chief of this journal.

Competing interests

The authors declare that they have no competing interests.

Authors' contributions

OJOC prepared the manuscript. MOR performed upper gastrointestinal endoscopy. AB and MM performed barium esophagography. FS and EQ medically managed our patient. All authors read and approved the final manuscript.

Author Details

¹Department of Radiology, Mercy University Hospital, Cork, Ireland,
²Department of Medicine, University College Cork, Cork, Ireland and
³Department of Surgery, Mercy University Hospital, Cork, Ireland

Received: 3 December 2009 Accepted: 21 May 2010

Published: 21 May 2010

References

1. VanLaer W, Urbain D, Reynaert H: **Esophageal intramural pseudodiverticulosis.** *Clin Gastroenterol Hepatol* 2007, **5**(12):A22.
2. Herter B, Dittler HJ, Wuttge-Hannig A, Siewert JR: **Intramural pseudodiverticulosis of the esophagus: a case series.** *Endoscopy* 1997, **29**:109-113.
3. Flora KD, Gordon MD, Lieberman D, Schmidt W: **Esophageal intramural pseudodiverticulosis.** *Dig Dis* 1997, **15**:113-119.
4. Bhattacharya S, Mahmud S, McGlinchey I, Schmidt W: **Intramural pseudodiverticulosis of esophagus.** *Surg Endosc* 2002, **16**:714-715.
5. Luedtke P, Levine MS, Rubesin SE, Weinstein DS, Laufer I: **Radiologic diagnosis of benign esophageal strictures: a pattern approach.** *Radiographics* 2003, **23**(4):897-909.

doi: 10.1186/1752-1947-4-145

Cite this article as: O'Connor et al., Esophageal intramural pseudodiverticulosis characterized by barium esophagography: a case report *Journal of Medical Case Reports* 2010, **4**:145

Submit your next manuscript to BioMed Central and take full advantage of:

- Convenient online submission
- Thorough peer review
- No space constraints or color figure charges
- Immediate publication on acceptance
- Inclusion in PubMed, CAS, Scopus and Google Scholar
- Research which is freely available for redistribution

Submit your manuscript at
www.biomedcentral.com/submit

