

**UCC Library and UCC researchers have made this item openly available.
Please [let us know](#) how this has helped you. Thanks!**

Title	Biocidal inactivation of Lactococcus lactis bacteriophages: efficacy and targets of commonly used sanitizers
Author(s)	Hayes, Stephen; Murphy, James; Mahony, Jennifer; Lugli, Gabriele A.; Ventura, Marco; Noben, Jean-Paul; Franz, Charles M. A. P.; Neve, Horst; Nauta, Arjen; van Sinderen, Douwe
Publication date	2017-02-02
Original citation	Hayes, S., Murphy, J., Mahony, J., Lugli, G. A., Ventura, M., Noben, J.-P., Franz, C. M. A. P., Neve, H., Nauta, A. and van Sinderen, D. (2017) 'Biocidal inactivation of Lactococcus lactis bacteriophages: efficacy and targets of commonly used sanitizers', <i>Frontiers in Microbiology</i> , 8, 107 ((14 pp). doi: 10.3389/fmicb.2017.00107
Type of publication	Article (peer-reviewed)
Link to publisher's version	http://www.ncbi.nlm.nih.gov/pmc/articles/PMC5288689/ http://dx.doi.org/10.3389/fmicb.2017.00107 Access to the full text of the published version may require a subscription.
Rights	© 2017, the Authors. This is an open-access article distributed under the terms of the Creative Commons Attribution License (CC BY). The use, distribution or reproduction in other forums is permitted, provided the original author(s) or licensor are credited and that the original publication in this journal is cited, in accordance with accepted academic practice. No use, distribution or reproduction is permitted which does not comply with these terms. https://creativecommons.org/licenses/by/4.0/
Item downloaded from	http://hdl.handle.net/10468/3736

Downloaded on 2021-06-21T13:38:10Z

Supplementary Material

**Biocidal inactivation of *Lactococcus lactis* bacteriophages:
efficacy and targets of commonly used sanitizers.**

Stephen Hayes, James Murphy, Jennifer Mahony, Gabriele Andrea Lugli, Marco Ventura, Jean-Paul Noben, Charles M.A.P. Franz, Horst Neve, Arjen Nauta, Douwe van Sinderen*

* **Correspondence:** Corresponding Author: d.vansinderen@ucc.ie

Supplementary Table S1: Phage titers upon exposure to 0.08 % Benzalkonium Chloride.

Phage (Host)	Pre-Exposure	2 min.	10 min.	20 min.	30 min.
G (G)	7.09 ± 0.8	6.63 ± 0.1	6.15 ± 0.06	5.24 ± 0.05	5.19 ± 0.16
A.16 (A)	7.95 ± 0.26	6.28 ± 0.87	4.21 ± 0.44	3.75 ± 0.17	4.07 ± 0.39
19 (A)	7.76 ± 0.15	5.61 ± 0.79	4.32 ± 0.19	3.86 ± 0.48	3.66 ± 0.51
4 (A)	7.73 ± 0.43	5.8 ± 0.37	4.36 ± 0.45	3.62 ± 0.41	3.29 ± 0.85
A1127 (A)	7.49 ± 0.31	6.12 ± 0.32	4.39 ± 0.24	3.94 ± 0.13	3.73 ± 0.41
Lj (A)	6.97 ± 0.52	6.06 ± 0.19	5.14 ± 0.11	4.35 ± 0.14	3.93 ± 0.23
C0139 (C)	7.75 ± 0.21	5.37 ± 0.42	3.89 ± 0.68	3.12 ± 0.31	1.15 ± 1.63
D.18 (D)	7.85 ± 0.14	5.23 ± 0.71	4.16 ± 1.35	3.2 ± 0.56	1.66 ± 1.5
43 (D)	7.58 ± 0.31	5.8 ± 0.28	3.65 ± 0.34	3.1 ± 0.28	2.95 ± 0.49
E.17 (E)	7.35 ± 0.16	5.99 ± 0.4	4.74 ± 0.85	4.19 ± 0.84	3.41 ± 1.05
E1127 (E)	7.73 ± 0.2	5.78 ± 0.36	4.18 ± 0.25	3.75 ± 0.62	3.08 ± 0.42
F0139 (F)	7.55 ± 0.31	5.79 ± 0.23	4.32 ± 0.48	4.06 ± 0.37	3.58 ± 0.42
F.17 (F)	7.3 ± 0.42	4.65 ± 1.17	3.96 ± 0.28	3.43 ± 0.25	2.46 ± 0.28
4.2 (4)	7.35 ± 0.32	5.78 ± 0.25	4.32 ± 0.34	3.72 ± 0.14	3.15 ± 0.42
5.12 (5)	6.6 ± 0.4	5.28 ± 0.11	3.94 ± 0.2	3.38 ± 0.2	3 ± 0.83
91127 (9)	7.62 ± 0.17	6.23 ± 0.35	5.05 ± 0.09	4.32 ± 0.36	3.61 ± 0.47
19.2 (19)	7.31 ± 0.49	5.94 ± 0.1	3.72 ± 0.16	3.35 ± 0.13	1.39 ± 1.96
19.3 (19)	7.38 ± 0.33	5.86 ± 0.1	4.03 ± 0.5	3.53 ± 0.46	3.14 ± 0.31
13.16 (13)	7.73 ± 0.17	5.86 ± 0.19	3.34 ± 0.47	2.94 ± 0.06	2.58 ± 0.57
15 (13)	7.66 ± 0.24	5.27 ± 0.18	3.42 ± 0.86	2.30 ± 0.07	2.4 ± 0.17
L.18 (L)	7.45 ± 0.2	5.65 ± 0.07	4.46 ± 0.14	3.58 ± 0.25	2.76 ± 0.45
114 (11)	7.13 ± 0.13	5.35 ± 0.16	3.75 ± 0.33	2.85 ± 0.43	2.4 ± 0.17
129 (M)	7.4 ± 0.13	5.9 ± 0.24	4.3 ± 0.25	3.69 ± 0.35	3.1 ± 0.3
145 (M)	7.23 ± 0.23	6.42 ± 0.14	5.22 ± 0.19	4.59 ± 0.32	4.05 ± 0.35
109 (M)	7.83 ± 0.1	6.2 ± 0.33	5.12 ± 0.3	4.47 ± 0.15	4.11 ± 0.24
M.5 (M)	7.06 ± 0.12	5.46 ± 0.06	3.61 ± 0.41	2.78 ± 0.48	2.62 ± 0.28
93 (M)	7.21 ± 0.21	5.67 ± 0.44	4.62 ± 0.2	4.16 ± 0.03	3.2 ± 0.6
M.16 (M)	7.26 ± 0.21	5.16 ± 0.35	3.81 ± 0.43	2.9 ± 0.15	nd
M1127 (M)	7.37 ± 0.13	5.45 ± 0.11	4.27 ± 0.1	3.38 ± 0.68	nd
155 (M)	7.63 ± 0.3	5.52 ± 0.1	4.06 ± 0.24	3.47 ± 0.29	nd
L.6 (L)	7.49 ± 0.09	5.21 ± 0.3	3.37 ± 0.38	2.84 ± 0.4	nd
40 (L)	7.09 ± 0.1	4.79 ± 0.28	3.94 ± 0.06	3.54 ± 0.33	nd
i0139 (i)	7.75 ± 0.14	5.69 ± 0.11	3.56 ± 0.38	2.87 ± 0.51	nd
44 (11)	7.5 ± 0.18	4.16 ± 0.55	3.75 ± 0.31	2.84 ± 0.47	nd
10.5 (10)	7.72 ± 0.32	5.25 ± 0.23	3.95 ± 0.15	3.22 ± 0.23	nd
16 (9)	6.66 ± 0.11	3.94 ± 0.2	2.42 ± 0.72	nd	nd

Phage titer is expressed in log form. nd = Not Detectable, indicating no phage survived beyond this point. **Bold** denotes resistant phages. All figures are the result of at least triplicate assays.

Supplementary Table S2: Phage titers after exposure to 14 % Hydrogen Peroxide.

Phage (Host)	Before Exposure	2 min.	10 min.	20 min.	30 min.
A.16 (A)	7.3 ± 0.2	6.9 ± 0.8	6.3 ± 0.23	4.46 ± 0.28	2.78 ± 0.64
19 (A)	7.46 ± 0.32	7.18 ± 0.35	6.02 ± 0.15	4.89 ± 0.76	3.48 ± 0.3
4 (A)	7.45 ± 0.28	6.7 ± 0.51	5.09 ± 0.23	4.16 ± 0.42	3.4 ± 0.45
A1127 (A)	7.42 ± 0.26	6.3 ± 0.36	5.7 ± 0.5	4.5 ± 0.31	3.3 ± 0.23
Lj (A)	7.54 ± 0.34	6.81 ± 0.62	5.61 ± 0.22	4.39 ± 0.31	3.67 ± 0.24
C0139 (C)	7.03 ± 0.13	6.39 ± 0.33	5.15 ± 0.46	3.51 ± 0.31	2.45 ± 0.42
G (G)	6.92 ± 0.41	6.81 ± 0.29	5.45 ± 0.38	4.51 ± 0.62	2.3 ± 0.23
91127 (9)	7.51 ± 0.43	6.63 ± 0.67	6.34 ± 0.69	4.35 ± 0.34	3.54 ± 0.35
16 (9)	7.4 ± 0.47	6.54 ± 0.32	5.97 ± 0.42	3.66 ± 0.68	2.52 ± 0.65
13.16 (13)	7.68 ± 0.48	6.3 ± 0.21	5.85 ± 0.7	4.36 ± 0.28	2.6 ± 0.4
15 (13)	7.28 ± 0.19	6.9 ± 0.68	6.6 ± 0.41	4.04 ± 0.11	2.6 ± 0.42
19.2 (19)	7.64 ± 0.43	6.78 ± 0.6	5.7 ± 0.67	4.64 ± 0.43	3.53 ± 0.34
19.3 (19)	6.82 ± 0.46	5.47 ± 0.29	4.6 ± 0.4	3.81 ± 0.64	2.3 ± 0.22
114 (11)	7.49 ± 0.43	7.49 ± 0.43	6.52 ± 0.85	5.43 ± 0.6	3.43 ± 0.65
129 (M)	7.37 ± 0.45	6.68 ± 0.62	5.54 ± 0.31	4.46 ± 0.39	3.44 ± 0.43
145 (M)	7.55 ± 0.39	6.81 ± 0.42	5.76 ± 0.21	4.51 ± 0.54	2.6 ± 0.37
109 (M)	7.56 ± 0.76	6.69 ± 0.37	5.58 ± 0.36	4.55 ± 0.23	2.6 ± 0.32
M.5 (M)	7.72 ± 0.76	7.13 ± 0.23	6.82 ± 0.63	3.93 ± 0.35	3.41 ± 0.25
93 (M)	7.75 ± 0.56	7 ± 0.17	6.2 ± 0.16	4.22 ± 0.16	2.3 ± 0.2
M1127 (M)	7.68 ± 0.2	6.88 ± 0.23	6.41 ± 0.57	4.57 ± 0.35	2.82 ± 0.83
155 (M)	7.38 ± 0.45	6.66 ± 0.68	6.22 ± 0.56	4.55 ± 0.15	2.16 ± 0.56
M.16 (M)	7.1 ± 0.12	6.37 ± 0.23	4.19 ± 0.15	2.78 ± 0.6	nd
E.17 (E)	7.11 ± 0.43	6.54 ± 0.76	5.64 ± 0.27	3.45 ± 0.32	nd
E1127 (E)	7.48 ± 0.32	6.7 ± 0.54	5.43 ± 0.27	3.2 ± 0.16	nd
F.17 (F)	7.54 ± 0.32	6.69 ± 0.43	5.4 ± 0.51	4.54 ± 0.72	nd
L.18 (L)	7.11 ± 0.28	6.98 ± 0.96	5.8 ± 0.62	3.51 ± 0.32	nd
L.6 (L)	7.71 ± 0.51	5.81 ± 0.64	5.23 ± 0.21	2.6 ± 0.31	nd
40 (L)	7.08 ± 0.34	6.64 ± 0.52	4.8 ± 0.29	3.66 ± 0.17	nd
10.5 (10)	7.13 ± 0.56	6.43 ± 0.45	5.37 ± 0.57	3.52 ± 0.54	nd
44 (11)	7.35 ± 0.4	6.23 ± 0.23	5.99 ± 0.57	3.58 ± 0.25	nd
D.18 (D)	6.91 ± 0.45	5.64 ± 0.31	4.38 ± 0.25	3.62 ± 0.67	nd
43 (D)	6.08 ± 0.09	4.38 ± 0.25	3.69 ± 0.59	nd	nd
F0139 (F)	6.82 ± 0.28	5.25 ± 0.34	3.29 ± 0.42	nd	nd
4.2 (4)	7.21 ± 0.16	6.41 ± 0.26	4.24 ± 0.17	nd	nd
5.12 (5)	7.76 ± 0.57	6.59 ± 0.38	4.37 ± 0.23	nd	nd
i0139 (i)	6.93 ± 0.54	5.55 ± 0.35	3.44 ± 0.45	nd	nd

Phage titer is expressed in log form. nd = Not Detectable, indicating no phage survived beyond this point. **Bold** denotes resistant phages. All figures are the result of at least triplicate assays.

Supplementary Table S3: Phage titers after exposure to 1 % Polyvinylpyrrolidone-Iodine

Phage (Host)	Before Exposure	2 min.	10 min.	20 min.	30 min.
G (G)	7.09 ± 0.13	7.09 ± 0.13	7.09 ± 0.13	7.09 ± 0.13	7.09 ± 0.13
5.12 (5)	7.41 ± 0.28	7.41 ± 0.28	7.41 ± 0.28	7.41 ± 0.28	7.41 ± 0.28
i0139 (i)	6.41 ± 0.21	6.3 ± 0.32	5.95 ± 0.49	5.85 ± 0.18	5.78 ± 0.29
F0139 (F)	7.69 ± 0.11	6.48 ± 0.27	5.42 ± 0.31	5.11 ± 0.29	5.04 ± 0.29
F.17 (F)	7.3 ± 0.23	6.19 ± 0.15	6.74 ± 0.32	6.6 ± 0.45	6.54 ± 0.25
D.18 (D)	6.64 ± 0.14	6.56 ± 0.23	6.54 ± 0.36	6.54 ± 0.24	6.52 ± 0.31
43 (D)	6.95 ± 0.32	6.85 ± 0.43	6.83 ± 0.19	6.81 ± 0.28	6.81 ± 0.21
A1127 (A)	7.33 ± 0.33	4.58 ± 0.34	3.76 ± 0.28	2.6 ± 0.14	2.6 ± 0.19
129 (M)	7.53 ± 0.45	6.34 ± 0.67	4.45 ± 0.28	3.58 ± 0.52	3.45 ± 0.36
19 (A)	7.76 ± 0.56	3.95 ± 0.9	3.7 ± 0.23	3.45 ± 0.32	nd
Lj (A)	7.45 ± 0.27	5.68 ± 0.73	3.78 ± 0.32	2.6 ± 0.35	nd
C0139 (C)	7.51 ± 0.27	4.05 ± 0.67	2.9 ± 0.49	2.3 ± 0.15	nd
L.18 (L)	7.21 ± 0.27	5.91 ± 0.35	3.53 ± 0.74	2.3 ± 0.28	nd
E.17 (E)	7.51 ± 0.28	7.02 ± 0.45	4.79 ± 0.32	2.6 ± 0.23	nd
91127 (9)	7.46 ± 0.37	6.51 ± 0.09	4.65 ± 0.37	2.3 ± 0.37	nd
16 (9)	6.96 ± 0.27	5.97 ± 0.32	4.33 ± 0.34	3 ± 0	nd
19.2 (19)	7.53 ± 0.34	4.28 ± 0.36	2.78 ± 0.46	2.3 ± 0.43	nd
19.3 (19)	7.56 ± 0.38	3.72 ± 0.23	3.51 ± 0.24	2.6 ± 0.74	nd
4 (A)	7.55 ± 0.31	4.69 ± 0.32	3.51 ± 0.42	nd	nd
40 (L)	7.61 ± 0.53	5.58 ± 0.36	2.51 ± 0.36	nd	nd
145 (M)	7.87 ± 0.36	4.79 ± 0.23	3.48 ± 0.67	nd	nd
M.5 (M)	7.8 ± 0.23	5.48 ± 0.25	2.6 ± 0.32	nd	nd
93 (M)	7.56 ± 0.17	4.03 ± 0.45	2.3 ± 0.23	nd	nd
M1127 (M)	7.7 ± 0.43	4.79 ± 0.46	3.48 ± 0.42	nd	nd
4.2 (4)	7.11 ± 0.37	4.31 ± 0.4	3.3 ± 0.34	nd	nd
44 (11)	7.27 ± 0.32	4.11 ± 0.84	3.3 ± 0.57	nd	nd
15 (13)	7.52 ± 0.45	3.3 ± 0.32	2.3 ± 0.25	nd	nd
A.16 (A)	7.13 ± 0.29	3.64 ± 0.12	nd	nd	nd
E1127 (E)	7.43 ± 0.13	3.64 ± 0.12	nd	nd	nd
L.6 (L)	7.71 ± 0.12	3.95 ± 0.37	nd	nd	nd
109 (M)	7.73 ± 0.45	4.15 ± 0.56	nd	nd	nd
155 (M)	7.48 ± 0.05	3.08 ± 0.35	nd	nd	nd
10.5 (10)	7.49 ± 0.26	4.23 ± 0.67	nd	nd	nd
114 (11)	7.26 ± 0.24	4.05 ± 0.53	nd	nd	nd
13.16 (13)	7.71 ± 0.24	4.1 ± 0.49	nd	nd	nd
M.16 (M)	7.47 ± 0.24	nd	nd	nd	nd

Phage titer is expressed in log form. nd = Not Detectable, indicating no phage survived beyond this point. **Bold** denotes resistant phages. All figures are the result of at least triplicate assays.

Supplementary Table S4: Phage titers after exposure to 0.08 % Sanitiser A.

Phage (Host)	Before Exposure	2 min.	10 min.	20 min.	30 min.
E1127 (E)	7.43 ± 0.27	6.94 ± 0.43	6.6 ± 0.42	6.56 ± 0.21	6.45 ± 0.35
G (G)	7.29 ± 0.07	6.65 ± 0.24	6.04 ± 0.21	5.95 ± 0.19	5.21 ± 0.31
5.12 (5)	7.41 ± 0.25	6.39 ± 0.41	5.56 ± 0.43	5.11 ± 0.74	5.01 ± 0.29
43 (D)	6.85 ± 0.17	6.23 ± 0.47	5.27 ± 0.23	4.49 ± 0.32	4.23 ± 0.72
A.16 (A)	7.13 ± 0.08	5.46 ± 0.42	4.26 ± 0.34	3.78 ± 0.51	3.26 ± 0.37
19 (A)	7.77 ± 0.21	6.39 ± 0.29	5.13 ± 0.23	4.44 ± 0.48	4.31 ± 0.29
4 (A)	7.58 ± 0.14	5.63 ± 0.78	4.89 ± 0.32	4.63 ± 0.09	3.46 ± 0.28
A1127 (A)	7.33 ± 0.13	6.31 ± 0.43	5.06 ± 0.79	4.13 ± 0.05	3.76 ± 0.15
Lj (A)	7.37 ± 0.15	5.67 ± 0.23	4.52 ± 0.37	3.99 ± 0.09	3.54 ± 0.39
E.17 (E)	7.51 ± 0.09	5.26 ± 0.23	3.68 ± 0.23	3.15 ± 0.37	2.3 ± 0.32
L.18 (L)	7.21 ± 0.19	4.52 ± 0.27	4.51 ± 0.27	3.62 ± 0.23	2.9 ± 0.36
145 (M)	7.8 ± 0.16	5.54 ± 0.37	4.89 ± 0.32	3.53 ± 0.25	2.6 ± 0.08
93 (M)	7.88 ± 0.19	5.95 ± 0.4	4.64 ± 0.26	4.09 ± 0.37	3.34 ± 0.47
155 (M)	7.61 ± 0.23	5.45 ± 0.32	4.53 ± 0.34	2.97 ± 0.2	2.6 ± 0.21
91127 (9)	7.37 ± 0.11	6.62 ± 0.27	5.32 ± 0.23	4.51 ± 0.67	3.55 ± 0.32
16 (9)	7.24 ± 0.25	6.41 ± 0.32	5.37 ± 0.34	4.89 ± 0.32	3.43 ± 0.38
114 (11)	7.26 ± 0.312	3.87 ± 0.43	3.08 ± 0.08	2.6 ± 0.05	2.6 ± 0.12
44 (11)	7.27 ± 0.31	4.34 ± 0.21	3.3 ± 0.39	2.9 ± 0.49	2.3 ± 0.23
15 (13)	7.52 ± 0.31	4.85 ± 0.47	3.97 ± 0.24	3.34 ± 0.43	2.9 ± 0.08
19.3 (19)	7.56 ± 0.11	5.92 ± 0.27	3.97 ± 0.3	3.72 ± 0.32	2.3 ± 0.47
C0139 (C)	7.65 ± 0.12	4.75 ± 0.27	3.51 ± 0.23	2.6 ± 0.23	nd
D.18 (D)	6.15 ± 0.24	4.66 ± 0.34	3.26 ± 0.25	2.78 ± 0.56	nd
F0139 (F)	7.09 ± 0.19	3.3 ± 0.23	3.08 ± 0.37	2.3 ± 0.26	nd
F.17 (F)	7 ± 0.24	4.52 ± 0.37	2.6 ± 0.4	2.3 ± 0.09	nd
L.6 (L)	7.71 ± 0.22	3.9 ± 0.37	2.78 ± 0.12	2.3 ± 0.7	nd
40 (L)	7.53 ± 0.08	4.64 ± 0.21	3.47 ± 0.3	2.6 ± 0.29	nd
129 (M)	7.74 ± 0.14	5.53 ± 0.21	3.88 ± 0.27	2.64 ± 0.31	nd
109 (M)	7.75 ± 0.24	5.68 ± 0.27	4.53 ± 0.21	3.68 ± 0.72	nd
M.5 (M)	7.8 ± 0.19	5.25 ± 0.24	3.15 ± 0.14	2.6 ± 0.43	nd
M.16 (M)	7.47 ± 0.1	4.78 ± 0.14	4.76 ± 0.32	3.2 ± 0.12	nd
M1127 (M)	7.73 ± 0.23	4.98 ± 0.36	3.59 ± 0.34	3.38 ± 0.6	nd
13.16 (13)	7.71 ± 0.23	5.53 ± 0.54	3.48 ± 0.42	3.26 ± 0.2	nd
19.2 (19)	7.53 ± 0.09	6.07 ± 0.72	3.38 ± 0.34	2.3 ± 0.23	nd
10.5 (10)	7.25 ± 0.32	4.51 ± 0.89	3 ± 0.2	nd	nd
4.2 (4)	7.53 ± 0.2	3.08 ± 0.67	nd	nd	nd
i0139 (i)	6.41 ± 0.34	4.4 ± 0.13	nd	nd	nd

Phage titer is expressed in log form. nd = Not Detectable, indicating no phage survived beyond this point. **Bold** denotes resistant phages. All figures are the result of at least triplicate assays.

Supplementary Table S5: Phage titers after exposure to 0.1 % Sanitiser B.

Phage (Host)	Before Exposure	2 min.	10 min.	20 min.	30 min.
G (G)	7.64 ± 0.34	6.65 ± 0.32	5.75 ± 0.19	5.38 ± 0.17	5.26 ± 0.32
i0139 (i)	7.24 ± 0.16	7.12 ± 0.43	7.05 ± 0.47	6.9 ± 0.54	6.88 ± 0.23
F0139 (F)	6.41 ± 0.3	6.38 ± 0.42	6.34 ± 0.15	6.34 ± 0.37	6.3 ± 0.38
43 (D)	6.2 ± 0.21	6.15 ± 0.29	6.1 ± 0.24	5.95 ± 0.52	5.64 ± 0.46
C0139 (C)	7.33 ± 0.27	4.13 ± 0.34	3.45 ± 0.67	3.72 ± 0.26	3.26 ± 0.53
F.17 (F)	7.15 ± 0.31	4.93 ± 0.71	2.99 ± 0.38	2.6 ± 0.23	2.3 ± 0.42
L.18 (L)	7.18 ± 0.32	3.51 ± 0.32	3.79 ± 0.36	2.9 ± 0.24	2.78 ± 0.38
10.5 (10)	7.49 ± 0.35	6.64 ± 0.54	4.71 ± 0.43	3.76 ± 0.37	2.78 ± 0.32
114 (11)	7.47 ± 0.15	5.64 ± 0.37	4.41 ± 0.73	3.9 ± 0.34	3.85 ± 0.23
44 (11)	7.57 ± 0.45	4.43 ± 0.39	3.96 ± 0.43	2.08 ± 0.05	2.08 ± 0.05
D.18 (D)	7.08 ± 0.2	5.53 ± 0.38	3.86 ± 0.36	2.6 ± 0.43	nd
E1127 (E)	7.38 ± 0.09	4.83 ± 0.12	3.2 ± 0.51	2.6 ± 0.29	nd
109 (M)	7.73 ± 0.29	5.33 ± 0.34	3.72 ± 0.47	2.6 ± 0.34	nd
19.3 (19)	7.68 ± 0.13	4.11 ± 0.42	3.6 ± 0.21	3.34 ± 0.29	nd
A.16 (A)	7.72 ± 0.15	4.62 ± 0.52	2.3 ± 0.12	nd	nd
19 (A)	7.43 ± 0.15	4.62 ± 0.52	2.3 ± 0.12	nd	nd
A1127 (A)	7.47 ± 0.27	2.48 ± 0.3	2.3 ± 0.21	nd	nd
145 (M)	7.53 ± 0.05	5.74 ± 0.75	3.53 ± 0.31	nd	nd
M1127 (M)	7.81 ± 0.23	5.99 ± 0.64	3.63 ± 0.25	nd	nd
91127 (9)	7.6 ± 0.64	4.03 ± 0.43	3.2 ± 0.23	nd	nd
15 (13)	7.24 ± 0.62	3.48 ± 0.43	2.6 ± 0.45	nd	nd
19.2 (19)	7.71 ± 0.37	3.3 ± 0.23	2.78 ± 0.75	nd	nd
4 (A)	7.11 ± 0.43	3.75 ± 0.25	nd	nd	nd
L.6 (L)	7.76 ± 0.34	2.9 ± 0.84	nd	nd	nd
40 (L)	7.06 ± 0.34	2.6 ± 0.23	nd	nd	nd
129 (M)	7.86 ± 0.23	4.63 ± 0.28	nd	nd	nd
M.5 (M)	7.41 ± 0.15	3.54 ± 0.73	nd	nd	nd
M.16 (M)	7.27 ± 0.38	2.3 ± 0.64	nd	nd	nd
4.2 (4)	7.27 ± 0.43	3.15 ± 0.21	nd	nd	nd
16 (9)	7.1 ± 0.54	2.6 ± 0.37	nd	nd	nd
13.16 (13)	7.59 ± 0.43	3.78 ± 0.34	nd	nd	nd
Lj (A)	7.06 ± 0.25	nd	nd	nd	nd
E.17 (E)	7.47 ± 0.2	nd	nd	nd	nd
93 (M)	7.77 ± 0.2	nd	nd	nd	nd
155 (M)	7.59 ± 0.12	nd	nd	nd	nd
5.12 (5)	7.76 ± 0.14	nd	nd	nd	nd

Phage titer is expressed in log form. nd = Not Detectable, indicating no phage survived beyond this point. **Bold** denotes resistant phages. All figures are the result of at least triplicate assays.

Supplementary Table S6: Phage titers after exposure to 0.12 % Sanitiser C.

Phage (Host)	Before Exposure	2 min.	10 min.	20 min.	30 min.
G (G)	7.64 ± 0.09	7.64 ± 0.14	7.63 ± 0.21	7.62 ± 0.32	7.61 ± 0.24
5.12 (S)	7.76 ± 0.24	7.62 ± 0.37	7.6 ± 0.53	6.95 ± 0.21	6.7 ± 0.29
43 (D)	6.68 ± 0.11	6.61 ± 0.31	6.58 ± 0.14	6.54 ± 0.43	6.51 ± 0.23
F0139 (F)	6.41 ± 0.14	6.3 ± 0.34	6.25 ± 0.32	6.08 ± 0.12	5.98 ± 0.38
i0139 (i)	6.48 ± 0.21	6.3 ± 0.32	6 ± 0.14	5.95 ± 0.25	5.9 ± 0.13
19 (A)	7.59 ± 0.24	5.41 ± 0.49	4.81 ± 0.76	3.45 ± 0.32	2.3 ± 0.26
A1127 (A)	7.47 ± 0.43	3.98 ± 0.32	3.38 ± 0.48	2.78 ± 0.32	2.3 ± 0.12
E.17 (E)	7.47 ± 0.32	5.54 ± 0.34	3.2 ± 0.32	3.15 ± 0.47	2.78 ± 0.42
E1127 (E)	7.38 ± 0.23	4.56 ± 0.42	4.26 ± 0.26	3.62 ± 0.31	3.47 ± 0.78
L.18 (L)	7.18 ± 0.19	4.12 ± 0.32	3.48 ± 0.23	3.2 ± 0.72	2.6 ± 0.45
L.6 (L)	7.76 ± 0.13	5.71 ± 0.12	4.33 ± 0.32	4.18 ± 0.43	3.98 ± 0.82
40 (L)	7.06 ± 0.32	3.9 ± 0.43	3.85 ± 0.23	3.41 ± 0.47	2.6 ± 0.37
129 (M)	7.75 ± 0.2	4.62 ± 0.27	3.41 ± 0.32	2.9 ± 0.21	2.3 ± 0.23
145 (M)	7.54 ± 0.09	5.72 ± 0.19	4.75 ± 0.34	4.45 ± 0.1	3.3 ± 0.32
109 (M)	7.64 ± 0.19	4.3 ± 0.41	3.9 ± 0.73	3.46 ± 0.23	2.78 ± 0.32
M.5 (M)	7.7 ± 0.23	4.63 ± 0.47	3.2 ± 0.21	3.15 ± 0.23	2.3 ± 0.32
93 (M)	7.77 ± 0.23	4.88 ± 0.18	4.82 ± 0.23	4.23 ± 0.42	4.11 ± 0.21
M.16 (M)	7.27 ± 0.27	4.21 ± 0.23	4.09 ± 0.49	4.09 ± 0.48	3.26 ± 0.68
M1127 (M)	7.78 ± 0.28	5.6 ± 0.17	4.53 ± 0.28	4.45 ± 0.32	4.3 ± 0.08
155 (M)	7.59 ± 0.3	4.4 ± 0.74	3.94 ± 0.37	3.6 ± 0.23	3.58 ± 0.65
91127 (9)	7.6 ± 0.31	4.85 ± 0.32	4.56 ± 0.73	4.06 ± 0.08	3.48 ± 0.31
16 (9)	7.1 ± 0.21	3.75 ± 0.43	3.3 ± 0.28	3.38 ± 0.45	3.08 ± 0.27
10.5 (10)	7.49 ± 0.16	5.89 ± 0.23	4.57 ± 0.43	2.78 ± 0.34	2.3 ± 0.46
44 (11)	7.57 ± 0.21	3.9 ± 0.32	2.6 ± 0.23	2.6 ± 0.23	2.3 ± 0.13
15 (13)	7.24 ± 0.15	4.49 ± 0.23	4 ± 0.78	3.45 ± 0.2	3.38 ± 0.43
19.2 (19)	7.46 ± 0.2	4.31 ± 0.27	4.3 ± 0.63	4.19 ± 0.43	3.97 ± 0.42
19.3 (19)	6.68 ± 0.13	3.3 ± 0.73	3.3 ± 0.27	3 ± 0.32	2.78 ± 0.32
A.16 (A)	7.63 ± 0.09	5.39 ± 0.43	3.44 ± 0.29	2.37 ± 0.18	nd
4 (A)	7.11 ± 0.28	6 ± 0.26	3 ± 0.35	2.6 ± 0.23	nd
Lj (A)	7.06 ± 0.22	4.5 ± 0.62	3.08 ± 0.12	2.78 ± 0.32	nd
D.18 (D)	7.08 ± 0.3	4.53 ± 0.41	2.45 ± 0.12	2.3 ± 0.23	nd
F.17 (F)	7.28 ± 0.32	4.45 ± 0.32	3.51 ± 0.87	2.9 ± 0.31	nd
114 (11)	7.53 ± 0.24	3.62 ± 0.26	2.9 ± 0.74	nd	nd
C0139 (C)	7.33 ± 0.14	3.87 ± 0.81	nd	nd	nd
4.2 (4)	7.27 ± 0.14	4.25 ± 0.52	nd	nd	nd
13.16 (13)	7.59 ± 0.21	3.34 ± 0.43	nd	nd	nd

Phage titer is expressed in log form. nd = Not Detectable, indicating no phage survived beyond this

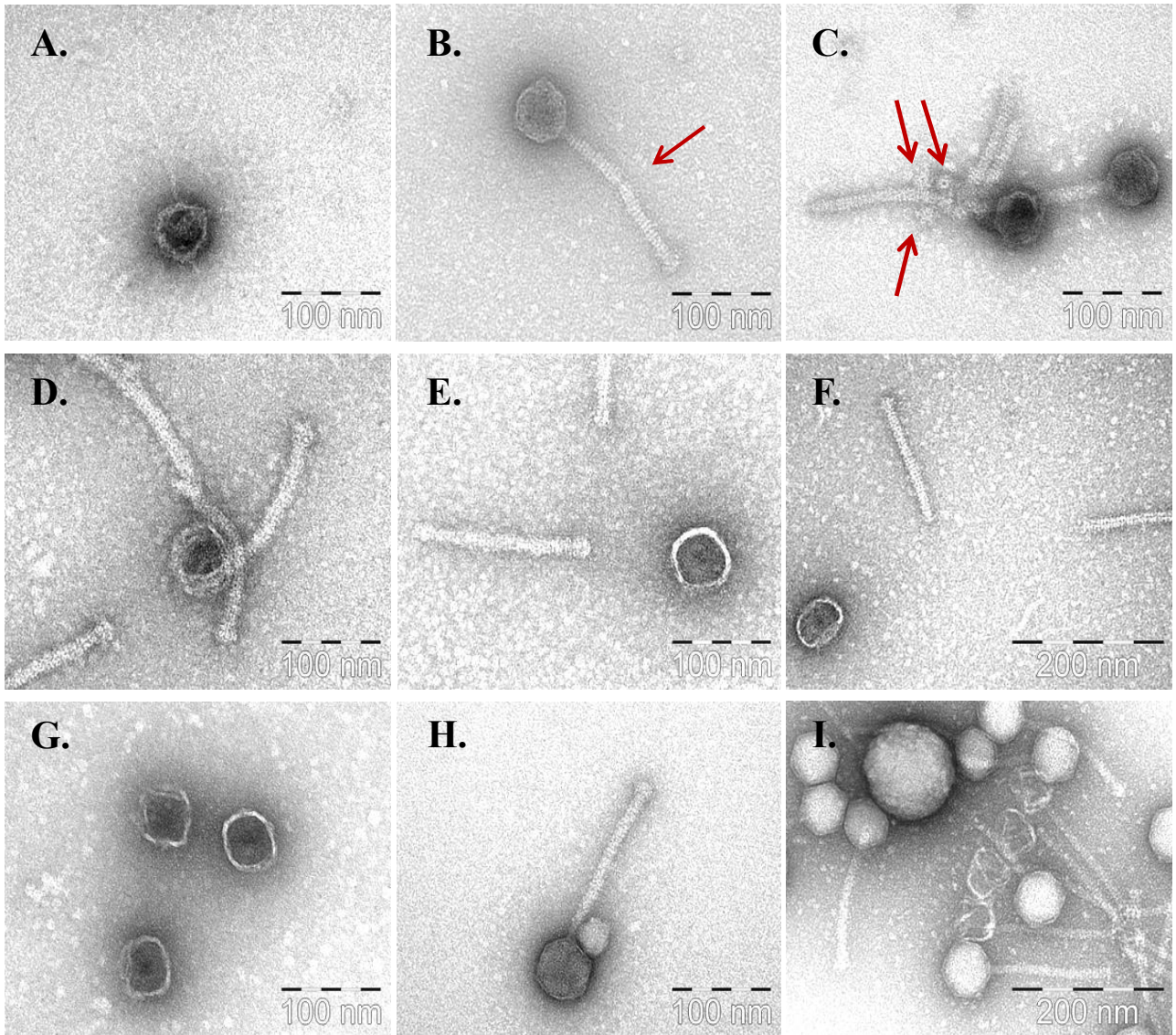
point. **Bold** denotes resistant phages. All figures are the result of at least triplicate assays.

>Phi93_15 Phi93_15 Major tail protein

MKLDYNSREIFFGNEALIVADMAKGSNGKLEFTNHKIVTGLVSVGSMEDQAETNSYPADD
VPDHGVKKGATLLQGEMVFIQTDQALKEDILGQORTANGLGWSTTGDWK**TKCVQYLIKGR**
KRDKVTGEFIDGYRVVVYPKLKPTAEPTKESETDSVDGVDPIQWTLAVQATESDIYLNNG
 KNVATIEYEIWGEQAKDFAKKMESGLFIMQPDTVLAGAVTLVAPVIPNVTTTRGGNDGT
IVVPDTLKDSNGGTVKVTSVIKDANGKVE^TNGHLAPGVHLVTF^SADGYQDVNSGVSVTDH

P

Supplementary Figure S1: Amino acid sequence of the Major Tail Protein (MTP) of phage 93, with peptide reads obtained from mass spec analysis of protein bands obtained after PVP exposure underlined. Single underline denotes those reads obtained from the smallest band of 11 kDa. Double underline denotes those reads obtained from the two larger bands of 23 kDa and 46 kDa. From this, it was possible to narrow the area targeted by PVP to the thirteen amino acid residues highlighted in red.



Supplementary Figure S2: Additional images of the effects of biocide exposure on the structure of phage 93. A: 3 % PVP. B: 1 % PVP with break-point of tail highlighted in red. C: 1 % PVP with possible detached baseplates highlighted in red. D: 0.5 % Sanitiser A. E: 1 % Sanitiser A. F: 0.5 % Sanitiser B. G: 0.1 % Sanitiser B. H: 1 % Sanitiser E. I: 3 % Sanitiser E.

