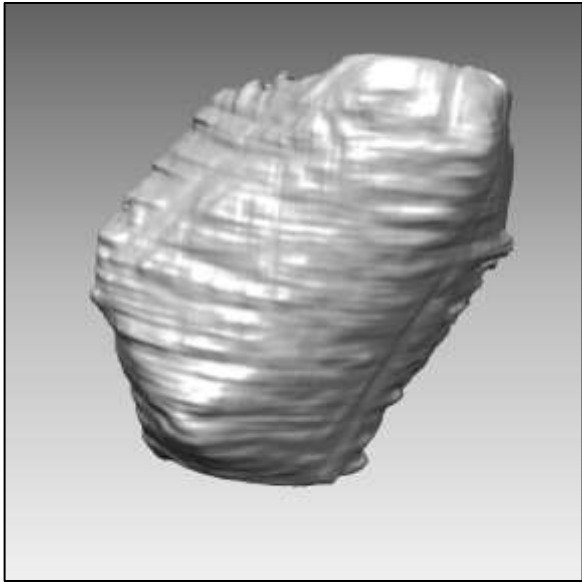


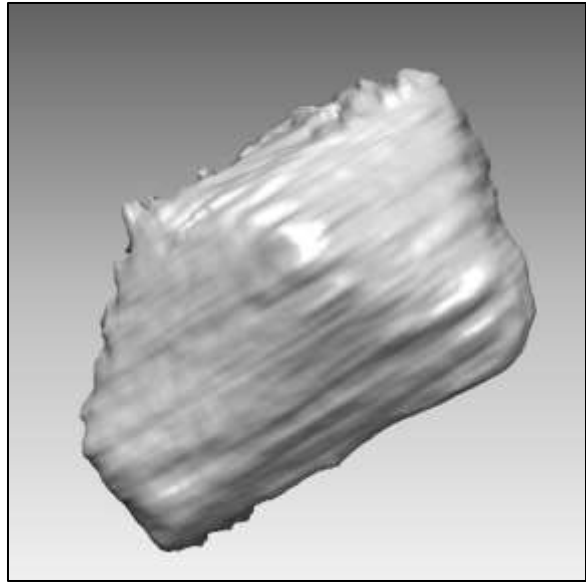
**UCC Library and UCC researchers have made this item openly available.
Please [let us know](#) how this has helped you. Thanks!**

Title	Classification of polyhedral shapes from individual anisotropically resolved cryo-electron tomography reconstructions
Author(s)	Bag, Sukantadev; Prentice, Michael B.; Liang, Mingzhi; Warren, Martin J.; Roy Choudhury, Kingshuk
Publication date	2016-06-13
Original citation	Bag, S., Prentice, M. B., Liang, M., Warren, M. J. and Roy Choudhury, K. (2016) 'Classification of polyhedral shapes from individual anisotropically resolved cryo-electron tomography reconstructions', BMC Bioinformatics, 17, 234 (14pp). doi: 10.1186/s12859-016-1107-5
Type of publication	Article (peer-reviewed)
Link to publisher's version	https://bmcbioinformatics.biomedcentral.com/articles/10.1186/s12859-016-1107-5 http://dx.doi.org/10.1186/s12859-016-1107-5 Access to the full text of the published version may require a subscription.
Rights	© 2016, Bag et al. Open Access This article is distributed under the terms of the Creative Commons Attribution 4.0 International License (http://creativecommons.org/licenses/by/4.0/), which permits unrestricted use, distribution, and reproduction in any medium, provided you give appropriate credit to the original author(s) and the source, provide a link to the Creative Commons license, and indicate if changes were made. The Creative Commons Public Domain Dedication waiver (http://creativecommons.org/publicdomain/zero/1.0/) applies to the data made available in this article, unless otherwise stated. http://creativecommons.org/licenses/by/4.0/
Item downloaded from	http://hdl.handle.net/10468/4127

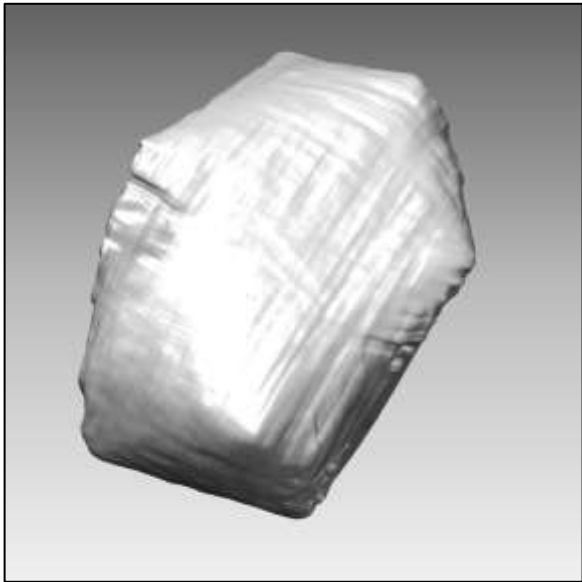
Downloaded on 2023-03-26T14:32:03Z



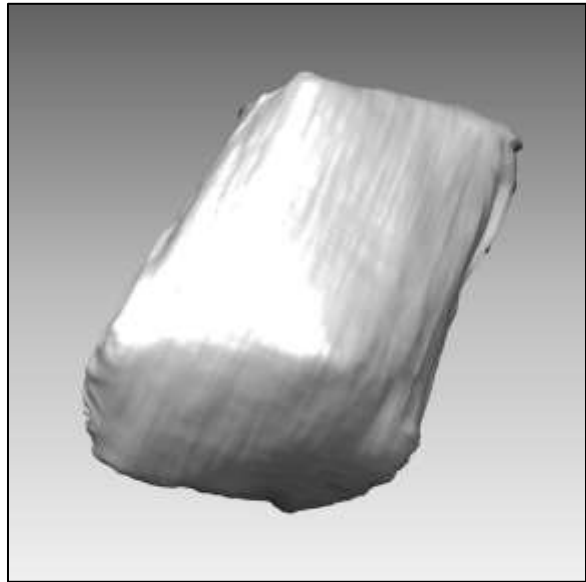
Metabolosome 05_01



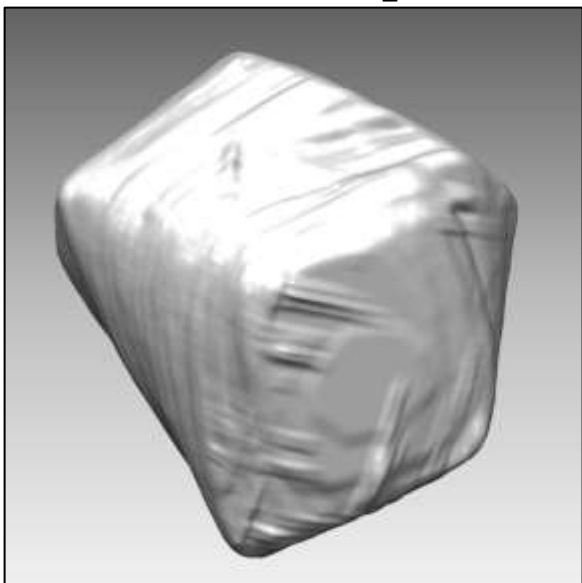
Metabolosome 05_02



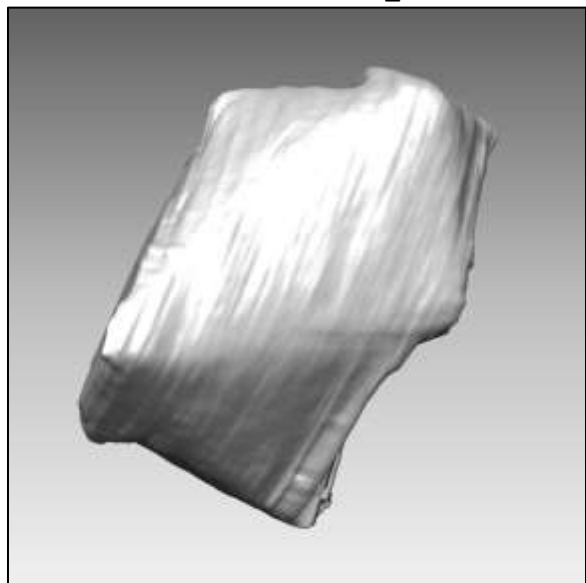
Metabolosome 13_01



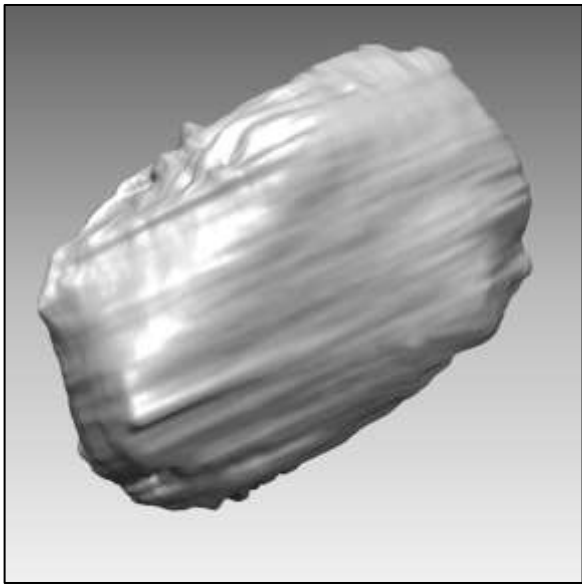
Metabolosome 13_02



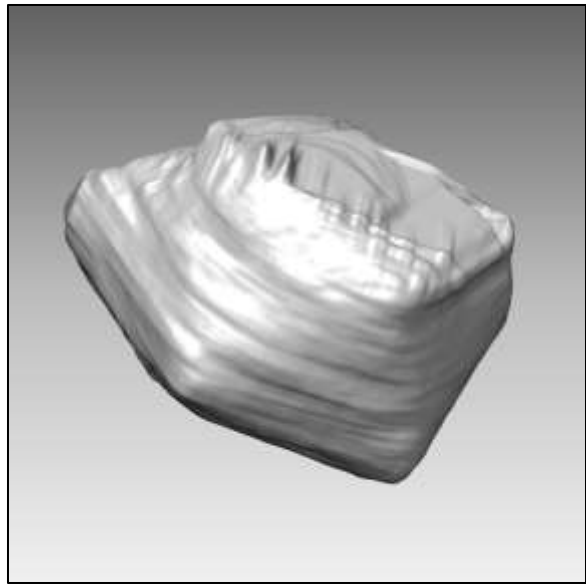
Metabolosome 13_03



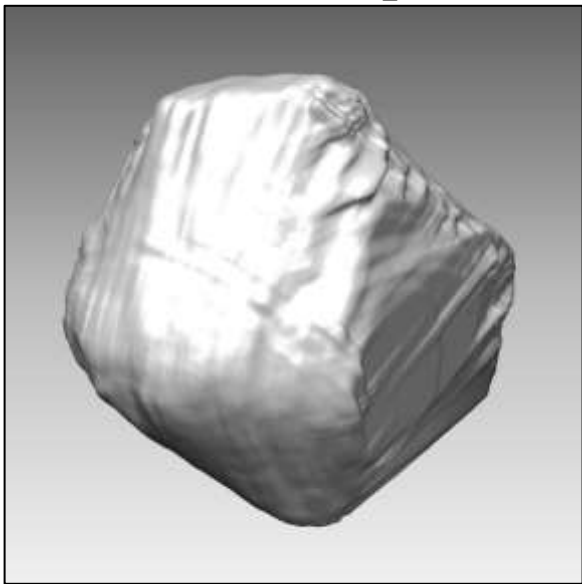
Metabolosome 13_04



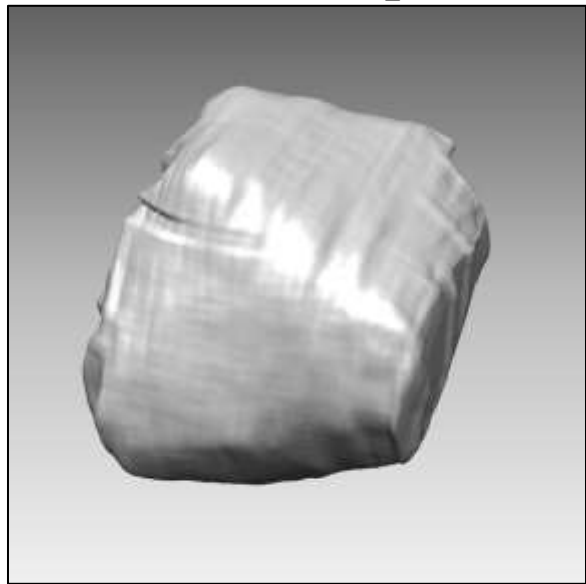
Metabolosome 13_05



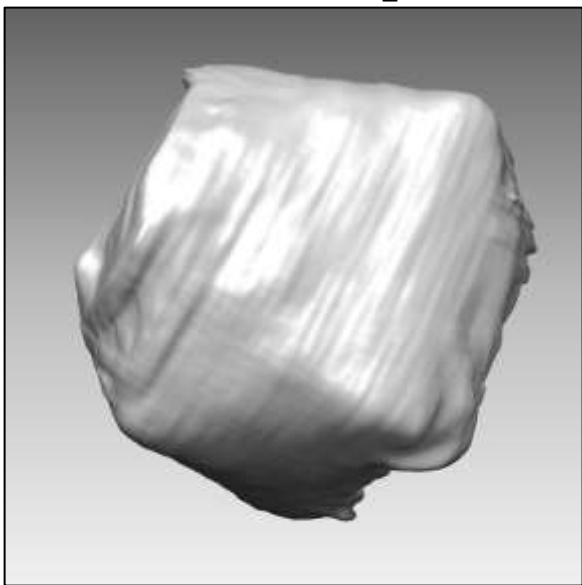
Metabolosome 13_06



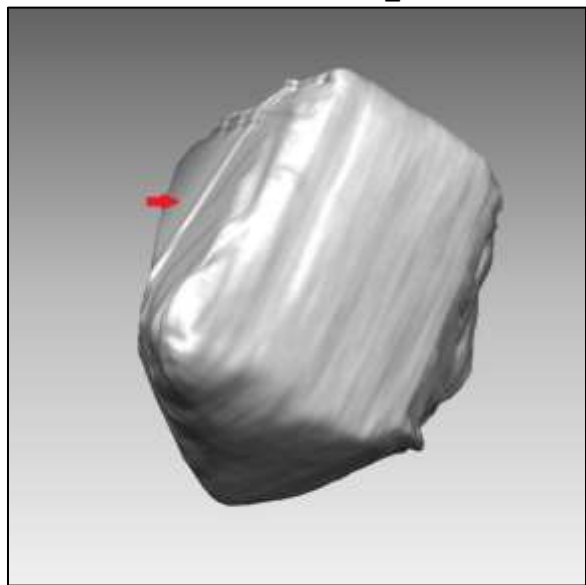
Metabolosome 13_07



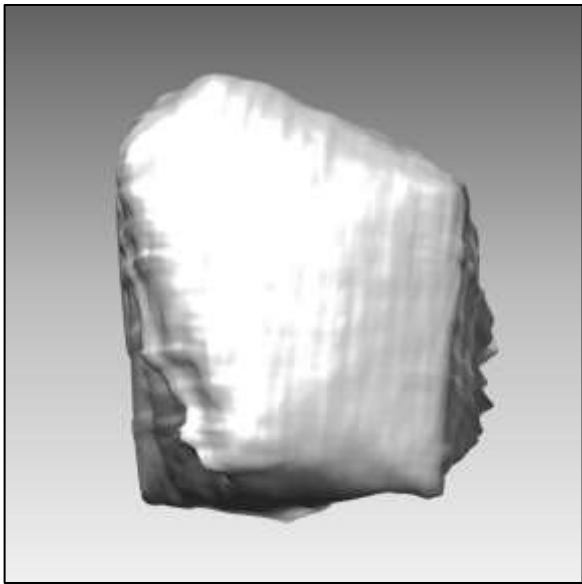
Metabolosome 13_08



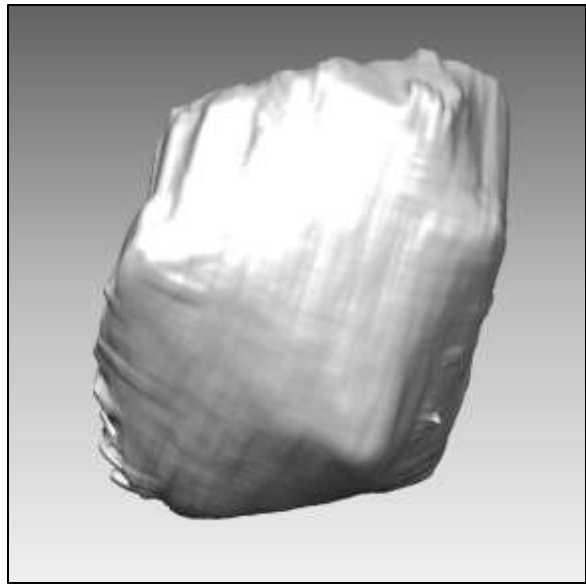
Metabolosome 13_09



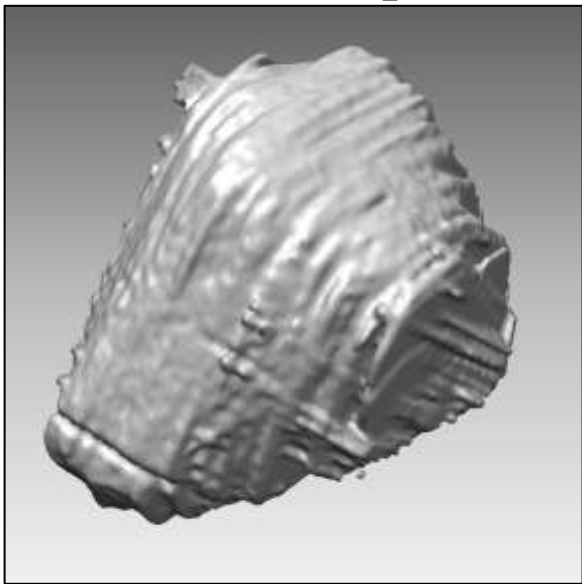
Metabolosome 13_12



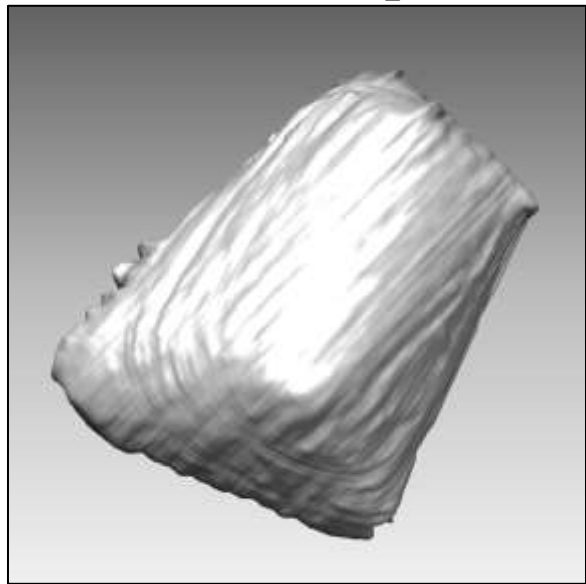
Metabolosome 13_13



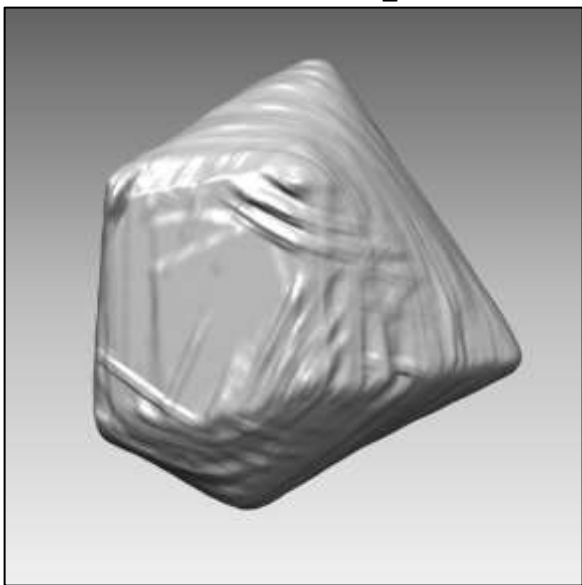
Metabolosome 13_14



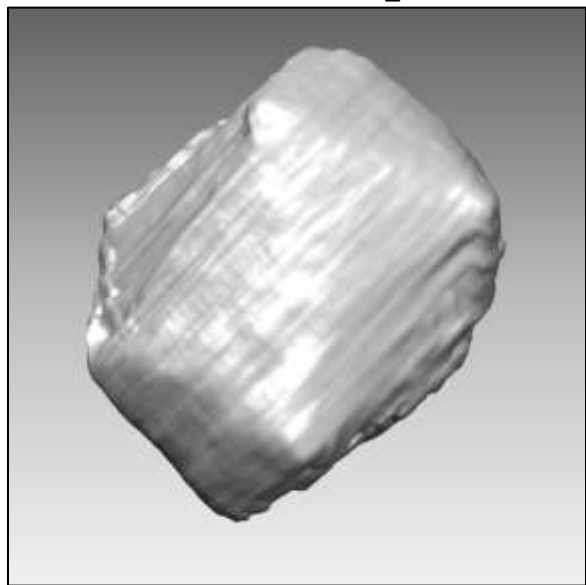
Metabolosome 14_01



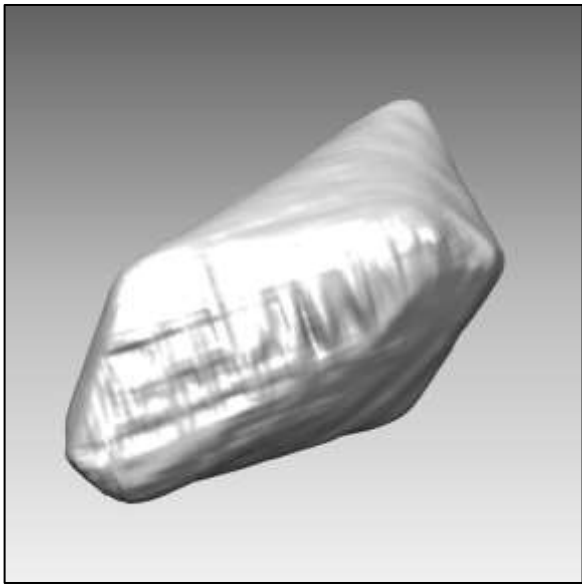
Metabolosome 14_02



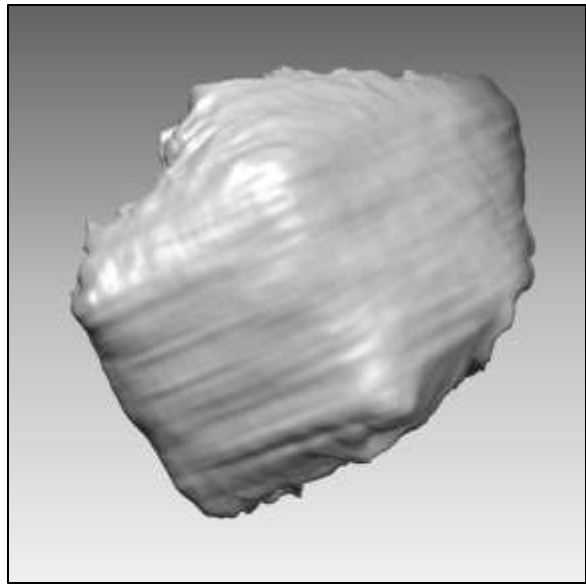
Metabolosome 20_01



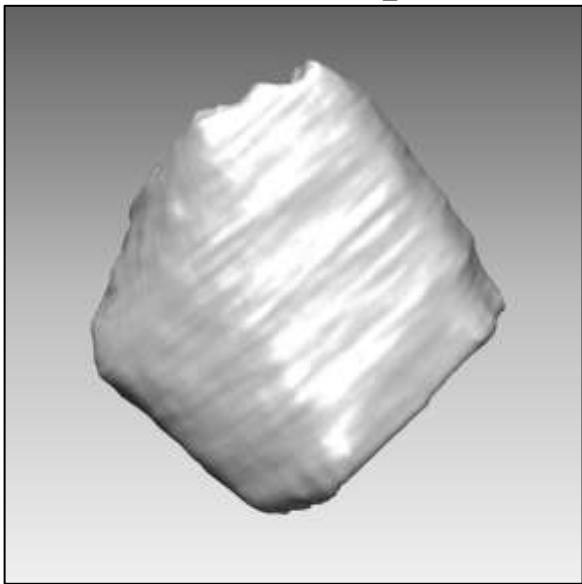
Metabolosome 20_02



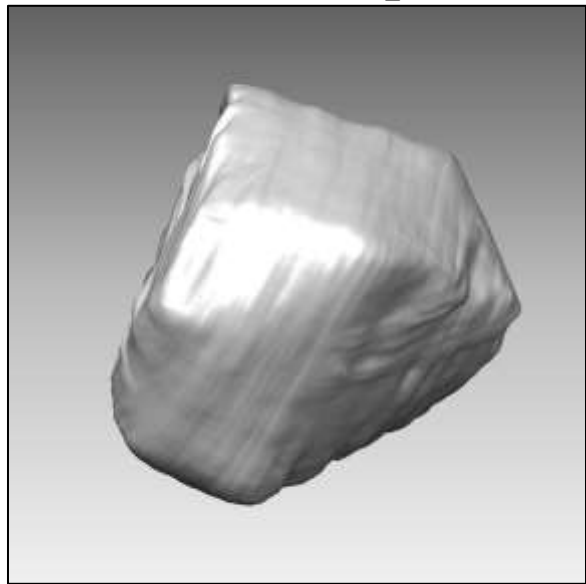
Metabolosome 20_04



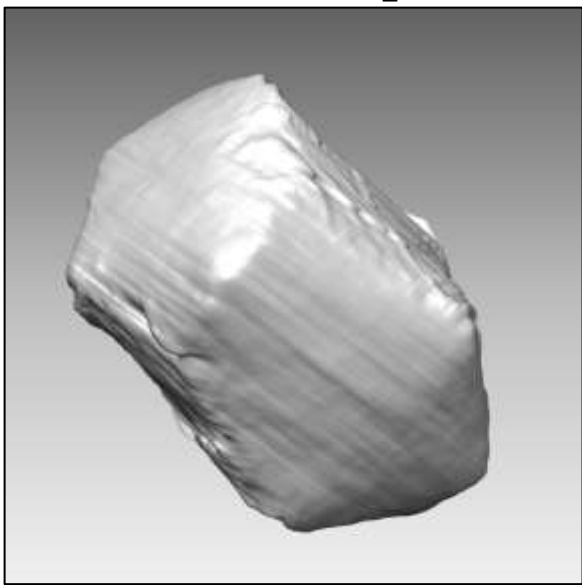
Metabolosome 20_05



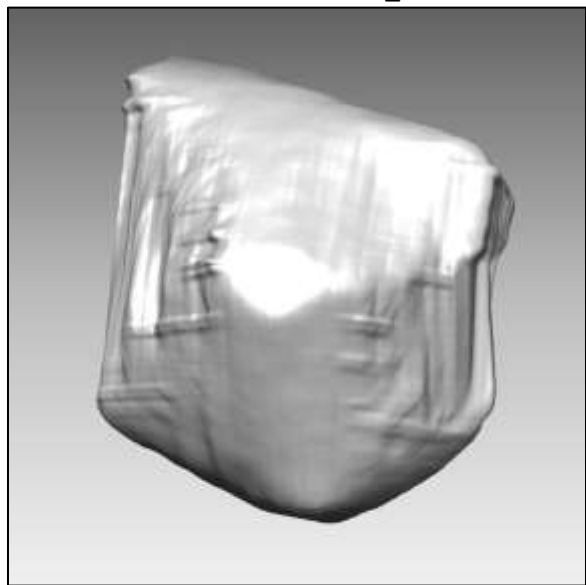
Metabolosome 20_06



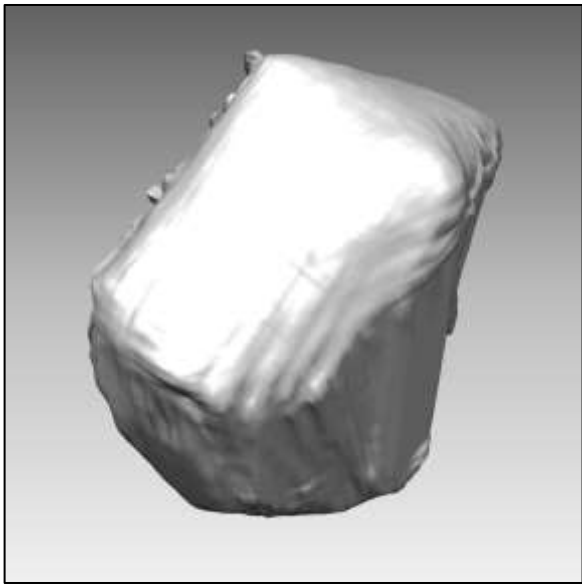
Metabolosome 20_08



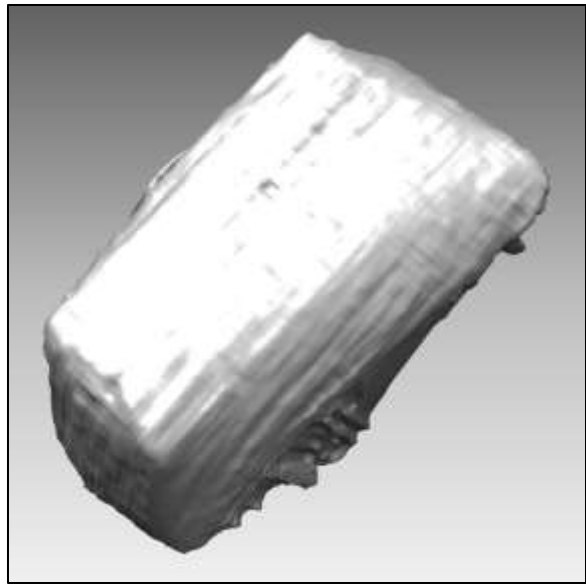
Metabolosome 20_09



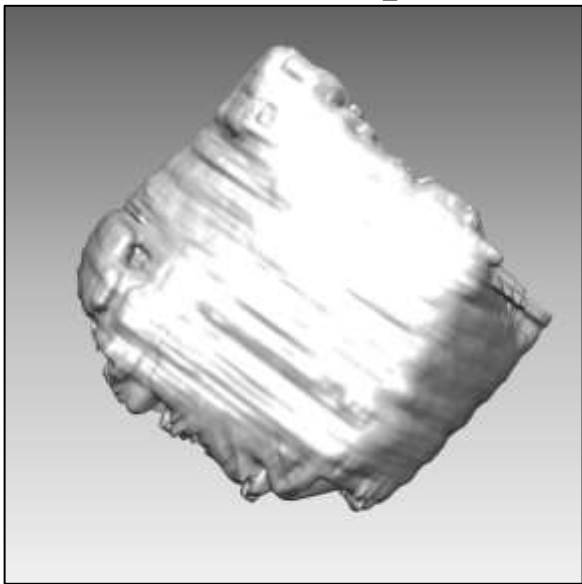
Metabolosome 20_10



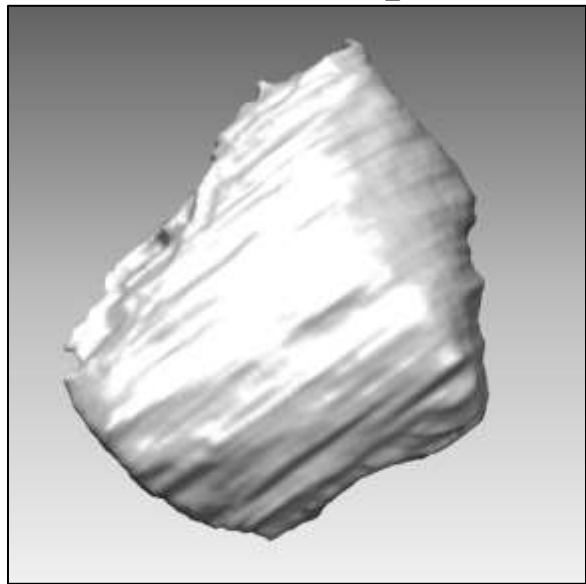
Metabolosome 20_11



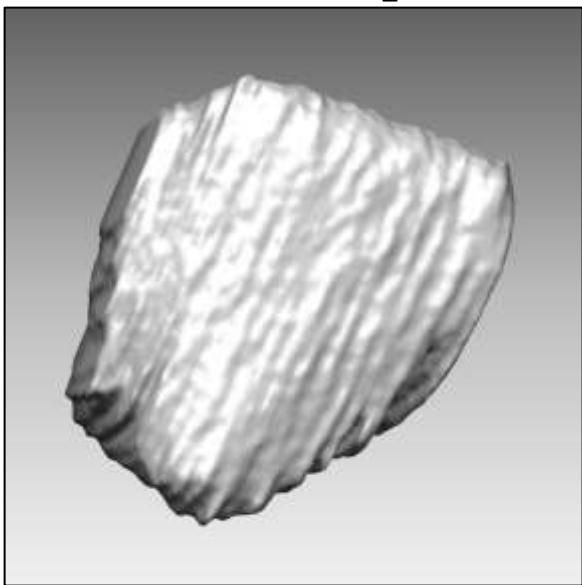
Metabolosome 34_01



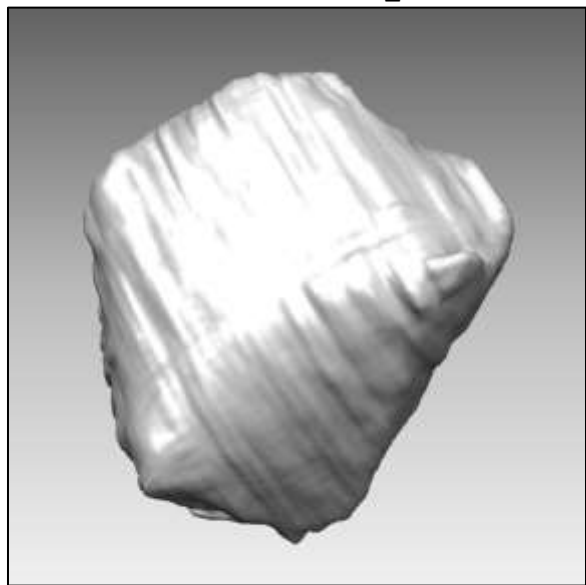
Metabolosome 34_02



Metabolosome 34_03



Metabolosome 41_01



Metabolosome 41_02

The above images are 2D representations (screenshots) of 30 segmented metabolosomes. The images are visualized using Chimera UCSF. The captions include Metabolosome identifier number which helps to relate their individual shapes from the following table and figures.

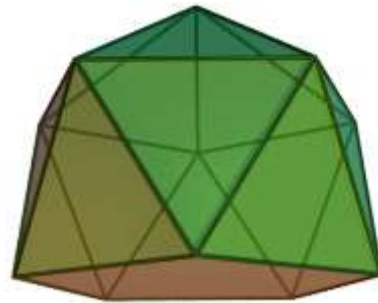
Metab. ID	Shape Name	Metab. ID	Shape Name
05_01	J17 - Gyroelongated square bipyramid	14_02	J86 - Sphenocorona
05_02	J11 - Gyroelongated pentagonal pyramid	20_01	J16 - Elongated pentagonal bipyramid
13_01	J16 - Elongated pentagonal bipyramid	20_02	J88 - Sphenomegacorona
13_02	J11 - Gyroelongated pentagonal pyramid	20_04	J50 - Biaugmented triangular prism
13_03	J16 - Elongated pentagonal bipyramid	20_05	J87 - Augmented sphenocorona
13_04	J86 - Sphenocorona	20_06	J86 - Sphenocorona
13_05	J86 - Sphenocorona	20_08	J87 - Augmented sphenocorona
13_06	J86 - Sphenocorona	20_09	J16 - Elongated pentagonal bipyramid
13_07	J16 - Elongated pentagonal bipyramid	20_10	J17 - Gyroelongated square bipyramid
13_08	J86 - Sphenocorona	20_11	J16 - Elongated pentagonal bipyramid
13_09	J88 - Sphenomegacorona	34_01	J16 - Elongated pentagonal bipyramid
13_12	J86 - Sphenocorona	34_02	J16 - Elongated pentagonal bipyramid
13_13	J54 - Augmented hexagonal prism	34_03	J16 - Elongated pentagonal bipyramid
13_14	J16 - Elongated pentagonal bipyramid	41_01	J62 - Metabidiminished icosahedron
14_01	J86 - Sphenocorona	41_02	J11 - Gyroelongated pentagonal pyramid

The above table provides the metabolosomes shapes predicted by SVM. The letter 'J' stands for Johnson Solids and the following number is the Johnson solids serial number, followed by the solid names.

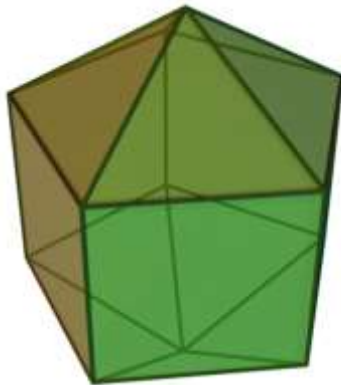
The following figures provide graphical representations of the predicted shapes of the metabolosomes. The images are from Wikipedia.



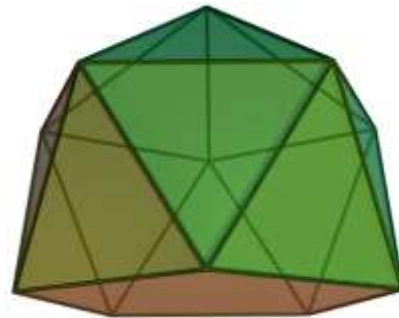
05_01: J17 - Gyroelongated square bipyramid



05_02: J11 - Gyroelongated pentagonal pyramid



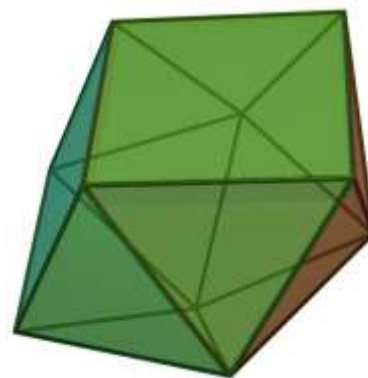
13_01: J16 - Elongated pentagonal bipyramid



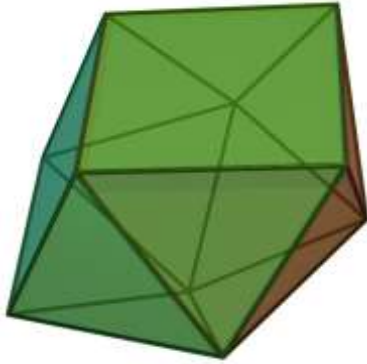
13_02: J11 - Gyroelongated pentagonal pyramid



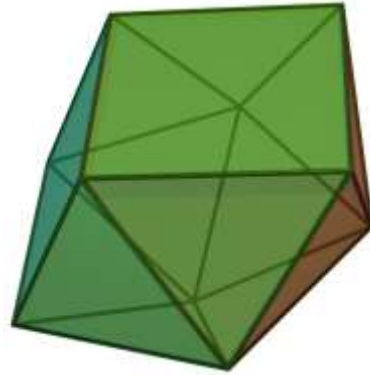
13_03: J16 - Elongated pentagonal bipyramid



13_04: J86 - Sphenocorona



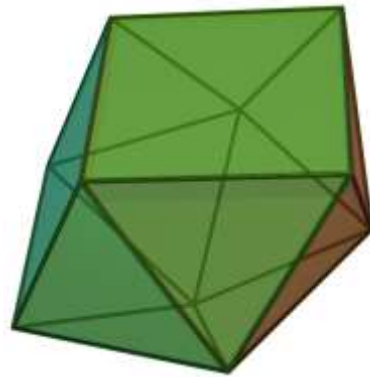
13_05: J86 - Sphenocorona



13_06: J86 - Sphenocorona



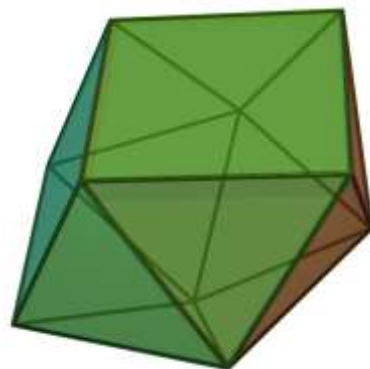
13_07: J16 - Elongated pentagonal bipyramid



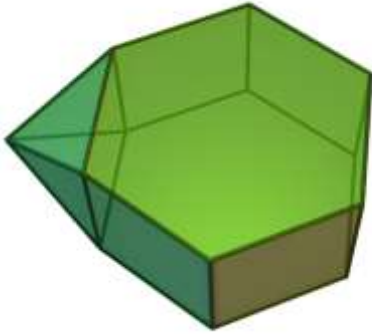
13_08: J86 - Sphenocorona



13_09: J88 - Sphenomegacorona



13_12: J86 - Sphenocorona



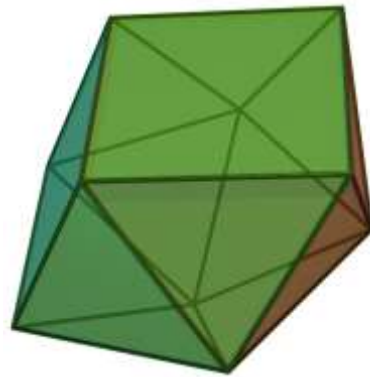
13_13: J54 - Augmented hexagonal prism



13_14: J16 - Elongated pentagonal bipyramid



14_01: J86 - Sphenocorona



14_02: J86 - Sphenocorona



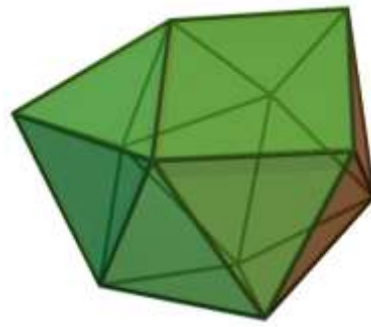
20_01: J16 - Elongated pentagonal bipyramid



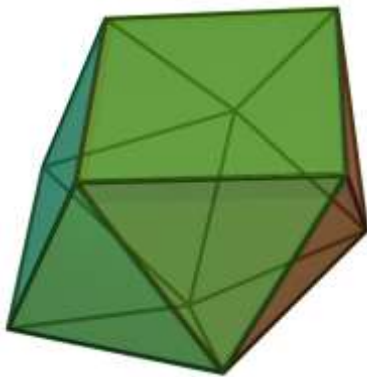
20_02: J88 - Sphenomegacorona



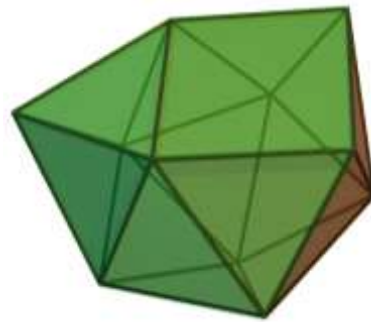
20_04: J50 - Biaugmented triangular prism



20_05: J87 - Augmented sphenocorona



20_06: J86 - Sphenocorona



20_08: J87 - Augmented sphenocorona



20_09: J16 - Elongated pentagonal bipyramid



20_10: J17 - Gyroelongated square bipyramid



20_11: J16 - Elongated pentagonal bipyramid



34_01: J16 - Elongated pentagonal bipyramid



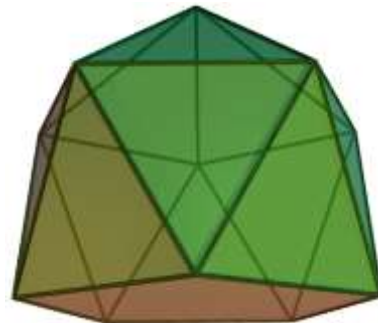
34_02: J16 - Elongated pentagonal bipyramid



34_03: J16 - Elongated pentagonal bipyramid



41_01: J62 - Metabidiminished icosahedron



41_02: J11 - Gyroelongated pentagonal pyramid