

**UCC Library and UCC researchers have made this item openly available.
Please [let us know](#) how this has helped you. Thanks!**

| | |
|------------------------------------|--|
| Title | Loss of skeletal muscle during systemic chemotherapy is prognostic of poor survival in patients with foregut cancer |
| Author(s) | Daly, Louise E.; Ní Bhuachalla, Éadaoin B.; Power, Derek G.; Cushen, Samantha J.; James, Karl; Ryan, Aoife M. |
| Publication date | 2018 |
| Original citation | Daly, L. E., Ní Bhuachalla, É. B., Power, D. G., Cushen, S. J., James, K. and Ryan, A. M. (2018) 'Loss of skeletal muscle during systemic chemotherapy is prognostic of poor survival in patients with foregut cancer', Journal of Cachexia, Sarcopenia and Muscle. doi: 10.1002/jcsm.12267 |
| Type of publication | Article (peer-reviewed) |
| Link to publisher's version | http://onlinelibrary.wiley.com/doi/10.1002/jcsm.12267/abstract http://dx.doi.org/10.1002/jcsm.12267 Access to the full text of the published version may require a subscription. |
| Rights | © 2018, the Authors. Journal of Cachexia, Sarcopenia and Muscle published by John Wiley & Sons Ltd on behalf of the Society on Sarcopenia, Cachexia and Wasting Disorders. Journal of Cachexia, Sarcopenia and Muscle (2018) Published online in Wiley Online Library (wileyonlinelibrary.com) DOI: 10.1002/jcsm.12267 This is an open access article under the terms of the Creative Commons Attribution-NonCommercial-NoDerivs License, which permits use and distribution in any medium, provided the original work is properly cited, the use is non-commercial and no modifications or adaptations are made. https://creativecommons.org/licenses/by-nc-nd/4.0/ |
| Item downloaded from | http://hdl.handle.net/10468/5502 |

Downloaded on 2021-01-25T17:49:25Z

Loss of skeletal muscle during systemic chemotherapy is prognostic of poor survival in patients with foregut cancer

Louise E. Daly^{1,2}, Éadaoin B. Ní Bhuachalla^{1,3}, Derek G. Power⁴, Samantha J. Cushen¹, Karl James⁵ & Aoife M. Ryan^{1,3*}

¹School of Food and Nutritional Sciences, College of Science, Engineering and Food Science, University College Cork, Cork, Ireland; ²APC Microbiome Institute, University College Cork, Cork, Ireland; ³Cork Cancer Research Centre, University College Cork, Cork, Ireland; ⁴Department of Medical Oncology, Mercy and Cork University Hospitals, Cork, Ireland; ⁵Department of Radiology, Cork University Hospital, Cork, Ireland

Abstract

Background Malnutrition, weight loss, and muscle wasting are common in patients with foregut cancers (oesophagus, stomach, pancreas, liver, and bile ducts) and are associated with adverse clinical outcomes. However, little is known about the changes in body composition that occur in these patients during chemotherapy and its impacts clinical outcomes.

Patients and methods A prospective study of adult foregut cancer patients undergoing chemotherapy between 2012 and 2016 was conducted. Computed tomography images were evaluated for cross-sectional skeletal muscle area (SMA) and adipose tissue area (ATA) at two time points [interval 118 days (IQR 92–58 days)]. Longitudinal changes in SMA and ATA were examined using paired *t*-tests. Sarcopenia and low muscle attenuation (MA) were defined using published cut-points. Cox proportional hazards models were used to estimate mortality hazard ratios for key predictors.

Results A total of 225 foregut cancer patients were included (67% male, median age 66 years). At baseline, 40% were sarcopenic, 49% had low MA, and 62% had cancer cachexia. Longitudinal analysis ($n = 163$) revealed significant reductions in SMA [-6.1 cm^2 (3.9%)/100 days, $P < 0.001$]. Patients treated with neoadjuvant chemotherapy experienced greater losses in SMA and skeletal muscle mass compared with patients receiving palliative chemotherapy [-6.6 cm^2 (95% confidence interval, CI: -10.2 to -3.1), $P < 0.001$ and -1.2 kg (95% CI: -1.8 to -0.5), $P < 0.001$, respectively]. Neither sarcopenia nor low MA at baseline was associated with reduced survival. A loss of SMA $>6.0\%/100$ days (highest fourth) independently predicted overall survival in patients receiving palliative chemotherapy [hazard ratio: 2.66, (95% CI: 1.42 to 4.97), $P = 0.002$].

Conclusions Patients with foregut cancers, particularly those treated with neoadjuvant chemotherapy, experience significant losses of muscle during chemotherapy. A high level of SMA loss is prognostic of reduced survival in patients treated with palliative chemotherapy. Multimodal interventions to stabilize or increase muscle mass and influence outcome warrant further investigation.

Keywords Body composition; Sarcopenia; Cachexia; Muscle attenuation; Cancer; Foregut

Received: 23 May 2017; Revised: 18 August 2017; Accepted: 12 October 2017

*Correspondence to: Dr Aoife Ryan, School of Food and Nutritional Sciences, College of Science, Engineering and Food Science, University College Cork, Cork, Ireland. Email: A.ryan@ucc.ie

Introduction

Cancers of the foregut (oesophagus, stomach, pancreas, liver, and bile ducts), collectively account for over 350 000 cancer diagnoses in Europe annually. The 5 year survival remains low; 11% in oesophageal, 25% in stomach, and 6% in pancreatic

cancer,¹ and they are historically associated with high rates of malnutrition that adversely effects clinical outcome.^{2–4}

Cancer cachexia (CC) is a multifactorial syndrome that is characterized by the loss of muscle with or without the loss of fat mass leading to progressive functional impairment.⁵ The syndrome encompasses involuntary weight loss,

anorexia, a low body mass index (BMI), systemic inflammation, metabolic changes, and/or low skeletal muscle mass (sarcopenia).⁵ Recent studies have shown that sarcopenia [assessed using computed tomography (CT) images] is common in foregut cancers with rates reported to be >40% in the setting of local^{6,7} and advanced disease.^{8,9} Sarcopenia is associated with physical disability,¹⁰ increased length of hospital stay,^{11–13} post-operative infections,¹² poorer tolerance to chemotherapy,^{7,14} and reduced survival.¹⁵ However, no consistent association between sarcopenia and reduced survival has been demonstrated in foregut cancers.^{7,8,16} CT images provide not only a quantitative measure but also a qualitative measure of skeletal muscle. Muscle radiation attenuation is a radiological characteristic, and skeletal muscle with a low radiation attenuation is reflective of intramuscular adipose tissue infiltration and poor 'quality' skeletal muscle.¹⁷ Importantly, low muscle attenuation (MA) is emerging as an important predictor of clinical outcome in patients with cancer and, in some instances, a stronger predictor of survival compared with muscle mass alone.^{15,18–20}

The precision associated with CT analysis of body composition has allowed recent investigations to focus on the nature and magnitude of changes in body composition during the disease trajectory in patients with cancer. However, these studies are typically retrospective with small sample sizes ranging from 35 to 65 patients^{6,9,16,21–25} and very few larger studies exist ($n > 100$).^{26–28}

Loss of muscle during anticancer treatment has been shown to be prognostic of reduced survival in ovarian,²⁸ colorectal,^{21,26} and pancreatic cancer patients;²² however, this has not been consistently demonstrated, and no effect was observed in gastro-oesophageal and pancreatic cancer patients.^{6,25} To our knowledge, larger studies evaluating the prevalence and significance of altered body composition that may occur in patients with foregut cancers undergoing standard chemotherapy are lacking.

The primary aim of this prospective study was to examine the longitudinal changes in body composition parameters using single slice CT images in foregut cancer patients undergoing chemotherapy and to determine if these changes had a prognostic impact on overall survival.

Methods

Study population

Adult patients (>18 years of age), with a solid malignancy of the foregut presenting for chemotherapy, were eligible to partake in this prospective observational study. All eligible patients were approached by a member of the research team (L. D., E. N. B., and S. C.), and data were collected from patients who provided informed written consent between June

2012 and September 2016. Subjects were admitted for chemotherapy to one of two university teaching hospitals in Cork City serving a catchment population of 870 000. Cork University Hospital is the regional cancer centre, and Mercy University Hospital is a satellite cancer centre as per the National Cancer Control Program. Both hospitals provide inpatient, day patient, and outpatient services along with a 24/7 emergency department. Mercy University Hospital is the specialist hospital for the surgical management of hepatopancreaticobiliary (HPB) and upper gastrointestinal cancers. Both hospitals have dedicated medical oncology wards, and Cork University Hospital is the regional centre for radiation oncology and is a level 1 trauma centre. The local ethics committee granted ethical approval for this study, and the study was performed in accordance with the ethical standards laid down in the 1964 Declaration of Helsinki and its later amendments.

Patient information recorded

On assessment, patient's weight, height, and BMI were recorded [weight (kg)/height (m²)]. BMI was classified according to WHO classifications of BMI. CC was defined based on the international consensus definition.⁵ Clinical and pathological data were collected during medical chart review and included information on patient demographics (age and gender), performance status (the Eastern Oncology Cooperative Group performance status), primary tumour site, stage and extent of metastatic disease (if present), oncological treatment, and type of chemotherapy. Cancer diagnoses were grouped and included gastro-oesophageal and HPB cancers (pancreatic, gallbladder, liver, and bile ducts). Response to chemotherapy was evaluated according to the response evaluation criteria in solid tumours criteria and obtained from patient's radiology reports. Patient's date of death from any cause (if present) or date of study completion (26/01/2017; censored date) was recorded.

Body composition assessment

Computed tomography images, taken as part of routine patient care, were used to assess body composition as previously described.²⁹ The third lumbar vertebrae were chosen as the standard landmark, and two consecutive transverse CT images where both transverse processes were clearly visible were analysed using OsiriX software version 4.1.1 (Pixmeo, Geneva, Switzerland), and the average result was reported. Different tissue compartments were manually outlined, and segmentation of the skeletal muscle and adipose tissue was based on Hounsfield unit (HU) thresholds (–29 to +150 HU and –30 to –190, respectively).³⁰ Skeletal muscle area (SMA) (cm²) and adipose tissue area (ATA)

(cm²) were automatically calculated by summing tissue pixels and multiplying by pixel surface area after applying HU thresholds. SMA and ATA were normalized for stature to compute the skeletal muscle index (SMI) and adipose tissue index (ATI) in cm²/m², respectively. Mean MA in HU was reported for the entire skeletal muscle area at the third lumbar vertebrae. Anonymized CT images were analysed by one trained study assessor who was blinded to the order of images. Pre-treatment images were taken prior to treatment administration (median 40 days; IQR 61 to 24 days). The median duration between scans was 118 days (IQR 92 to 158 days). To account for variation in the exact duration of scan intervals, changes in tissue are expressed as change/100 days.

Estimates of whole body fat mass (FM) and fat free mass (FFM) were calculated using published regression equations.³¹ To estimate total body skeletal muscle mass, the regression equation of Shen *et al.* was used.³² Changes are expressed as losses or gains of >1 kg of skeletal muscle mass (SMM) or FM on a whole body basis. It has previously been shown that 1 kg of skeletal muscle is associated with physical function (i.e. muscle strength)³³ and this cut point has been used to investigate significant changes in muscle mass throughout cancer disease trajectory previously.^{23,27,34} Sarcopenia and low MA were defined according to pre-published cut points; sarcopenia was defined as a SMI <43 cm²/m² in men with a BMI <25 kg/m², <53 cm²/m² in men with a BMI ≥25 kg/m², and <41 cm²/m² in women. Low MA was defined as a mean attenuation <41 HU in patients with a BMI <25 kg/m² and <33 HU in those with a BMI ≥25 kg/m².¹⁵

Statistical analysis

Statistical analysis was completed using SPSS (version 21.0, SPSS Inc., Chicago, IL, USA). Data are expressed as mean ± SD or median [IQR] where appropriate. Comparisons between groups of patients were assessed using chi-squared test for categorical variables and unpaired *t*-tests and Mann–Whitney *U*-tests to test for differences continuous variables. Paired *t*-tests were used to assess changes in body composition. The McNemar's test was to test for significances in paired categorical data. Variables that had significance of $P \leq 0.25$ on univariate analysis or had clinical relevance were eligible for inclusion in multivariable analysis. Survival curves were constructed using the Kaplan–Meier technique, and log-rank test was used to compare survival between groups of patients. Survival was measured from the date of the baseline (pre-treatment) CT image until the date of death or censored date (study completion). At the time of censoring, 88 of the 225 patients (39.1%) were still alive. Median follow-up time for these patients was 18.06 months [IQR 11.0 to 34.8 months]. Cox proportional hazard analyses were used to estimate adjusted hazard ratios (HR) with 95% confidence intervals (CI) calculated. All *P* values were two-sided, and the level of significance was $P < 0.05$.

Results

Participants

A total of 243 patients with a foregut tumour were enrolled in the study. Patients were excluded if they lacked an evaluable baseline CT image ($n = 18$). Therefore, 225 patients were included. MA analysis was carried out on all patients with a contrast enhanced CT image ($n = 202$).

Patient characteristics

Baseline characteristics are presented in *Table 1*. The majority of patients were male (67%), with a median age of 66 years (IQR 36 to 82 years). Oesophageal cancer was most prevalent (44%), and 51% of patients had stage IV disease. All patients were receiving standard systemic chemotherapy (*Table S1*).

Anthropometry and body composition

Baseline anthropometric and nutritional characteristics are presented in *Table 2*. In brief, the majority of the cohort was overweight/obese (52.4%); however, 62% met the criteria for CC, 40% were sarcopenic, and 49% had low MA. Cachexia and sarcopenia were most prevalent in patients with pancreatic cancer (71% and 47%, respectively) (*Figure S1*).

Table 1 Demographic and clinical characteristics of patients included in this study

| | Total $n = 225$ |
|--|------------------|
| Age and median (range) | 65.6 (35.8–83.4) |
| Male | 150 (66.7) |
| Current smoker, n (%) | 38 (16.9) |
| Current drinker, n (%) | 94 (41.8) |
| Tumour location, n (%) | |
| Gastro-oesophageal | 138 (61.3) |
| Oesophageal and GO junction | 99 (44.0) |
| Gastric | 39 (17.3) |
| Hepato pancreato-biliary | 87 (38.7) |
| Pancreatic | 55 (24.4) |
| Cholangiocarcinoma | 18 (8.0) |
| Gallbladder | 10 (4.4) |
| Liver | 4 (1.8) |
| Tumour stage, n (%) | |
| I | 7 (3.1) |
| II | 40 (18.2) |
| III | 62 (27.6) |
| IV | 116 (51.1) |
| ECOG, n (%) | |
| 0–1 | 176 (78.2) |
| >2 | 49 (22.7) |
| Chemotherapy (±radiotherapy) received, n (%) | |
| Palliative | 126 (56.0) |
| Definitive chemorads | 14 (6.2) |
| Neoadjuvant | 54 (24.0) |
| Adjuvant | 31 (13.8) |

ECOG, Eastern Cooperative Oncology Group; GO, Gastro-oesophageal.

Table 2 Anthropometric and nutritional status characteristics of patients according to gender, values expressed as mean (standard deviation), unless stated otherwise

| Characteristic | Men, n = 150 | Women, n = 75 | Total, n = 225 | P value |
|--|---------------|---------------|----------------|---------|
| Weight (kg) | 77.9 (12.9) | 62.7 (13.6) | 72.8 (14.9) | <0.001 |
| Height (m) | 1.75 (0.07) | 1.61 (0.08) | 1.7 (0.09) | <0.001 |
| BMI (kg/m ²), n (%) | 25.5 (3.9) | 24.1 (4.9) | 25.1 (4.3) | 0.024 |
| Underweight (\leq 18.5) | 8 (5.3) | 9 (12.0) | 17 (7.6) | 0.129 |
| Normal (18.5–24.9) | 56 (37.3) | 34 (37.3) | 90 (40.0) | 0.312 |
| Overweight (25–29.9) | 66 (44.0) | 22 (29.3) | 88 (39.1) | 0.048 |
| Obese (\geq 30.0) | 20 (13.3) | 10 (13.3) | 30 (13.3) | 1.00 |
| Cachexia, n (%) | 91 (60.7) | 48 (64.0) | 139 (61.8) | 0.734 |
| Muscle parameters | | | | |
| Skeletal muscle area (cm ²) | 162.5 (25.2) | 105.3 (15.2) | 143.5 (35.0) | <0.001 |
| Skeletal muscle index (cm ² /m ²) | 53.5 (8.3) | 40.6 (5.9) | 49.2 (9.7) | <0.001 |
| Sarcopenia, n (%) | 42 (28.0) | 48 (64.0) | 90 (40.0) | <0.001 |
| Estimated FFM (kg) ^a | 54.8 (7.6) | 37.6 (4.5) | 49.1 (10.5) | <0.001 |
| Estimated SMM (kg) ^a | 30.3 (4.34) | 20.41 (2.61) | 26.99 (6.05) | <0.001 |
| Muscle attenuation (HU) ^b | 37.5 (7.3) | 35.6 (7.6) | 36.8 (7.5) | 0.080 |
| Low muscle attenuation, n (%) ^b | 55 (42.0) | 45 (63.4) | 100 (49.5) | 0.006 |
| Fat parameters | | | | |
| Adipose tissue area (cm ²) | 346.1 (165.5) | 293.6 (160.0) | 328.7 (165.2) | 0.028 |
| Adipose tissue index (cm ² /m ²) | 114.2 (54.6) | 113.6 (63.0) | 113.9 (57.4) | 0.942 |
| Estimated FM (kg) ^a | 25.7 (6.9) | 23.5 (6.7) | 25.0 (6.9) | 0.027 |

BMI, body mass index; FM, fat mass; FFM, fat free mass; HU, Hounsfield units; kg, kilogram; SD, standard deviation; SMM, skeletal muscle mass.

^aEstimated kilograms of FFM and FM are calculated from regression equations reported by Mourtzakis et al.³¹ and estimated kilograms of SMM are calculated from regression equations reported by Shen et al.³²

^bMuscle attenuation analysis based on 202 patients (131 men and 71 women).

More women were sarcopenic (64% vs. 28%, $P < 0.001$) and had low MA (63% vs. 42%, $P = 0.006$) compared with men. CC, sarcopenia, and low MA were present in all BMI categories, in fact, in those with a BMI >25 kg/m², 72% had CC, 41% had sarcopenia, and 56% had low MA.

Patients with sarcopenia had lower BMI (23.9 vs. 25.8 kg/m², $P = 0.001$) and, as expected, had lower SMA (men 169.4 vs. 144.8 cm², $P < 0.001$; women 97.8 vs. 118.7 cm², $P < 0.001$), SMI (men 46.9 vs. 56.0 cm²/m², $P < 0.001$; women 36.9 vs. 47.2 cm²/m², $P < 0.001$), and FFM (men 49.5 vs. 56.9 kg, $P < 0.001$; women 35.4 vs. 41.7 kg, $P < 0.001$). Female patients with sarcopenia had a lower ATA (366.2 vs. 254.1 cm², $P = 0.004$), ATI (146.3 vs. 95.7 cm²/m², $P = 0.001$), and FM (26.6 vs. 21.9 kg, $P = 0.004$), and this was not observed in male patients. Patients with sarcopenia did not differ in age (64.8 vs. 63.9 years, $P = 0.510$) and had similar clinical features to non-sarcopenic patients.

Longitudinal changes in body composition

Longitudinal changes in body composition were assessed in a subset of patients who had a repeat CT image taken as part of their medical management ($n = 163$; 104 men and 59 women). The changes are presented in Table 3. Changes in overall body weight (kg) were not recorded.

On average, patients lost 6.1 cm² (95% CI: -7.7 to -4.5 cm², $P < 0.001$) of SMA per 100 days, corresponding

to 1.0 kg of SMM and 2.0 kg of FFM on a whole body basis. Men lost more SMA than women [8.5 cm² (1.5 kg of SMM)/100 days vs. 1.8 cm² (0.3 kg SMM)/100 days, $P < 0.001$], amounting to a relative rate of loss of 5.0% vs. 1.8% per 100 days ($P = 0.002$). Patients without sarcopenia (at baseline) lost more SMA [8.9 cm² (1.5 kg SMM) vs. 2.0 cm² (0.3 kg SMM)/100 days, $P < 0.001$] and FFM (4.9 vs. 1.0 kg/100 days, $P < 0.001$), compared with sarcopenic patients. The prevalence of sarcopenia increased from 40.5% (66 out of 163) at baseline to 49.1% (80 out of 163) at the time of the second scan ($P = 0.016$). Changes in skeletal muscle did not significantly differ between cancer types (all $P = NS$). Patients experienced significant losses in ATA [-17.31 cm²/100 days (95% CI: -28.07 to -6.54), $P = 0.002$], equivalent to 0.73 kg/100 days (95% CI: -1.18 to -0.27 , $P = 0.002$) on a whole body basis. MA decreased by -0.84 HU (95% CI: -1.59 to -0.08 HU, $P = 0.031$) per 100 days. Changes in MA and measures of adiposity did not significantly differ between gender, cancer type, or the presence of sarcopenia (all $P = NS$).

Mean losses of muscle and adipose tissue obscure the fact that, in some instances, muscle and adipose tissue was gained or remained stable. The ranges of SMM change (-6.2 to 4.6 kg/100 days) and FM change (-7.7 to 5.6 kg/100 days) are displayed in Figure 1A and 1B, respectively. Overall, 45.4% of patients lost SMM, while 46% remained muscle stable (± 1 kg). It is important to note that 23.9% of patients that lost >1 kg of SMM had a concurrent gain of >1 kg of FM.

Table 3 Change in skeletal muscle and adipose tissue area (cm²) per 100 days according to cancer type

| Tissue | Change per 100 days | | | Relative change per 100 days (%) | | |
|---|---------------------|----------------|--------|----------------------------------|---------------|--------|
| | Mean | 95% CI | P | Mean | 95% CI | P |
| Skeletal muscle area (cm²) | | | | | | |
| All foregut cancers (n = 163) | -6.1 | -7.7 to -4.4 | <0.001 | -3.9 | -4.9 to -2.8 | <0.001 |
| Gastro-oesophageal, (n = 99) | -7.7 | -9.9 to -5.5 | <0.001 | -4.8 | -6.2 to -3.5 | <0.001 |
| Gastric, (n = 27) | -7.9 | -12.2 to -3.7 | 0.001 | -4.2 | -7.1 to -1.3 | 0.006 |
| Oesophageal, (n = 72) | -7.6 | -10.3 to -4.9 | <0.001 | -5.1 | -6.7 to -3.5 | <0.001 |
| Hepato pancreato-biliary, (n = 64) | -3.6 | -5.8 to -1.4 | 0.002 | -2.5 | -4.1 to -0.8 | 0.004 |
| Pancreatic, (n = 40) | -4.0 | -7.0 to -1.1 | 0.009 | -2.9 | -5.2 to -0.8 | 0.010 |
| Biliary (gallbladder, liver, and bile duct), (n = 24) | -2.8 | -6.2 to 0.7 | 0.111 | -1.6 | -4.2 to 1.0 | 0.212 |
| Total adipose tissue area (cm²) | | | | | | |
| All foregut cancers (n = 154) | -17.3 | -28.1 to -6.5 | 0.002 | -3.5 | -7.7 to 0.7 | 0.105 |
| Gastro-oesophageal, (n = 93) | -12.7 | -26.6 to 1.2 | 0.074 | -1.8 | -7.6 to 4.0 | 0.533 |
| Gastric, (n = 26) | -17.0 | -44.1 to 10.0 | 0.207 | 0.1 | -15.9 to 16.0 | 0.994 |
| Oesophageal, (n = 67) | -11.0 | -27.7 to 5.6 | 0.191 | -2.6 | -8.0 to 2.9 | 0.357 |
| Hepato pancreato-biliary, (n = 61) | -24.3 | -41.6 to -7.0 | 0.007 | -6.0 | -12.3 to 0.1 | 0.054 |
| Pancreatic, (n = 39) | -33.5 | -55.2 to -11.9 | 0.003 | -8.8 | -16.4 to -1.2 | 0.024 |
| Biliary (gallbladder, liver, and bile duct), (n = 22) | -8.0 | -38.0 to 21.9 | 0.583 | -1.1 | -12.0 to 9.8 | 0.837 |

CI, confidence interval.

Palliative vs. neoadjuvant chemotherapy

Changes in SMA, FFM, and SMM per 100 days varied significantly between chemotherapy types [palliative (n = 89), definitive chemo-radiotherapy (n = 3), neoadjuvant (n = 47), and adjuvant (n = 24)] (P < 0.001). The significant differences were observed among those treated with palliative and neoadjuvant chemotherapy (NACT) (Table 4). Patients treated with NACT experienced greater losses in SMA, FFM, and SMM compared with patients treated with palliative chemotherapy. No difference was observed in changes of ATA, FM, or MA between chemotherapy types. Patients treated with palliative and NACT did not significantly differ in terms of age, gender, or body composition at baseline.

Response to treatment and changes in body composition

Response to treatment was evaluated in 157 of the 163 patients. Of these, 56 patients (36%) responded to chemotherapy, while 62 (39%) progressed and 39 (25%) had stable disease. Overall, no difference was observed in changes in body composition parameters and response to treatment. However, within those treated with NACT, patients who responded (23/45 patients) to treatment lost less muscle (1.4 vs. 2.6 kg of SMM/100 days, P = 0.090; -4.0% vs. -8.7% of SMA/100 days, P = 0.034) and gained adipose tissue (+0.7 vs. -1.2 kg of FM/100 days, P = 0.017; +5.4% vs. -10.8% of ATA/100 days, P = 0.019) compared with those who did not respond.

Body composition and survival

Median overall survival (OS) for the entire cohort was 15.7 months (95% CI: 14.0 to 17.4 months). Patients with

gastro-oesophageal cancer had a significantly longer survival than those with HPB cancer (19.7 vs. 13.5 months, log-rank P < 0.001). As expected, patients treated with palliative chemotherapy had a significantly shorter OS compared with those receiving treatment with a curative intent [11.7 months (95% CI: 9.9 to 13.5) vs. 36.9 months (95% CI: 18.7 to 55.2), log-rank P < 0.001].

To examine the effect of relative muscle loss on survival, quartiles of muscle change were devised. No effect on survival was observed when the whole cohort was examined together or in those treated with curative intent; however, within this group, a large proportion of cases was censored (60%). Conversely, in patients treated with palliative chemotherapy [n = 89; 23 (26%) censored], survival curves were significantly different across quartiles of %SMA change/100 days (log-rank P = 0.031). A median OS of 15.9, 15.7, 12.2, and 7.9 months was observed for group 1 [muscle gain (≥0.85%/100 days)], group 2 [stable/minor muscle loss (<0.85% to -2.35%/100 days)], group 3 [muscle loss (-2.35 to -6.0%/100 days)], and group 4 (highest muscle loss >6.0%/100 days), respectively. Patients with a muscle loss of >6.0%/100 days (group 4; highest muscle loss) had significantly lower OS compared with those with a muscle loss ≤6.0%/100 days [7.9 months (95% CI: 6.7 to 9.1) vs. 15.6 months (95% CI: 13.3 to 17.9), respectively, (log rank; P = 0.006)] (Figure 2). On multivariate analysis, muscle loss of ≥6.0% remained independently associated with shorter survival [HR: 2.66, (95% CI: 1.42 to 4.97), P = 0.002] (Table 5).

Neither sarcopenia nor low MA at baseline was associated with shorter OS. Foregut cancer patients with CC had a shorter median survival [15.1 months (95% CI: 13.1 to 17.1)] compared with patients without CC [17.5 months (95% CI: 12.5 to 22.6), log rank P = 0.035; univariate analysis HR: 1.46 (95% CI: 1.03 to 2.09), P = 0.036]. However, after accounting for known prognostic covariates in a multivariate model (age, gender, cancer type, cancer stage, and the

Figure 1 (A) Change in skeletal muscle mass (SMM) (kg) per 100 days in patients with cancers of the foregut ($n = 163$) and (B) change in fat mass (FM) (kg) per 100 days in patients with cancers of the foregut ($n = 154$).

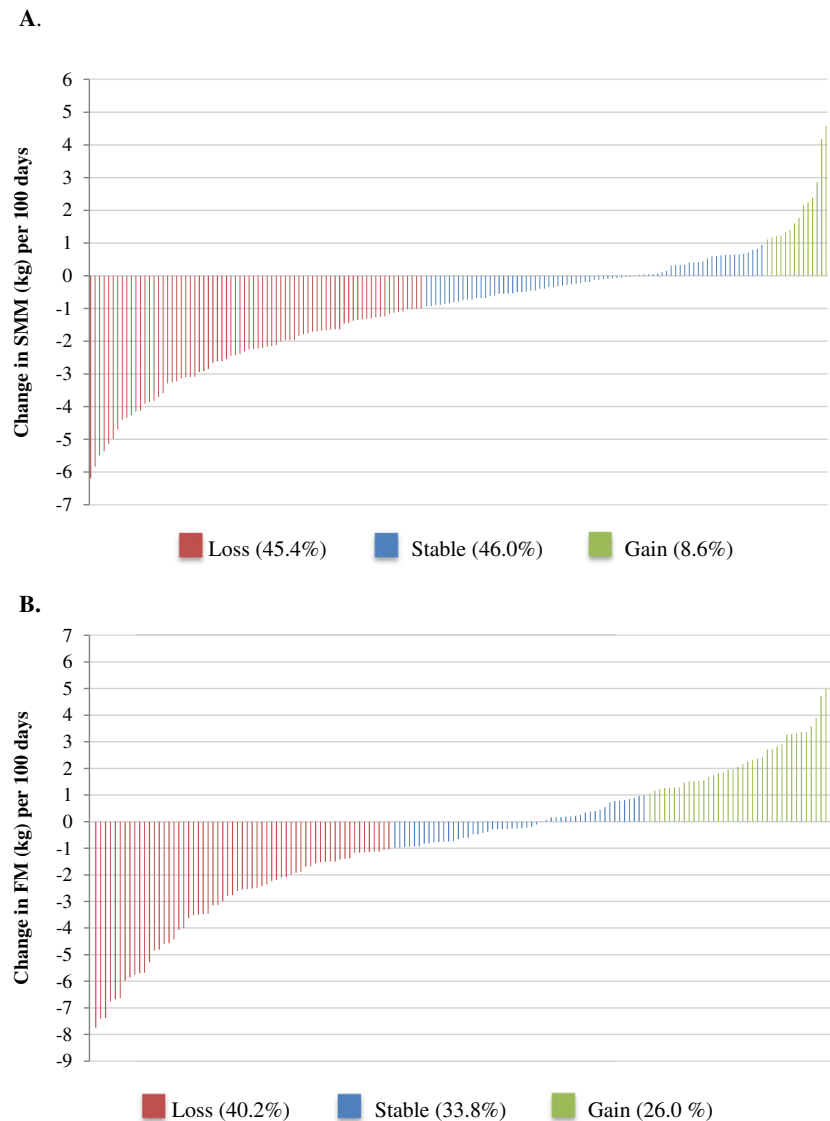
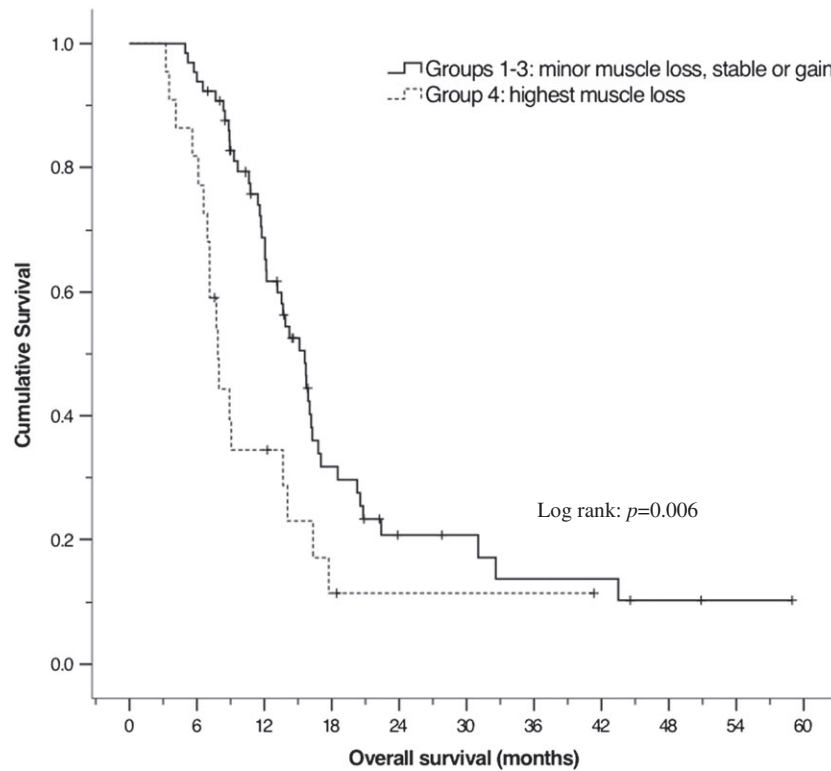


Table 4 Change in measures of muscle mass in patients treated with palliative vs. neoadjuvant chemotherapy. All values expressed as mean change (95% CI) per 100 days

| | Palliative chemotherapy ($n = 89$) | Neoadjuvant chemotherapy ($n = 47$) | Mean difference | <i>P</i> value |
|--------------------------------|--------------------------------------|---------------------------------------|----------------------|----------------|
| | Mean (95% CI) | Mean (95% CI) | Mean (95% CI) | |
| Δ SMA (cm^2) | -4.7 (-6.6 to -2.8) | -11.3 (-14.7 to -7.96) | -6.6 (-10.2 to -3.1) | <0.001 |
| Δ SMA (%) | -2.8 (-4.2 to -1.4) | -7.3 (-9.1 to -5.4) | -4.5 (-6.8 to -2.1) | <0.001 |
| Δ FFM (kg) | -1.4 (-3.7 to -1.3) | -3.4 (-4.4 to -2.4) | -2.0 (-3.1 to -0.9) | <0.001 |
| Δ FFM (%) | -2.5 (-3.7 to -1.3) | -6.3 (-8.4 to -4.2) | -3.8 (-6.0 to -1.6) | 0.001 |
| Δ SMM (kg) | -0.8 (-1.1 to -0.5) | -1.9 (-2.4 to -1.4) | -1.2 (-1.8 to -0.5) | <0.001 |
| Δ SMM (%) | -2.6 (-3.9 to -1.4) | -6.6 (-8.8 to -4.5) | -4.0 (-6.3 to -1.7) | 0.001 |

All changes in measures of SMA (cm^2 and %), FFM (cm^2 and %), and SMM (cm^2 and %) listed within groups have a $P < 0.001$. CI, confidence interval; FFM, fat free mass; SMA, skeletal muscle area; SMM, skeletal muscle mass.

Figure 2 Kaplan–Meier curves for groups of relative muscle change (% change skeletal muscle area/100 days). Patients with a muscle loss of $\geq 6.0\%$ /100 days (group four, highest amount of muscle loss) had significantly lower overall survival compared with those with a muscle loss $< 6.0\%$ /100 days (groups one to three; minor muscle loss/stable or gain). Censored cases are indicated by +.



Eastern Oncology Cooperative Group), CC did not remain significant (HR: 1.33 (95% CI: 0.93 to 1.90), $P = 0.124$).

Discussion

Our study details the changes in body composition in foregut cancer patients undergoing chemotherapy, highlighting the magnitude of muscle and adipose tissue wasting over time, particularly in patients treated with NACT. We describe the

adverse prognostic impact of muscle loss on survival in patients treated with palliative chemotherapy.

Our data underscore the critical importance of muscle tissue assessment in patients with foregut cancer undergoing chemotherapy. High rates of cachexia (62%), sarcopenia (40%), and low MA (49%) were observed (despite a high BMI), and this is in line with previous research.^{8,19,35} Compounding this is the ongoing loss of muscle patients experience undergoing chemotherapy, with a relative muscle loss of 3.9%/100 days ($P < 0.001$). This is considerably

Table 5 Estimated crude and adjusted HRs for factors thought to be associated with overall survival in patients receiving palliative chemotherapy ($n = 89$)

| | Univariate analysis | | Multivariate analysis | |
|--|---------------------|----------------|-----------------------|----------------|
| | HR (95% CI) | <i>P</i> value | HR (95% CI) | <i>P</i> value |
| Gender (ref male) | 1.00 (0.61–1.64) | 0.998 | 0.73 (0.39–1.38) | 0.333 |
| Age > 65.6 years | 0.76 (0.46–1.25) | 0.281 | 0.77 (0.44–1.33) | 0.342 |
| Current smoker | 1.29 (0.74–2.22) | 0.374 | | |
| HPB cancer (ref GO cancer) | 1.83 (1.11–3.01) | 0.018 | 2.02 (1.09–3.76) | 0.026 |
| ECOG PS > 2 (ref 0–1) | 1.75 (0.95–3.24) | 0.074 | 2.21 (1.12–4.26) | 0.017 |
| BMI < 25 kg/m ² (ref > 25 kg/m ²) | 1.47 (0.90–2.41) | 0.128 | 1.64 (0.98–2.74) | 0.062 |
| Cachexia | 0.81 (0.49–1.33) | 0.397 | | |
| Sarcopenia | 1.12 (0.69–1.83) | 0.649 | | |
| Low MA | 1.12 (0.67–1.85) | 0.667 | | |
| Muscle loss $> 6\%$ (ref $< 6\%$) | 2.11 (1.22–3.67) | 0.008 | 2.66 (1.42–4.97) | 0.002 |

BMI, body mass index; CI, confidence interval; ECOG PS, the Eastern Oncology Cooperative Group performance score; GO, gastro-oesophageal; HPB, hepato-pancreato-biliary; HR, hazard ratio; MA, muscle attenuation; ref, reference.

greater compared with ageing healthy adults, who typically lose muscle at a rate of 1–1.4% per year.^{36,37} However, the mean rate of muscle loss is comparable with that observed in advanced pancreatic cancer patients ($-3.1 \pm 12\%/100$ days) receiving palliative care ($n = 44$)²⁵ and a recent report from our own group in metastatic melanoma patients ($-3.3 \pm 5.8\%/100$ days) receiving immunotherapy ($n = 59$).³⁸ Higher rates of muscle loss were observed in patients treated with NACT ($-7.3\%/100$ days), similar to those observed in ovarian cancer patients ($-5.2 \pm 9.8\%/100$ days) undergoing NACT ($n = 123$).²⁸ Other studies have reported significant reductions in skeletal muscle in a variety of cancer types^{8,24,26,39} but failed to report these as a change/100 days, which makes it difficult to compare with our cohort given the heterogeneity in the interval between scans.

We reported herein that foregut cancer patients receiving palliative chemotherapy with a muscle loss $>6\%/100$ days were at a significantly increased risk of mortality. The increased mortality risk may be attributed to a more aggressive tumour profile in patients with muscle loss. Alternatively, patients with muscle loss may experience a higher degree of cachexia. Cachexia induces systemic inflammation and metabolic alterations, which in combination with a decrease in body protein stores may explain the poor prognosis in these patients. Loss of muscle mass may also affect the tolerability of systemic chemotherapy. Foregut cancer patients with low muscle mass are more prone to severe treatment-related toxicities, resulting in fewer completed cycles of chemotherapy.^{7,14,39} This may result in inferior disease control and adversely impact on survival.

Our results corroborate the findings in metastatic colorectal cancer patients ($n = 63$) and metastatic melanoma patients ($n = 59$), whereby a loss of muscle $>9\%$ over 3 months of chemotherapy and $>7.5\%/100$ days while undergoing immunotherapy, respectively, was independently associated with reduced survival.^{21,38} Similarly, Miyamoto *et al.*²⁶ reported a muscle loss $>5\%$ during chemotherapy was significantly associated with poorer overall survival and progression free survival in unresectable colorectal cancer patients ($n = 148$). In contrast to our findings, Tan *et al.*²⁵ observed no significant difference in survival across tertiles of muscle loss in a small cohort of advanced pancreatic cancer patients ($n = 44$). Of note, patients in that study had a much poorer prognosis with a median survival of 4 months, compared with a median survival of 12 months in the present study. Moreover, the second CT scan was taken on average 95 days before death, indicating that patients may have been entering the refractory-cachexia phase. Therefore, the maintenance or gain of skeletal muscle in that setting may have only limited clinical benefit. In the neoadjuvant setting, Rutten *et al.*²⁸ reported that a loss of muscle $>2\%/100$ days was independently associated with reduced survival in ovarian cancer patients [HR: 1.77 (95% CI 1.018 to 3.088, $P = 0.043$)]. Within our cohort, the relationship between the magnitude of muscle loss and mortality in

patients treated with NACT was difficult to determine given the large proportion of censored cases (60%) at the time of analysis. However, it is possible that the impact of muscle loss may vary with cancer diagnosis, treatment, and overall prognosis. This has been observed in colorectal cancer patients; sarcopenia was predictive of survival in patients undergoing curative resection but not in patients with unresectable disease receiving chemotherapy.^{26,40}

Sarcopenia and low MA at baseline were not associated with reduced survival. This is in contrast to some^{10,15,25} but not all research findings.^{8,16,21,24,41} This may be reflective of the fact that sarcopenia (at one time point) is not a measure of actual muscle loss and may be influenced by patients intrinsic level of muscularity. Alternatively, this may be reflective of the validity of commonly used cut points (for SMI) to diagnose sarcopenia. To date, no consensus exists on the optimal cut points to define sarcopenia in patients with cancer. Many cut points have been reported, which have been shown to vary widely in male (36 to 55.4 cm²/m²) and female (29 to 42.1 cm²/m²) patients.⁴² Therefore, careful consideration should be given to the choice of cut point to define sarcopenia. Several factors influence patients muscularity (e.g. ethnicity, age, gender, obesity, socio-economic factors, and dietary habits), on which the cut point is dependant and should be taken into account. Ideally, cut points for sarcopenia and low MA would be ethnically specific; however, in the absence of well-defined and validated cut points derived from European populations, we chose to use the cut points for sarcopenia and low MA reported by Martin *et al.*¹⁵ These cut points were devised from the largest available data set to date and are BMI specific. They were devised from a heterogenous group of patients in terms of cancer site, stage, and performance status, similar to our cohort. In addition, they have been validated to predict survival in a number of external cohorts.^{43,44} However, large international (and European specific) data repositories are needed to further address this issue and define the most robust diagnostic criteria for sarcopenia in patients with cancer.

Loss of muscle in this cohort is likely multifactorial. It may be reflective of advancing disease, with the release of pro-inflammatory cytokines associated with the underlying malignancy promoting muscle protein catabolism.⁴⁵ In line with this, we noted that response to treatment and reduction in tumour burden was associated with less muscle loss in patients treated with NACT, and similar results have been reported in gastric³⁹ and lung cancer.²⁴ Reduced physical activity would undoubtedly contribute to muscle loss, and studies have shown that cancer patients are physically inactive.⁴⁶ Muscle loss may also be as a consequence of some cancer directed therapies.⁴⁷

Our findings highlight the critical need for effective interventions to address muscle degradation and to negate the adverse outcomes associated with the phenomenon. To date, no pharmacotherapies have been approved for the treatment of the cancer cachexia syndrome, although phases II and III trials have yielded encouraging results.^{48,49} It has been

proposed that multimodal interventions are required to address the multifactorial syndrome.^{50,51} One such intervention that is currently under investigation is the multimodal exercise/nutrition/anti-inflammatory treatment for cachexia trial, whereby phase II studies have yielded encouraging results.⁵² The phase III trial (NCT02330926) is currently being conducted across a number of international sites, the results of which are eagerly awaited. Furthermore, future studies examining cachexia interventions should consider recruiting patients beyond those with weight loss/cachexia at baseline (typical inclusion criteria of weight loss >5%). A study examining the inclusion criteria for cancer cachexia clinical trials identified that 41% of patients excluded from the trial due to insufficient weight loss (<5%) had a skeletal muscle loss >5% but had a concurrent gain of visceral adipose tissue.⁵³ Similarly, within our study, 24% of patients with a muscle loss (>1 kg) had a concurrent gain in fat mass (>1 kg), which can often lead to no net change in body weight.

Despite the relatively large sample size, this study has limitations. Patients were excluded if CT scans were not available, which may result in selection bias. Measures of food intake and physical activity were not collected in the present study, which represent a limitation as both may influence muscle mass and body composition, and particularly its change within this study. In addition, muscle depletion is only one aspect of functional depletion, and muscle function and strength were not measured in this study but should be investigated further. Future studies must focus on the aetiology of body composition change in patients with cancer and determine if these changes are preventable or reversible.

In conclusion, significant muscle loss occurred in patients with foregut cancers during chemotherapy, particularly in those treated with NACT. In patients receiving palliative chemotherapy, a muscle loss of 6% or more was independently associated with poorer survival. The routine availability of CT scans in oncology represents a unique and exploitable

opportunity to assess body composition change, identifying those at nutritional risk and allowing earlier nutritional intervention. Prevention of cancer cachexia and its associated muscle loss have huge potential to improve patient focused clinical outcomes; however, better treatment options are sorely needed.

Acknowledgements

We would like to acknowledge the support of the Health Research Board Clinical Research Facility, Cork (CRF-C) and the helpful comments of Dr Darren Dahly, principal statistician of the CRF-C. The authors certify that they comply with the ethical guidelines for authorship and publishing of the Journal of Cachexia, Sarcopenia and Muscle.⁵⁴

This publication has emanated from research conducted with the financial support of Science Foundation Ireland (SFI) under grant number SFI/12/RC/2273.

Online supplementary material

Additional Supporting Information may be found online in the supporting information tab for this article.

Table S1: Prevalence of patients receiving different chemotherapy regimens according to cancer type.

Figure S1: Prevalence of cachexia, sarcopenia and low muscle attenuation by primary tumour location

Conflict of interest

None declared.

References

1. Sant M, Allemani C, Santaquilanib M, et al. EURO-CARE-4. Survival of cancer patients diagnosed in 1995–1999. Results and commentary. *Eur J Cancer* 2009;**45**:931–991.
2. Bozzetti F, Group SW. Screening the nutritional status in oncology: a preliminary report on 1,000 outpatients. *Support Care Cancer* 2009;**17**:279–284.
3. Pressoir M, Desné S, Berchery D, Rossignol G, Poiree B, Meslier M, et al. Prevalence, risk factors and clinical implications of malnutrition in French Comprehensive Cancer Centres. *Br J Cancer* 2010;**102**:966–971.
4. Dewys WD, Begg C, Lavin PT, Band PR, Bennett JM, Bertino JR, et al. Prognostic effect of weight loss prior to chemotherapy in cancer patients. Eastern Cooperative Oncology Group. *Am J Med* 1980;**69**:491–497.
5. Fearon K, Strasser F, Anker SD, Bosaeus I, Bruera E, Fainsinger RL, et al. Definition and classification of cancer cachexia: an international consensus. *Lancet Oncol* 2011;**12**:489–495.
6. Awad S, Tan BH, Cui H, Bhalla A, Fearon KC, Parsons SL, et al. Marked changes in body composition following neoadjuvant chemotherapy for oesophagogastric cancer. *Clin Nutr* 2012;**31**:74–77.
7. Tan BH, Brammer K, Randhawa N, Welch NT, Parsons SL, James EJ, et al. Sarcopenia is associated with toxicity in patients undergoing neo-adjuvant chemotherapy for oesophago-gastric cancer. *Eur J Surg Oncol* 2015;**41**:333–338.
8. Rollins KE, Tewari N, Ackner A, Awwad A, Madhusudan S, Macdonald IA, et al. The impact of sarcopenia and myosteatosis on outcomes of unresectable pancreatic cancer or distal cholangiocarcinoma. *Clin Nutr* 2015;**35**:1103–1109.
9. Dalal S, Hui D, Bidaut L, Lem K, Del Fabbro E, Crane C, et al. Relationships among body mass index, longitudinal body composition alterations, and survival in patients with locally advanced pancreatic cancer receiving chemoradiation: a pilot study. *J Pain Symptom Manag* 2012;**44**:181–191.
10. Prado CM, Lieffers JR, McCargar LJ, Reiman T, Sawyer MB, Martin L, et al. Prevalence

- and clinical implications of sarcopenic obesity in patients with solid tumours of the respiratory and gastrointestinal tracts: a population-based study. *Lancet Oncol* 2008;**9**:629–635.
11. Joglekar S, Asghar A, Mott SL, Johnson BE, Button AM, Clark E, et al. Sarcopenia is an independent predictor of complications following pancreatectomy for adenocarcinoma. *J Surg Oncol* 2015;**111**:771–775.
 12. Lieffers JR, Bathe OF, Fassbender K, Winget M, Baracos VE. Sarcopenia is associated with postoperative infection and delayed recovery from colorectal cancer resection surgery. *Br J Cancer* 2012;**107**:931–936.
 13. Peng PD, van Vledder MG, Tsai S, de Jong MC, Makary M, Ng J, et al. Sarcopenia negatively impacts short-term outcomes in patients undergoing hepatic resection for colorectal liver metastasis. *HPB (Oxford)* 2011;**13**:439–446.
 14. Anandavadevelan P, Brismar TB, Nilsson M, Johar AM, Martin L. Sarcopenic obesity: a probable risk factor for dose limiting toxicity during neo-adjuvant chemotherapy in oesophageal cancer patients. *Clin Nutr* 2016;**35**:724–730.
 15. Martin L, Birdsell L, Macdonald N, Reiman T, Clandinin MT, McCargar LJ, et al. Cancer cachexia in the age of obesity: skeletal muscle depletion is a powerful prognostic factor, independent of body mass index. *J Clin Oncol* 2013;**31**:1539–1547.
 16. Yip C, Goh V, Davies A, Gossage J, Mitchell-Hay R, Hynes O, et al. Assessment of sarcopenia and changes in body composition after neoadjuvant chemotherapy and associations with clinical outcomes in oesophageal cancer. *Eur Radiol* 2014;**24**:998–1005.
 17. Aubrey J, Esfandiari N, Baracos VE, Buteau FA, Frenette J, Putman CT, et al. Measurement of skeletal muscle radiation attenuation and basis of its biological variation. *Acta Physiol (Oxf)* 2014;**210**:489–497.
 18. Sjøblom B, Grønberg BH, Wentzel-Larsen T, Baracos VE, Hjerstad MJ, Aass N, et al. Skeletal muscle radiodensity is prognostic for survival in patients with advanced non-small cell lung cancer. *Clin Nutr* 2016;**35**:1386–1393.
 19. Hayashi N, Ando Y, Gyawali B, Shimokata T, Maeda O, Fukaya M, et al. Low skeletal muscle density is associated with poor survival in patients who receive chemotherapy for metastatic gastric cancer. *Oncol Rep* 2016;**35**:1727–1731.
 20. Antoun S, Lanoy E, Iacovelli R, Albiges-Sauvin L, Loriot Y, Merad-Taoufik M, et al. Skeletal muscle density predicts prognosis in patients with metastatic renal cell carcinoma treated with targeted therapies. *Cancer* 2013;**119**:3377–3384.
 21. Blauwhoff-Buskermolen S, Versteeg KS, de van der Schueren MA, den Braver NR, Berkhof J, Langius JA, et al. Loss of muscle mass during chemotherapy is predictive for poor survival of patients with metastatic colorectal cancer. *J Clin Oncol* 2016;**34**:1339–1344.
 22. Di Sebastiano KM, Yang L, Zbuk K, Wong RK, Chow T, Koff D, et al. Accelerated muscle and adipose tissue loss may predict survival in pancreatic cancer patients: the relationship with diabetes and anaemia. *Br J Nutr* 2013;**109**:302–312.
 23. Fogelman DR, Holmes H, Mohammed K, Katz MH, Prado CM, Lieffers J, et al. Does IGFR1 inhibition result in increased muscle mass loss in patients undergoing treatment for pancreatic cancer? *J Cachexia Sarcopenia Muscle* 2014;**5**:307–313.
 24. Stene GB, Helbostad JL, Amundsen T, Sørhaug S, Hjelde H, Kaasa S, et al. Changes in skeletal muscle mass during palliative chemotherapy in patients with advanced lung cancer. *Acta Oncol* 2014;**54**:340–348.
 25. Tan BH, Birdsell LA, Martin L, Baracos VE, Fearon KC. Sarcopenia in an overweight or obese patient is an adverse prognostic factor in pancreatic cancer. *Clin Cancer Res* 2009;**15**:6973–6979.
 26. Miyamoto Y, Baba Y, Sakamoto Y, Ohuchi M, Tokunaga R, Kurashige J, et al. Negative impact of skeletal muscle loss after systemic chemotherapy in patients with unresectable colorectal cancer. *PLoS One* 2015;**10**:e0129742.
 27. Prado CM, Sawyer MB, Ghosh S, Lieffers JR, Esfandiari N, Antoun S, et al. Central tenet of cancer cachexia therapy: do patients with advanced cancer have exploitable anabolic potential? *Am J Clin Nutr* 2013;**98**:1012–1019.
 28. Rutten IJ, van Dijk DP, Kruitwagen RF, Beets-Tan RG, Olde Damink SW, van Gorp T. Loss of skeletal muscle during neoadjuvant chemotherapy is related to decreased survival in ovarian cancer patients. *J Cachexia Sarcopenia Muscle* 2016;**7**:458–466.
 29. Heymsfield SB, Wang Z, Baumgartner RN, Ross R. Human body composition: advances in models and methods. *Annu Rev Nutr* 1997;**17**:527–558.
 30. Mitsiopoulos N, Baumgartner RN, Heymsfield SB, Lyons W, Gallagher D, Ross R. Cadaver validation of skeletal muscle measurement by magnetic resonance imaging and computerized tomography. *J Appl Physiol (1985)* 1998;**85**:115–122.
 31. Mourtzakis M, Prado CM, Lieffers JR, Reiman T, McCargar LJ, Baracos VE. A practical and precise approach to quantification of body composition in cancer patients using computed tomography images acquired during routine care. *Appl Physiol Nutr Metab* 2008;**33**:997–1006.
 32. Shen W, Punyanitya M, Wang Z, Gallagher D, St-Onge MP, Albu J, et al. Total body skeletal muscle and adipose tissue volumes: estimation from a single abdominal cross-sectional image. *J Appl Physiol (1985)* 2004;**97**:2333–2338.
 33. Frontera WR, Meredith CN, O'Reilly KP, Knuttgen HG, Evans WJ. Strength conditioning in older men: skeletal muscle hypertrophy and improved function. *J Appl Physiol (1985)* 1988;**64**:1038–1044.
 34. Prado CM, Bekaii-Saab T, Doyle LA, Shrestha S, Ghosh S, Baracos VE, et al. Skeletal muscle anabolism is a side effect of therapy with the MEK inhibitor: selumetinib in patients with cholangiocarcinoma. *Br J Cancer* 2012;**106**:1583–1586.
 35. Wesseltoft-Rao N, Hjerstad MJ, Ik Dahl T, Dajani O, Ulven SM, Iversen PO, et al. Comparing two classifications of cancer cachexia and their association with survival in patients with unresected pancreatic cancer. *Nutr Cancer* 2015;**67**:472–480.
 36. Frontera WR, Hughes VA, Fielding RA, Fiatarone MA, Evans WJ, Roubenoff R. Aging of skeletal muscle: a 12-yr longitudinal study. *J Appl Physiol (1985)* 2000;**88**:1321–1326.
 37. Goodpaster BH, Park SW, Harris TB, Kritchevsky SB, Nevitt M, Schwartz AV, et al. The loss of skeletal muscle strength, mass, and quality in older adults: the health, aging and body composition study. *J Gerontol A Biol Sci Med Sci* 2006;**61**:1059–1064.
 38. Daly LE, Power DG, O'Reilly Á, Donnellan P, Cushen SJ, O'Sullivan K, et al. The impact of body composition parameters on ipilimumab toxicity and survival in patients with metastatic melanoma. *Br J Cancer* 2017;**116**:310–317.
 39. Palmela C, Velho S, Agostinho L, Branco F, Santos M, Santos MP, et al. Body composition as a prognostic factor of neoadjuvant chemotherapy toxicity and outcome in patients with locally advanced gastric cancer. *J Gastric Cancer* 2017;**17**:74–87.
 40. Miyamoto Y, Baba Y, Sakamoto Y, Ohuchi M, Tokunaga R, Kurashige J, et al. Sarcopenia is a negative prognostic factor after curative resection of colorectal cancer. *Ann Surg Oncol* 2015;**22**:2663–2668.
 41. Black D, Mackay C, Ramsay G, Hamoodi Z, Nanthakumaran S, Park KG, et al. Prognostic value of computed tomography: measured parameters of body composition in primary operable gastrointestinal cancers. *Ann Surg Oncol* 2017;**24**:2241–2251.
 42. Shachar SS, Williams GR, Muss HB, Nishijima TF. Prognostic value of sarcopenia in adults with solid tumours: a meta-analysis and systematic review. *Eur J Cancer* 2016;**57**:58–67.
 43. Sharma P, Zargar-Shoshtari K, Caracciolo JT, Fishman M, Poch MA, Pow-Sang J, et al. Sarcopenia as a predictor of overall survival after cytoreductive nephrectomy for metastatic renal cell carcinoma. *Urol Oncol* 2015;**33**:339.e17–339.e23.
 44. Fukushima H, Yokoyama M, Nakanishi Y, Tobisu K, Koga F. Sarcopenia as a prognostic biomarker of advanced urothelial carcinoma. *PLoS One* 2015;**10**:e0115895.
 45. Donohoe CL, Ryan AM, Reynolds JV. Cancer cachexia: mechanisms and clinical implications. *Gastroenterol Res Pract* 2011. <https://doi.org/10.1155/2011/601434>.
 46. Moses AW, Slater C, Preston T, Barber MD, Fearon KC. Reduced total energy expenditure and physical activity in cachectic patients with pancreatic cancer can be modulated by an energy and protein dense oral supplement enriched with n-3 fatty acids. *Br J Cancer* 2004;**90**:996–1002.
 47. Antoun S, Birdsell L, Sawyer MB, Venner P, Escudier B, Baracos VE. Association of skeletal muscle wasting with treatment with sorafenib in patients with advanced renal cell carcinoma: results from a placebo-

- controlled study. *J Clin Oncol* 2010;**28**:1054–1060.
48. Temel JS, Abernethy AP, Curott DC, Friend J, Duus EM, Yan Y, et al. Anamorelin in patients with non-small-cell lung cancer and cachexia (ROMANA 1 and ROMANA 2): results from two randomised, double-blind, phase 3 trials. *Lancet Oncol* 2016;**17**:519–531.
49. Dobs AS, Boccia RV, Croot CC, Gabrail NY, Dalton JT, Hancock ML, et al. Effects of enobosarm on muscle wasting and physical function in patients with cancer: a double-blind, randomised controlled phase 2 trial. *Lancet Oncol* 2013;**14**:335–345.
50. Fearon KC. Cancer cachexia: developing multimodal therapy for a multidimensional problem. *Eur J Cancer* 2008;**44**:1124–1132.
51. Solheim TS, Laird BJ. Evidence base for multimodal therapy in cachexia. *Curr Opin Support Palliat Care* 2012;**6**:424–431.
52. Solheim TS, Laird BJA, Balstad TR, Stene GB, Bye A, Johns N, et al. A randomized phase II feasibility trial of a multimodal intervention for the management of cachexia in lung and pancreatic cancer. *J Cachexia Sarcopenia Muscle* 2017 doi <https://doi.org/10.1002/jcsm.12201> [Epub ahead of print].
53. Roeland EJ, Ma JD, Nelson SH, Seibert T, Heavey S, Revta C, et al. Weight loss versus muscle loss: re-evaluating inclusion criteria for future cancer cachexia interventional trials. *Support Care Cancer* 2017;**25**:365–369.
54. von Haehling S, Morley JE, Coats AJ, Anker SD. Ethical guidelines for publishing in the Journal of Cachexia, Sarcopenia and Muscle: update 2015. *J Cachexia Sarcopenia Muscle* 2015;**6**:315–316.