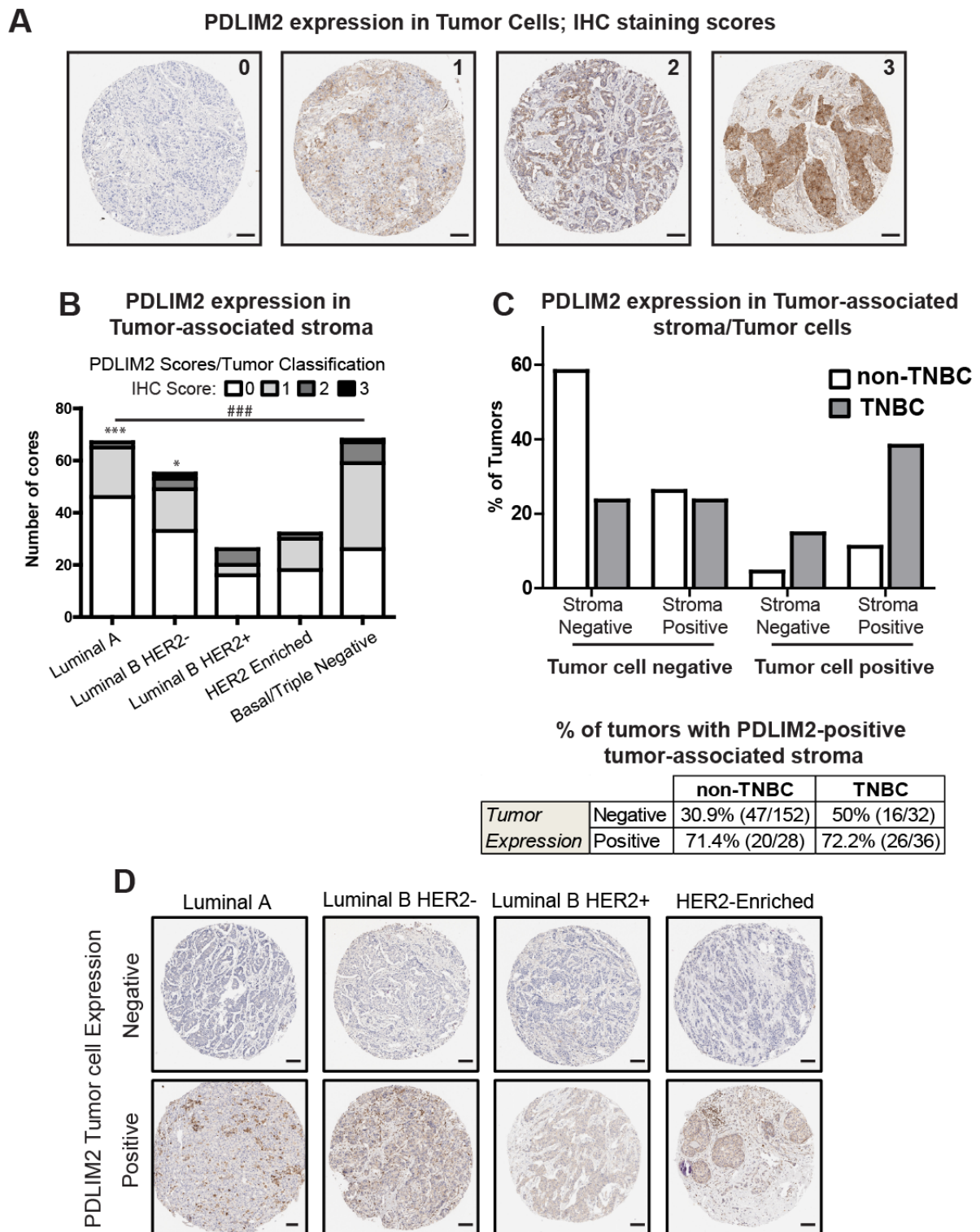


**UCC Library and UCC researchers have made this item openly available.  
Please [let us know](#) how this has helped you. Thanks!**

<b>Title</b>	PDLIM2 is a marker of adhesion and $\beta$ -catenin activity in triple-negative breast cancer
<b>Author(s)</b>	Cox, Orla T.; Edmunds, Shelley J.; Simon-Keller, Katja; Li, Bo; Moran, Bruce; Buckley, Niamh E.; Bustamante- Garrido, Milán F.; Healy, Nollaig; O'Flanagan, Ciara H.; Gallagher, William M.; Kennedy, Richard D.; Bernards, René; Caldas, Carlos; Chin, Suet-Feung; Marx, Alexander; O'Connor, Rosemary
<b>Publication date</b>	2019-03-18
<b>Original citation</b>	Cox, O. T., Edmunds, S. J., Simon-Keller, K., Li, B., Moran, B., Buckley, N. E., Bustamante-Garrido, M., Healy, N., O'Flanagan, C. H., Gallagher, W. M., Kennedy, R. D., Bernards, R., Caldas, C., Chin, S.-F., Marx, A. and O'Connor, R. (2019) 'PDLIM2 is a marker of adhesion and $\beta$ -catenin activity in triple-negative breast cancer', <i>Cancer Research</i> , 79(10), pp. 2619-2633. doi: 10.1158/0008-5472.CAN-18-2787
<b>Type of publication</b>	Article (peer-reviewed)
<b>Link to publisher's version</b>	<a href="http://cancerres.aacrjournals.org/content/79/10/2619">http://cancerres.aacrjournals.org/content/79/10/2619</a> <a href="http://dx.doi.org/10.1158/0008-5472.CAN-18-2787">http://dx.doi.org/10.1158/0008-5472.CAN-18-2787</a> Access to the full text of the published version may require a subscription.
<b>Rights</b>	© 2019, American Association for Cancer Research. All rights reserved.
<b>Embargo information</b>	Access to this article is restricted until 12 months after publication by request of the publisher.
<b>Embargo lift date</b>	2020-03-18
<b>Item downloaded from</b>	<a href="http://hdl.handle.net/10468/8050">http://hdl.handle.net/10468/8050</a>

Downloaded on 2021-09-28T23:37:02Z

Supplementary Figure 1, related to Figure 1



Supplementary Figure 1, related to Figure 1:

**A:** Representative micrographs of PDLIM2 expression in TNBC cells from the Northern Ireland Biobank (NIB) Breast Cancer TMA, illustrating staining intensity and weighted scores; Negative (0), Low (1), Moderate (2) or High (3). **B:** Graph showing sample numbers

for each PDLIM2 staining score from IHC analysis of PDLIM2 expression in NIB TMA cohort for stromal cell expression. **C:** Quantification of PDLIM2 tumor and stromal cell expression expressed as percentage of total of non-TNBC or TNBC samples within the NIB cohort. Table shows data for PDLIM2-negative or -positive tumors which have PDLIM2-positive stroma, the actual counts out of totals are shown in brackets. **D:** Representative micrographs of negative and positive PDLIM2 staining in non-TNBC tumors from the NIB TMA. Scalebars represent 100 $\mu$ m.