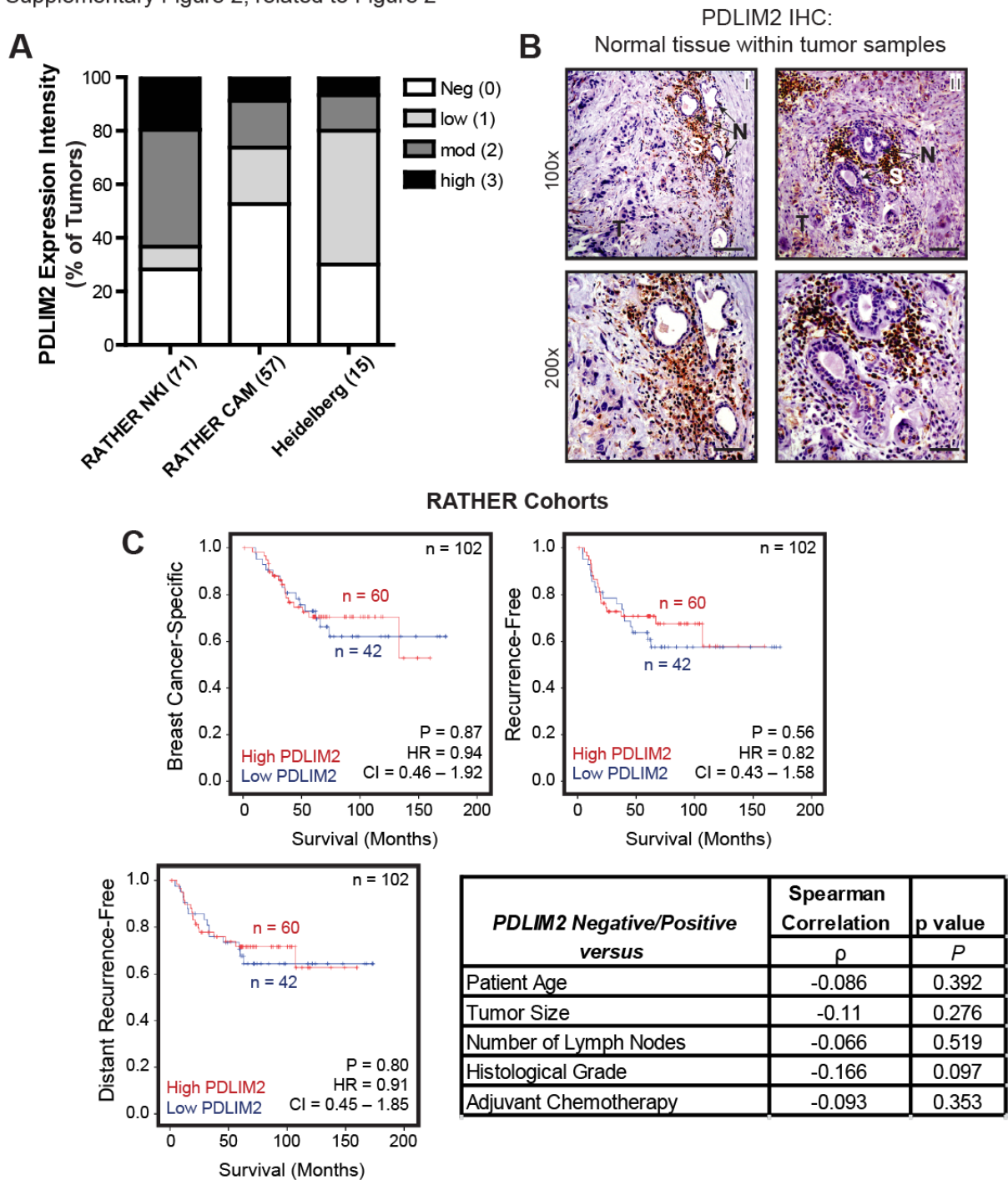


**UCC Library and UCC researchers have made this item openly available.
 Please [let us know](#) how this has helped you. Thanks!**

| | |
|------------------------------------|--|
| Title | PDLIM2 is a marker of adhesion and β -catenin activity in triple-negative breast cancer |
| Author(s) | Cox, Orla T.; Edmunds, Shelley J.; Simon-Keller, Katja; Li, Bo; Moran, Bruce; Buckley, Niamh E.; Bustamante- Garrido, Milán F.; Healy, Nollaig; O'Flanagan, Ciara H.; Gallagher, William M.; Kennedy, Richard D.; Bernards, René; Caldas, Carlos; Chin, Suet-Feung; Marx, Alexander; O'Connor, Rosemary |
| Publication date | 2019-03-18 |
| Original citation | Cox, O. T., Edmunds, S. J., Simon-Keller, K., Li, B., Moran, B., Buckley, N. E., Bustamante-Garrido, M., Healy, N., O'Flanagan, C. H., Gallagher, W. M., Kennedy, R. D., Bernards, R., Caldas, C., Chin, S.-F., Marx, A. and O'Connor, R. (2019) 'PDLIM2 is a marker of adhesion and β -catenin activity in triple-negative breast cancer', <i>Cancer Research</i> , 79(10), pp. 2619-2633. doi: 10.1158/0008-5472.CAN-18-2787 |
| Type of publication | Article (peer-reviewed) |
| Link to publisher's version | http://cancerres.aacrjournals.org/content/79/10/2619 http://dx.doi.org/10.1158/0008-5472.CAN-18-2787 Access to the full text of the published version may require a subscription. |
| Rights | © 2019, American Association for Cancer Research. All rights reserved. |
| Embargo information | Access to this article is restricted until 12 months after publication by request of the publisher. |
| Embargo lift date | 2020-03-18 |
| Item downloaded from | http://hdl.handle.net/10468/8050 |

Downloaded on 2021-09-28T22:15:44Z

Supplementary Figure 2, related to Figure 2



Supplementary Figure 2, related to Figure 2:

A: PDLIM2 expression shown by weighted score of IHC staining presented as percentage of tumors within each TNBC subtype in RATHER (NKI, CAM) and Heidelberg cohorts. **B:** Representative micrographs of IHC staining for PDLIM2 in regions of non-tumor tissue (N) within tumors (T) from the Heidelberg cohort, highlighting lack of immuno-reactivity of normal cells (N) compared with PDLIM2-positive Stroma (S). Images are from a PDLIM2-negative tumor (i) and a PDLIM2-positive tumor (ii). Scalebars are 100µm (100x) and 50µm

(200x). **C:** Statistical evaluation of PDLIM2 expression (negative/positive) correlation with clinico-pathological parameters from patient data available for the RATHER cohorts; Kaplan Meier survival curves showing the relationship between PDLIM2 expression and breast cancer-specific survival, recurrence-free survival and distant recurrence-free survival in the RATHER cohorts (n=102). The correlations between negative/positive expression of PDLIM2 and clinicopathologic variables were evaluated using the Spearman's rank correlation coefficient method. A two-tailed test with p value < 0.05 is considered to be significant.