

**UCC Library and UCC researchers have made this item openly available.
Please [let us know](#) how this has helped you. Thanks!**

Title	Relatedness between the two-component lantibiotics lacticin 3147 and staphylococcin C55 based on structure, genetics and biological activity
Author(s)	O'Connor, Eileen B.; Cotter, Paul D.; O'Connor, Paula M.; O'Sullivan, Orla; Tagg, John R.; Ross, R. Paul; Hill, Colin
Publication date	2007-04-02
Original citation	O'Connor, E. and Cotter, P. and O'Connor, P. and O'Sullivan, O. and Tagg, J. and Ross, R.P. and Hill, C. (2007) 'Relatedness between the two-component lantibiotics lacticin 3147 and staphylococcin C55 based on structure, genetics and biological activity'. BMC microbiology, 7 (24). doi: 10.1186/1471-2180-7-24
Type of publication	Article (peer-reviewed)
Link to publisher's version	http://www.biomedcentral.com/1471-2180/7/24 http://dx.doi.org/10.1186/1471-2180-7-24 Access to the full text of the published version may require a subscription.
Rights	© 2007 O'Connor et al; licensee BioMed Central Ltd. This is an Open Access article distributed under the terms of the Creative Commons Attribution License (http://creativecommons.org/licenses/by/2.0/), which permits unrestricted use, distribution, and reproduction in any medium, provided the original work is properly cited. http://creativecommons.org/licenses/by/2.0/
Item downloaded from	http://hdl.handle.net/10468/841

Downloaded on 2020-10-25T22:58:27Z

Research article

Open Access

Relatedness between the two-component lantibiotics lacticin 3147 and staphylococcin C55 based on structure, genetics and biological activity

Eileen B O'Connor^{1,2,3}, Paul D Cotter², Paula O'Connor¹, Orla O'Sullivan¹, John R Tagg⁴, R Paul Ross*^{1,3} and Colin Hill^{2,3}

Address: ¹Moorepark Food Research Centre, Teagasc, Fermoy, Co. Cork, Ireland, ²Department of Microbiology, National University of Ireland, Cork, Ireland, ³Alimentary Pharmabiotic Centre, Cork, Ireland and ⁴Department of Microbiology, University of Otago, Dunedin, New Zealand

Email: Eileen B O'Connor - eileen.oconnor@teagasc.ie; Paul D Cotter - P.cotter@ucc.ie; Paula O'Connor - paula.oconnor@teagasc.ie; Orla O'Sullivan - orla.osullivan@teagasc.ie; John R Tagg - john.tagg@stonebow.otago.ac.nz; R Paul Ross* - paul.ross@teagasc.ie; Colin Hill - c.hill@ucc.ie

* Corresponding author

Published: 2 April 2007

Received: 17 November 2006

BMC Microbiology 2007, 7:24 doi:10.1186/1471-2180-7-24

Accepted: 2 April 2007

This article is available from: <http://www.biomedcentral.com/1471-2180/7/24>

© 2007 O'Connor et al; licensee BioMed Central Ltd.

This is an Open Access article distributed under the terms of the Creative Commons Attribution License (<http://creativecommons.org/licenses/by/2.0>), which permits unrestricted use, distribution, and reproduction in any medium, provided the original work is properly cited.

Abstract

Background: Two component lantibiotics, such as the plasmid-encoded lacticin 3147 produced by *Lactococcus lactis* DPC3147 and staphylococcin C55 produced by *Staphylococcus aureus* C55, represent an emerging subgroup of bacteriocins. These two bacteriocins are particularly closely related, exhibiting 86% (LtnA1 and C55 α) and 55% (LtnA2 and C55 β) identity in their component peptides. The aim of this study was to investigate, for the first time for any two component bacteriocins, the significance of the relatedness between these two systems.

Results: So close is this relatedness that the hybrid peptide pairs LtnA1:C55 β and C55 α :LtnA2 were found to have activities in the single nanomolar range, comparing well with the native pairings. To determine whether this flexibility extended to the associated post-translational modification/processing machinery, the staphylococcin C55 structural genes were directly substituted for their lacticin 3147 counterparts in the *ltn* operon on the large conjugative lactococcal plasmid pMRC01. It was established that the lacticin LtnA1 post-translational and processing machinery could produce functionally active C55 α , but not C55 β . In order to investigate in closer detail the significance of the differences between LtnA1 and C55 α , three residues in LtnA1 were replaced with the equivalent residues in C55 α . Surprisingly, one such mutant LtnA1-Leu21Ala was not produced. This may be significant given the positioning of this residue in a putative lipid II binding loop.

Conclusion: It is apparent, despite sharing striking similarities in terms of structure and activity, that these two complex bacteriocins display some highly dedicated features particular to either system.

Background

Lantibiotics are gene-encoded, ribosomally-synthesized antimicrobial peptides which are distinguishable by the presence of unusual amino acids including lanthionine (Lan), β -methyl-lanthionine (meLan) and a number of dehydrated amino acids (for comprehensive reviews see [1-4]). These unusual amino acids are formed as a result of post-translational modifications of precursor peptides; for example, serine and threonine residues are enzymatically dehydrated to give dehydroalanine and dehydrobutyrine, respectively. A cysteine residue can then react with one of the newly formed unsaturated sites in what is essentially a 1,4-Michael addition reaction to form the characteristic thioether amino acids Lan and meLan. Lantibiotics are synthesized as precursor peptides containing N terminal extensions or leader peptides which are removed during export through a dedicated bacteriocin transport system leading to the active mature peptide.

Lantibiotics are currently classified into eleven subgroups based on alignments of the unmodified structural peptides (for the most recent classification scheme see [4]). Two of these groups contain the individual components of a number of two component lantibiotics i.e. those lantibiotics which display enhanced bactericidal effects due to the complementary activity of two peptides. To date, seven two component lantibiotics have been identified and include lactacin 3147 [5], staphylococcin C55 [6], plantaricin W [7], cytolysin [8], haloduracin [9], Smb [10] and BHT-A [11]. Of these, cytolysin is clearly the most distant relative based on homologies and biological activity, while lactacin 3147 and staphylococcin C55 peptides are particularly closely related. Staphylococcin C55 is produced by *Staphylococcus aureus* C55, the adopted prototype of phage II bacteriocin producers (7) and indeed, is widely produced by this group of *S. aureus* strains [12]. Its genetic determinants are located on a 32 kb plasmid in the strain *S. aureus* C55 [6] but have also been identified on a 37 kb plasmid in *S. aureus* U0007 (Warren *et al.*, 1975) and on a 38 kb pETB plasmid from the clinical isolate *S. aureus* TY4 [13]. Interestingly, in all cases, the bacteriocin structural genes are closely associated with an exfoliative toxin B determinant, an exotoxin associated with skin infections in humans [14]. The structural peptides, staphylococcin C55 α and C55 β of molecular masses 3339 and 2993, respectively, are both required in equimolar amounts to act synergistically to give an antimicrobial effect against *S. aureus*, *Micrococcus luteus* but not *S. epidermidis* strains [6]. Mode of action studies indicated that cell death was due to pore formation in the cytoplasmic membrane and widespread inhibition of macromolecular biosynthesis following exposure to the partially purified material (Dajani *et al.*, 1973).

In contrast, lactacin 3147 is produced by a food-grade *L. lactis* subsp. *lactis* DPC3147 strain and encoded on a 60.2 kb conjugative plasmid pMRC01 which encodes the genetic determinants for production and immunity [15]. The two structural peptides of lactacin 3147 are LtnA1 and LtnA2 with molecular masses of 3306 and 2847, respectively. The optimal ratio of the two lactacin peptides has recently been established, suggesting a peptide stoichiometry of 1:1, effective at nanomolar concentrations (7 nM) [16]. Lactacin LtnA1 does exhibit independent inhibitory activity which is greatly enhanced by the presence of the LtnA2 peptide. Sequential addition studies show that the LtnA1 peptide must be added before LtnA2 to observe inhibitory activity [16]. This activity, which occurs at nanomolar concentrations for the lactacin peptides, suggests the involvement of a docking molecule speculated to be lipid II as is the case with nisin [17]. In addition, lipid II has been identified as the target molecule for a number of other antimicrobial peptides including mersacidin and actagardin [18-20]. Interestingly, the 3D structure of lactacin 3147 has recently been elucidated [21] and reveals a specific lanthionine-bridging pattern in LtnA1 closely resembling that of the lipid II-binding globular lantibiotic mersacidin which acts by inhibition of cell wall biosynthesis. In contrast, the LtnA2 peptide has a more elongated linear structure potentially capable of pore formation. It is speculated that the lactacin peptides display a dual mode of action similar to nisin, however in the case of lactacin 3147 both functions are assigned to separate peptides [16]. In essence, it is predicted that LtnA1 binds to lipid II in a similar way to mersacidin, thereby inhibiting cell wall biosynthesis through the prevention of transglycosylation. The second function of pore formation and rapid efflux of K⁺ and phosphate ions [22] is assigned to the linear more hydrophobic peptide LtnA2. Weidemann *et al.* [43] recently provided some experimental evidence that agreed with this speculation.

The focus of this communication was to investigate the similarities and differences between lactacin 3147 and staphylococcin C55. Primary sequence analysis of the pre-peptides suggests that lactacin A1 and staphylococcin C55 α resemble natural variants with a difference of only 4 amino acids between the two peptides, while the complementary peptides share less identity (55%). We demonstrate that purified peptides of the two bacteriocins can cross complement with negligible losses in activity, and that the post translational machinery of LtnA1 can produce a viable C55 α peptide. Furthermore substitution of leucine 21 of LtnA1, located within a proposed lipid II binding pocket, for the corresponding alanine residue in C55 α counterpart, was not produced.

Results and Discussion

Bioinformatic analysis

Lactacin 3147 and staphylococcin C55 are closely related two component lantibiotics. LtnA1 and C55 α share 86% identity with a difference of only 4 amino acids in the unmodified propeptide whereas LtnA2 and C55 β share less identity (55%) with highest homology spanning a 16 amino acid region at the C terminal end of the propeptides (Fig. 1). Thus, it is not surprising that the predicted structure of C55 α very closely resembles that which has been established for LtnA1 (Fig. 1) [21]. In addition to the structural peptides the proposed modification and transport proteins exhibit significant homology. For example, the lactacin modification peptides lactacin LtnM1 and LtnM2 share 44.7% and 40.7% identity to their staphylococcal counterparts SacM1 and SacM2, respectively. In addition, the transport peptides lactacin LtnT and staphylococcal SacT are 48.9% identical, while lactacin LtnJ and staphylococcal SacJ (C55 orf45) share 47% identity. A clustal W alignment demonstrating the evolutionary divergence across the structural peptides of lactacin 3147 and staphylococcin C55 indicated that the number of substitution events between LtnA1 and C55 α was considerably lower at 14.7 in comparison to 67 for LtnA2 and C55 β (Fig. 1). In contrast, investigation of the evolutionary divergence between the modification peptides LtnM1 with SacM1 and LtnM2 with SacM2 indicated values of 93.8 and 104.5, respectively, while the transport peptides were slightly more conserved with a value of 81.6 for LtnT and SacT. These results indicate that the lanthionine containing peptides LtnA1 and C55 α had a slow rate of divergence relative to the biosynthesis machinery and are highly conserved. Indeed, the amino acid identity and evolutionary divergence across both two component lantibiotics is indicative of a common ancestor.

Purified preparation of staphylococcin C55 displays a broad spectrum of inhibition analogous to lactacin 3147

Initially, the range of inhibitory activity of *L. lactis* DPC3147 and *S. aureus* C55 against a number of indicator strains was examined (Table 1). The strain *S. aureus* C55 inhibited *L. lactis* strains and *M. luteus* but failed to inhibit *Enterococcus*, mastitic *S. aureus*, *Listeria*, *Bacillus*, *Leuconostoc*, *Pediococcus* or *Escherichia coli*. However, all of these strains with the exception of *Pediococcus* and the Gram-negative *E. coli* strain were inhibited by a concentrated preparation of the staphylococcin C55 peptides. The *L. lactis* DPC3147 culture inhibited all strains listed with the exception of the *S. aureus* strains and *E. coli*. However, when the concentrated supernatant of lactacin 3147 was assayed it was found to inhibit the full list of Gram-positive indicator strains used (Table 1). Overall, this demonstrates that both bacteriocins are active against a wide range of Gram-positive strains.

Cross complementation between lactacin 3147 and staphylococcin C55 evident at a nanomolar range

The synergistic effect of staphylococcin peptides C55 α and C55 β and the lactacin 3147 peptides LtnA1 and LtnA2 against the indicator strain *L. lactis* HP is clearly shown by the well diffusion assay technique (Fig. 2A and 2B). When the lactacin 3147 and staphylococcin C55 peptides were cross combined, complementation was observed. For instance, when LtnA1 and C55 β were combined, a zone of inhibition against the sensitive indicator strain *L. lactis* HP was evident (Fig. 2C). Indeed, the combination of C55 α and LtnA2 also appeared to exhibit cross synergism to the level of activity presented by both parent strains (Fig. 2D). This cross complementation which was evident between the two strains was further examined by microtitre plate assays using purified preparations of both peptides and is presented as isobolograms (Fig. 2E–H). The MIC₅₀ for the lactacin peptides was in the single-nanomolar range; i.e. 5 nM of LtnA1 titrated against 7 nM of LtnA2 inhibited the growth of the indicator *L. lactis* HP by 50%, as similarly reported by Morgan *et al.*, (2005) (Fig. 2E). Likewise, combinations of staphylococcin C55 peptides also displayed inhibitory activity in the singular nanomolar range (4 nM) at a peptide stoichiometry of 1:1 (Fig. 2F). Similarly, hybrid pairs of the bacteriocins, LtnA1 with C55 β (Fig. 2G) and C55 α with LtnA2 (Fig. 2H), displayed a high specific activity of 4:3 nM and 8:6 nM, respectively. Overall, the level of inhibition across the four combinations was in the nanomolar range.

Effect of swapping structural genes

The *ltnA1* and *ltnA2* genes in the large conjugative plasmid pMRC01 were precisely replaced with the staphylococcin C55 structural genes *sac α A* and *sac β A* using a strategy involving amplification and spliced overlap extension (SOEing) PCR [23] (Fig. 3A). This construct inhibited the indicator strain *L. lactis* HP, albeit the inhibitory activity was significantly reduced (Fig. 3A). The supernatant of mutant A was purified (solid phase extraction) and mass spectrometry analysis revealed that the structural peptide C55 β was not produced whereas a mass corresponding to C55 α was evident. When the purified HPLC fraction putatively containing C55 α was combined with pure peptides of either LtnA2 or C55 β the activity was greatly enhanced. This demonstrated that the modification and transport machinery of lactacin 3147 could modify and export the C55 α peptide resulting in an extracellular mature active peptide. Notably, no complementation effect was seen when HPLC fractions were combined with either LtnA1 or C55 α , supporting the mass spectrometry finding that C55 β was not produced. It was thought possible that heterologous production of C55 α and C55 β could be enhanced through fusion of the corresponding LtnA1 and LtnA2 leaders, respectively, (which are more divergent than the corresponding propeptides) if it aided recogni-

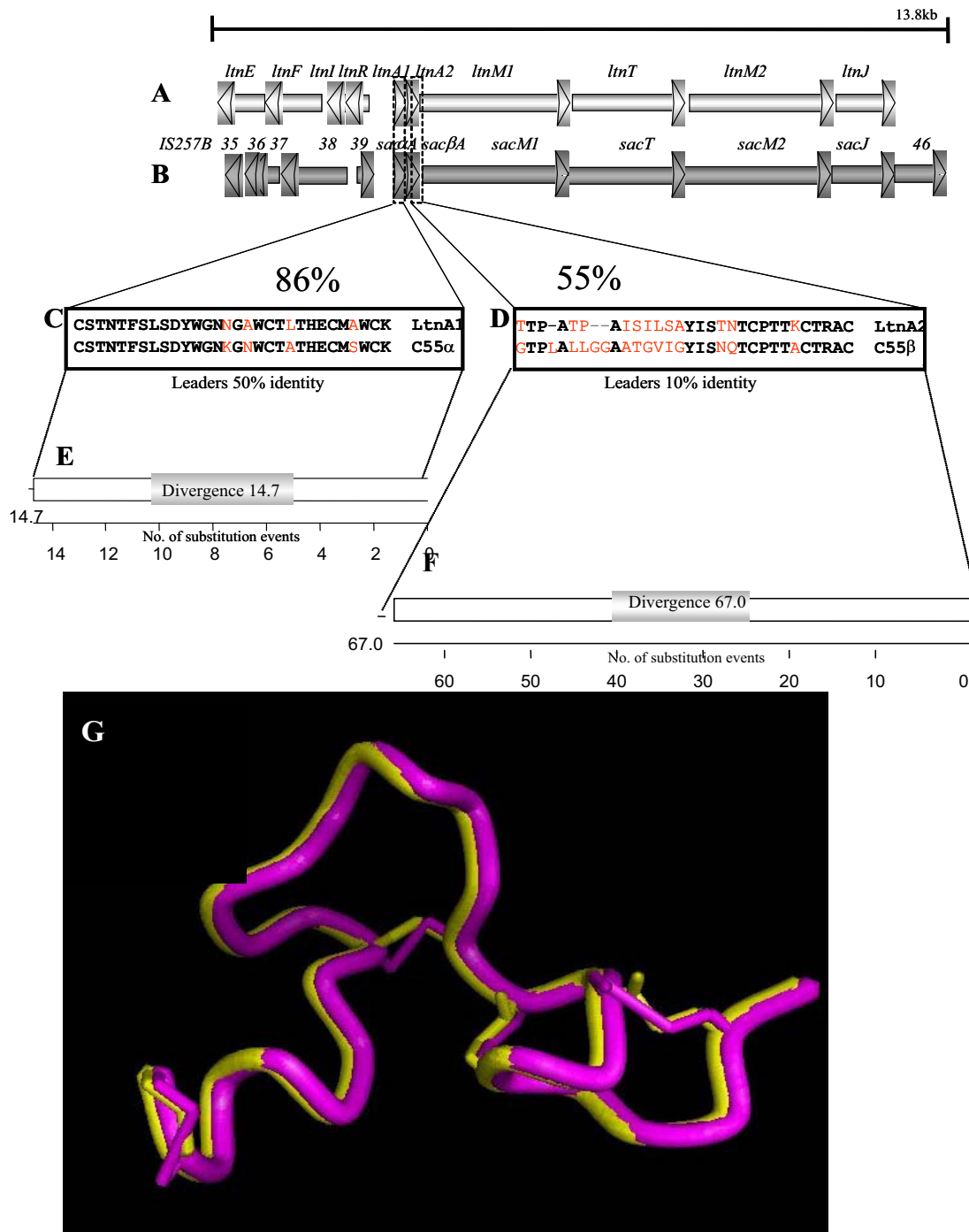


Figure 1

Genetic organisation of the gene clusters of the closely related lantibiotics lactacin 3147 (A) and staphylococcin C55 (B). C depicts a comparison of the amino acid sequence of the propeptide of one of the structural components of lactacin 3147 (LtnA1) and staphylococcin C55 (C55α). D depicts a comparison of the amino acid sequence of the propeptide of one of the structural components of lactacin 3147 (LtnA2) and staphylococcin C55 (C55β). Homologous amino acids are indicated in bold, differences are indicated in red. E and F indicates evolutionary divergence (measured in the number of substitution events) between the unmodified lantibiotic propeptides (E) LtnA1 and C55α and (F) LtnA2 and C55β. (G) Visualization of homology modeling of LtnA1 (gold) and C55α (purple).

Table 1: Inhibitory spectra of (A) *S. aureus* C55 and *L. lactis* DPC3147 culture and (B) *S. aureus* C55 and *L. lactis* DPC3147 supernatant purified from a C18 Varian column.

Strain ^a	A Culture ^b		B Concentrated supernatant ^b	
	<i>S. aureus</i> C55	<i>L. lactis</i> DPC3147	<i>S. aureus</i> C55	<i>L. lactis</i> DPC3147
<i>Enterococcus faecalis</i> DPC1145	NZ	+	+	++
<i>Enterococcus faecalis</i> DPC1143	NZ	+	+	++
<i>Enterococcus faecalis</i> DPC115	NZ	+	+	++
<i>Lactococcus lactis</i> DPC3147	+	NZ	+	+
<i>Lactococcus lactis</i> DPC481	+	++	++	++
<i>Lactococcus lactis</i> DPC497	+	++	++	++
<i>Lactococcus lactis</i> IL1403	+	+++	++	++
<i>Lactococcus lactis cremoris</i> HP	++	+++	++	+++
<i>Lactobacillus gasseri</i> DPC6123	+	++	++	+++
<i>Lactobacillus plantarium</i> DPC6124	NZ	+	+	++
<i>Lactobacillus paracasei</i> DPC6130	NZ	++	++	+++
<i>Staphylococcus aureus</i> C55	NZ	NZ	+	+
<i>Staphylococcus aureus</i> DPC5245	NZ	NZ	+	++
<i>Staphylococcus aureus</i> DPC5246	NZ	NZ	+	++
<i>Listeria monocytogenes</i> L028	NZ	+	+	++
<i>Listeria innocua</i> DPC3306	NZ	++	++	+++
<i>Bacillus subtilis</i>	NZ	+	++	++
<i>Micrococcus luteus</i>	+	++	++	+++
<i>Leuconostoc oenes</i>	NZ	++	++	++
<i>Pediococcus pentasaceus</i> DPC3541	NZ	+	NZ	++
<i>Pediococcus pentasaceus</i> DPC2445	NZ	+	NZ	+
<i>Escherichia coli</i> O157:H7	NZ	NZ	NZ	NZ

a. DPC, Moorepark Food Research Centre, Teagasc, Fermoy, Co. Cork, Ireland.

b. NZ, No zone; +, 1–5 mm; ++, 5–10 mm; +++, 10 mm and over

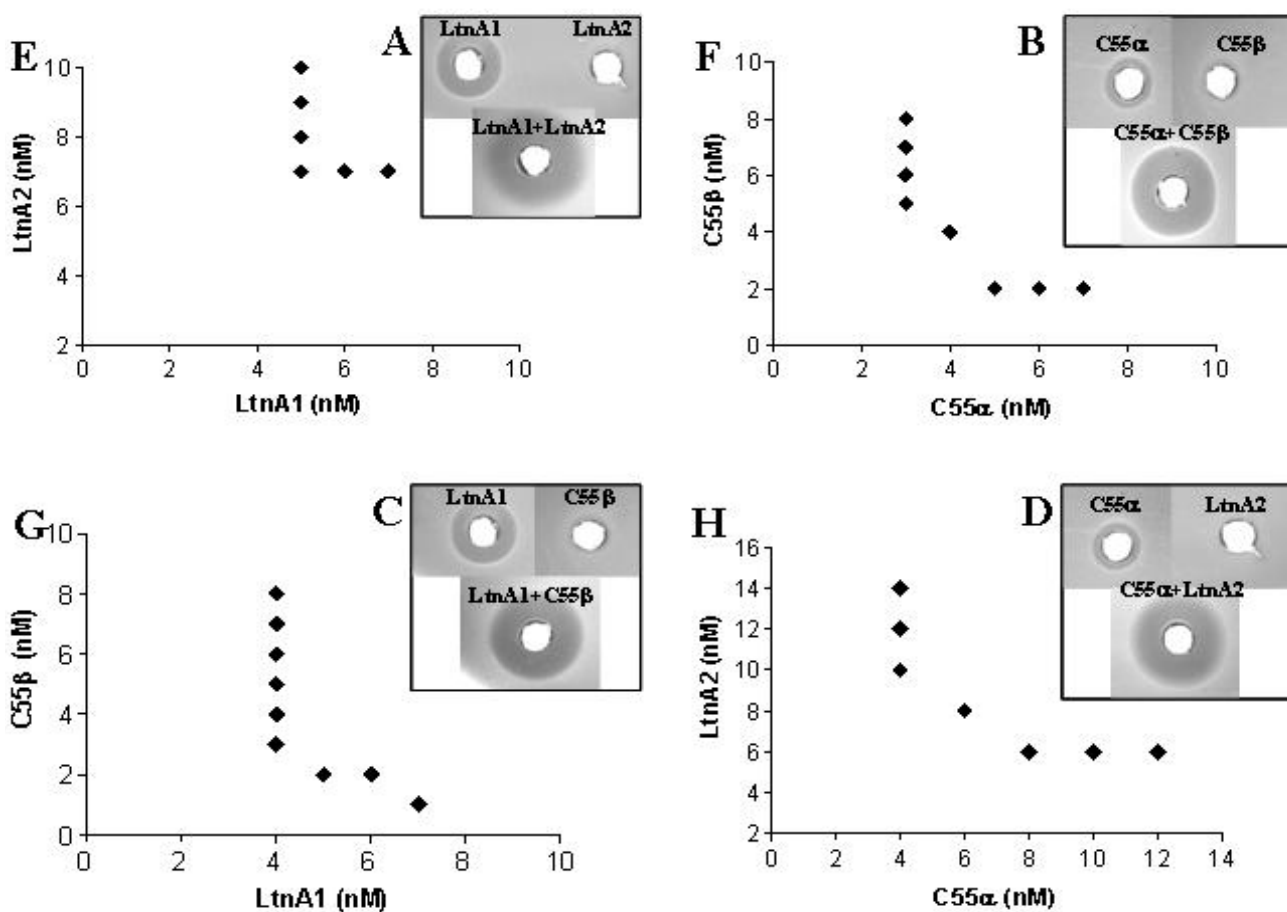
tion of the peptides by the lactacin 3147 biosynthetic machinery.

Thus the leader of LtnA1 was fused by SOEing to the C55 α propeptide segment of the structural gene generating an LtnA1/Sac α hybrid (Fig. 3B) and the leader of LtnA2 was fused to the propeptide segment of the structural gene of C55 β generating an LtnA2/Sac β hybrid (Fig. 3C). Purified preparations (solid phase extraction) from both hybrid bacteriocins produced a zone of inhibition against the indicator strain *L. lactis* HP, however, the activity was significantly reduced with respect to the parent strains. The reduced zone of inhibition was attributed to a concentrated level of one peptide alone, either LtnA2 (Fig. 3B) or LtnA1 (Fig. 3C). Following HPLC purification, neither hybrid peptide could be detected by mass spectrometry analysis. Notably, no complementation effect was seen when HPLC fractions of LtnA1/Sac α hybrid were combined with either LtnA2 or C55 β (Fig. 3B) and similarly no complementation effect was seen when HPLC fractions of LtnA2/Sac β hybrid were combined with either LtnA1 or C55 α , supporting the mass spectrometry finding that the hybrid peptides were not produced. These results indicate that while the lactacin biosynthesis machinery can produce the active mature peptide C55 α , it cannot produce either of the hybrid bacteriocins where Ltn lead-

ers are used in attempt to enhance the generation of active mature processed C55 peptides.

Site-directed mutagenesis reveal that residue L21 is essential for LtnA1 production

Site-directed mutagenesis of LtnA1 was carried out in order to assess the biological significance of changing any of the 4 amino acids in LtnA1 (N15, A17, L21 and A27) to their staphylococcal C55 counterparts. Several attempts to generate an A27S mutant failed. However, mutants N15K, A17N and L21A were introduced into the genes for the prepeptides. Therefore N15K, A17N and L21A mutant peptides were successfully engineered. While concentrated preparations (solid phase extraction) of N15K and A17N supernatants retained high activity (20,240 AU/ml) the amino acid change of leucine to an alanine at position 21, which is in the putative lipid II binding region completely abolished the inhibitory capacity of the corresponding strain (0 AU/ml) (Fig. 4). Notably, when the purified preparation (solid phase extraction) of L21A was combined with LtnA1 peptide a complementation effect was evident confirming the mass spectrometry finding that LtnA2 was produced. On the other hand, when L21A was combined with LtnA2 peptide no complementation effect was evident supporting the mass spectrometry result that the LtnA1 mutant was not produced. In this

**Figure 2**

(A and B) Illustration of the requirement for synergistic activity of both structural components of the lantibiotics lactacin 3147 (LtnA1 and LtnA2) and staphylococcin C55 (C55 α and C55 β) for full activity of the lantibiotic. C and D illustrate cross complementation of the structural peptides of lactacin 3147 with those of staphylococcin C55. Isobologram graphs show nanomolar concentrations of purified peptides of lactacin 3147 with those of staphylococcin C55. Each point on the graph represents 50% growth inhibition of the indicator *L. lactis* HP. Isobolograms of (E) represent purified lactacin peptides LtnA1 and LtnA2 titrated against each other, (F) represent purified staphylococcin C55 peptides C55 α and C55 β titrated against each other, (G) represent purified lactacin LtnA1 peptide titrated against staphylococcin C55 β and (H) represent purified staphylococcin C55 α titrated against lactacin LtnA2 peptide.

case, a reduced zone of inhibition was evident; however, this was due to the presence of concentrated LtnA2 peptide alone. In fact it would appear that an LtnA1 derivative is not produced by this strain suggesting that the lactacin 3147 biosynthetic machinery could not tolerate this change. This is further evidence of a difference in the processing machinery of lactacin 3147 and staphylococcin C55, given that the SacM1 modification enzyme tolerates the presence of an alanine at position 21 in C55 α .

Conclusion

L. lactis DPC3147 and *S. aureus* C55 contain plasmids which encode highly similar two component lantibiotics. Indeed, evolutionary divergence and amino acid identity

across the two lantibiotics confirm a common ancestor. The structural genes for the LtnA1 and C55 α peptides have diverged to a much lesser extent than their associated modification and processing machinery, indicating a high degree of conservation between sequence, structure and function in these peptides, almost certainly imposed by the role of these peptides in mediating binding to a highly conserved target in lipid II and subsequently promoting interaction with their LtnA2/C55 β partner peptides. It is interesting to note in this respect that the leader regions do diverge to the extent which would be predicted by the divergent modification genes. In contrast, far less conservation is required for the α -helical section of the LtnA2/C55 β peptides, where it is envisaged that amphipathic

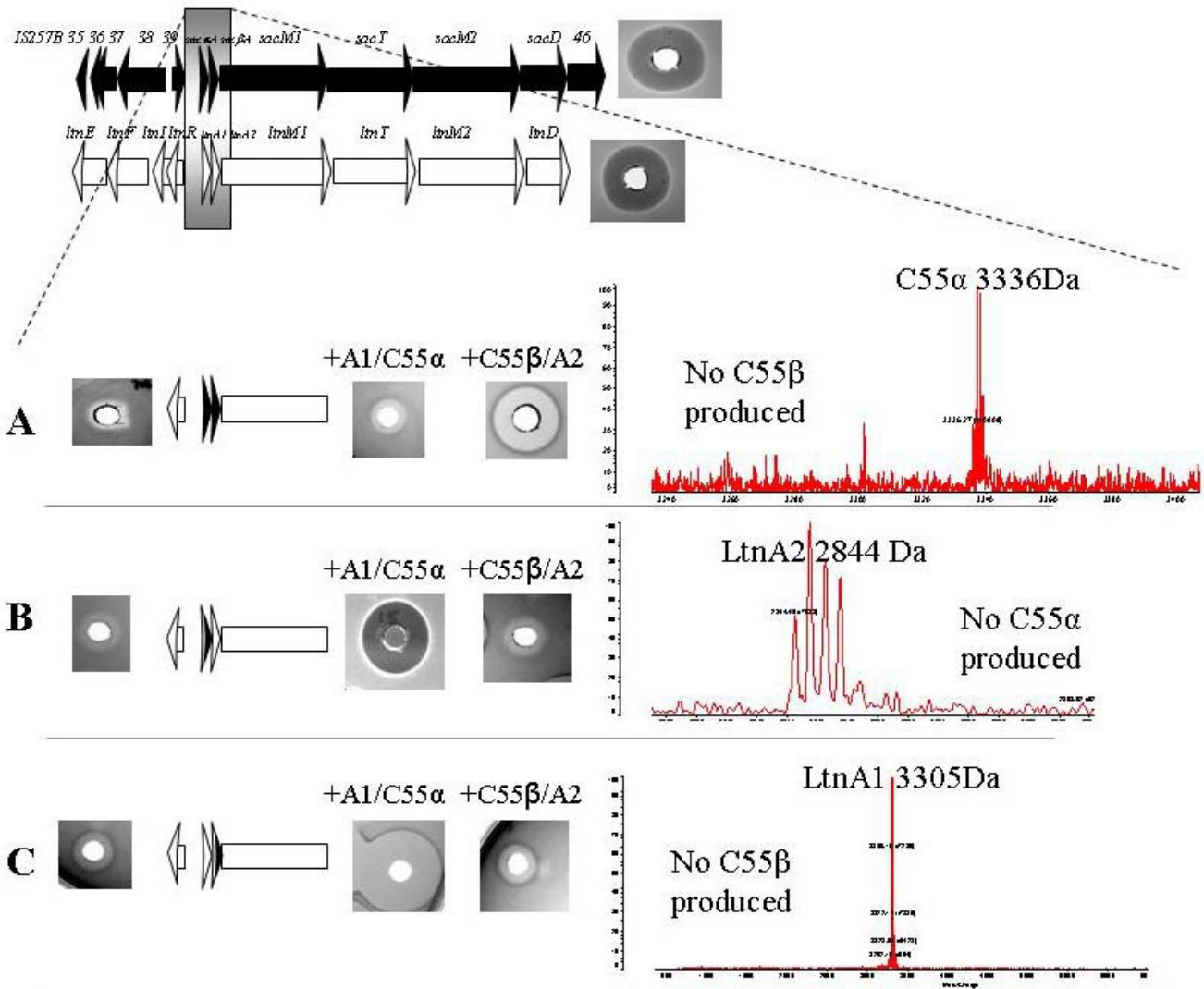


Figure 3

Genetic replacement study of combinations of the lactacin 3147 structural genes for the staphylococcal C55 structural genes on pMRC01. Genetic organization of *S. aureus* C55 pETB plasmid (gene cluster of staphylococcal C55) is represented by black arrows and *L. lactis* DPC3147 pMRC01 (gene cluster of lactacin 3147) is represented by white arrows. A. MG1363 pMRC01 with *ltnA1/A2* genes exactly replaced with staphylococcal C55 structural genes, *sacA/sacB*, this construct is called Mutant A. B. MG1363 pMRC01 with *ltnA1* structural gene exactly replaced by *sacA* structural gene, this construct is called *ltnA1/SacA* Hybrid. It also contains the wild type *ltnA2* gene. C. MG1363 pMRC01 with *ltnA2* structural gene exactly replaced by *sacB* structural gene, this construct is called *ltnA2/SacB* Hybrid. It also contains the wild type *ltnA1* gene. The well diffusion assay on the left of the constructs shows activity of a purified preparation (through a Varian C18 column) of the construct alone and the well diffusion assays on the right hand side shows activity after complementation with purified lactacin 3147 or staphylococcal C55 peptides. Mass spectrometry analysis of the constructs indicates the mass of the peptides produced. The scale of the y-axis of the mass spec. is A) 2800–3600 mass/charge, B) 2300–3700 mass/charge and C) 2700–4000 mass/charge.

conservative changes would not negatively affect the overall function of the peptide in pore formation. In addition, the difference in inhibitory spectra for both strains is negligible, both inhibiting a wide range of Gram-positive bacteria. When combinations of purified peptides were assayed, for example, LtnA1 with C55β and C55α with

LtnA2, they display a cross synergistic effect against the indicator strain *L. lactis* HP. In addition to this cross complementation between the lantibiotics, their specific activity was in the singular nanomolar range. This finding suggests that both lantibiotics use the lipid II target, despite differences in their lipid II binding pocket. It is not

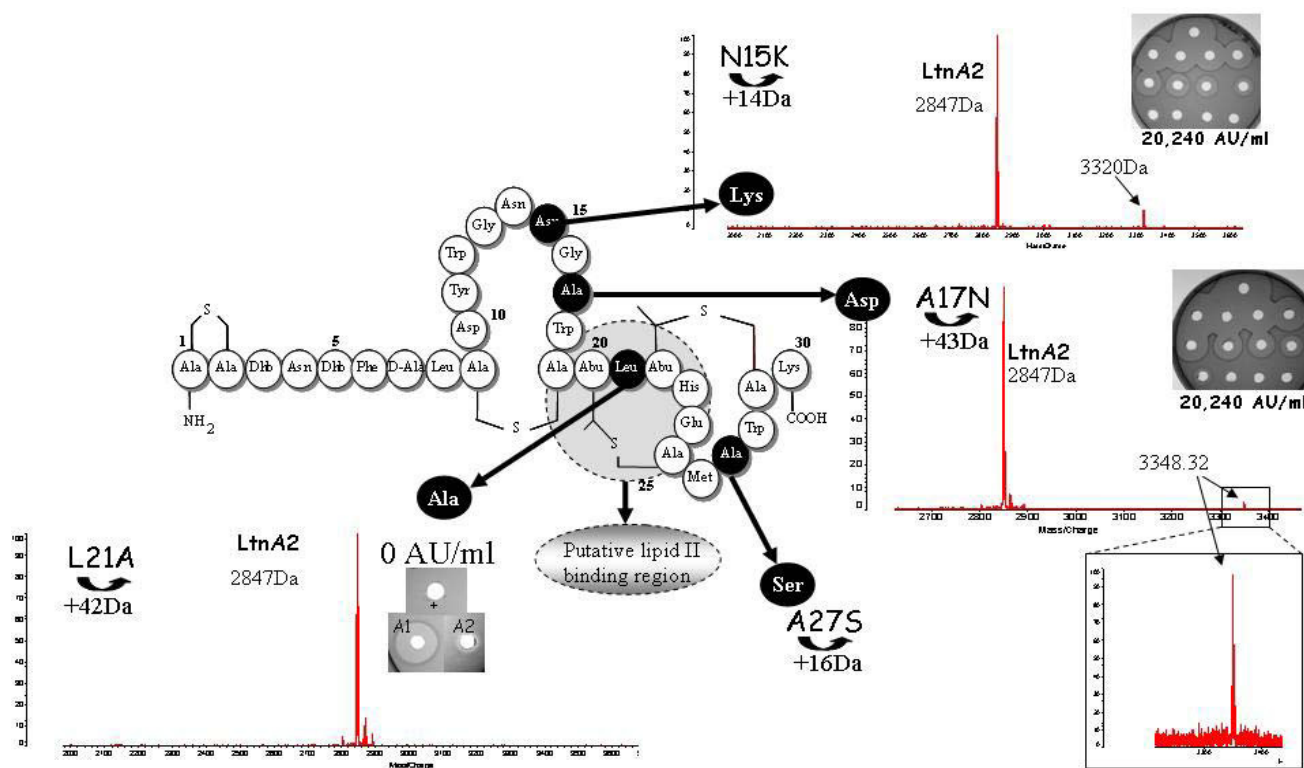


Figure 4

Site directed mutagenesis of the structural backbone of the lantibiotic peptide LtnA1. Mutants N15K, A17N and L21A are indicated by arrows. Well diffusion assays indicating the activity (AU/ml) of concentrated purified supernatants of the mutants (Varian C18 column) and mass spectrometry profiles accompany each mutant generated. The scale on the y-axis of the mass-spec is L21A: 2000–3700 mass/charge, A17N: 2700–3400 mass/charge, N15K: 2000–3600 mass/charge. The mutant L21A has no activity (0 AU/ml), the + indicates that this mutant was combined with LtnA1 and LtnA2, and a complementation effect was evident with LtnA1. The mutant A27S could not be generated but represents the fourth amino acid difference between staphylococin C55 α and LtnA1. The shaded broken circle represents the putative lipid II binding region of LtnA1.

surprising that LtnA1 and C55 α can be interchangeable as they share 86% identity while on the other hand, LtnA2 and C55 β only share 55% identity. Nonetheless, when LtnA2 and C55 β were exchanged for each other no loss of activity was observed. This suggests that the region responsible for peptide:peptide (and possibly peptide lipid II) interaction spans the 16 amino acid region at the C terminus of both peptides (81% identity), while the more permissive N-terminus is responsible for membrane insertion and pore formation. While these results are obviously of interest with respect to lacticin 3147 and staphylococin C55 in particular, there are a number of broader implications. This is the first occasion upon which it has been demonstrated that the individual components of any sort of two-component bacteriocin, be they lantibiotics or non-lantibiotics, are interchangeable. It would also indicate that one could take advantage of the fact that functional domains are separated across two peptides. Theoretically A1/ α and A2/ β from different sources could be combined with a view to identifying pairs that

have more potent activity against a particular target organism.

Interestingly, at a molecular level, the lacticin 3147-biosynthetic machinery was capable of producing the lantionine containing C55 α peptide when preceded by the staphylococin C55 α leader. To our knowledge this is the first occasion upon which an active (β -methyl) lantionine-containing peptide has been produced from its own gene by biosynthetic machinery other than its own, without some manipulation of its leader region. Previously it was established that processed, albeit inactive, nisin could only be produced by the subtilin biosynthetic machinery if a nisin-subtilin chimera containing the subtilin leader was first generated [24]. It is thus surprising that when the C55 leader was precisely replaced with the lacticin LtnA1 leader (LtnA1/Sac α hybrid) production of C55 α was eliminated rather than improved (Fig. 3B). It was previously established that processing of lacticin 481 by LctM occurred independently of the first 10 N-terminally

located residues of the LctA leader [25]. Significantly, although the LtnA1 and C55 α leaders are only 48% identical, they are 74% identical with respect to the 19 C-terminally located residues. This identity is likely to be responsible for successful biosynthesis and production by the lactacin 3147 machinery. It may also mean that one or more of the five residue differences within this region could explain the negative impact of the LtnA1 leader. Thus, in this instance at least, the leader appears to be specific to the peptide that it exports rather than to the biosynthetic machinery. With respect to C55 β it is not surprising, given the relatively lower levels of homology with LtnA2 both within the structural and leader regions, that heterologous production was not successful.

Mature LtnA1 differs from C55 α with respect to at least four residues. There is, however, some ambiguity with respect to the identity of the amino acid at position 7 of C55 α . It may be that this residue is a D-alanine, as is the case for LtnA1, rather than the Dha reported previously [6]. This suggestion is based on the fact that amino acid analysis predicts the presence of three alanines in the mature form of C55 α (data not shown) and that the C55 operon contains an LtnJ homolog [26]. With respect to the four confirmed differences site directed mutagenesis was employed to convert the individual amino acids of LtnA1 into its C55 counterpart where three out of the four mutants were successfully created. Interestingly, it was found that an exchange of leucine 21 for alanine abolished peptide production of the associated mutant peptide. It is noteworthy that a corresponding leucine is also found in a number of other lantibiotics within the same subgroup as LtnA1 i.e. mersacidin [27], actagardine [20], and plantaricin W [28]. Alignments of closely related globular peptides show that residues surrounding this leucine are highly conserved and in the case of mersacidin are found to be involved in lipid II binding [29]. In contrast, the site directed mutants of N15K and A17N tolerated change and the peptides were highly active. It may be that the presence of an alanine at position 21 of these peptides is only successful if complementary residues are located at positions 15, 17 and/or 27. It will be interesting to determine in the future whether it is possible to restore production/activity of the LtnA1-L21A mutant through the introduction of compensatory mutations.

We have thus established that because of their two component nature it is possible to combine the attributes of two lantibiotics such as lactacin 3147 and staphylococin C55 in vitro to produce new antimicrobials. Should it prove possible to build on these successes a great number of two-component mixtures, limited only by the number of two-component lantibiotics present in nature, would be possible. It is very interesting that such remarkably similar systems ended up in dissimilar organisms.

Methods

Bacterial strains, culture conditions, inhibitory spectrum assays and cross complementation assays

Bacterial strains and plasmids used in this study are listed in Table 1 and Table 2. *L. lactis* subsp. *lactis* DPC3147, *L. lactis* subsp. *cremoris* HP and strains used in inhibitory spectra study (Table 1) were obtained from the culture collection at the Moorepark Food Research Centre, Teagasc, Fermoy, Co. Cork, Ireland. *S. aureus* C55, phage group II type71 strain [30], was obtained from Department of Microbiology, University of Otago. Lactococcal strains were grown at 30°C on M17 [31] supplemented with 0.5% w/v lactose (LM17) or glucose (GM17). *S. aureus* C55 was grown at 37°C on Tryptic Soy broth (Difco). Solid media was prepared by the addition of 1% agar. *L. lactis* DPC3147 and *S. aureus* C55 were grown in modified tryptone-yeast (TY) broth [32] for the purpose of peptide purification. All strains were stocked at -20°C in 40% glycerol. Bacteriocin activity of cultures, *L. lactis* DPC3147 and *S. aureus* C55, was assessed using deferred antagonism assay technique [33]. Briefly, 10 μ l of overnight culture (10^8 cells per ml) was spotted on petri dishes containing 20 ml of solidified GM17 and allowed to grow overnight at 30°C or 37°C. The resultant growth was overlaid with molten agar containing 1×10^6 cells of indicator strain listed in Table 1. Inhibitory activity of the concentrated supernatant preparations from *L. lactis* and *S. aureus* was assessed using well diffusion assays described by Ryan *et al.*, (1996). In this method, each indicator strain (10^6 cells per ml of an overnight culture), was seeded into molten agar (48°C). Following this, the concentrated supernatants of lactacin 3147 and staphylococin C55 (50 μ l) were dispensed into wells and the seeded plates were incubated at 30°C or 37°C. In addition, cross complementation assays of lactacin 3147 and staphylococin C55 peptides was carried out by the well diffusion assay technique also, whereby molten LM17 agar was seeded with the indicator *L. lactis* HP and 25 μ l of concentrated preparations of peptides were combined and assayed in wells.

Bioinformatic analysis and homology modelling

Nucleotide sequence analysis was performed using the DNASTar software package (DNASTar, Madison, WI, U.S.A.). Sequence alignments were performed using the CLUSTAL method [34] of the Megalign program of the DNASTar software package. The 3D structure of LtnA1 which differs in sequence from C55 α by just four amino acids was used as a backbone to predict a model structure for C55 α . Homology modelling was performed using SWISS MODEL and PDB Viewer [35], a fully automated protein structure homology-modelling server. The amino acid sequence was mapped onto LtnA1. The resulting superimposition of C55 α on LtnA1 was then visualised using the molecular viewer CHIMERA [36].

Table 2: Cloning strains and plasmids used in this study

Strain or plasmid	Relevant characteristics	Reference
Strains		
MG1363	Plasmid-free derivative of <i>L. lactis</i> 712	Gasson, 1983
MG1614	Streptomycin resistant derivative of MG1363	Gasson, 1983
MG1363 (pMRC01)	MG1363 transconjugant harbouring pMRC01	Coakley et al., 1997
MG1363 (pVE6007)	MG1363 harbouring pVE6007, Cm ^r	Maguin et al., 1992
MG1363 pMRC01 pORI-SOEA pVE6007	MG1363 harbouring pMRC01, pVE6007 and pORI-SOEA	This study
MG1363 pMRC01 pORI-SOEB pVE6007	MG1363 harbouring pMRC01, pVE6007 and pORI-SOEB	This study
MG1363 pMRC01 pORI-SOEC pVE6007	MG1363 harbouring pMRC01, pVE6007 and pORI-SOEC	This study
MG1363 pMRC01 pORI-SOEA	MG1363 harbouring pORI-SOEA integrated into pMRC01	This study
MG1363 pMRC01 pORI-SOEB	MG1363 harbouring pORI-SOEB integrated into pMRC01	This study
MG1363 pMRC01 pORI-SOEC	MG1363 harbouring pORI-SOEC integrated into pMRC01	This study
Mutant A	MG1363 transconjugant harbouring pMRC01 <i>sacA</i> Δ <i>sacβ</i> Δ <i>ltnA1</i> Δ2	This study
LtnA1/Sacα Hybrid	MG1363 transconjugant harbouring pMRC01 <i>ltnA1</i> Δ <i>leadersacα</i> Δ <i>ltnA1</i> (<i>sacα</i> is fused to <i>ltnA1</i> leader)	This study
LtnA2/Sacβ Hybrid	MG1363 transconjugant harbouring pMRC01 <i>ltnA2</i> Δ <i>leadersacβ</i> Δ <i>ltnA2</i> (<i>sacβ</i> is fused to <i>ltnA2</i> leader)	This study
<i>E. coli</i> EC101	<i>E. coli</i> JM101 with <i>repA</i> from pWV01 integrated into the chromosome	Law et al., 1995
<i>E. coli</i> EC101 pORI280	<i>E. coli</i> EC101 harbouring pORI280	Leenhouts et al., 1996
<i>E. coli</i> EC101 pORI-ltnA1A2	<i>E. coli</i> EC101 harbouring pORI280-ltnA1A2	Cotter et al., 2005
<i>E. coli</i> pORI-N15K	<i>E. coli</i> EC101 harbouring pORI-N15K	This study
<i>E. coli</i> pORI-A17N	<i>E. coli</i> EC101 harbouring pORI-A17N	This study
<i>E. coli</i> pORI-L21A	<i>E. coli</i> EC101 harbouring pORI-L21A	This study
MG1363 pMRC01 pVE6007 pORI-N15K	MG1363 harbouring pMRC01, pVE6007 and pORI-N15K	This study
MG1363 pMRC01 pVE6007 pORI-A17N	MG1363 harbouring pMRC01, pVE6007 and pORI-A17N	This study
MG1363 pMRC01 pVE6007 pORI-L21A	MG1363 harbouring pMRC01, pVE6007 and pORI-L21A	This study
MG1363 pMRC01 pORI-N15K	MG1363 harbouring pORI-N15K integrated into pMRC01	This study
MG1363 pMRC01 pORI-A17N	MG1363 harbouring pORI-A17N integrated into pMRC01	This study
MG1363 pMRC01 pORI-L21A	MG1363 harbouring pORI-L21A integrated into pMRC01	This study
LtnA1-N15K	MG1363 harbouring pMRC01 LtnA1-N15K	This study
LtnA1-A17N	MG1363 harbouring pMRC01 LtnA1-A17N	This study
LtnA1-L21A	MG1363 harbouring pMRC01 LtnA1-L21A	This study
Plasmids		
pORI280	RepA ⁺ ori ⁺ β-galactosidase-positive Ery ^r integration vector	Leenhouts et al., 1996
pORI-SOEA	<i>ltnA1</i> Δ <i>sacβ</i> Δ <i>ltnA1</i> containing derivative of pORI280	This study
pORI-SOEB	<i>ltnA1</i> Δ <i>leadersacα</i> Δ <i>ltnA1</i> containing derivative of pORI280	This study
pORI-SOEC	<i>ltnA2</i> Δ <i>leadersacβ</i> Δ <i>ltnA2</i> containing derivative of pORI280	This study
pVE6007	RepA ⁺ , Cm ^r , temperature sensitive derivative of pWV01	Maguin et al., 1992
pORI280-ltnA1A2	<i>ltnA1</i> Δ2 containing derivative of pORI280	Cotter et al., 2005
pORI-N15K	<i>ltnA1</i> site directed mutant N15K derivative of pORI280	This study
pORI-A17N	<i>ltnA1</i> site directed mutant A17N derivative of pORI280	This study
pORI-L21A	<i>ltnA1</i> site directed mutant L21A derivative of pORI280	This study

Purification of lacticin (LtnA1 and LtnA2) and staphylococcin C55 (C55α and C55β) peptides

Overnight cultures of the producing strains, *L. lactis* DPC3147 and *S. aureus* C55 were inoculated into 2 L of modified TY broth (0.5% inoculum) and incubated overnight at 30°C and 37°C respectively. The cells were subsequently removed by centrifugation at 7,000 × g for 20 min. The resulting supernatant was applied to a column (3 by 23 cm) containing a 60 g bed of XAD-16 resin (Sigma-Aldrich Co. Ltd., Dorset, England) at a flow rate of 900 ml hour⁻¹ and the column then washed with 1 L of 40% aqueous ethanol. Inhibitory activity was subsequently eluted with 1 L of 70% propan-2-ol, pH 2 (adjusted to pH 2 with concentrated HCL). The propan-2-ol was removed by rotary evaporation and the resultant preparation was applied to a Varian C₁₈ Bond Elut Column (Varian, Harbor City, CA) pre-equilibrated with

methanol and water. The column was subsequently washed with 120 ml of 40% ethanol and inhibitory activity eluted with 100 ml of 70% propan-2-ol, pH 2. The bacteriocin preparation was concentrated to a volume of ~5 ml through the removal of propan-2-ol by rotary evaporation. Aliquots of 1 ml were then purified by solid phase extraction whereby aliquots were applied to a phenomenex C₁₈ reverse phase (RP)-HPLC column (Phenomenex, Macctesfield, Cheshire, UK) previously equilibrated with 0.1% aqueous trifluoroacetic acid (TFA). The column was subsequently developed in a gradient of 27 to 53% propan-2-ol containing 0.1% TFA at a flow rate of 2.9 ml min⁻¹. Fractions were collected and assayed for activity against the indicator strain *L. lactis* HP as described above. Each culture was assessed according to their HPLC profile and proposed fractions representing lacticin 3147 peptides LtnA1 and LtnA2 and staphylococcin C55 peptides C55α

Table 3: Primers used in this work

Primer name	Primer sequence ^a
Genetic Replacement Study	
SOEA	AAC TGC AGT TAT ATA TTT GCG GC
SOEB	GAT ATG AAC CTC CTT ATT
SOE1	AAT AAG GAG GTT CAT ATC ATG AAA AGT TCT TTT TTA
SOE2	TTC ATT TTT TAC TCC TAG CAA GCG CGC GTA CAA GC
SOE3	TAG GAG TAA AAA ATG AA 3
SOED	ACG AAT TCT CTT ACA GAG TT
SOE6	GAAGATGTATTTGGTGC GTAGTACAAACACTTTT
SOE7	CGCACCAAATACATCTTC
SOE4	ATTAATTA AAAATTTGTTATTA ACTTATTTACACCAAGACAT
SOE5	GTTAATAACAAATTTTAAATTAAT
SOE8	GAGTCTCATGGAGGAGGAACACCTTTAGCCTTATTG
SOE9	TGTTCTCCATGAGACTC
Check primers genetic replacement study	
CheckC55 α _1_for	AACACTTTTTCTTTGAGTG
CheckC55 α _rev	GACATACATTCGTGAGTA
1CheckC55 α _rev	ACAAGCTCCAAAAATATCA
CheckC55 β 2_for	ACCGGGGTGATAGGTTAT
1CheckC55 β _for	TACTGATGATGAAGTATATGC
CheckC55 β _rev	ATATAACCTATCACCCCG
CheckltnR_for	GAGATAGTACTCTGTAC
CheckltnM1_rev	GATTTATCTTCTCAATG
Residue Specific Mutagenesis	
N15K_for	CTCAGTGATTACTGGGGAAATTTAGGGGCTTGGTGTACACTCAC
N15K_rev	GTGAGTGACACCAAGCCCCTAAATTTCCCCAGTAATCACTGAG
A17N_for	GATTACTGGGGAAATAACGGGAAC TGGTGTACACTCACTCATG
A17N_rev	CATGAGTGAGTGTACACCAGTTCCTCGTTATTTCCCCAGTAATC
L21A_for	AATAACGGGGGGTGGTGTACAGCAACTCATGAATGTATGGCTTG
L21A_rev	CAAGCCATACATTCATGAGTTGCTGTACACCACCCCGTTATT
A27S_for	CACTCACTCATGAATGTATGTCGTGGTGTAAATAAGTTAATAAC
A27S_rev	GTTATTAACAATTTTACACCACGACTAACATTCATGAGTGAGTG
Check primers residue specific mutagenesis	
CheckN15K_for	GATTACTGGGGAAATTTA
CheckA17N_for	TGGGGAAATAACGGGAAC
CheckL21A_for	GGGGGGTGGTGTACAGCA
CheckA27S_for	ACTCATGAATGTATGTCG
CheckSDM_rev	TGTCGAATTCATTTCTGGAAAAAC

a. Primer sequences are given in the 5' to 3' direction

and C55 β were subjected to mass analysis with a Shimadzu Biotech MALDI-TOF Mass Spectrometer (model AXIMA-CFR plus). In order to locate complementary activity during the purification protocol, 25 μ l aliquots of putative LtnA1 fractions were cross-tested with isolated peptide LtnA2 and vice versa. Similarly, putative C55 α fractions were combined with C55 β to investigate complementation. Amino acid analysis of the lactacin 3147

peptides and staphylococcal C55 were performed in the Department of Molecular and Cell Biology, University of Aberdeen, Scotland.

Specific activity determination and generation of isobologram graphs

Ninety six well microtitre plates were used to determine the minimum inhibitory concentration of 50% (MIC₅₀)

of *L. lactis* HP, using a combination of purified preparations of LtnA1, LtnA2, C55 α , and C55 β . Triplicate wells, containing 3 separate *L. lactis* HP cultures were included in each microtitre plate. The total volume in each well was 200 μ l and experimental wells comprised broth (media), combinations of purified peptides LtnA1, LtnA2, C55 α , C55 β and 150 μ l of a 1 in 10 dilution of overnight *L. lactis* HP cultures (diluted in growth media, L-M17). In addition, plates contained a number of blank wells (media only) and a number of control wells (untreated *L. lactis* HP, or *L. lactis* HP treated alone with LtnA1, LtnA2, C55 α , or C55 β) and plates were incubated at 30°C. The optical density at 600 nm (OD₆₀₀ nm) was recorded at time 0 and 5 h (Anthos 2001, Anthos Labtec Instruments). Triplicate readings were averaged, and blanks (media only) were subtracted from these readings. A 50% growth inhibition was determined as half the final OD₆₀₀ nm \pm 0.05. Concentrations of combinations of peptides, which caused 50% growth inhibition of *L. lactis* HP, were plotted to generate an isobologram.

Genetic replacement study

In order to exactly replace the lactacin 3147 structural genes *ltnA1* and *ltnA2* on pMRC01 with the staphylococcal C55 structural genes *sac α A* and *sac β A*, a spliced overlap extension (SOE) method was employed [23,37]. To generate this SOE product, primers SOEA, SOEB, SOE1, SOE2, SOE3 and SOED were designed (Table 3). Expand High fidelity (Roche diagnostics, East Sussex, UK) was used to amplify fragments for cloning. Two PCR products (P1 and P3), each 291 bp in length, were amplified from pMRC01 using primer pairs SOEA, SOEB and SOE3, SOED which amplify from either side of the *ltnA1A2* genes. The third product (P2), 433 bp in length, was amplified from *S. aureus* C55 using primer pair SOE1 and SOE2, representing *sac α Asac β A*. The resulting products were gel extracted using the genecleanII kit (Qbiogene, Inc., Carlsbad, CA). Product P1 and P2 were mixed in a 1:1 ratio, and reamplified by PCR, with the SOEA and SOE2 primers, resulting in a new (P1+P2) fragment. P1+P2 was then mixed in a 1:1 ratio with P3 and reamplified by PCR with primers SOEA and SOED generating a spliced product (P1+P2+P3), whereby the staphylococcal C55 structural genes precisely replace the lactacin structural genes. This product was cloned in to pCR^{2.1}-TOPO[®] vector (Invitrogen[™] Life Technologies) and sequenced (Lark Technologies) and subsequently cloned into the erythromycin (Ery) resistant integration vector pORI280 generating the plasmid pORI-SOEA (Table 2). The plasmid pORI-SOEA was transformed into *E. coli* EC101 (RepA⁺) [38]. Blue colonies on Ery (150 μ g ml⁻¹) and 5-bromo-4-chloro-3-indolyl- β -D-galactosidase (X-Gal; 40 μ g ml⁻¹) on Luria-Bertani agar (Difco) were selected, and restriction digest was used to confirm the correct insert. The plasmid pORI-SOEA was then electroporated into

competent *L. lactis* MG1363 cells [39,40] containing both pMRC01 and the temperature-sensitive chloramphenicol resistant (Cm^r) RepA⁺ helper plasmid pVE6007 [41]. Temperature induced curing of pVE6007 at 39°C along with the selective pressure of Ery resistance ensured the integration of pORI-SOEA into pMRC01. To excise pORI280, the Ery resistant and Cm sensitive colonies were passaged in 10 ml of GM17 broth without antibiotic selection at 39°C. After 12 consecutive transfers (0.1% inoculum), white colonies appeared indicating a second crossover event leading to the loss of pORI280 and the generation of Mutant A (Table 2). PCR was used to assess deletion-replacement of target genes, using check primers (Table 3) outside the SOE product in pMRC01 and internal to the C55 structural genes. The above method was also employed to generate MG1363 pMRC01 *ltnA1*leadersac α A Δ ltnA1 (LtnA1/Sac α Hybrid) and MG1363 pMRC01 *ltnA2*leadersac β A Δ ltnA2 (LtnA2/Sac β Hybrid) which exactly replaced either the lactacin 3147 *ltnA1* gene with staphylococcal C55 propeptide segment of the structural *sac α A* gene or the lactacin 3147 *ltnA2* gene with staphylococcal C55 propeptide segment of the structural *sac β A* gene respectively, in pMRC01 (Table 2). The primers used to generate LtnA1/Sac α Hybrid were as follows; SOEA, SOE6, SOE7, SOE4, SOE5, and SOED (Table 3). The primers used to generate LtnA2/Sac β Hybrid were SOEA, SOE8, SOE9, SOE2, SOE3, and SOED (Table 3).

Residue specific mutagenesis

QuikChange XL site-directed mutagenesis (Stratagene) was used to incorporate changes into LtnA1 (changing it into its staphylococcal C55 α counterpart) according to manufacturers instructions. Briefly, PCR of the template pORI280-*ltnA1A2* generated by Cotter et al., (2005) was used to produce the DNA fragments incorporating the site directed changes encoded on the specifically designed oligonucleotide primers (Table 3). The products were digested with the enzyme *Dpn1* and transformed into *E. coli* host EC101. In this way the following pORI280-*ltnA1* derivatives were made: pORI-N15K, pORI-A17N and pORI-L21A (Table 2). PCR was used to screen for candidate *E. coli* EC101 transformants using check primers (Table 3). In all cases successful mutagenesis was confirmed by DNA sequencing. Mutants were electroporated into MG1363 pMRC01 pVE6007 and were incorporated into pMRC01 by double-crossover homologous recombination in place of the corresponding region (Table 2). DNA sequencing was used to confirm successful mutagenesis in the lactococcal hosts.

Determination of bacteriocin activity

Bacteriocin activity was determined by the agar well diffusion assay as described by Parente and Hill [42]. Molten agar was seeded with an indicator strain and dispensed into petri dishes. Wells of approximately 4.6mm in diam-

eter were bored in the agar and a 50 µl volume of a two fold serial dilution of a bacteriocin preparation was dispensed into each well.

Authors' contributions

EBOC Primary author and contributed to all experiments. PC reviewed, Site directed mutagenesis experiments, and intellectual contribution to the manuscript. POC Mass Spectrometry analysis, HPLC analysis and specific activity analysis. OOS performed the homology modelling. JRT intellectual input behind the cross complementation. RPR Principle investigator and intellectual input. CH Principle investigator and intellectual input. All authors have read and approved the final manuscript.

Acknowledgements

The authors would like to thank Elaine Lawton for technical assistance. Eileen O'Connor is in receipt of a Teagasc Walsh Fellowship. This work was funded by the National Development Plan 2000–2006 and the Science Foundation of Ireland funded Centre for Science, Engineering and Technology (SCI-CSET): the Alimentary Pharmabiotic Centre.

References

- McAuliffe O, Ross RP, Hill C: **Lantibiotics: structure, biosynthesis and mode of action.** *FEMS Microbiol Rev* 2001, **25(3)**:285-308.
- Pag U, Sahl HG: **Multiple activities in lantibiotics--models for the design of novel antibiotics?** *Curr Pharm Des* 2002, **8(9)**:815-833.
- Xie L, van der Donk WA: **Post-translational modifications during lantibiotic biosynthesis.** *Curr Opin Chem Biol* 2004, **8(5)**:498-507.
- Cotter PD, Hill C, Ross RP: **Bacterial lantibiotics: strategies to improve therapeutic potential.** *Curr Protein Pept Sci* 2005, **6(1)**:61-75.
- Ryan MP, Jack RW, Josten M, Sahl HG, Jung G, Ross RP, Hill C: **Extensive post-translational modification, including serine to D-alanine conversion, in the two-component lantibiotic, lactacin 3147.** *J Biol Chem* 1999, **274(53)**:37544-37550.
- Navaratna MA, Sahl HG, Tagg JR: **Two-component anti-Staphylococcus aureus lantibiotic activity produced by Staphylococcus aureus C55.** *Appl Environ Microbiol* 1998, **64(12)**:4803-4808.
- Holo H, Jeknic Z, Daeschel M, Stevanovic S, Nes IF: **Plantaricin W from Lactobacillus plantarum belongs to a new family of two-peptide lantibiotics.** *Microbiology* 2001, **147(Pt 3)**:643-651.
- Gilmore MS, Segarra RA, Booth MC, Bogie CP, Hall LR, Clewell DB: **Genetic structure of the Enterococcus faecalis plasmid pADI-encoded cytolytic toxin system and its relationship to lantibiotic determinants.** *J Bacteriol* 1994, **176(23)**:7335-7344.
- McClerren AL, Cooper LE, Quan C, Thomas PM, Kelleher NL, van der Donk WA: **Discovery and in vitro biosynthesis of haloduracin, a two-component lantibiotic.** *PNAS* 2006, **103(46)**:17243-17248.
- Yonezawa H, Kuramitsu HK: **Genetic analysis of a unique bacteriocin, Smb, produced by Streptococcus mutans GS5.** *Antimicrob Agents Chemother* 2005, **49(2)**:541-548.
- Hyink O, Balakrishnan M, Tagg JR: **Streptococcus rattus strain BHT produces both a class I two-component lantibiotic and a class II bacteriocin.** *FEMS Microbiol Lett* 2005, **252(2)**:235-241.
- Navaratna MA, Sahl HG, Tagg JR: **Identification of genes encoding two-component lantibiotic production in Staphylococcus aureus C55 and other phage group II S. aureus strains and demonstration of an association with the exfoliative toxin B gene.** *Infect Immun* 1999, **67(8)**:4268-4271.
- Yamaguchi T, Hayashi T, Takami H, Ohnishi M, Murata T, Nakayama K, Asakawa K, Ohara M, Komatsuzawa H, Sugai M: **Complete nucleotide sequence of a Staphylococcus aureus exfoliative toxin B plasmid and identification of a novel ADP-ribosyltransferase, EDIN-C.** *Infect Immun* 2001, **69(12)**:7760-7771.
- Ladhani S, Joannou CL, Lochrie DP, Evans RW, Poston SM: **Clinical, microbial, and biochemical aspects of the exfoliative toxins causing staphylococcal scalded-skin syndrome.** *Clin Microbiol Rev* 1999, **12(2)**:224-242.
- Dougherty BA, Hill C, Weidman JF, Richardson DR, Venter JC, Ross RP: **Sequence and analysis of the 60 kb conjugative, bacteriocin-producing plasmid pMRCO1 from Lactococcus lactis DPC3147.** *Mol Microbiol* 1998, **29(4)**:1029-1038.
- Morgan SM, O'Connor P M, Cotter PD, Ross RP, Hill C: **Sequential actions of the two component peptides of the lantibiotic lactacin 3147 explain its antimicrobial activity at nanomolar concentrations.** *Antimicrob Agents Chemother* 2005, **49(7)**:2606-2611.
- Wiedemann I, Breukink E, van Kraaij C, Kuipers OP, Bierbaum G, de Kruijff B, Sahl HG: **Specific binding of nisin to the peptidoglycan precursor lipid II combines pore formation and inhibition of cell wall biosynthesis for potent antibiotic activity.** *J Biol Chem* 2001, **276(3)**:1772-1779.
- Brotz H, Bierbaum G, Leopold K, Reynolds PE, Sahl HG: **The lantibiotic mersacidin inhibits peptidoglycan synthesis by targeting lipid II.** *Antimicrob Agents Chemother* 1998, **42(1)**:154-160.
- Brotz H, Josten M, Wiedemann I, Schneider U, Gotz F, Bierbaum G, Sahl HG: **Role of lipid-bound peptidoglycan precursors in the formation of pores by nisin, epidermin and other lantibiotics.** *Mol Microbiol* 1998, **30(2)**:317-327.
- Zimmermann N, Jung G: **The three-dimensional solution structure of the lantibiotic murein-biosynthesis-inhibitor actagardine determined by NMR.** *Eur J Biochem* 1997, **246(3)**:809-819.
- Martin NI, Sprules T, Carpenter MR, Cotter PD, Hill C, Ross RP, Vederas JC: **Structural characterization of lactacin 3147, a two-peptide lantibiotic with synergistic activity.** *Biochemistry* 2004, **43(11)**:3049-3056.
- McAuliffe O, Ryan MP, Ross RP, Hill C, Breeuwer P, Abee T: **Lactacin 3147, a broad-spectrum bacteriocin which selectively dissipates the membrane potential.** *Appl Environ Microbiol* 1998, **64(2)**:439-445.
- Cotter PD, Hill C, Ross RP: **A food-grade approach for functional analysis and modification of native plasmids in Lactococcus lactis.** *Appl Environ Microbiol* 2003, **69(1)**:702-706.
- Chakicherla A, Hansen JN: **Role of the leader and structural regions of prelantibiotic peptides as assessed by expressing nisin-subtilin chimeras in Bacillus subtilis 168, and characterization of their physical, chemical, and antimicrobial properties.** *J Biol Chem* 1995, **270(40)**:23533-23539.
- Xie L, Miller LM, Chatterjee C, Averin O, Kelleher NL, van der Donk WA: **Lactacin 481: in vitro reconstitution of lantibiotic synthetase activity.** *Science* 2004, **303(5658)**:679-681.
- Cotter PD, O'Connor PM, Draper LA, Lawton EM, Deegan LH, Hill C, Ross RP: **Posttranslational conversion of L-serines to D-alanines is vital for optimal production and activity of the lantibiotic lactacin 3147.** *Proc Natl Acad Sci U S A* 2005, **102(51)**:18584-18589.
- Prasch T, Naumann T, Markert RL, Sattler M, Schubert W, Schaal S, Bauch M, Kogler H, Griesinger C: **Constitution and solution conformation of the antibiotic mersacidin determined by NMR and molecular dynamics.** *Eur J Biochem* 1997, **244(2)**:501-512.
- Turner DL, Brennan L, Meyer HE, Lohaus C, Siethoff C, Costa HS, Gonzalez B, Santos H, Suarez JE: **Solution structure of plantaricin C, a novel lantibiotic.** *Eur J Biochem* 1999, **264(3)**:833-839.
- Hsu ST, Breukink E, Bierbaum G, Sahl HG, de Kruijff B, Kaptein R, van Nuland NA, Bonvin AM: **NMR study of mersacidin and lipid II interaction in dodecylphosphocholine micelles. Conformational changes are a key to antimicrobial activity.** *J Biol Chem* 2003, **278(15)**:13110-13117.
- Dajani AS, Wannamaker LW: **Demonstration of a bactericidal substance against beta-hemolytic streptococci in supernatant fluids of staphylococcal cultures.** *J Bacteriol* 1969, **97(3)**:985-991.
- Terzaghi BE, Sandine WE: **Improved medium for lactic streptococci and their bacteriophages.** *Appl Microbiol* 1975, **29**:807-813.
- Ryan MP, Flynn J, Hill C, Ross RP, Meaney WJ: **The natural food grade inhibitor, lactacin 3147, reduced the incidence of mastitis after experimental challenge with Streptococcus dysgalactiae in nonlactating dairy cows.** *J Dairy Sci* 1999, **82(12)**:2625-2631.

33. Ryan MP, Rea MC, Hill C, Ross RP: **An application in cheddar cheese manufacture for a strain of *Lactococcus lactis* producing a novel broad-spectrum bacteriocin, lacticin 3147.** *Appl Environ Microbiol* 1996, **62(2)**:612-619.
34. Thompson JD, Higgins DG, Gibson TJ: **CLUSTAL W: improving the sensitivity of progressive multiple sequence alignment through sequence weighting, position-specific gap penalties and weight matrix choice.** *Nucleic Acids Res* 1994, **22(22)**:4673-4680.
35. Guex N, Peitsch MC: **SWISS-MODEL and the Swiss-Pdb-Viewer: an environment for comparative protein modeling.** *Electrophoresis* 1997, **18(15)**:2714-2723.
36. Pettersen EF, Goddard TD, Huang CC, Couch GS, Greenblatt DM, Meng EC, Ferrin TE: **UCSF Chimera--a visualization system for exploratory research and analysis.** *J Comput Chem* 2004, **25(13)**:1605-1612.
37. Horton RM, Cai ZL, Ho SN, Pease LR: **Gene splicing by overlap extension: tailor-made genes using the polymerase chain reaction.** *Biotechniques* 1990, **8(5)**:528-535.
38. Law J, Buist G, Haandrikman A, Kok J, Venema G, Leenhouts K: **A system to generate chromosomal mutations in *Lactococcus lactis* which allows fast analysis of targeted genes.** *J Bacteriol* 1995, **177(24)**:7011-7018.
39. Gasson MJ: **Plasmid complements of *Streptococcus lactis* NCDO 712 and other lactic streptococci after protoplast-induced curing.** *J Bacteriol* 1983, **154(1)**:1-9.
40. Holo H, Nes IF: **High-Frequency Transformation, by Electroporation, of *Lactococcus lactis* subsp. *cremoris* Grown with Glycine in Osmotically Stabilized Media.** *Appl Environ Microbiol* 1989, **55(12)**:3119-3123.
41. Maguin E, Duwat P, Hege T, Ehrlich D, Gruss A: **New thermosensitive plasmid for gram-positive bacteria.** *J Bacteriol* 1992, **174(17)**:5633-5638.
42. Parente E and C. Hill.: **A comparison of factors affecting the production of two bacteriocins from lactic acid bacteria.** *J Appl Bacteriol* 1992, **73**:290-298.
43. Wiedemann I, Bottiger T, Bonelli RR, Wiese A, Hagge SO, Gutschmann T, Seydel U, Deegan L, Hill C, Ross P, Sahl H-G: **The mode of action of the lantibiotic lacticin 3147 - a complex mechanism involving specific interaction of two peptides and the cell wall precursor lipid II.** *Molecular Microbiology* 2006, **61**:285-296.

Publish with **BioMed Central** and every scientist can read your work free of charge

"BioMed Central will be the most significant development for disseminating the results of biomedical research in our lifetime."

Sir Paul Nurse, Cancer Research UK

Your research papers will be:

- available free of charge to the entire biomedical community
- peer reviewed and published immediately upon acceptance
- cited in PubMed and archived on PubMed Central
- yours — you keep the copyright

Submit your manuscript here:
http://www.biomedcentral.com/info/publishing_adv.asp

