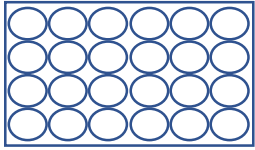


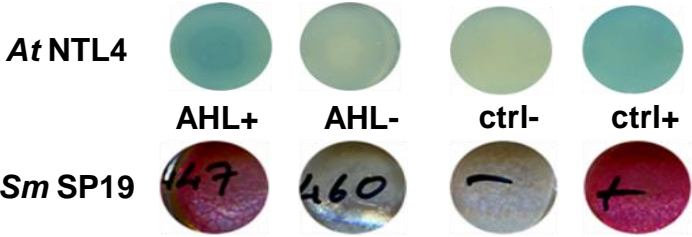
(A)

Incubate MSI
on 24 well MA
agar plates at
23°C overnight

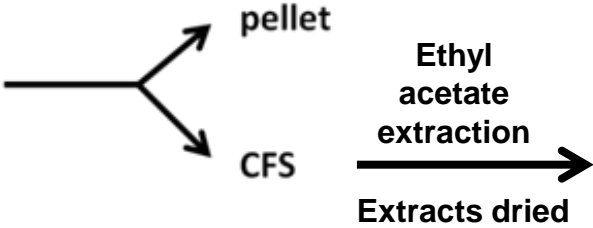


Overlay with soft
agar containing
indicator strain
(OD_{600nm} 0.5)

Incubate overnight
at 30°C



(B)



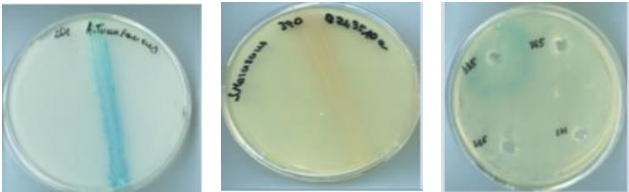
16S rDNA
Sequencing

Species level identification

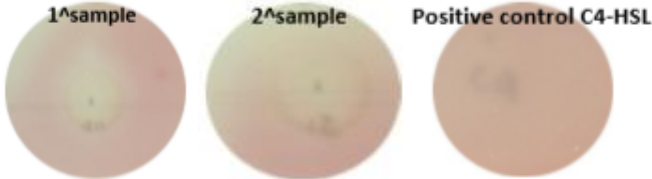
(C)

QS Biosensor Overlays

(i) MSI Streak (ii) MSI Supt



(iii) Lead MSI Extracts



Sample No	Biosensor Activated	Isolate Classification	TLC Spot Assay (Size mm)
12	<i>S.marcescens</i> SP19	<i>Pseudomonadaceae</i>	13
142	<i>S.marcescens</i> SP19	<i>Pseudomonadaceae</i>	5
163	<i>A.tumefaciens</i> NTL4	<i>Vibrionaceae</i>	6
230	<i>A.tumefaciens</i> NTL4	<i>Moraxellaceae</i>	6
211	<i>A.tumefaciens</i> NTL4	<i>Pseudoalteromonadaceae</i>	10
214	<i>A.tumefaciens</i> NTL4	<i>Pseudoalteromonadaceae</i>	6
335	<i>A.tumefaciens</i> NTL4	<i>Halomonadaceae</i>	8
394	<i>A.tumefaciens</i> NTL4	<i>Pseudoalteromonadaceae</i>	6
411	<i>S.marcescens</i> SP19	<i>Pseudomonadaceae</i>	30
419	<i>A.tumefaciens</i> NTL4	<i>Pseudoalteromonadaceae</i>	6