

Title	Lasing in nanoimprinted two-dimensional photonic crystal band-edge lasers
Authors	Reboud, V.;Romero-Vivas, J.;Lovera, Pierre;Kehagias, Nikolaos;Kehoe, Timothy;Redmond, Gareth;Sotomayor Torres, Clivia M.
Publication date	2013
Original Citation	Reboud, V., Romero-Vivas, J., Lovera, P., Kehagias, N., Kehoe, T., Redmond, G. and Torres, C. M. S. (2013) 'Lasing in nanoimprinted two-dimensional photonic crystal band-edge lasers', Applied Physics Letters, 102(7), pp. 073101. doi: 10.1063/1.4790646
Type of publication	Article (peer-reviewed)
Link to publisher's version	<a href="http://aip.scitation.org/doi/abs/10.1063/1.4790646">http://aip.scitation.org/doi/abs/10.1063/1.4790646</a> - 10.1063/1.4790646
Rights	© 2013 American Institute of Physics.This article may be downloaded for personal use only. Any other use requires prior permission of the author and AIP Publishing. The following article appeared in Reboud, V., Romero-Vivas, J., Lovera, P., Kehagias, N., Kehoe, T., Redmond, G. and Torres, C. M. S. (2013) 'Lasing in nanoimprinted two-dimensional photonic crystal band-edge lasers', Applied Physics Letters, 102(7), pp. 073101 and may be found at <a href="http://aip.scitation.org/doi/abs/10.1063/1.4790646">http://aip.scitation.org/doi/abs/10.1063/1.4790646</a>
Download date	2025-06-03 13:32:53
Item downloaded from	<a href="https://hdl.handle.net/10468/4287">https://hdl.handle.net/10468/4287</a>



# UCC

**University College Cork, Ireland**  
 Coláiste na hOllscoile Corcaigh

## Lasing in nanoimprinted two-dimensional photonic crystal band-edge lasers

V. Reboud<sup>\*</sup>, J. Romero-Vivas, P. Lovera, N. Kehagias, T. Kehoe, G. Redmond, and C. M. Sotomayor Torres

Citation: *Appl. Phys. Lett.* **102**, 073101 (2013); doi: 10.1063/1.4790646

View online: <http://dx.doi.org/10.1063/1.4790646>

View Table of Contents: <http://aip.scitation.org/toc/apl/102/7>

Published by the [American Institute of Physics](#)

---

### Articles you may be interested in

[Two-dimensional polymer photonic crystal band-edge lasers fabricated by nanoimprint lithography](#)

*Applied Physics Letters* **91**, 151101 (2007); 10.1063/1.2798250

---



# Lasing in nanoimprinted two-dimensional photonic crystal band-edge lasers

V. Reboud,<sup>1,2,a)</sup> J. Romero-Vivas,<sup>3</sup> P. Lovera,<sup>4</sup> N. Kehagias,<sup>1</sup> T. Kehoe,<sup>1</sup> G. Redmond,<sup>5</sup> and C. M. Sotomayor Torres<sup>1,6,7</sup>

<sup>1</sup>Catalan Institute of Nanotechnology, Campus UAB, Edifici CM3, ES 08193—Barcelona, Spain

<sup>2</sup>CEA-LETI-Minatec Grenoble, 17 rue des Martyrs, 38054 Grenoble, France

<sup>3</sup>Surface Physics Division, Faculty of Physics, Adam Mickiewicz University, ul. Umultowska 85, Poznan 61-614, Poland

<sup>4</sup>Tyndall National Institute, University College Cork, Lee Maltings, Cork, Ireland

<sup>5</sup>School of Physics and School of Chemistry and Chemical Biology, University College Dublin, Belfield, Dublin 4, Ireland

<sup>6</sup>Catalan Institute for Research and Advanced Studies ICREA, 08010 Barcelona, Spain

<sup>7</sup>Department of Physics, Universitat Autònoma de Barcelona, 08193 Bellaterra (Barcelona), Spain

(Received 3 August 2012; accepted 19 October 2012; published online 19 February 2013)

We demonstrate optically pumped polymer band-edge lasers based on a two-dimensional photonic crystal slab fabricated by nanoimprint lithography (NIL). Lasing was obtained at the photonic band-edge, where the light exhibits a low group velocity at the  $\Gamma$  point of the triangular lattice photonic crystal band structure. The active medium was composed of a dye chromophore-loaded polymer matrix directly patterned in a single step by nanoimprint lithography. Plane-wave and finite difference time domain algorithms were used to predict experimental lasing frequencies and the lasing thresholds obtained at different  $\Gamma$  points. A low laser threshold of  $3 \mu\text{J}/\text{mm}^2$  was achieved in a defect-free photonic crystal thus showing the suitability of nanoimprint lithography to produce cost-efficient optically pumped lasers. © 2013 American Institute of Physics.

[<http://dx.doi.org/10.1063/1.4790646>]

In recent years, polymer dye lasers have attracted considerable attention mainly due to the ease with which dyes may be incorporated in polymer, their capability to present a large tuneable emission by simply using different dyes, and the possibility to pattern polymers with cost-efficient fabrication processes over large areas for photonic and bio-sensing applications. So far, optically pumped organic lasers have been demonstrated over a large range of the visible spectra.<sup>1–6</sup> These fabrication properties and optical characteristics when combined with the control of light by photonic crystal structures have led to study polymer photonic crystals (PhC) band-edge lasers. They possess an intrinsic feedback mechanism based on Bloch waves near the PhC band edge leading to Bragg reflections induced by periodic structure, which reduce the group velocity of photons to zero at certain points of the band structure. Efficient distributed feedback is obtained by introducing a periodic modulation of the refractive index to the active material. Until now, efforts have been focused on demonstrating new functionalities of two-dimensional photonic crystals, such as couplers,<sup>7</sup> filters,<sup>8</sup> waveguides,<sup>9</sup> and lasers,<sup>10</sup> using mature fabrication tools developed for silicon and semiconductor technology. Nanoimprint lithography (NIL) has been proposed as a candidate of high-resolution lithography for high volume and cost-effective production over large areas with sub-10 nm resolution.<sup>11</sup> NIL is a technique characterised by the unique ability to pattern active or functionalised polymer media in a single step.<sup>12,13</sup> For instance, an important number of photonic components fabricated by NIL have recently been demonstrated, such as a wavelength filter based on a Bragg grating on a waveguide,<sup>14</sup> a micro-ring resonator,<sup>15</sup> 1D and 2D

band-edge lasers,<sup>16–18</sup> and photonic crystals for light extraction applications.<sup>19,20</sup> In this work, we have achieved two-dimensional polymer photonic crystal band-edge lasers fabricated by nanoimprint lithography in a dye-loaded printable polymer in a single fabrication step. The devices exhibit lasing oscillations at the different  $\Gamma$ -point band edge frequencies. Lasing frequencies predicted by plane wave expansion are in good agreement with the measured ones. The difference in lasing thresholds at the  $\Gamma$  point band edge frequencies are explained by calculating the mode distribution overlap within the gain medium.

The polymer was loaded with dye by the simple process of mixing Rhodamine 6G (from *Sigma Aldrich*) with the printable polymer mr-NIL 6000 (from *micro resist technology*) in two concentrations of  $2.5 \times 10^{-3}$  mol/l and  $5 \times 10^{-3}$  mol/l. mr-NIL 6000 was chosen due to its relatively low glass transition temperature, around  $45^\circ\text{C}$ , which enables low temperature printing and minimises the risk of degradation of the organic emitters during thermal NIL.<sup>21</sup> The dye-loaded polymer was spin-coated on a glass substrate with a thickness of 400 nm. The refractive index of the polymer was measured at a wavelength of 550 nm by ellipsometry to be 1.614. Silicon stamps were fabricated by electron beam lithography using a *Jeol 6000* instrument. A dose of  $130 \mu\text{C}/\text{cm}^2$  and a beam current of 100 pA were used with a 150 nm thick layer of ZEP 520 resist (*Zeon Corporation*) pre-baked at  $120^\circ\text{C}$  and developed during 30 s in a solution of ZED N50 (*Zeon Corporation*). The silicon stamp was etched to a depth of 350 nm using an inductively coupled plasma (ICP) reactive ion etching system (*Surface Technology System*) with a mixture of  $\text{SF}_6$  and  $\text{C}_4\text{F}_8$  gases. The stamp contained two triangular arrays of circular pillars with lattice constant of 500 and 580 nm. It was treated with an anti-adhesive

<sup>a)</sup>vincent.reboud@cea.fr.

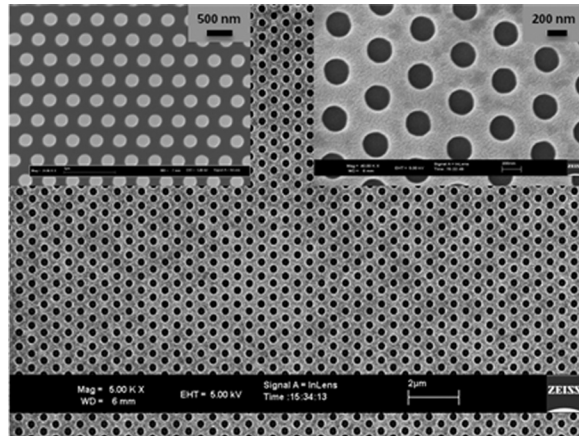


FIG. 1. SEM micrograph of nanoimprinted triangular lattice photonic crystals in dye-doped mr-NIL 6000 printable polymer. Inset: (left) SEM top-view of one silicon stamp and (right) zoom of a dye-doped nanoimprinted photonic crystals.

monolayer of tridecafluor-1, 1, 2, 2-tetrahydrooctyl trichlorosilane deposited in the vapour phase, resulting in a low surface energy,<sup>22</sup> to facilitate the release of the stamp from the polymer. Using a 2.5 in. *Obducat* nanoimprinting machine, the stamp was imprinted into the spin-coated polymer at a pressure of 60 bars for 5 min under a temperature of 90 °C. The pressure was sustained during cooling until the temperature reached 40 °C.

Photoluminescence (PL) was measured normal to the sample surface through a 10× microscope objective under laser excitation of 514.5 nm with a power of 200 μW. The dye-loaded polymer was imprinted with a non-structured stamp to test for changes to its optical properties due to the imprinting process. A 5% decrease in the PL intensity of the dye loaded polymer was measured, for both concentrations, compared to freshly spin-coated films. SEM images of the 2D nanoimprinted PhCs in the dye chromophore-loaded polymer matrix are shown in Figure 1.

TABLE I. Comparison of the measured laser thresholds for the PhC band-edge lasers with the lattice constants  $a = 500$  nm ( $\Gamma_1$ ) and  $a = 580$  nm ( $\Gamma_3$ ) for the two dye concentrations.

Dye concentration	$\Gamma_1$	$\Gamma_3$
$5 \times 10^{-3}$ mol/l	$3 \mu\text{J}/\text{mm}^2$	$3.9 \mu\text{J}/\text{mm}^2$
$2.5 \times 10^{-3}$ mol/l	$3.6 \mu\text{J}/\text{mm}^2$	$4.7 \mu\text{J}/\text{mm}^2$

The samples were kept in a vacuum cell to reduce photobleaching of the dye and were optically pumped with a 1 ns pulse length 10 Hz frequency-doubled Q-switched Nd:VO4 laser light at 532 nm focused to a 40 μm diameter spot on the sample surface. Figure 2 shows the measured emission spectra of the 2D PhCs with 500 and 580 nm lattice constants at different pump power, i.e., three times above the measured laser threshold for the  $5 \times 10^{-3}$  mol/l concentration nanoimprinted dye loaded polymer (Table I). The spectral laser linewidth at the full width at half maximum (FWHM) was measured to 1.1 nm above the threshold (Figures 2(a)–2(c)). This value is limited by the resolution of the spectrometer. The FWHM of the emission spectrum below the laser threshold is equal to 45 nm (Figure 2(d)). Figure 2(c) shows the emitted spectra of the 2D PhC below the threshold and under a pulsed excitation of  $17 \mu\text{J}/\text{mm}^2$ . For a dye concentration of  $5 \times 10^{-3}$  mol/l, the emission intensities were plotted as function of the incident excitation fluence for the laser with 500 nm lattice constant (inset of Figure 2(a)) and for the laser with 580 nm lattice constant (inset of Figure 2(a)). The light input-output relation exhibits a sharp turn at the laser threshold. Similar spectra were obtained for the polymer doped with a dye concentration of  $2.5 \times 10^{-3}$  mol/l showing the same lasing frequencies. At the photonic band-edge, the photon-matter interaction increases due to the significant reduction of the group velocity. To identify band-edge frequencies, a plane wave algorithm from *Optiwave Corporation* was used to calculate the 2D dispersion relation of the 2D PhC with a triangular lattice, for the transverse

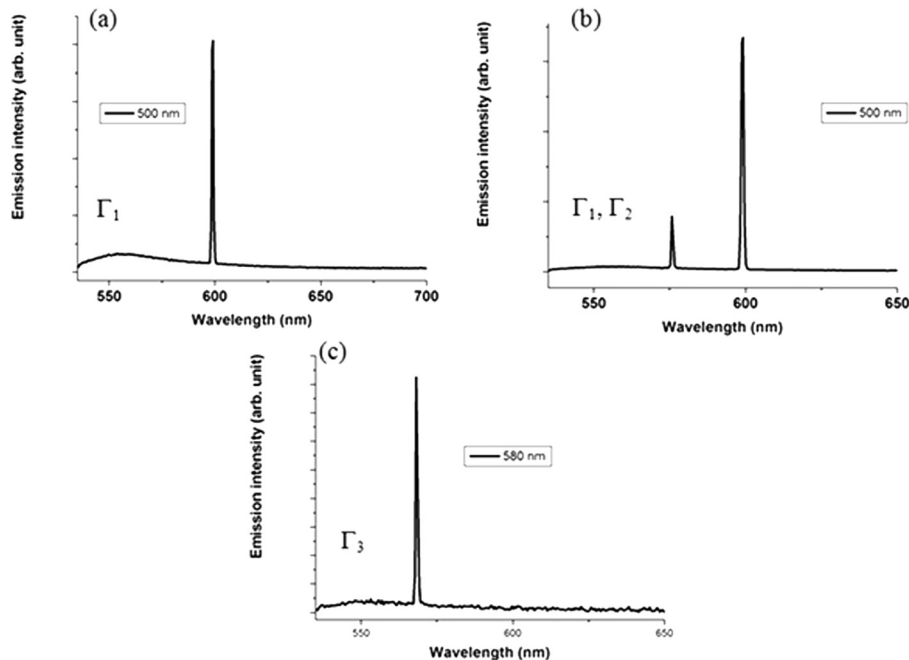


FIG. 2. Photoluminescence of 2D PhC with a 500 nm lattice constant under a pulsed excitation of (a)  $3.8 \mu\text{J}/\text{mm}^2$  (lasing at the  $\Gamma_1$  point), and (b) solid line:  $17 \mu\text{J}/\text{mm}^2$  (lasing at the  $\Gamma_1$  and  $\Gamma_2$  points), dot line: emission spectrum of Rhodamine 6G in mr-NIL 6000 below the laser threshold, (c) Photoluminescence of 2D PhC with a 580 nm lattice constant under a pulsed excitation of  $16.5 \mu\text{J}/\text{mm}^2$  (lasing at the  $\Gamma_3$  point). Dye concentration of  $5 \times 10^{-3}$  mol/l<sup>-1</sup>, d/ Emission spectrum of Rhodamine 6G in mr-NIL 6000 below the laser threshold. Insets of (a) and (c): Peak emission intensity versus the absorbed excitation fluence associated to each PhC for a dye concentration of  $5 \times 10^{-3}$  mol/l.

electric (TE) modes. Transverse magnetic (TM) modes are expected to have higher losses because TM modes have a lower effective refractive index and, therefore, a lower confinement than TE modes.

The three first band edges can be identified at the  $\Gamma$  point with reduced frequencies of 0.836 ( $\Gamma_1$ ), 0.868 ( $\Gamma_2$ ), and 1.021 ( $\Gamma_3$ ) (Figure 3(a)). The measured reduced frequencies, which are the ratio of the lasing frequencies to the lattice constant of the PhCs, were calculated from Figure 2 to be 0.83, 0.87, and 1.03, respectively. Good agreement is obtained between simulation and experiments for the determination of lasing frequencies at the  $\Gamma$  points.

Measured lasing thresholds for the two lattice constants at the two dye concentrations are shown in Table I. To understand the threshold difference at  $\Gamma_1$  and at  $\Gamma_3$  points, the magnetic field distribution normal to the array,  $H_z$ , for the band-edge mode at the two band edges was calculated by

the finite-difference time domain (FDTD) method using perfectly matched layer boundaries in all directions.

An amplitude profile of the two band-edge modes is formed over the PhC area as shown on Figure 3(b). The black circles in both pairs of the Figure 3(b) denote the air-hole boundary and the area outside the circles corresponds to the dye-doped polymer. Part of the mode energy at the  $\Gamma_3$  point overlaps with the holes in the array where there is no gain medium and consequently this energy is lost. The overlap of the modes with the gain medium is calculated for the two modes with the band edges at the  $\Gamma_1$  and  $\Gamma_3$  points. A 31.6% difference in the overlap is obtained for the two modes explaining the higher threshold for the mode at the  $\Gamma_3$  point. This value is slightly over estimated in comparison to the calculated difference of 23% between the lasing threshold at the  $\Gamma_1$  and the  $\Gamma_3$  points for the two dye concentrations (Table I) since the residual layer is not taking in account in the simulation.

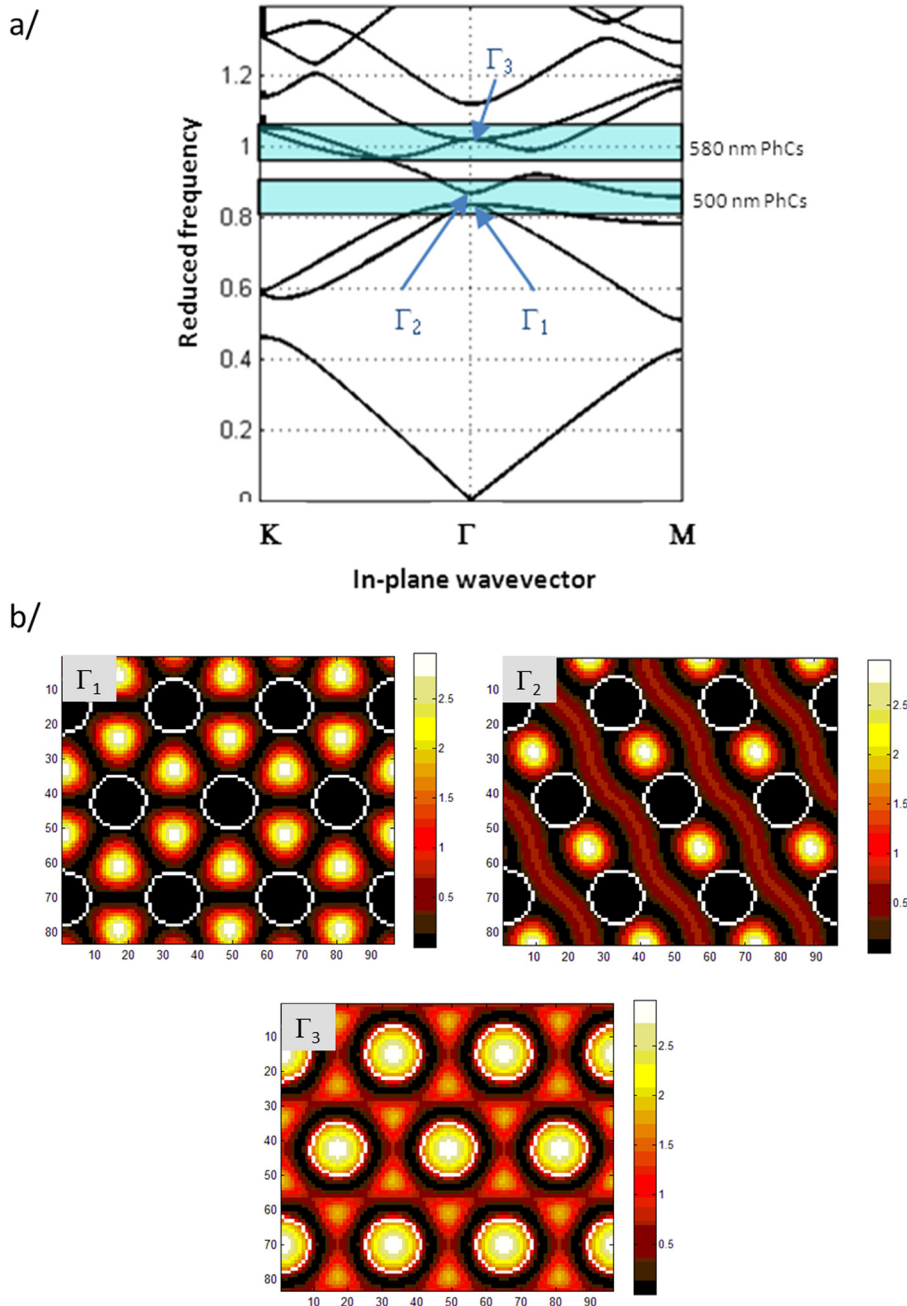


FIG. 3. (a) Photonic band structure of a triangular lattice 2D air hole PhC calculated with a Plane wave-basis frequency-domain method for TE polarization where  $a$  is the lattice constant and  $\lambda$  is the wavelength. Hole radius is  $R = 0.24a$ . The bands represent the gain bandwidth of Rhodamine 6G for PhC lattice constants  $a = 500$  nm and  $a = 580$  nm, respectively. (b) Calculated  $H_z$  magnetic-field density at the  $\Gamma_1$ ,  $\Gamma_2$ , and  $\Gamma_3$  points.



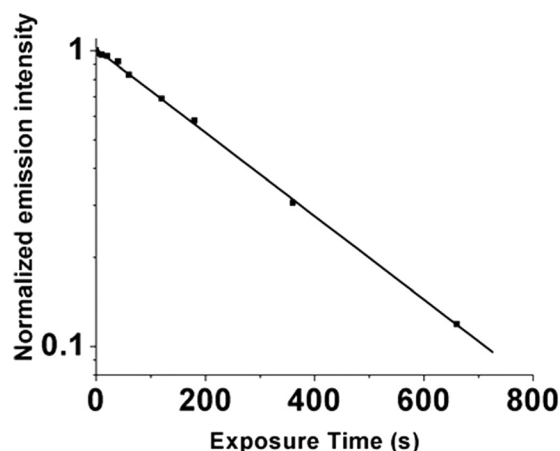


FIG. 4. Laser lifetime increasing the exposure time under pumping power of 2.8 the threshold level ( $8.5 \mu\text{J}/\text{mm}^2$  and pulse frequency: 10 Hz).

Finally, the lifetime of the band-edge laser was investigated by recording repeatedly the lasing intensity at the  $\Gamma_1$  point of the 500 nm pitch PhCs in a vacuum cell. Figure 4 shows the lifetime of the laser as a function of time, at a rate of 10 pulses per second at  $8.5 \mu\text{J}/\text{mm}^2$ , which corresponds to 2.8 times the laser threshold. The short lifetime of the 2D PhC band-edge lasers is due to photobleaching of the Rhodamine 6G. To increase the lifetime of the lasers, the dye molecules need to be replaced by more robust luminescence sources, for example, by semiconductor nanocrystals with optical gain,<sup>23</sup> embedded in the printable polymer.

In conclusion, we have demonstrated optically pumped lasing in two-dimensional polymer photonic crystal band-edge lasers operating in the visible range fabricated in a single step by nanoimprint lithography. Lasing was identified at three photonic band-edges ( $\Gamma_1$ ,  $\Gamma_2$ , and  $\Gamma_3$ ). The measured lasing frequencies are in good agreement with simulations. The difference in lasing threshold between modes at the  $\Gamma_1$  and  $\Gamma_3$  band-edges can be predicted by calculating the lasing mode overlap with the patterned area. We showed that nanoimprint lithography is suitable for the fabrication of cost-efficient, compact, and high quality surface emitting photonic crystal band-edge lasers. In the future, our work will focus on the study of light conversion performance of nanoimprinted band edge lasers and the characteristics of the emitted laser beam.

We gratefully acknowledge Mads Brøkner Christiansen and Anders Kristensen for their help with dye-doping printable polymer. The support of the EC-funded project NaPa-NIL is gratefully acknowledged. The content of this work is the sole responsibility of the authors.

- <sup>1</sup>T. Rabe, M. Hoping, D. Schneider, E. Becker, H. H. Johannes, W. Kowalsky, T. Weimann, J. Wang, P. Hinze, B. S. Nehls, U. Scherf, T. Farrell, and T. Riedl, *Adv. Funct. Mater.* **15**, 1188 (2005).
- <sup>2</sup>P. Gorn, T. Rabe, T. Riedl, W. Kowalsky, F. Galbrecht, and U. Scherf, *Appl. Phys. Lett.* **89**, 161113 (2006).
- <sup>3</sup>H. Nakanotani, S. Akiyama, D. Ohnishi, M. Moriwake, M. Yahiro, T. Yoshihara, S. Tobita, and C. Adachi, *Adv. Funct. Mater.* **17**, 2328 (2007).
- <sup>4</sup>J. R. Lawrence, E. B. Namdas, G. J. Richards, P. L. Burn, and I. D. W. Samuel, *Adv. Mater.* **19**, 3000 (2007).
- <sup>5</sup>I. D. W. Samuel and G. A. Turnbull, *Chem. Rev.* **107**, 1272 (2007).
- <sup>6</sup>B. K. Yap, R. D. Xia, M. Campoy-Quiles, P. N. Stavrinou, and D. D. C. Bradley, *Nature Mater.* **7**, 376 (2008).
- <sup>7</sup>S. Boscolo, M. Midrio, and T. F. Krauss, *Opt. Lett.* **27**, 1001 (2002).
- <sup>8</sup>Z. X. Qiang, W. D. Zhou, and R. A. Soref, *Opt. Express* **15**, 1823–1831 (2007).
- <sup>9</sup>G. Chen and J. U. Kang, *Opt. Lett.* **30**, 1656–1658 (2005).
- <sup>10</sup>D. Englund, H. Altug, I. Fushman, and J. Vuckovic, *Appl. Phys. Lett.* **91**, 071126 (2007).
- <sup>11</sup>S. Y. Chou, P. R. Krauss, and P. J. Resnstrom, *Appl. Phys. Lett.* **67**, 3114 (1995).
- <sup>12</sup>A. Genua, J. A. Alduncin, J. A. Pomposo, H. Grande, N. Kehagias, V. Reboud, C. M. Sotomayor, I. Mondragon, and D. Mecerreyes, *Nanotechnology* **18**, 215301 (2007).
- <sup>13</sup>V. Reboud, A. Z. Khokhar, B. Sepúlveda, D. Dudek, T. Kehoe, J. Cuffe, N. Kehagias, M. Lira-Cantu, N. Gadegaard, V. Grasso, V. Lambertini and C. M. Sotomayor Torres, *Nanoscale* **4**, 3495–3500 (2012).
- <sup>14</sup>S.-W. Ahn, K.-D. Lee, D.-H. Kim, and S.-S. Lee, *IEEE Photon. Technol. Lett.* **17**(10), 2122–2124 (2005).
- <sup>15</sup>D.-H. Kim, J.-G. Im, S.-S. Lee, S.-W. Ahn, and K.-D. Lee, *IEEE Photon. Technol. Lett.* **17**(11), 2352–2354 (2005).
- <sup>16</sup>C. L. C. Smith, J. U. Lind, C. H. Nielsen, M. B. Christiansen, T. Buss, N. B. Larsen, and A. Kristensen, *Opt. Lett.* **36**, 1392–1394 (2011).
- <sup>17</sup>E. B. Namdas, M. Tong, P. Ledochowitsch, S. R. Mednick, J. D. Yuen, D. Moses, and A. J. Heeger, *Adv. Mater.* **21**, 799–802 (2009).
- <sup>18</sup>V. Reboud, P. Lovera, N. Kehagias, M. Zelsmann, C. Schuster, F. Reuther, G. Gruetzner, G. Redmond, and C. M. Sotomayor Torres, *Appl. Phys. Lett.* **91**, 151101 (2007).
- <sup>19</sup>V. Reboud, N. Kehagias, M. Striccoli, T. Placido, A. Panniello, M. L. Curri, M. Zelsmann, F. Reuther, G. Gruetzner, and C. M. Sotomayor Torres, *J. Vac. Sci. Technol. B* **25**, 2642–2644 (2007).
- <sup>20</sup>N. Kehagias, V. Reboud, G. Chansin, M. Zelsmann, C. Jeppesen, F. Reuther, C. Schuster, M. Kubenz, G. Gruetzner, and C. M. Sotomayor Torres, *J. Vac. Sci. Technol. B* **24**, 3002–3005 (2006).
- <sup>21</sup>F.-H. Ko, L.-Y. Weng, C.-J. Ko, and T.-C. Chu, *Microelectron. Eng.* **83**, 864 (2006).
- <sup>22</sup>M. Bender, M. Otto, B. Hadam, B. Spangenberg, and H. Kurz, *Microelectron. Eng.* **61–62**, 407 (2002).
- <sup>23</sup>V. I. Klimov, S. A. Ivanov, J. Nanda, M. Achermann, I. Bezel, J. A. McGuire, and A. Piryatinski, *Nature* **447**, 441 (2007).