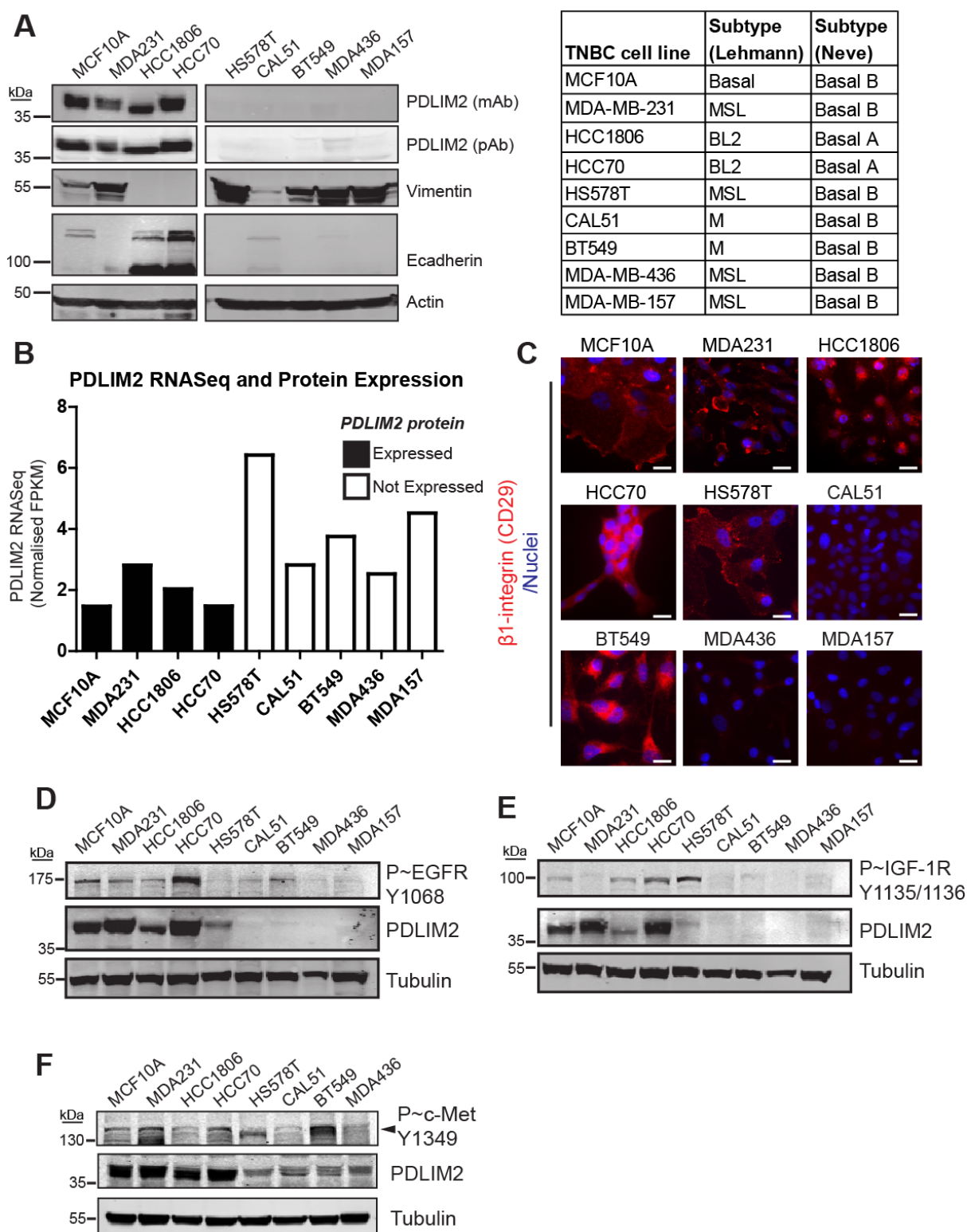


|                             |  |
|-----------------------------|--|
| Title                       | PDLIM2 is a marker of adhesion and $\beta$ -catenin activity in triple-negative breast cancer  |
| Authors                     | Cox, Orla T.;Edmunds, Shelley J.;Simon-Keller, Katja;Li, Bo;Moran, Bruce;Buckley, Niamh E.;Bustamante- Garrido, Milán F.;Healy, Nollaig;O'Flanagan, Ciara H.;Gallagher, William M.;Kennedy, Richard D.;Bernards, René;Caldas, Carlos;Chin, Suet-Feung;Marx, Alexander;O'Connor, Rosemary   |
| Publication date            | 2019-03-18   |
| Original Citation           | Cox, O. T., Edmunds, S. J., Simon-Keller, K., Li, B., Moran, B., Buckley, N. E., Bustamante-Garrido, M., Healy, N., O'Flanagan, C. H., Gallagher, W. M., Kennedy, R. D., Bernards, R., Caldas, C., Chin, S.-F., Marx, A. and O'Connor, R. (2019) 'PDLIM2 is a marker of adhesion and $\beta$ -catenin activity in triple-negative breast cancer', Cancer Research, 79(10), pp. 2619-2633. doi: 10.1158/0008-5472.CAN-18-2787 |
| Type of publication         | Article (peer-reviewed)  |
| Link to publisher's version | <a href="http://cancerres.aacrjournals.org/content/79/10/2619 - 10.1158/0008-5472.CAN-18-2787">http://cancerres.aacrjournals.org/content/79/10/2619 - 10.1158/0008-5472.CAN-18-2787</a>  |
| Rights                      | © 2019, American Association for Cancer Research. All rights reserved.   |
| Download date               | 2025-07-31 06:00:48  |
| Item downloaded from        | <a href="https://hdl.handle.net/10468/8050">https://hdl.handle.net/10468/8050</a>  |

**Supplementary Figure 4, related to Figure 4**



**Supplementary Figure 4, related to Figure 4:**

**A:** Characterization of TN breast cell lines used in this study. Immunoblots of whole cell lysates were probed for PDLIM2 expression with either Mouse monoclonal (Abcam; mAb) or custom polyclonal Rabbit (pAb) antibody and mesenchymal and epithelial markers, Vimentin and E-cadherin respectively. Actin was loading control. TN Breast cell line subtype

classifications according to Lehmann *et al*, 2011 or Neve *et al*, 2006 are shown in the table. BL2: basal-like2, M: mesenchymal, MSL: mesenchymal stem-like. **B:** Barchart depicting PDLIM2 RNASeq data extracted from Marcotte *et al*, 2016, and protein expression analysis of PDLIM2 expression in TN cell lines. **C:** Immunofluorescence micrographs of TN breast cell lines grown on coverslips in complete medium for 24hr. Cells were fixed and stained for activated  $\beta$ 1-integrin (CD29, red) and nuclei stained with Hoechst (blue). Scalebars represent 20 $\mu$ m. **D-F:** TN breast cell lines grown in complete medium for 24hr were lysed and examined for protein expression of Phospho-EGFR (D), Phospho-IGF-1R (E), Phospho-cMet (F), PDLIM2, and tubulin as loading control. Western blots are representative of at least 2-3 separate experiments.