

Title	Localized partitioning of enantiomers in solid samples of sulfoxides: importance of sampling method in determination of enantiopurity
Authors	Flynn, Aaran J.;Ford, Alan;Maguire, Anita R.
Publication date	2020-07-02
Original Citation	Flynn, A. J., Ford, A. and Maguire, A. R. (2020) 'Localized Partitioning of Enantiomers in Solid Samples of Sulfoxides: Importance of Sampling Method in Determination of Enantiopurity', The Journal of Organic Chemistry, 85(15), pp. 10216-10221. doi: 10.1021/acs.joc.0c01094
Type of publication	Article (peer-reviewed)
Link to publisher's version	<a href="https://pubs.acs.org/doi/10.1021/acs.joc.0c01094">https://pubs.acs.org/doi/10.1021/acs.joc.0c01094</a> - 10.1021/acs.joc.0c01094
Rights	© 2020 American Chemical Society. This document is the Accepted Manuscript version of a Published Work that appeared in final form in The Journal of Organic Chemistry, copyright © American Chemical Society after peer review and technical editing by the publisher. To access the final edited and published work see <a href="https://pubs.acs.org/doi/10.1021/acs.joc.0c01094">https://pubs.acs.org/doi/10.1021/acs.joc.0c01094</a>
Download date	2024-05-06 18:49:58
Item downloaded from	<a href="https://hdl.handle.net/10468/10542">https://hdl.handle.net/10468/10542</a>



# UCC

**University College Cork, Ireland**  
 Coláiste na hOllscoile Corcaigh

## Supporting Information

### Localized partitioning of enantiomers in solid samples of sulfoxides; importance of sampling method in determination of enantiopurity

Aaran J. Flynn,<sup>†</sup> Alan Ford,<sup>‡</sup> and Anita R. Maguire<sup>\*,§</sup>

<sup>†</sup>*School of Chemistry, Analytical and Biological Chemistry Research Facility, Synthesis and Solid State Pharmaceutical Centre, University College Cork, Cork T12 K8AF, Ireland*

<sup>‡</sup>*School of Chemistry, Analytical and Biological Chemistry Research Facility, University College Cork, Cork T12 K8AF, Ireland*

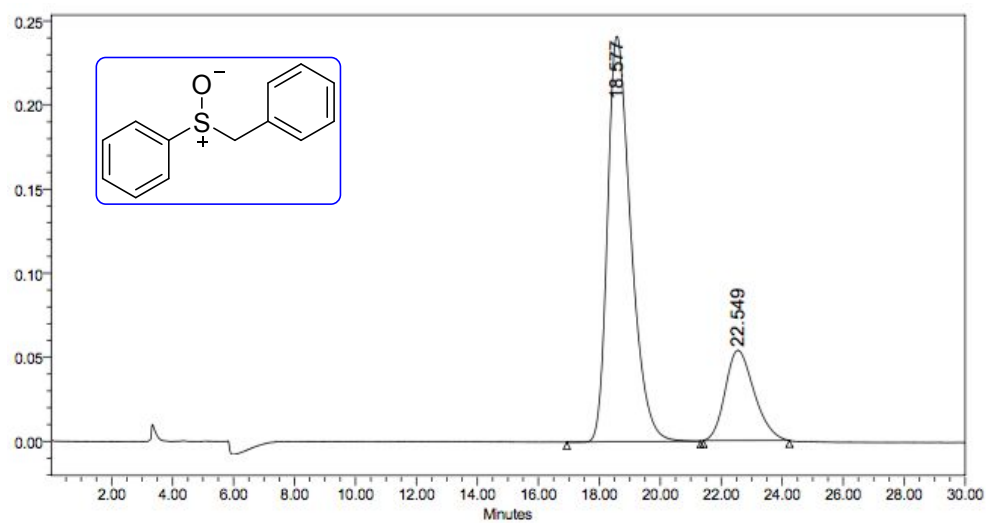
<sup>§</sup>*School of Chemistry and School of Pharmacy, Analytical and Biological Chemistry Research Facility, Synthesis and Solid State Pharmaceutical Centre, University College Cork, Cork T12 K8AF, Ireland.*

\* a.maguire@ucc.ie

#### Table of Contents

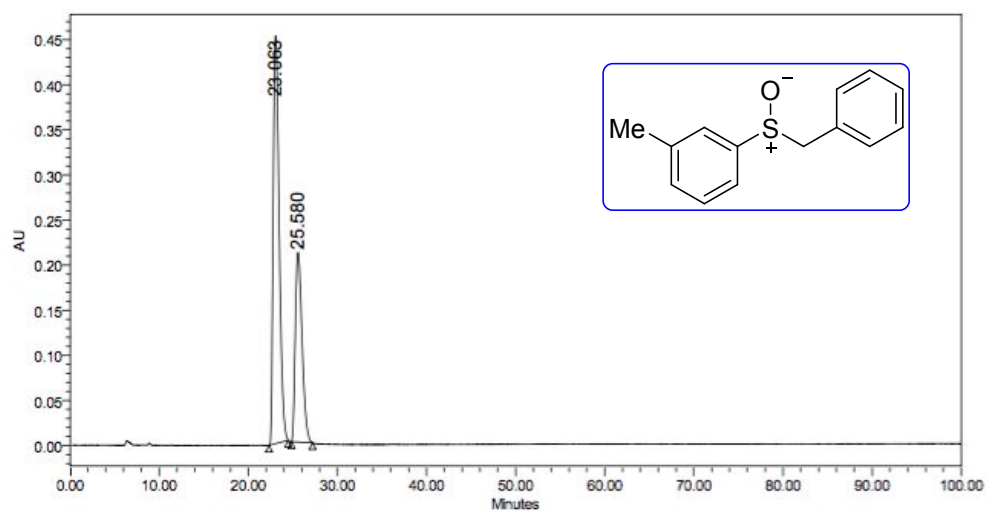
Chiral stationary phase HPLC chromatograms	S2–S5
--	-------

(R)-(+)-Benzyl phenyl sulfoxide **2**



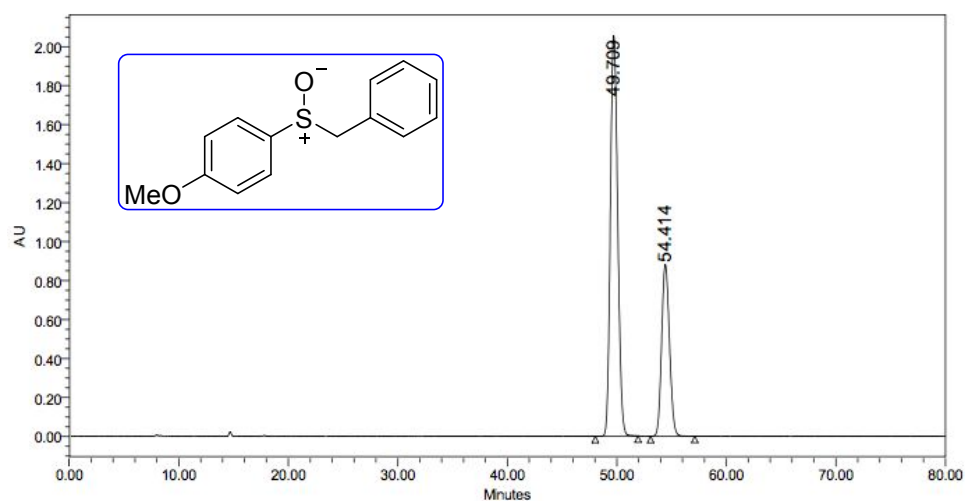
	RT	Area	% Area	Height
1	18.577	12801902	78.34	241356
2	22.549	3538993	21.66	53646

(R)-(+)-Benzyl *m*-tolyl sulfoxide **5**



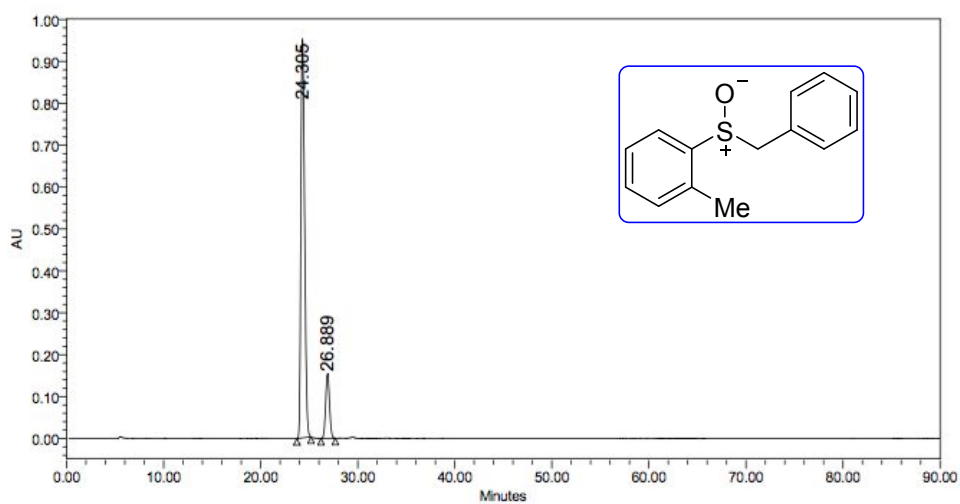
	RT	Area	% Area	Height
1	23.063	20915462	65.27	452870
2	25.580	11128891	34.73	210073

(R)-(+)-Benzyl *p*-methoxy sulfoxide **6**



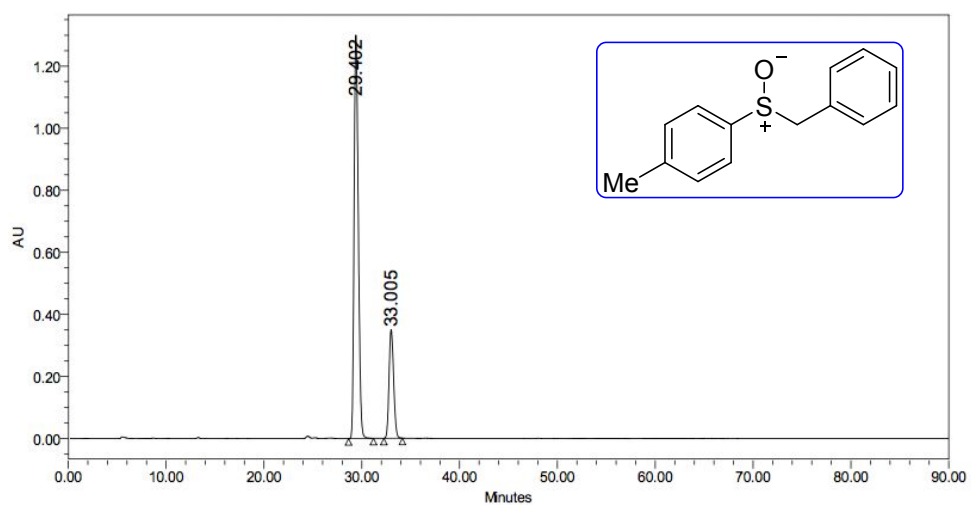
	RT	Area	% Area	Height
1	49.709	95515261	68.57	2056810
2	54.414	43774366	31.43	881888

(R)-(+)-Benzyl *o*-tolyl sulfoxide **7**



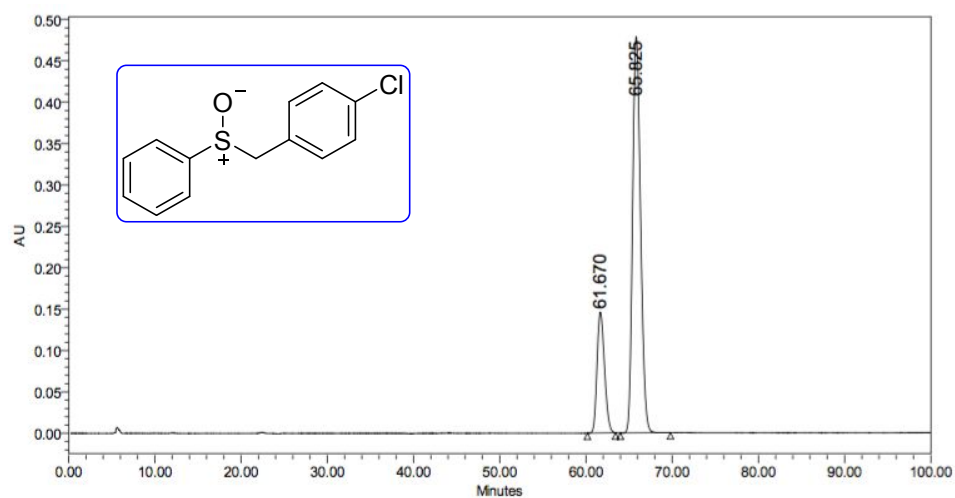
	RT	Area	% Area	Height
1	24.305	25103434	85.62	951905
2	26.889	4217411	14.38	152967

(R)-(+)-Benzyl *p*-tolyl sulfoxide **8**



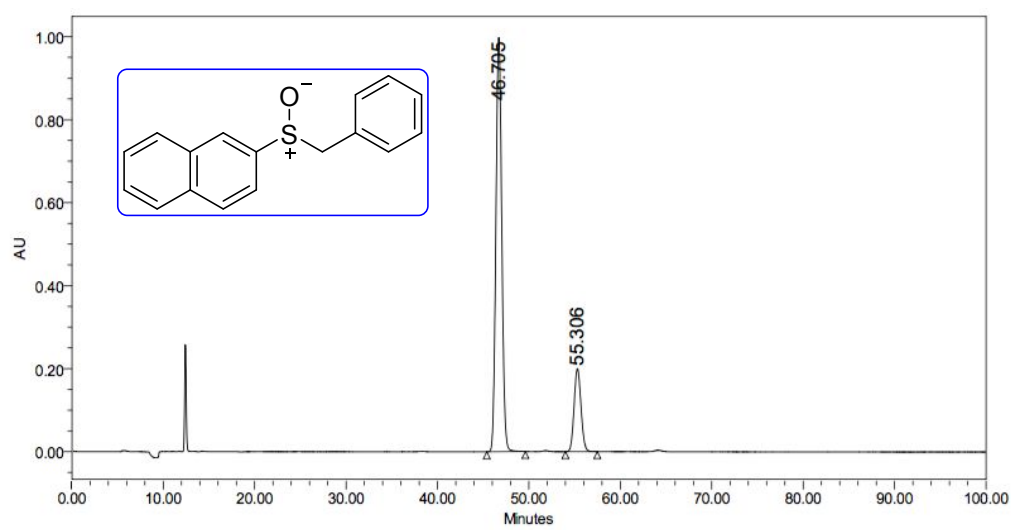
	RT	Area	% Area	Height
1	29.402	38832123	77.33	1298718
2	33.005	11381806	22.67	350564

(R)-(+)-4-Chlorobenzyl phenyl sulfoxide **9**



	RT	Area	% Area	Height
1	61.670	8793540	22.20	145899
2	65.825	30822044	77.80	478670

(R)-(+)-2-Naphthyl benzyl phenyl sulfoxide **11**



	RT	Area	% Area	Height
1	46.705	44411090	80.93	997687
2	55.306	10463565	19.07	200241