

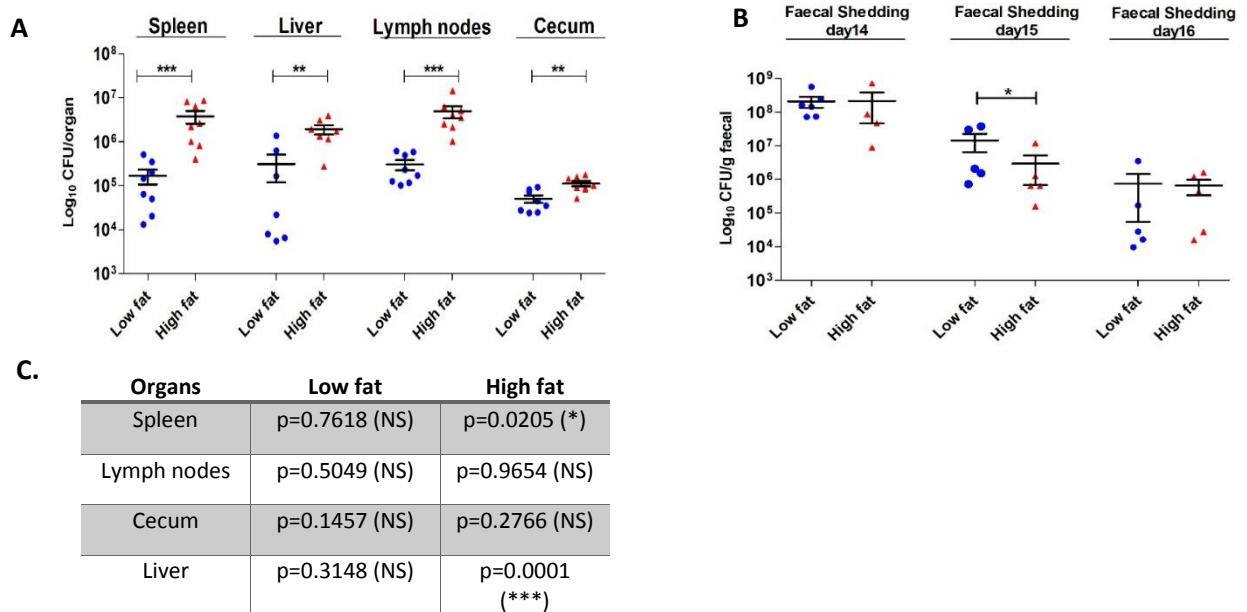
Title	Short-term consumption of a high-fat diet increases host susceptibility to <i>Listeria monocytogenes</i> infection
Authors	Las Heras, Vanessa;Clooney, Adam G.;Ryan, Feargal J.;Cabrera-Rubio, Raul;Casey, Pat G.;Hueston, Cara M.;Pinheiro, Jorge;Rudkin, Justine K.;Melgar, Silvia;Cotter, Paul D.;Hill, Colin;Gahan, Cormac G.
Publication date	2019
Original Citation	Las Heras, V., Clooney, A. G., Ryan, F. J., Cabrera-Rubio, R., Casey, P. G., Hueston, C. M., Pinheiro, J., Rudkin, J. K., Melgar, S., Cotter, P. D., Hill, C. and Gahan, C. G. M. (2019) 'Short-term consumption of a high-fat diet increases host susceptibility to <i>Listeria monocytogenes</i> infection', <i>Microbiome</i> , 7(1) (12pp). DOI: 10.1186/s40168-019-0621-x
Type of publication	Article (peer-reviewed)
Link to publisher's version	<a href="https://microbiomejournal.biomedcentral.com/articles/10.1186/s40168-019-0621-x">https://microbiomejournal.biomedcentral.com/articles/10.1186/s40168-019-0621-x</a> - 10.1186/s40168-019-0621-x
Rights	© The Author(s). 2019. © The Author(s). 2019Open AccessThis article is distributed under the terms of the Creative Commons Attribution 4.0International License ( <a href="http://creativecommons.org/licenses/by/4.0/">http://creativecommons.org/licenses/by/4.0/</a> ), which permits unrestricted use, distribution, and reproduction in any medium, provided you give appropriate credit to the original author(s) and the source, provide a link to the Creative Commons license, and indicate if changes were made. The Creative Commons Public Domain Dedication waiver( <a href="http://creativecommons.org/publicdomain/zero/1.0/">http://creativecommons.org/publicdomain/zero/1.0/</a> ) applies to the data made available in this article, unless otherwise stated. - <a href="https://creativecommons.org/licenses/by/4.0/">https://creativecommons.org/licenses/by/4.0/</a>
Download date	2024-04-24 12:33:25
Item downloaded from	<a href="https://hdl.handle.net/10468/7680">https://hdl.handle.net/10468/7680</a>



# UCC

**University College Cork, Ireland**  
Coláiste na hOllscoile Corcaigh

## Supplemental data, Las Heras et al Fig S2.



**Figure S2. Increased dietary fat from animal source increases host susceptibility to oral infection with *Listeria monocytogenes* EDGe<sup>m</sup> pIKM2.** IG inoculation of seven-week-old female C57BL/6 mice (ENVIGO, UK) was repeated in a separate duplicate experiment (n=8) using a 200µl inoculum comprising  $2.8 \times 10^9$  CFU *L. monocytogenes* EGDm::*pIMK2lux*, a bioluminescent murinized strain. After infection (three days), the faecal pellets were collected daily and plated for CFU to determine shedding of *L. monocytogenes*. **A.** Bacterial burden of spleen, liver, lymph nodes and of C57BL/6 mice fed with diets varying in percentage of fat content from the total caloric intake (n=8, standard deviation from the mean, statistical analysis was conducted using Mann Whitney Nonparametric Test). **B.** *Listeria monocytogenes* bacterial shedding per gram of faecal sample in each day after infection. **C.** Comparison between the two trials (EGDe<sup>m</sup> and pIKM2). Mann Whitney Nonparametric Test.