

Title	The infant-derived bifidobacterium bifidum Strain CNCM I-4319 strengthens gut functionality
Authors	Martin, Rebeca;Bottacini, Francesca;Egan, Muireann;Chamignon, Celia;Tondereau, Valérie;Moriez, Raphaël;Knol, Jan;Langella, Philippe;Eutamene, Hélène;Smokvina, Tamara;van Sinderen, Douwe
Publication date	2020
Original Citation	Martín, R., Bottacini, F., Egan, M., Chamignon, C., Tondereau, V., Moriez, R., Knol, J., Langella, P., Eutamene, H., Smokvina, T. and Van Sinderen, D. (2020) 'The infant-derived bifidobacterium bifidum strain cncm i-4319 strengthens gut functionality', <i>Microorganisms</i> , 8(9), 1313 (19pp). doi: 10.3390/microorganisms8091313
Type of publication	Article (peer-reviewed);journal-article
Link to publisher's version	10.3390/microorganisms8091313
Rights	© 2020 by the authors. Licensee MDPI, Basel, Switzerland. This article is an open access article distributed under the terms and conditions of the Creative Commons Attribution (CC BY) license (http://creativecommons.org/licenses/by/4.0/). - https://creativecommons.org/licenses/by/4.0/
Download date	2025-04-25 23:29:02
Item downloaded from	https://hdl.handle.net/10468/15269



UCC

University College Cork, Ireland
Coláiste na hOllscoile Corcaigh



Article

The Infant-Derived *Bifidobacterium bifidum* Strain CNCM I-4319 Strengthens Gut Functionality

Rebeca Martín ^{1,†}, Francesca Bottacini ^{2,†}, Muireann Egan ², Celia Chamignon ¹,
Valérie Tondereau ³, Raphaël Moriez ⁴, Jan Knol ^{5,6}, Philippe Langella ¹, Hélène Eutamene ³,
Tamara Smokvina ^{4,*} and Douwe van Sinderen ^{1,7,*}

¹ Commensal and Probiotics-Host Interactions Laboratory, Micalis Institute, INRA, AgroParisTech, Université Paris-Saclay, 91190 Jouy-en-Josas, France; rebeca.martin-rosique@inrae.fr (R.M.); celia.chamignon@inrae.fr (C.C.); philippe.langella@inrae.fr (P.L.)

² APC Microbiome Ireland, University College Cork, Cork T12 K8AF, Ireland; f.bottacini@uic.ie (F.B.); muireann.egan@uic.ie (M.E.)

³ Neurogastroenterology & Nutrition Group, Toxalim INRAE, Université de Toulouse, ENVT, INP-Purpan, 31058 Toulouse, France; valerie.tondereau@inrae.fr (V.T.); helene.eutamene@inra.fr (H.E.)

⁴ Danone Nutricia Research, 91767 Palaiseau, France; raphael.moriez@danone.com

⁵ Danone Nutricia Research, 3584 CT Utrecht, The Netherlands; jan.knol@danone.com

⁶ Laboratory of Microbiology, Wageningen University, 6708 PB Wageningen, The Netherlands

⁷ School of Microbiology, University College Cork, Cork T12 K8AF, Ireland

* Correspondence: tamara.smokvina@danone.com (T.S.); d.vansinderen@uic.ie (D.v.S.)

† Joint first author.

Supplementary Material

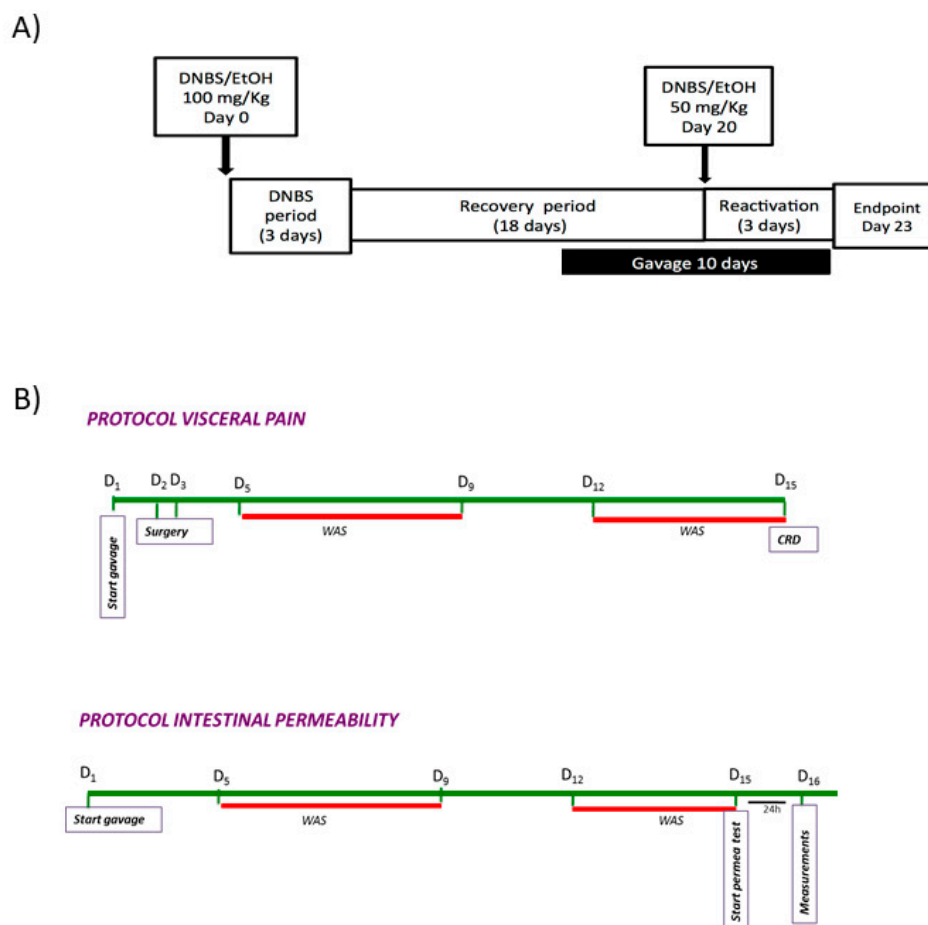


Figure S1. LGI and WAS models. Time course protocols employed for LGI (A) and WAS (B) experiments. See Materials and Methods section for details on these protocols.

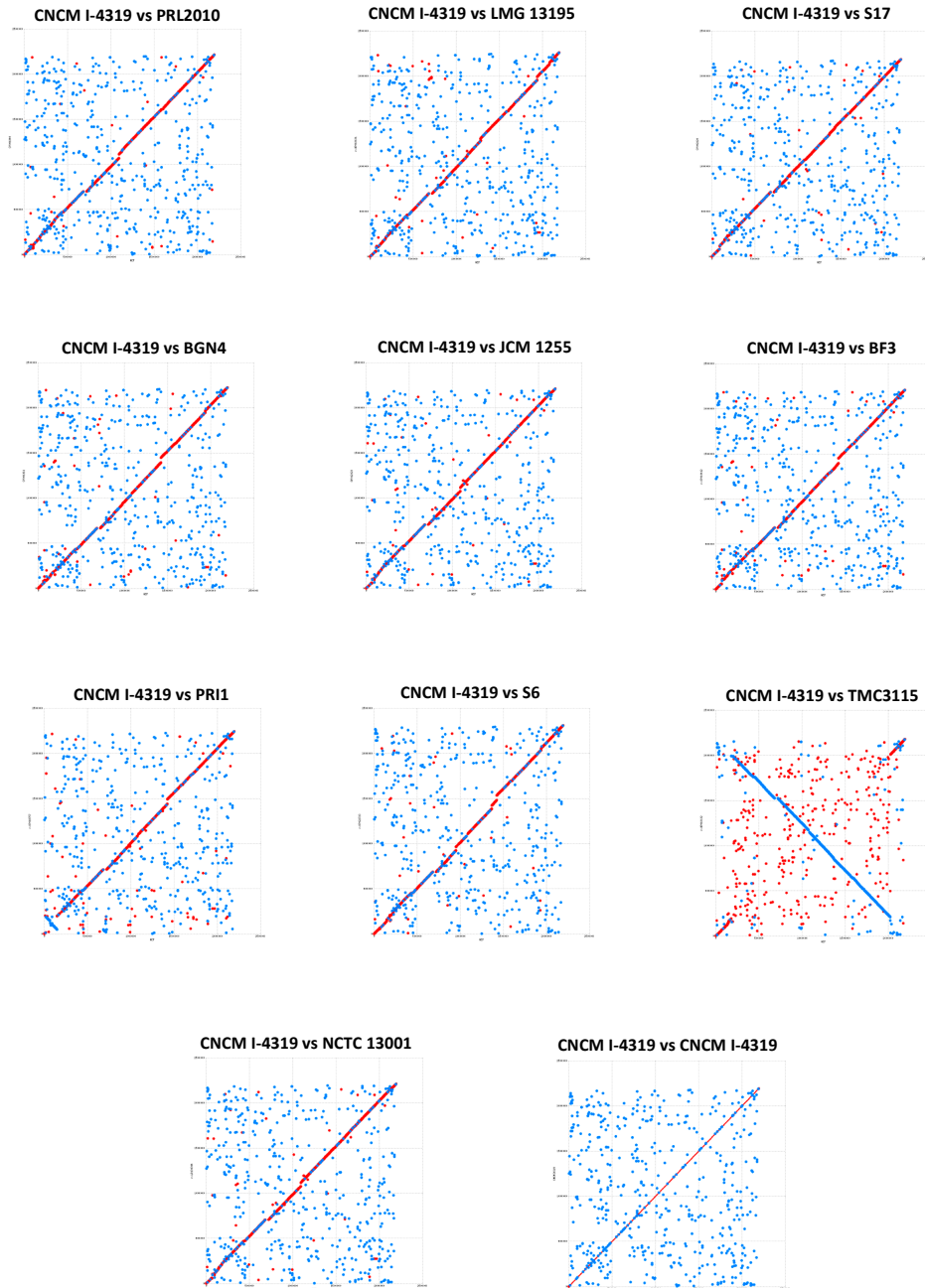


Figure S2. Dotplot alignments of fully sequenced *B. bifidum* genomes. Dotplot alignment showing the sequence synteny of *B. bifidum* CNCM I-4319 and 10 publicly available and fully sequenced *B. bifidum* genomes.