

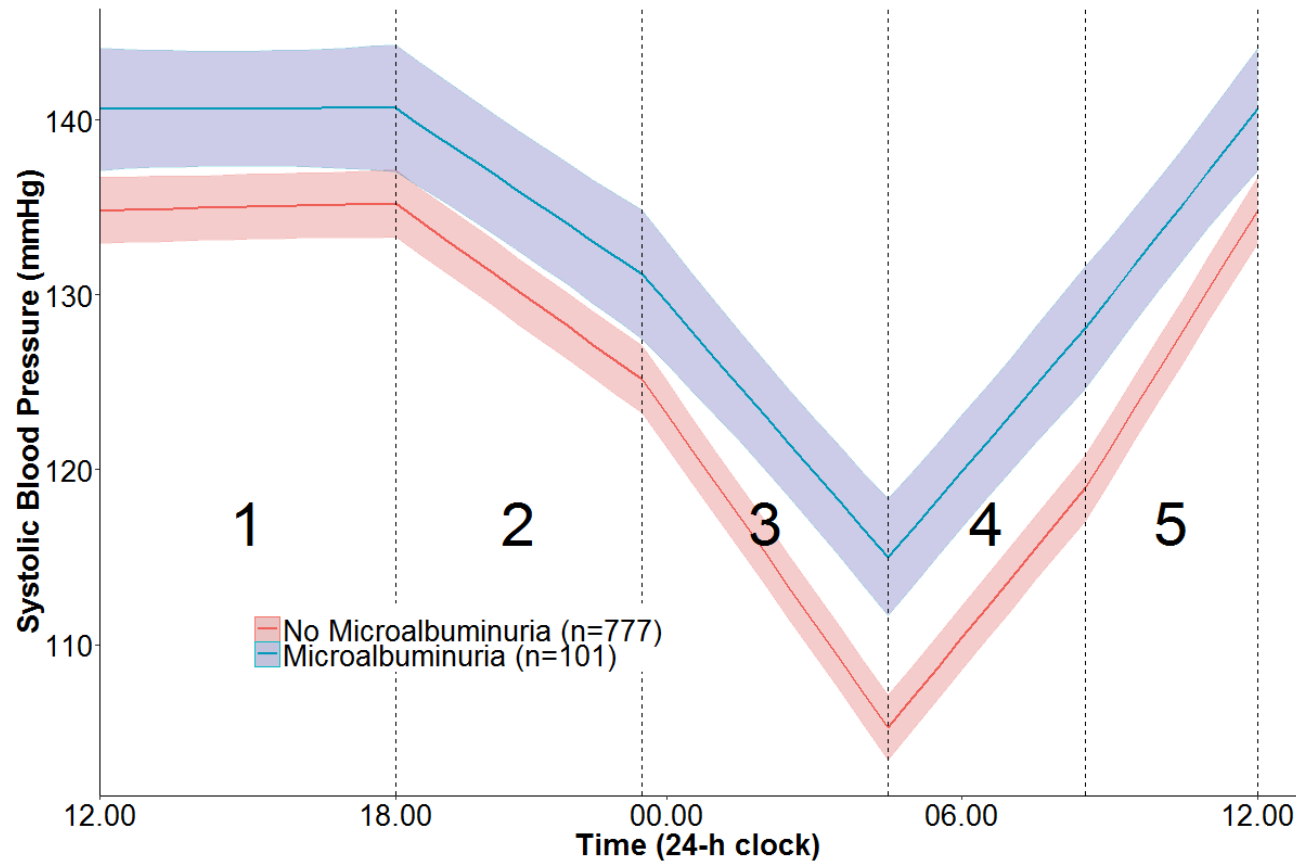
Title	Exploring diurnal variation using piecewise linear splines: an example using blood pressure
Authors	Madden, Jamie M.;Li, Xia;Kearney, Patricia M.;Tilling, Kate;Fitzgerald, Anthony P.
Publication date	2017-02-02
Original Citation	Madden, J. M., Li, X., Kearney, P. M., Tilling, K. and Fitzgerald, A. P. (2017) 'Exploring diurnal variation using piecewise linear splines: an example using blood pressure', Emerging Themes in Epidemiology, 14(1), pp. 1-11. doi:10.1186/s12982-017-0055-5
Type of publication	Article (peer-reviewed)
Link to publisher's version	10.1186/s12982-017-0055-5
Rights	© 2017, the Authors. This article is distributed under the terms of the Creative Commons Attribution 4.0 International License (http://creativecommons.org/licenses/by/4.0/), which permits unrestricted use, distribution, and reproduction in any medium, provided you give appropriate credit to the original author(s) and the source, provide a link to the Creative Commons license, and indicate if changes were made. The Creative Commons Public Domain Dedication waiver (http://creativecommons.org/publicdomain/zero/1.0/) applies to the data made available in this article, unless otherwise stated. - http://creativecommons.org/licenses/by/4.0/
Download date	2025-04-25 21:51:19
Item downloaded from	https://hdl.handle.net/10468/3752



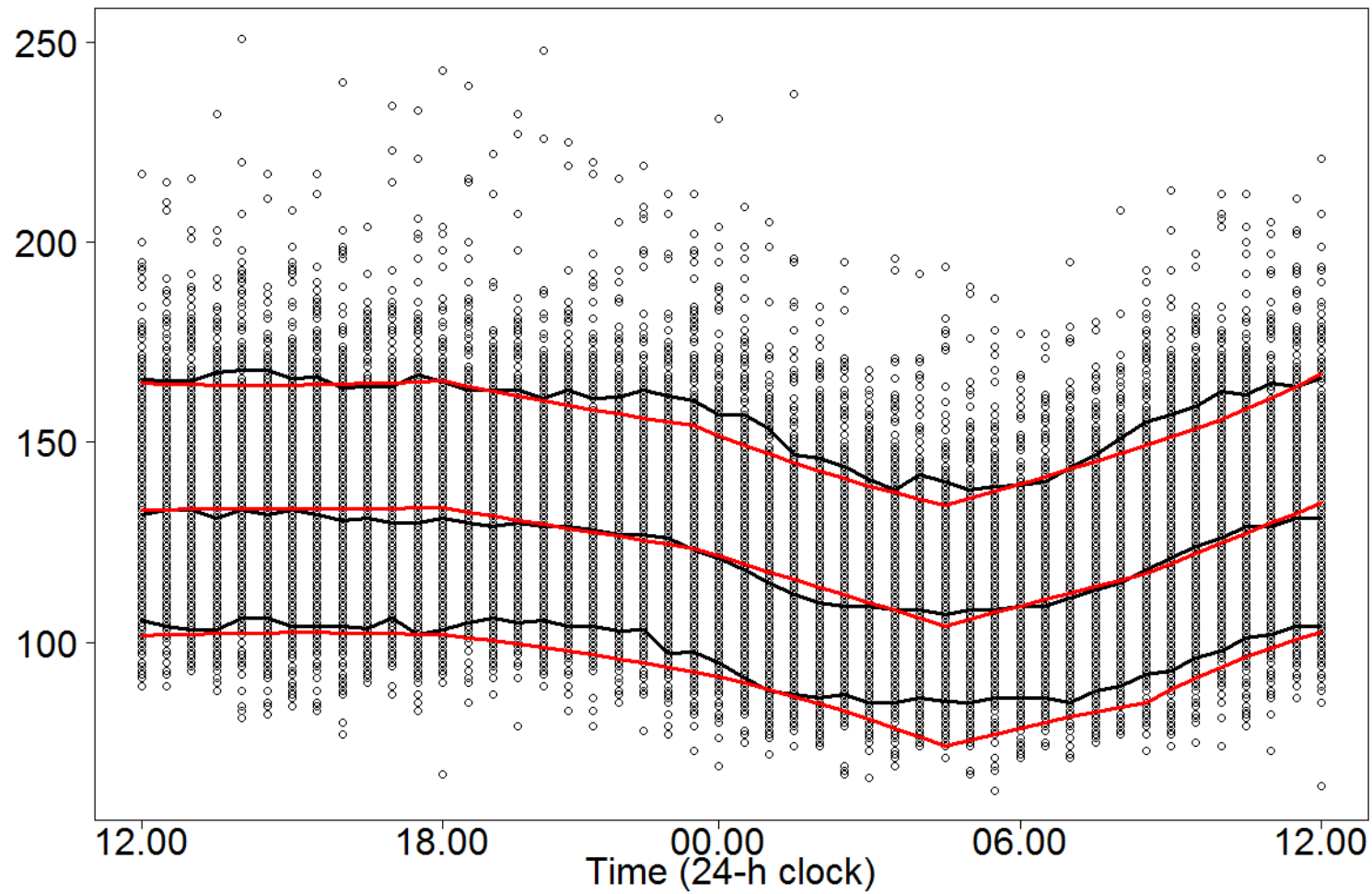
UCC

University College Cork, Ireland
Coláiste na hOllscoile Corcaigh

Supplementary content



Predicted average (95% CI) piecewise linear trajectory of those with/without presence of microalbuminuria adjusted for age, sex, BMI and including an interaction of the spline terms with microalbuminuria using a linear mixed-effects model (Model 3). Each linear spline represents the rate of BP increase or decrease (slope) for that segment and has been given a corresponding number which is referred to in Table 2.



VPC (visual predictive check) plot. Black lines represent median of observed data with 90% interquartile range of observations. Red line is predicted mean along with 90% prediction interval.