

Title	Practice Links [Issue 48, June 2012]
Publication date	2012-06
Original Citation	Burns, Kenneth (ed.) 2012, June, "Practice Links", [Online]. <a href="http://www.ucc.ie/en/appsoc/aboutus/activities/pl/">http://www.ucc.ie/en/appsoc/aboutus/activities/pl/</a>
Type of publication	Other
Link to publisher's version	<a href="http://www.ucc.ie/en/appsoc/aboutus/activities/pl/">http://www.ucc.ie/en/appsoc/aboutus/activities/pl/</a>
Download date	2025-05-21 02:09:32
Item downloaded from	<a href="https://hdl.handle.net/10468/1149">https://hdl.handle.net/10468/1149</a>



**UCC**

**University College Cork, Ireland**  
Coláiste na hOllscoile Corcaigh

# Practice Links

Issue 48, June 2012

## Inside

**Continuing Professional Development**

Pgs. 2-12

**New publications and policy reports**

Pgs. 8-11

**New publications and policy reports**

Pgs. 13-16

**Practice signposts: data sources to support your practice**

Pgs. 17-18

**Research Briefs - Systematic Reviews**

Pgs. 19-20

**Web Links and Electronic Publications**

Pg. 21

**Podcasts**

Pgs. 22-23

**About Practice Links/Submissions/Subscriptions/Contributors**

Pg. 24

**Next edition: October 2012**



# Continuing Professional Development

## **The 2nd Maynooth International Youth Studies Conference National University of Ireland, Maynooth "Representing Young People: Voice, Image, Practice, Power"**

Tuesday 26th – Friday 29th June 2012

Conference website and registration at: <http://appliedsocialstudies.nuim.ie/>  
Maynooth is one hour from Dublin airport: <http://www.dublinairport.com/home.aspx>

Hosted by the Department of Applied Social Studies, NUI Maynooth, in association with the Research Committee on Youth of the International Sociological Association (RC34) and Youth Studies Ireland.

## **'All Our Children: positive experiences, successful outcomes for looked after and other vulnerable children'**

EUSARF 2012 | 4th to 7th September 2012 | Thistle Hotel, Glasgow. Incorporating the 10th International Looking After Children Conference

This conference aims to bring together researchers, practitioners, managers and policy makers, to address topical issues facing vulnerable children and young people, and their families. The programme will highlight three overarching themes: perspectives of children and young people; organisational change and effective intervention.

The call for papers will be available shortly through [www.eusarf2012.org](http://www.eusarf2012.org) <<http://www.eusarf2012.org>> and we will be accepting abstract submissions from the 31st January. Please continue to check our website for updates and email us at [eusarf2012@strath.ac.uk](mailto:eusarf2012@strath.ac.uk) if you have any further enquiries.

If you have a booking enquiry or would like further information, please call us on 0141 950 3683 or email us at [celcis@strath.ac.uk](mailto:celcis@strath.ac.uk). Please continue to visit our website for regular updates and information on our services at [www.celcis.org](http://www.celcis.org) <<http://www.celcis.org>> . You can also Follow us on Twitter <<http://twitter.com/CELCIStweets>> and Join us on Facebook <<http://www.facebook.com/CELCIS>>

## **The 3rd International Conference on Survivors of Rape (call for papers)**

This two day conference, will be held on November 9th and 10th 2012, with a seminar day taking place on Thursday the 8th, in the West of Ireland city of Galway. Visit [www.icsor.org](http://www.icsor.org) for more information. With ICSOR 2012, we hope to build on the excellence of the previous conferences, which dealt with the treatment of survivors of rape, the enhancement of our understanding of the impact of rape and to improve the quality of multidisciplinary care for survivors of rape. The call for papers opens on 30th January, visit ICSOR 2012 ([www.icsor.org](http://www.icsor.org)) for more information. Closing date for abstracts is the 20th April 2012

# Continuing Professional Development

## COURTROOM SKILLS TRAINING

There are many circumstances in which social and care workers are called to give evidence in legal forums and the prospect of being a witness in a legal case or process can be daunting. Learning how to present evidence and responding to questions under cross examination in a legal forum is a key skill for any person required to appear as a witness. Delivering your evidence requires an understanding and familiarity of the processes involved in the different types of legal forum.

Appearing in the witness box can be a challenging experience for a witness, particularly when the process of cross examination, which is a hallmark of our adversarial system, can call into question your own competence and challenge the veracity of the evidence that you deliver. Anticipating and dealing with effective cross-examination to ensure that the evidence that you deliver is not unwittingly undermined or misinterpreted is a key requirement for any expert witness.

Social workers who are required to give evidence in a legal forum also face additional challenges that do not apply to other witnesses. The content of the evidence is often sensitive in nature and can be central to the outcome of the proceedings involving the care and custody of children. While proceedings can often be in camera, the challenges involved in delivering clear and effective evidence remain. To address these challenges PAI is presenting a highly practical seminar which will examine all aspects impacting on the performance of expert witnesses from the health care sector, whether in a civil or criminal court.

This day-long seminar will examine the following areas:

- An outline of the different types of legal forums and the different rules of evidence that apply to each
  - Details of how the adversarial system operates
- Preparing for giving evidence and delivering evidence with clarity
  - Giving evidence under oath
- Cross examination and cross questioning – the rules and techniques that are used by lawyers.
  - The use of documents, notes and reports when giving evidence – what is permitted?
  - The in camera rule – when does it apply and what does it mean?
- Role play – giving evidence and being cross examined on a case study

This seminar will be of keen interest to social workers and childcare professionals. You will benefit from the experiences of others in the health care sector. There is informal networking time during breaks and the lunch provided afterwards.

<http://www.publicaffairsireland.com/events/728-courtroom-skills-training>

Full-day training seminar: 9.00am – 3.00pm, 21 June 2012 25 Mountjoy Square East, Dublin 1

## Issues in working with the impact of sexual violence and other Trauma

### **A 4 day training programme for staff working with Refugees and Asylum Seekers who have experienced sexual violence and other trauma and with their children (Dublin Rape Crisis Centre)**

Wednesday 13th and Thursday 14th June, Wednesday 27th and Thursday 28th June, 2012. Venue: The Sheraton Hotel, Athlone

With the support of funding from the European Refugee Fund, Dublin Rape Crisis Centre offers a 4 day training programme for staff working in supportive roles with clients who are asylum seekers and refugees and with their children. This training programme will focus on offering support to adult clients and on supporting children of parents who have experienced trauma. Further details, application form and other training opportunities: <http://www.drcc.ie/training-and-development/schedule-2011/>

# Continuing Professional Development

## PRODUCING LEGAL REPORTS

Social workers and child care professionals are required to produce statements or reports that may later be analysed in court proceedings.

These reports often contain key written evidence and are central to the outcome of proceedings. It is therefore vital to ensure these reports are clear, comprehensive and legally robust avoiding ambiguities and confusion. It is also important that the reports are mindful of the need to protect issues concerning personal privacy, the protection of confidential information and address issues concerning third party information which may have led to intervention by the State, particularly in relation to the care, welfare and custody of children.

There is a defined skill to producing a clear, unambiguous and legally robust report which may form the basis for the provision of expert evidence in a court or other hearing. Understanding how a report will be read and used can often assist in helping to draft a report that accurately performs its proper function.

One major challenge facing social workers is writing comprehensive, legally robust reports in situations where it is difficult to determine facts. This may arise where social workers are dealing with people within society from different ethnic or cultural backgrounds. It may be difficult to gain a comprehensive view of the situation due to unfamiliar cultural practices and language barriers. This seminar will examine best practice in producing reports in this situation, how to address cultural disparities in a report and how to distinguish facts from inferences and opinions.

PAI is presenting a highly practical seminar which will examine all aspects of writing reports for a legal forum. Practical tips will be given by experienced legal practitioners to ensure that reports are legally robust. They will address various legal issues and provide guidelines for producing reports in accordance with the guidelines and principles of the relevant Act. This seminar will examine the following areas:

- Best practice in styling and formatting reports for Court
- Examining the source and weight of evidence to be included and distinguishing between facts, inferences and opinions
  - Amending and editing the report
- Complying with important legal obligations on privacy, data protection and confidential information
  - Addressing cultural disparities in a report

This seminar will be of keen interest to social workers and childcare professionals. There will be opportunities for discussion and questions, as well as interaction with other delegates in the health service. There is informal networking time during breaks and the lunch provided afterwards. <http://www.publicaffairsireland.com/events/729-producing-legal-reports>

## **60th Annual Irish Gerontology Society Scientific Meeting Friday 14th & Saturday 15th September 2012 Brookfield Health Sciences Complex, UCC – Cork**

The 60th annual Irish Gerontology Society Conference will take place in the Brookfield Health Sciences Complex, UCC on the 14th & 15th September 2012. We would like to thank the Citywide Department of Geriatric Medicine and UCC for kindly hosting this event.

The conference will have a varied and interesting programme for delegates. This will be followed by an enjoyable conference dinner giving delegates the opportunity to meet up with old friends in a relaxed environment. We encourage you to book early as there are a limited number of places.

<http://irishgerontology.com/events/gs-scientific-meeting-september-2012/>

# Continuing Professional Development

## FIRST CONFERENCE ANNOUNCEMENT AND CALL FOR WORKSHOP PRESENTATIONS

CATHERINE MCAULEY SCHOOL OF NURSING AND MIDWIFERY & THE SCHOOL OF APPLIED SOCIAL STUDIES, UNIVERSITY COLLEGE CORK, IRELAND IN ASSOCIATION WITH CRITICAL VOICES NETWORK IRELAND

“CRITICAL PERSPECTIVES AND CREATIVE RESPONSES TO EXPERIENCES OF TRAUMA AND DISTRESS”

14 AND 15 NOVEMBER 2012, UNIVERSITY COLLEGE CORK, IRELAND

This conference, now in its 4<sup>th</sup> year, has as its focus critical perspectives and creative responses to experiences of trauma and distress. The conference offers opportunities to consider:

- the experiences of trauma and distress
- new ways of understanding trauma and distress, beyond bio psychiatry
- creative approaches to engaging with and responding to trauma and distress

This conference is unique as it is free for all participants and involves people from diverse backgrounds (self-experience, survivors, professionals, academics, carers) presenting, discussing and debating critical and creative perspectives on and beyond the dominant bio-medical approach. The 2010 conference saw the launch of the Critical Voices Network Ireland (CVNI), a network of people interested in considering and developing responses to human distress, which are creative, enabling, respectful and firmly grounded in human rights. The conference will include an open forum to discuss the on-going work of the CVNI.

Confirmed Keynote Speakers:

Jacqui Dillon (who will give the opening address) Writer, national Chair of the Hearing Voices Network, Director of Intervoice, Honorary Lecturer in Clinical Psychology, University of East London, voice hearer, author of several book chapters and papers, co-editor of *Living with Voices and Demedicalising Misery: Psychiatry, Psychology and the Human Condition*. England.

Richard Patterson Advocate, Activist, IT Sligo Graduate And Holder Of The 2008 Citizen's Information Board Medal For The Best Overall Student On The Higher Certificate In Arts In Advocacy, Past Tool Designer, Past Outdoor Educator, Psychiatric Services Survivor And Alleged 'Manic-Depressive'. Ireland.

Phil Thomas Writer, academic and former consultant psychiatrist; founder member of the Critical Psychiatry Network; worked closely with experts by experience and survivors of mental health services nationally and internationally, co-author, with Pat Bracken, of *Post Psychiatry* and similar writings. Currently writing a book on critical psychiatry. England.

Eleanor Longden: Voice hearer, writer and researcher, co-ordinator of the Intervoice Scientific Committee. England.

Dirk Corstens Social psychiatrist and psychotherapist, Chair of the Intervoice Board. Maastricht, the Netherlands.

John O'Donoghue Writer and poet. Author of *Brunch Poems* and *Sectioned: A Life Interrupted*, which was awarded Mind Book Of The Year 2010. England.

### Call for Workshop Presentations:

Please submit an abstract (in Word - 250 words max) broadly related to the conference focus, outlining the aims of and intentions for the workshop presentation. Please also submit a brief bio (in Word - 150 words max) with your abstract. Workshop presentations are of 45 minutes' duration. The deadline for abstract submission is 21 September 2012. Please email abstracts to [lsapouna@ucc.ie](mailto:lsapouna@ucc.ie). Queries to [h.gijbels@ucc.ie](mailto:h.gijbels@ucc.ie) or [lsapouna@ucc.ie](mailto:lsapouna@ucc.ie). We look forward to hear from you.

The Conference organisers are Harry Gijbels, Catherine McAuley School of Nursing and Midwifery, and Lydia Sapouna, School of Applied Social Studies, University College Cork, Ireland.

# Continuing Professional Development

## Training for Social Workers/Potential Practice Teachers this coming September 2012 in UCC

Ruth Murray, Fieldwork Coordinator in the School of Applied Social Studies, is organising the annual two day Fieldwork Workshop Training in UCC on September 13<sup>th</sup> and 14<sup>th</sup> September. It is being run by a number of staff within the School of Applied Social Studies. It is aimed at social workers who may be considering supervising students in the future or social workers who have not taken students for a while and wish to have their skills refreshed. The two days are free. Topics being covered are 'Supervision and Continuing Professional Development', 'Assessing Student Proficiencies', 'Practice Teachers' Preparation for Placement', and 'Responding to Students' Different Learning Styles', amongst other topics. There is an expectation that those attending will be available to take a student In January or September 2013.

Full attendance at the two days merits 8 CPD points by the IASW. Closing date 31/7/2012. Places will be limited to 30 so early booking is advised.

If interested phone Ruth at 021 4903954 for a brochure and/or application form or email her at [r.murray@ucc.ie](mailto:r.murray@ucc.ie)

If Ruth is unavailable, please phone Jackie Connolly for same at 021 4903937 or email Jackie at: [j.connolly@ucc.ie](mailto:j.connolly@ucc.ie)

## NIASW / IASW Adult Mental Health Research Conference: 'Suicide Prevention in Context'

Venue : Iontas Resource Centre, Castleblayney, Co. Monaghan, 18<sup>th</sup> October 2012

### CALL FOR CONFERENCE PAPERS - WORKSHOP PRESENTATIONS

The conference is a joint venture between IASW and NIASW. The conference organising committee includes practitioners, managers and academics involved in Mental Health Social Work in Northern Ireland and the Republic of Ireland.

The aim of the conference will be to provide a forum for social workers to share recent innovations in practice. It will also provide an opportunity to review current developments taking place in legislation and policy in both parts of Ireland.

We invite papers and workshop presentations from service users, practitioners, managers and academics. If you wish to make a contribution to the conference, you should forward an abstract of not more than 300 words outlining the proposed content of your paper or workshop presentation.

A review panel will consider all abstracts submitted and select those which best address the conference aims and objectives.

Abstracts should be forwarded to Sharon at [sharonmcgeown@btinternet.com](mailto:sharonmcgeown@btinternet.com) by 31<sup>st</sup> May 2012.

## 3rd International Public Health & Palliative Care Conference

Limerick, 25<sup>th</sup> - 27<sup>th</sup> April 2013 on the theme of: Death, Dying, Loss & Care: Social Experiences or Medical Events?

A public health approach to palliative care places the community at the centre of supporting those affected by death, dying, loss and care. The conference website has further details, flyer and booking details: [www.publichealthpalliativecare.org](http://www.publichealthpalliativecare.org)

## "Early notice - ISPCAN (International Society for the Prevention of Child Abuse and Neglect) Conference to be held in Dublin 15th - 18th September 2013

The Council of ISPCAN has voted to hold its 2013 European Congress in Dublin. ISPCAN was last in Ireland in 1996 when its International Congress was held in UCD. The 2013 conference bid was chaired by Dr. Kevin Lalor (DIT) and the committee is made up of colleagues from TCD, QUB, 1 in 4, and Positive Care Ireland. Further details to follow. Save the date!"

# Continuing Professional Development

## INTER-UNIVERSITY CENTRE - Dubrovnik

The Inter-University Centre Dubrovnik ([IUC](#)) is an independent international institution for advanced studies. Its objective is to encourage, promote and implement cooperation among students and scholars through projects, study programmes, courses and conferences across a wide range of academic concerns. Participants come from universities and other scientific institutions worldwide. Founded in 1971, at the height of the Cold War, the IUC became an important venue for the exchange of ideas across various divides, between East and West, North and South. Based in Dubrovnik, formerly a self-governing Mediterranean city-state at the crossroads of varying cultural and political concerns, the IUC is building on its achievements and traditions in facing new challenges in a rapidly changing global environment. Maintaining high standards of free and independent scholarship, the IUC is dedicated to network building for peaceful co-existence and pluralism regionally as well as internationally. Over the years, more than 65,000 scholars and students have contributed to the work of the IUC. More on: [www.IUC.hr](http://www.IUC.hr).

### Social Work and IUC

#### Forthcoming courses

#### SCHEDULE OF THE SCHOOL OF SOCIAL WORK THEORY AND PRACTICE FOR 2012

3.6. – 9. 6. 2012

- [Social Work Theories and Methodologies](#) - Comparing social work approaches across countries
- [Social Work with Children and Youth](#) - Violence and abuse: prevention and treatment

10.6. – 16.6 2012

- [Social Work with Youth in Conflict with Law](#) - Gender, identity and transgression
  - [Social Work and Spirituality](#) - Utopia for better social work
  - [Contemporary Issues in Social Work: Working with old age](#)

17.6. – 23.6. 2012

- [Developing Neighbourhood and Community Support Systems](#) - Can global be meaningfully local and political? Social work, community development and the Global Agenda
- [Social Work and Social Policies](#) - Can global be meaningfully local and political? Social work, community development and the Global Agenda (parallel)
- [Social Work and Deinstitutionalisation](#) - Homelessness and housing

More information on these courses (which only cost €75 each) can be found at: <http://www.dialogueinpraxis.net/index.php>



# Continuing Professional Development

## **M.Soc.Sc in Voluntary and Community Sector Management at University College Cork**

A Masters degree in Voluntary and Community Sector Management is being offered by University College Cork to voluntary and community sector workers who have experience of project management and co-ordination and who would like to improve their knowledge and skills base. The course may also be of interest to public sector workers who work closely with the voluntary and community sector

The course is taught by the School of Applied Social Studies, in association with seven other Departments within U.C.C. Management and Marketing, Food, Business and Development, Accounting and Finance, Business Information Systems, Government, Economics and Law. It is taught one day a week (Wednesday) over two years and includes a four day Easter School.

Further information on this programme is available on our online prospectus at [www.ucc.ie/en/CKE75](http://www.ucc.ie/en/CKE75), or by contacting Dr. Féilim Ó hAdhmaill, Dept. of Applied Social Studies, on 021 490 2616 or email [f.ohadhmaill@ucc.ie](mailto:f.ohadhmaill@ucc.ie)

Applications can be made online through the Postgraduate Admissions Centre at <http://www.pac.ie> . Final closing date: Friday June 15th 2012.

A number of scholarships are available for people wishing to undertake a Masters degree in the College of Arts, Celtic Studies and Social Sciences (CACSSS). Application forms, terms and conditions, and further information can be accessed from the CACSSS Postgraduate Programmes website <http://www.ucc.ie/en/cacsss/postgraddegrees>.

## **Applications are invited for the Postgraduate Diploma in Advanced Fieldwork Practice and Supervision (Social Work) at University College Cork**

The Postgraduate Diploma in Advanced Fieldwork Practice and Supervision (Social Work) was set up in 2001 and it represents a very import course in terms of the School's mission of creating and sustaining community outreach and partnerships within the context of professional development. The course provides social work practitioners with an important opportunity to engage in a professionally accredited, post qualifying course in Practice Teaching and Professional Supervision. Specifically, the course is designed to equip participants with the necessary knowledge and skills to become competent Supervisors and Practice Teachers. The establishment of CORU, the statutory regulation body for social work, heralds a new era for social work. We are in an age where participating in CPD and Post qualifying social work education is gathering momentum. This course responds to an identified need for the provision of more dedicated training and development opportunities for social workers.

To Apply: - Contact Ms Karen Hennessy, Centre for Adult and Continuing Education, 'The Laurels' Western Road, University College Cork, Cork.

E mail:- Karen Hennessy [k.hennessy@ucc.ie](mailto:k.hennessy@ucc.ie) or Phone:- 021-4904737

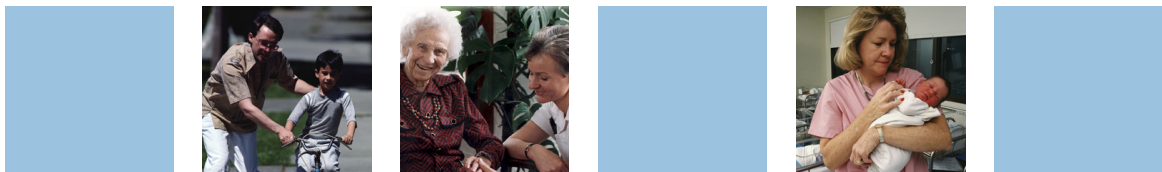
Applications must be returned by 20<sup>th</sup> April 2012

# Continuing Professional Development



**ADVANCE NOTICE**  
2nd International Symposium on:

## Decisions, Assessment, Risk and Evidence in Social Work



**Monday 2nd & Tuesday 3rd July 2012**  
**Templeton Hotel, Templepatrick, Northern Ireland**  
(convenient to Belfast International Airport)

The first Symposium in 2010 attracted over 70 researchers, educators, policy makers, managers and senior practitioners to share current developments and to promote collaborative research, service development and teaching initiatives to improve professional knowledge and skills for the ultimate benefit of clients and families. This second Symposium is designed to build on that event.

**Plenary Speakers:**

Professor Hazel Kemshall, De Montfort University Leicester who has published widely on risk assessment and management with adult client groups including criminal justice.

Professor Aron Shlonsky, University of Toronto who has published widely on risk assessment and predicting harm in child welfare, and on evidence based practice in social work.

Call for abstracts is now open at <http://www.socsci.ulster.ac.uk/irss/dare2012/abstracts.html>

Further information will be added to our website over the coming months:

**[www.socsci.ulster.ac.uk/irss/dare2012](http://www.socsci.ulster.ac.uk/irss/dare2012)**

If you would like your name to be added to the list for publicity, email:

**Mrs Sharon Lucas at: [dare@ulster.ac.uk](mailto:dare@ulster.ac.uk)**

**Registration now open:**

**<http://www.socsci.ulster.ac.uk/irss/dare2012/>**

# Continuing Professional Development



3rd International  
**PUBLIC HEALTH  
& PALLIATIVE CARE  
CONFERENCE**  
2013

25-27 April 2013  
Strand Hotel  
LIMERICK  
IRELAND

## Death, dying, **LOSS & CARE:**

Social Experiences or Medical Events?

Photo: Jean Louis Potier. Design: Raindesign.com

### CALL FOR PAPERS

↘  
Engaging  
COMMUNITIES

↘  
Education & research  
IN ACTION

↘  
Models of Care  
& PRACTICE

↘  
Influencing  
POLICY

We are now inviting abstract submissions for oral and poster presentations or facilitated workshops relating to the conference theme - Death, Dying, Loss and Care: Social Experiences or Medical Events?

**Submissions should fall into one of the above four thematic areas.**

We encourage submissions from all over the world.

A bursary scheme is available to support attendance from potential delegates presenting from low/middle income countries. Details of the scheme are included on the website.

**Who should attend?**

The conference will be attended by health and social care professionals from a broad spectrum of countries as well as members of local communities within Ireland to discuss and evaluate the ongoing value and contribution of a public health approach to palliative care practice.

**Activities...**

The conference will divide its activities between invited keynote speakers, panel sessions and ample discussion time. This is an international, interdisciplinary conference that welcomes all professionals with an interest in public health approaches to palliative care.

**Deadline for abstract submission:** 31 July 2012. Maximum 250 words. The abstract submission form can be downloaded from [PublicHealthPalliativeCare.org/Call](http://PublicHealthPalliativeCare.org/Call).



#### LIMERICK, IRELAND

The country's third largest city is located on one of Ireland's most picturesque rivers, the Shannon.

Conquered by Vikings in the ninth century, this bustling modern city has a rich medieval past, which echoes in its streets.

As well as the renowned Hunt Museum Limerick boasts a medieval precinct with 800-year-old King John's Castle.

A vibrant destination with excellent shops, restaurants and indulgent accommodation, it's a great base for exploring the surrounding sights.

**See our website for visitor information links.**

[www.PublicHealthPalliativeCare.org](http://www.PublicHealthPalliativeCare.org)

[info@PublicHealthPalliativeCare.org](mailto:info@PublicHealthPalliativeCare.org)



Milford Care Centre in cooperation with the University of Limerick and The Irish Hospice Foundation.



VENUE

**CIT** CORK SCHOOL OF MUSIC

The Irish Performing Arts Festival presents

# Arts **for** Living Conference

CREATING PARTNERSHIPS

on Wednesday 27th June and Thursday 28th June 2012

Where the visual and performing arts  
meet disability

A Conference for

Performers, Artists, Parents, Teachers, Media Producers,  
Programme planners, Venue managers, Students, Educators,  
Health Care Professionals and anybody with an interest in  
the arts, disability and creating partnerships.



[www.irishperformingarts.ie](http://www.irishperformingarts.ie)

find us on



follow us on



This event is part of the  
Irish Performing Arts Festival/ European Song Festival  
which takes place in Cork from  
Wednesday 27 – Friday 29 June 2012

in association with the EASPD (European Association of Service Providers  
for Persons with Disabilities) and National Federation of Voluntary Bodies

The patron of the Irish Performing Arts Festival is  
President of Ireland, Michael D. Higgins.

Drama | Music | Music & Technology | TV & Production | Dance | Arts in Ireland | Visual Arts

# Continuing Professional Development

## Arts for living conference cont/...



PUNKY



Tara Brandel

### CONFERENCE

**WEDNESDAY**  
**JUNE 27 2012**  
€60 including Lunch

- Drama** **The Life and Times of PUNKY.** Lindsay Sedgwick (Creator & Writer), Gerard O'Rourke (Monster Animation), and Aimee Richardson (Narrator / Down Syndrome Ireland) will discuss the series Punky from concept, through partnership, to creation and screening. "A NEW Irish-made cartoon series has become the first television series in the world to have a main character with Down Syndrome -- and it is set to take the world by storm" Herald 2010
- Music** **Carousel** works to promote the active involvement of people with a learning disability in the arts, teaches new artistic skills and developing existing talents.
- Music & Technology** **Drake Music** breaking down disabling barriers to music through innovative approaches to learning, teaching and making music. Anya Ustaszewski (Composer) and Gary Day (Assistive Music Technology Specialist) talk about how assistive technology helps people with a disability make and engage with music.
- TV & Production** **EMPO TV** is a TV channel in Norway dedicated to and presented by people with an intellectual disability. Hear the founder and presenter discuss EMPO TV's journey.
- Dance** **Tara Brandel (Artistic Director, Co-founder Croi Glan)**, contemporary choreographer and performer, will discuss best practice and professionalism surrounding integrated dance.
- Arts in Ireland** **Pádraig Naughton** (Director of Arts & Disability Ireland) which is creating opportunities for artists and audiences with disabilities in Ireland.
- Visual Arts** **'On the Edge of My Sky'** (supported by CIT Crawford College of Art and Design) was a year long artist residency project with participants at St. Raphael's Centre for Intellectual Disability. Visual Artist Marie Brett and Art Therapist John McHarg will present on issues of participatory ethics, the need for clarity of intent plus identified roles and boundaries. Information on a further programme between CIT Crawford College of Art and Design and COPE Foundation will also be presented.

**THURSDAY**  
**JUNE 28 2012**  
FREE, Voluntary  
donations welcome.

**Workshops** Further Presentations and Workshops will take place on Thursday 28th June. Limited places for Workshops, booking essential.

To register your interest in this unique conference  
**Arts for Living**

email your name, address and contact number to  
[eurossong@cope-foundation.ie](mailto:eurossong@cope-foundation.ie)  
call 021 4643428

or post the slip below to **Cope Foundation, QDS, Vicar's Road, Togher, Cork** and we will contact you.

Name

Address

Tel

Email



The Irish Performing Arts Festival is very kindly supported by



Drama | Music | Music & Technology | TV & Production | Dance | Arts in Ireland | Visual Arts

# New publications and policy reports

**Currie C et al., eds. *Social determinants of health and well-being among young people. Health Behaviour in School-aged Children (HBSC) study: international report from the 2009/2010 survey.* Copenhagen, WHO Regional Office for Europe, 2012 (Health Policy for Children and Adolescents, No. 6).**

Through this international report on the results of its most recent survey, the Health Behaviour in School-aged Children (HBSC) study supplies the up-to-date information needed by policy-makers at various levels of government, nongovernmental organizations, and professionals in sectors such as health, education, social services, justice and recreation. A link to the report can be found here: [http://www.euro.who.int/\\_data/assets/pdf\\_file/0003/163857/Social-determinants-of-health-and-well-being-among-young-people.pdf](http://www.euro.who.int/_data/assets/pdf_file/0003/163857/Social-determinants-of-health-and-well-being-among-young-people.pdf)

**Comprehensive Review of Expenditure 2011, CEEU Cross-Cutting Paper No.1, Rationalising Multiple Sources of Funding to Not-for-Profit Sector, March 2012**

This report recommends, inter alia:

- The funding model whereby each agency receives part-funding from different State agencies, for different or overlapping objectives, serves neither efficiency nor effectiveness
- The number of State-to-agency transactions should be reduced, by rationalizing both the number of bodies and the number of State interlocutors
  - Reduce the number of transactions between the state and the “third sector” this means less organisations supported and less organisations providing the supports. Change will be difficult and will encounter resistance
- In this context, one State body should be responsible for ‘core’ funding of each agency, and all State supports for the agency should be channeled through the one State body
- This consolidated funding model will allow for greater clarity and accountability for results
- Expenditure consolidation, which will be a feature of the period 2012-2015, should be coupled with reform of this nature in order to preserve services and mitigate impacts on vulnerable groups insofar as possible

A copy of the report can be found here: <http://www.cwc.ie/wp-content/uploads/2012/03/Multi-Source-Funding-Cross-Cutting-Paper-2.pdf>

**The Community Work Approach to Peacebuilding, February 21, 2012 A Resource Guide to Inform and Engage the Sector**

This Resource Guide forms part the CWC PEACE III Project ‘Harnessing Equality for Lasting Peace’ Project and has been moulded by facilitated sessions at seminars, workshops and residentials with community workers in the region on a cross-border basis

The work has been informed by Dr. Kenneth Bush’s ‘Aid for Peace’ methodology and also by practice within the International Development Sector.

The purpose of ‘The Community Work Approach to Peacebuilding’ Resource Guide is to:

- Explore and begin a dialogue on the relationship between Community Work and Peacebuilding focused on Social Change;
- Provide examples of creative ways to bring about such change using case studies;
- Broaden understanding of the ways to measure successes as well as examine the potential for improvement;
- Assist community workers in achieving positive outcomes and impacts for the communities that they work with; and
- Be a practical resource for community workers by providing contact details for case studies and other useful links.

A copy of the report can be found here: <http://www.cwc.ie/wp-content/uploads/2012/02/CWC-Peacebuilding-Report-Final-2011.pdf>

# New publications and policy reports

## **Mental Health Commission, 2012, "Annual Report 2011".**

This is the tenth report of the Mental Health Commission, and it includes the Report of the Inspector of Mental Health Services for the year ended December 31st 2011 in accordance with Section 42 of the Mental Health Act 2001. It sets out the programme of work the MHC undertook during the year and the progress made towards achieving the MHC's strategic objectives as set out in the Strategic Plan for the 2009-2012 period. The report sets out in detail the Commission's work in pursuit of the objectives contained in the Strategic Plan which is derived from their mandate as laid down in Section 33 of the 2001 Act. A link to the report can be found here: [http://www.mhcirl.ie/Publications/Annual\\_Reports/Annual\\_Rpt2011.pdf](http://www.mhcirl.ie/Publications/Annual_Reports/Annual_Rpt2011.pdf)

## **NSUE "Second Opinions" Report, January 2012**

This is the third successive year that the National Service Users Executive (NSUE) has carried out a national client satisfaction survey. This report has been presented in a way that we hope is easily understood by our members. That is its primary objective. The use of jargon, and complicated terminology has been avoided to the greatest possible extent. A copy of the report can be found here: <http://www.nsue.ie/m/uploads/files/SO2011.pdf>

## **Draft National Standards for the Protection and Welfare of Children, 2012, HIQA**

Proposed new national standards for the protection and welfare of children were launched for public consultation on Thursday March 22<sup>nd</sup> 2012 by the Health Information and Quality Authority. The [Draft National Standards for the Protection and Welfare of Children](#) are grouped under six key headings, and they cover issues such as listening to children, assessment and planning, working with other agencies, the protection of children across a range of settings and the training and support of staff. A copy of the draft can be found here: <http://www.hiqa.ie/system/files/Draft-Standards-Protection-and-Welfare-of-Children-Consultation.pdf>

## **CORU Newsletter, Issue 1**

We hope you enjoy reading the Newsletter and find it informative. We would welcome any feedback and suggestions for future issues at [info@coru.ie](mailto:info@coru.ie). <http://www.coru.ie/media-events/newsletter-issue-1/>

## **ILO World of Work Report**

[http://www.ilo.org/wcmsp5/groups/public/---dgreports/---dcomm/documents/publication/wcms\\_179453.pdf](http://www.ilo.org/wcmsp5/groups/public/---dgreports/---dcomm/documents/publication/wcms_179453.pdf)

## **Social Work Action Network (Ireland)**

Newsletter, dates, regional groups etc: <http://www.socialworkfuture.org/about-swan/regional-swan/ireland>

## **Children's Rights in Ireland: Critical Times, Critical Issues**

This topical book comprehensively draws together diverse perspectives from key leaders in the field to address critical issues for children in relation to their rights, welfare and protection at a critical time in Ireland. Edited by Deborah Lynch and Kenneth Burns and published by Manchester University Press.

The broad array of chapters addresses the changing and complex landscape of policy, practice and law. It discusses the politics of children's rights, the impact of child abuse within the catholic church, diverse approaches to service delivery and professional practice, the media and representations of child protection practice, and the relationship between research evidence and practice. It offers a critique of governance in children's services and identifies key barriers to fundamental progress in the area of children's rights and the protection of children.

This original book fills a gap in publications in this area in Ireland. It is vital reading for academics, practitioners, managers, students and policy-makers, as well as being accessible to individuals with a broad interest in child welfare and protection.

<http://www.manchesteruniversitypress.co.uk/cgi-bin/indexer?product=9780719086274>

# New publications and policy reports

## **DIALOGUE IN PRAXIS: A Social Work International Journal**

The Dialogue in Praxis journal publishes the papers which are or will be presented at the School for Social Work Theory and Practice at Inter-university Centre ([IUC](#)) in Dubrovnik, Croatia, where teachers of social work, post-graduate students and social work practitioners as well as users meet annually to engage in the dialogue on social work praxis, i.e. knowledge of action.

It is devoted to multiplicity of social work, stemming from various national and international experiences. The aim of the journal is to attract all those who want to contribute to live discussions on contemporary issues in social work – both the actual ones held in Dubrovnik, as well as on-line and published discussion on the topics of social work theories and methods. These include the relationship between social work and social policy, working with children, youth justice, deinstitutionalisation, community support systems, ageing and spirituality in social work.

Contributions are based on the work at [IUC](#) and include academic articles of a discursive nature, research or empirical analysis. The richness of the journal should stem from descriptions and analyses of national policies, service delivery and state of art of social work in different countries. We also invite participants to share reports and reflections on research, and also the development of projects in which they were involved, either in introducing innovations, developing methods, changing the organisation or implementing policies.

The [IUC](#) has created the journal to provide an opportunity to ‘showcase’ high quality student work on their research, experiences and projects. It also includes views and reflections of the participants regarding the discussion in the courses, pamphlets on special issues in social work. The aim of the journal is to provide a review of material published in languages other than English in order to allow at least some of the neglected knowledge to slip through the language barriers. The journal gives an opportunity to extend the lively and alive discussion in Dubrovnik over the whole year and for people who have not attended the course. It aims to sponsor on-going and on-line serious and engaged discussion over the topics developed at the [IUC](#) or the topics to be followed when we meet at [IUC](#) next year.

[DIALOGUE IN PRAXIS](#) also creates a theoretical context, a space where it is possible to reflect praxis, develop the knowledge of doing social work, and ultimately creating better services that will really serve the users. It will enable singularities of existence but also connect people in solidarity and in the struggle against oppression. The journal aims to use the dialogue of difference, to use the wealth of people coming together from different countries and with different backgrounds to promote social work as science of doing, to be critical of its political and economic, cultural and structural framework and to create visions of how can people live together without being oppressed or excluded. Social work is a way of giving voice but also the instrument of change. The editors, the course directors and other participants will seek a way to include various materials form various participants yet with high quality of debate and articulation.

Access to the first edition of this FREE journal can be found here: <http://www.dialogueinpraxis.net/index.php?id=5>



# New publications and policy reports

## Special Edition of Irish Journal of Applied Social Studies (Free access on website)

Advance notice of a special issue of the Irish Journal of Applied Social Studies, 'Reflections on recent child abuse reports: Implications for policy and practice, which shall be posted on the journal's website this summer: <http://arrow.dit.ie/ijass/>. The guest editors are Dr. Aine de Róiste, CIT and Professor Fred Powell, UCC. Please watch this space, and connect to the Irish Journal of Applied Social Studies on LinkedIn”

An impossible task? Implementing the recommendations of child abuse inquiry reports in a context of high workloads in child protection and welfare  
Kenneth Burns & Joe MacCarthy

Parenting and family support for families 'at risk' - implications from child abuse reports  
Ann Marie Halpenny

Ireland's opportunity to learn from England's difficulties? Auditing uncertainty in child protection  
Brid Featherstone, Sue White & Dave Wastell

Gender and child protection-insights from research  
Majella Mulkeen

The Ryan Report (2009). Implications for residential social care workers, managers and policy makers: A practitioner's perspective  
Noel Howard

Learning lessons from the past: Legal issues arising from Ireland's child abuse inquiries  
Ursula Kilkelly

Using intelligence to shape reforms in child protection  
Helen Buckley

### Book Reviews

Keenan, M. (2012). Child sexual abuse & the Catholic Church: Gender, power and organizational culture. Oxford: Oxford University Press.  
Rosaleen McElvaney

# Practice signposts: data sources to support practice



Practice signposts are new permanent pages that will appear in every edition of *Practice Links*. The aim of this page is to provide sign posts to high quality research-informed databases. Some of the databases at a quick glance may seem too medical/health orientated, but also contain great resources to support social work and social care practice also.

## **Campbell Collaboration**

The Campbell Collaboration (C2) helps people make well-informed decisions by preparing, maintaining and disseminating systematic reviews in education, crime and justice, and social welfare. Access to the database in the Republic of Ireland is free as the government of Ireland has purchased a [license](http://www.campbellcollaboration.org/). <http://www.campbellcollaboration.org/>

## **Cochrane Collaboration**

The Cochrane Collaboration, established in 1993, is an international network of more than 28,000 dedicated people from over 100 countries. We work together to help health care providers, policy makers, patients, their advocates and carers, make well-informed decisions about health care, based on the best available research evidence, by preparing, updating and promoting the accessibility of [Cochrane Reviews](http://www.cochrane.org/). Our work is internationally recognised as the benchmark for high quality information about the [effectiveness](http://www.cochrane.org/) of health care.

<http://www.cochrane.org/>

## **National Institute for Health and Clinical Excellence (NICE) - NHS UK**

The National Institute for Health and Clinical Excellence (NICE) provides guidance, sets quality standards and manages a national database to improve people's health and prevent and treat ill health. <http://www.nice.org.uk/> . Videocasts: <http://www.nice.org.uk/newsroom/videocasts/videocasts.jsp>. Podcasts: <http://www.nice.org.uk/newsroom/podcasts/index.jsp>

## **Health Intelligence Unit (HSE)**

Health Intelligence is part of the Quality and Clinical Care Directorate within the Health Service Executive and is responsible for capturing and utilising knowledge to support decision-making to improve the health of the population. Website has links to HSE research, databases, facts (census etc.), publications and using evidence effectively. [http://www.hse.ie/eng/about/Who/Population\\_Health/Health\\_Intelligence/](http://www.hse.ie/eng/about/Who/Population_Health/Health_Intelligence/)

## **Evidence in Health and Social Care (NHS)**

NHS Evidence is a service that enables access to authoritative clinical and non-clinical evidence and best practice through a web-based portal. It helps people from across the NHS, public health and social care sectors to make better decisions as a result. NHS Evidence is managed by the National Institute for Health and Clinical Excellence (NICE). <http://www.evidence.nhs.uk/>

# Practice signposts: data sources to support practice



## Social Care Institute for Excellence (SCIE)

The Social Care Institute for Excellence (SCIE) improves the lives of people who use care services by sharing knowledge about what works. We are an independent charity working with adults, families and children's social care and social work services across the UK. We also work closely with related services such as health care and housing. We gather and analyse knowledge about what works and translate that knowledge into practical resources, learning materials and services. Our work helps to improve the knowledge and skills of those working in care services. This includes managers, frontline staff, commissioners and trainers. People and their families who use these services also use our resources. All of our work is developed in collaboration with experts - including people who use care services and their carers. <http://www.scie.org.uk/>

## Decision Map.ie

DecisionMap.ie, the new online decision-support tool developed by Ordnance Survey Ireland and Twelve Horses. DecisionMap, currently in beta test release, combines digital mapping from Ordnance Survey Ireland, with visualisation and web delivery tools developed by Twelve Horses, and statistical data provided by the Central Statistics Office and others. It aims to provide decision makers in the public and private sectors instant access to easily-consumable, spatially-referenced data about Ireland. <http://decisionmap.ie/>

## Growing Up in Ireland

Growing Up in Ireland is a national study of children. It is the most significant of its kind ever to take place in this country and will help us to improve our understanding of all aspects of children and their development.

The study will take place over seven years and follow the progress of two groups of children; 8500 nine-year-olds and 11,000 nine-month-olds. During this time we will carry out two rounds of research with each group of children.

The main aim of the study is to paint a full picture of children in Ireland and how they are developing in the current social, economic and cultural environment. This information will be used to assist in policy formation and in the provision of services which will ensure all children will have the best possible start in life.

## Irish Qualitative Data Archive

The Irish Qualitative Data Archive (IQDA) is a central access point for qualitative social science data and provides online access to all new qualitative data generated within the [Irish Social Science Platform](http://www.isssplatform.com/), and to selected existing data. <http://www.iqda.ie/content/welcome-iqda>

## North South Child Protection Hub

This hub available for use by child protection professionals (policy makers, practitioners, researchers and educators) in Northern Ireland and the Republic of Ireland.

The Hub brings together research, policy and practice guidance, inspection reports, serious case reviews, court judgements, news articles and other material relevant to child protection published in Northern Ireland and the Republic of Ireland together with material from Great Britain and other countries. Staff in the Health and Social Care Board and Trusts in Northern Ireland and in the Health Service Executive in the Republic of Ireland, will have access to the Hub but it will also be an important resource for all organisations concerned with child protection. <http://www.nscph.com/>

## Spiritual and religious interventions for well-being of adults in the terminal phase of disease (May, 2012)

Bridget Candy, Louise Jones, Mira Varaganam, Peter Speck, Adrian Tookman, Michael King,



**Background:** As terminal disease progresses, health deteriorates and the end of life approaches, people may ask "Why this illness? Why me? Why now?" Such questions may invoke, rekindle or intensify spiritual or religious concerns. Although the processes by which these associations occur are poorly understood, there is some research evidence for associations that are mainly positive between spiritual and religious awareness and wellness, such as emotional health.

**Objectives:** This review aimed to describe spiritual and religious interventions for adults in the terminal phase of a disease and to evaluate their effectiveness on well-being.

**Search methods:** We searched 14 databases to November 2011, including the Cochrane Central Register of Controlled Trials and MEDLINE.

**Selection criteria:** We included randomised controlled trials (RCTs) if they involved adults in the terminal phase of a disease and if they evaluated outcomes for an intervention that had a spiritual or religious component. Primary outcomes were well-being, coping with the disease and quality of life.

**Data collection and analysis:** In accordance with the inclusion criteria, two review authors independently screened citations. One review author extracted data which was then checked by another review author. We considered meta-analysis for studies with comparable characteristics.

**Main results:** Five RCTs (1130 participants) were included. Two studies evaluated meditation, the others evaluated multi-disciplinary palliative care interventions that involved a chaplain or spiritual counsellor as a member of the intervention team. The studies evaluating meditation found no overall significant difference between those receiving meditation or usual care on quality of life or well-being. However, when meditation was combined with massage in the medium term it buffered against a reduction in quality of life. In the palliative care intervention studies there was no significant difference in quality of life or well-being between the trial arms. Coping with the disease was not evaluated in the studies. The quality of the studies was limited by under-reporting of design features.

**Authors' conclusions:** We found inconclusive evidence that interventions with spiritual or religious components for adults in the terminal phase of a disease may or may not enhance well-being. Such interventions are under-evaluated. All five studies identified were undertaken in the same country, and in the multi-disciplinary palliative care interventions it is unclear if all participants received support from a chaplain or a spiritual counsellor. Moreover, it is unclear in all the studies whether the participants in the comparative groups received spiritual or religious support, or both, as part of routine care or from elsewhere. The paucity of quality research indicates a need for more rigorous studies.

A link to the article can be found here: <http://onlinelibrary.wiley.com/doi/10.1002/14651858.CD007544.pub2/full>

## The effects of "Pulling Levers" focused deterrence strategies on crime

April 2012, Anthony Braga and David Weisburd



**BACKGROUND:** A number of American police departments have been experimenting with new problem-oriented policing frameworks to prevent gang and group-involved violence generally known as the “pulling levers” focused deterrence strategies. Focused deterrence strategies honor core deterrence ideas, such as increasing risks faced by offenders, while finding new and creative ways of deploying traditional and non-traditional law enforcement tools to do so, such as directly communicating incentives and disincentives to targeted offenders. Pioneered in Boston to halt serious gang violence, the focused deterrence framework has been applied in many American cities through federally sponsored violence prevention programs. In its simplest form, the approach consists of selecting a particular crime problem, such as gang homicide; convening an interagency working group of law enforcement, social-service, and community-based practitioners; conducting research to identify key offenders, groups, and behavior patterns; framing a response to offenders and groups of offenders that uses a varied menu of sanctions (“pulling levers”) to stop them from continuing their violent behavior; focusing social services and community resources on targeted offenders and groups to match law enforcement prevention efforts; and directly and repeatedly communicating with offenders to make them understand why they are receiving this special attention. These new strategic approaches have been applied to a range of crime problems, such as overt drug markets and individual repeat offenders, and have shown promising results in the reduction of crime.

**OBJECTIVES:** To synthesize the extant evaluation literature and assess the effects of pulling levers focused deterrence strategies on crime.

**SELECTION CRITERIA:** Eligible studies had to meet three criteria: (1) the program had to have the core elements of a pulling levers focused deterrence strategy present; (2) a comparison group was included; (3) at least one crime outcome was reported. The units of analysis had to be people or places.

**SEARCH STRATEGY:** Several strategies were used to perform an exhaustive search for literature fitting the eligibility criteria. First, a keyword search was performed on an array of online abstract databases. Second, we reviewed the bibliographies of past narrative and empirical reviews of literature that examined the effectiveness of pulling levers focused deterrence programs. Third, we performed forward searches for works that have cited seminal focused deterrence studies. Fourth, we searched bibliographies of narrative reviews of police crime prevention efforts and past completed Campbell systematic reviews of police crime prevention efforts. Fifth, we performed hand searches of leading journals in the field.

**DATA COLLECTION AND ANALYSIS:** For our ten eligible studies, we complete a narrative review of effectiveness and a formal meta-analysis of the main effects of these programs on reported crime outcomes.

**MAIN RESULTS:** Based on our narrative review, we find that nine of the ten eligible evaluations reported statistically significant reductions in crime. It is important to note here that all ten evaluations used nonrandomized quasi-experimental designs. No randomized controlled trials were identified by our search strategies. Our meta-analysis suggests that pulling levers focused deterrence strategies are associated with an overall statistically-significant, medium-sized crime reduction effect.

**CONCLUSIONS:** We conclude that pulling levers focused deterrence strategies seem to be effective in reducing crime. However, we urge caution in interpreting these results because of the lack of more rigorous randomized controlled trials in the existing body of scientific evidence on this approach.

## Web Links and Electronic Publications

### **Council of Irish Adoption Agencies - New Leaflets**

Post Adoption Information Leaflets are a series of leaflets, produced by the CIAA, which give an overview of adoption in Ireland and provide information about the process of information and tracing in Ireland.

Post Adoption Information Leaflets: Adopted people 1-11 offer information and advice to adopted people who are considering searching for information about their background, tracing birth relatives, have been sought by birth relatives, and to those who may go on to have contact with birth family members.

Post Adoption Information Leaflets: Birth parent (s) 1-9 offer information and advice to birth parents who are considering searching for their son or daughter, have been sought by their son or daughter, and to those who may go on to have contact with their son or daughter.

Post Adoption Information Leaflets: Adoptive parents 1-2 provide information for adoptive parents whose son or daughter may be thinking about searching for information or tracing a birth relative.

All available from: <http://councilofirishadoptionagencies.com/>

### **Irish Social Worker's Unite to Win Face Book Page**

<http://www.facebook.com/profile.php?id=100002283186790>

### **Information for Practice (IP)**

To help social service professionals throughout the world conveniently maintain an awareness of news regarding the profession and emerging scholarship. The goals of IP are: to identify and deliver a selection of the highest quality available in each category; regularly deliver an interesting mix of new information; create a more global sense of the profession for users from all locales and serve as an introductory socialization force for students <http://ifp.nyu.edu/>

# Podcasts



**What is a Podcast?** A multi-media file made available by the internet which can be viewed or listened to on a computer, tablet, MP3 player or CD player.

**How do I listen to a Podcast?** You can listen to a Podcast straightaway on any PC which has speaker or a headphones or you can download it to listen to later. The file can also be saved to an MP3 player or USB memory stick. Some modern CD players can play Podcasts just like a music CD.

**Some Podcasts are updated regularly – how do I get the latest version?** You can use iTunes or other services to check regularly to see if the Podcast has been updated. You can also subscribe using an RSS feed which will inform you when the new edition is ready. Some Smartphones can also download and update Podcasts. For more information go to: <http://www.bbc.co.uk/podcasts/help>

## Video Podcast & Resources Website

The Social Work Toolkit is a versatile collection of online resources focused on developing students' understanding and practice skills. Developed by the number one social work publisher in consultation with educators and social work professionals, it helps provide students with the core skills, knowledge and confidence they need to succeed on their course and throughout their placements. [http://www.youtube.com/watch?v=qFPA9h7ai\\_E](http://www.youtube.com/watch?v=qFPA9h7ai_E)

## Video Podcast: What is Borderline Personality Disorder?

A brief overview of BPD from an American mental health website. Covers an interesting topic in an accessible way and includes an overview of the therapeutic approaches available for sufferers. <http://www.youtube.com/watch?v=xdPuSnP8YY8>

## Audio Podcast: Research on Poverty in Northern Ireland

An online lecture from the Joseph Rowntree trust on the topic of how have poverty, work, benefits and education have changed in Northern Ireland since 2009. Speakers included Julia Unwin, Dr Peter Kenway and Tom MacInnes (authors of the research), Junior Ministers Martina Anderson and Jonathan Bell MLA, Joanne Stewart (Director, Attrus Limited) and Maria Webb (Springvale Learning). [http://josephrowntree.podomatic.com/entry/2012-05-04T03\\_29\\_09-07\\_00](http://josephrowntree.podomatic.com/entry/2012-05-04T03_29_09-07_00)

## Audio Podcast: Disability Issues

Link to the latest podcast on the Beautyability website which covers a wide range of topics from dating to wheelchair fashion. The latest episode includes an interview with a former Ms. Wheelchair Minnesota who works as a motivational speaker. She talks frankly about her life and work. <http://www.beautyability.com/2.0/tag/disability-podcast/>

## Audio: BBC Healthcheck Programme

Link to the latest edition of the programme which covers: What works and what doesn't when it comes to strategies to encourage us to cut down on drinking; the science of love - does the internet change the nature of the search for a soulmate; swapping a 500km road trip for a quick SMS text message to get medical test results out faster in Zambia. <http://www.bbc.co.uk/podcasts/series/healthc>

## Audio: Defining Evidence Based Practice

Today's episode of the Social Work Podcast is on the process of Evidence-Based Practice. The podcast defines evidence based practice and gives some insight into the actual process of EBP. The difference is debated between evidence based practice and empirically-supported treatments. The author identifies some of the limitations of the EBP process, resources for social workers interested in accessing the evidence-base, and ways that social workers could support each other in being evidence-based practitioners <http://socialworkpodcast.blogspot.com/2011/03/process-of-evidence-based-practice.html#more>



# Podcasts



**What is a Podcast?** A multi-media file made available by the internet which can be viewed or listened to on a computer, tablet, MP3 player or CD player.

**How do I listen to a Podcast?** You can listen to a Podcast straightaway on any PC which has speaker or a headphones or you can download it to listen to later. The file can also be saved to an MP3 player or USB memory stick. Some modern CD players can play Podcasts just like a music CD.

**Some Podcasts are updated regularly – how do I get the latest version?** You can use iTunes or other services to check regularly to see if the Podcast has been updated. You can also subscribe using an RSS feed which will inform you when the new edition is ready. Some Smartphones can also download and update Podcasts. For more information go to: <http://www.bbc.co.uk/podcasts/help>

---

## Audio: Eating Disorders

Lecture from posted by Kings College London from Janet Treasure and Melissa Wolfe on the topic of eating disorders available at: <http://www.iop.kcl.ac.uk/podcast/?id=272&type=item> This site includes a wide variety of lectures on a wide range of subjects from the effects of drug use to race issues.

## Audio: lectures and Podcasts from the London School of Economics

A wide selection of informative and topical broadcasts across variety of topics in the area of social policy. <http://www2.lse.ac.uk/newsAndMedia/videoAndAudio/channels/publicLecturesAndEvents/Home.aspx>

## Audio: Cultural Competent Social Work: Why Bother?

An entertaining and informative lecture by Lena Dominelli (author of Anti-Oppressive SW Theory & Practice) on the topic of culturally competent social work practice. She speaks about the need to celebrate cultural diversity and why cultural awareness remains crucial to best practice. <http://www.iriss.org.uk/resources/culturally-competent-social-work-why-bother-lena-domenelli>

## 3rd Biennial Child Protection and Welfare Conference Keynote Videos

All of the keynote videos from this conference are now available in high definition from <http://swconf.ucc.ie/videos/> . Please note some organisation's Internet content filters may block this page.





# About Practice Links

*Practice Links* is a free e-publication for practitioners working in Irish social services, voluntary and non-governmental sectors. *Practice Links* was created to help practitioners in these areas to keep up-to-date with new publications, electronic publications, conferences and continuing professional development opportunities. *Practice Links* is published every other month in Adobe Acrobat (.pdf file). Distribution is by email and on the *Practice Links* website <http://www.ucc.ie/en/appsoc/aboutus/activities/pl/>.

# Submissions

Submission for publication should be received two weeks prior to the next publication date. Please forward submissions by email to [k.burns@ucc.ie](mailto:k.burns@ucc.ie).

# SWDU

*Practice Links* is a publication of the Social Work Development Unit, University College Cork, Ireland. <http://swdu.ucc.ie>

# Subscriptions

To subscribe for free to the *Practice Links* email distribution list, whereby you will automatically receive each edition, click on this link <http://lists.ucc.ie/lists/archives/pl-l.html> and press the *Join or Leave PL-L* button. Follow the same process to unsubscribe from the list.

# Disclaimer

The inclusion of an item in *Practice Links* does not represent an endorsement and items may not necessarily reflect the views of the editor and/or the University.

## Practice Links is edited by

**Kenneth Burns**

School of Applied Social Studies  
University College Cork  
William Thompson House  
Donovan's Road, Cork, Ireland.

T +353-21-4903151 E: [k.burns@ucc.ie](mailto:k.burns@ucc.ie)  
W: <http://www.ucc.ie/en/appsoc/aboutus/activities/pl/>  
W: <http://swdu.ucc.ie>

## Practice Links Team

**Kerry Cuskelly**

Adult Mental Health Social Worker

**Steven Peet**

Social Worker, HSE

**Kenneth Burns**

School of Applied Social Studies

\* Photo copyright "nobleup Coming Back Slowly" from [www.flickr.com](http://www.flickr.com)



# UCC

Coláiste na hOllscoile Corcaigh, Éire  
University College Cork, Ireland