

|                             |   |
|-----------------------------|---|
| Title                       | Clinical consensus guidelines on the application of cerebrospinal fluid biomarkers for Alzheimer's disease diagnosis: recommendations of the Irish Network for Biomarkers in Neurodegeneration  |
| Authors                     | Miller, A.-M.;Begley, E.;Coen, R.;Doyle, M.;Dunne, J.;Hutchinson, S.;Kennelly, S. P.;Kenny, R. A.;Killeen, R.;Lynch, A.;O'Dwyer, S.;O'Neill, Cora;O'Sullivan, S.;Rowan, M.;Sheehy, N.;McGuigan, C.;Lawlor, Brian A.   |
| Publication date            | 2016-11   |
| Original Citation           | Miller, A.-M., Begley, E., Coen, R., Doyle, M., Dunne, J., Hutchinson, S., Kennelly, S. P., Kenny, R. A., Killeen, R., Lynch, A., O'Dwyer, S., O'Neill, C., O'Sullivan, S., Rowan, M., Sheehy, N., McGuigan, C. and Lawlor, B. A. (2016) 'Clinical consensus guidelines on the application of cerebrospinal fluid biomarkers for Alzheimer's disease diagnosis: recommendations of the Irish Network for Biomarkers in Neurodegeneration', Irish Medical Journal, 109(10), 483 (12pp). doi:10147/621025 |
| Type of publication         | Article (peer-reviewed)   |
| Link to publisher's version | 10147/621025  |
| Rights                      | © 2016, Irish Medical Journal. All rights reserved.   |
| Download date               | 2025-02-11 22:26:28   |
| Item downloaded from        | <a href="https://hdl.handle.net/10468/5894">https://hdl.handle.net/10468/5894</a>   |



# UCC

**University College Cork, Ireland**  
Coláiste na hOllscoile Corcaigh



[This Month](#)

[Archive](#)

[Subscribe](#)

[For Authors](#)

[About Us](#)

[My CPD](#)

[Hosted Content](#)

[Home](#)

# Clinical Consensus Guidelines on the Application of Cerebrospinal Fluid Biomarkers for Alzheimer's Disease Diagnosis: Recommendations of the Irish Network for Biomarkers in Neurodegeneration

**Miller A-M<sup>1</sup>, Begley E<sup>2</sup>, Coen R<sup>3</sup>, Doyle M<sup>2</sup>, Dunne J<sup>4</sup>, Hutchinson S<sup>5</sup>, Kennelly SP<sup>6</sup>, Kenny RA<sup>1</sup>, Killeen RP<sup>7</sup>, Lynch A<sup>8</sup>, O'Dwyer S<sup>3</sup>, O'Neill C<sup>9</sup>, O'Sullivan SS<sup>10</sup>, Rowan MJ<sup>11</sup>, Sheehy N<sup>12</sup>, McGuigan C<sup>13,14</sup>, Lawlor BA<sup>3,15</sup>.**

<sup>1</sup> Department of Medical Gerontology, School of Medicine, Trinity College Dublin, Ireland;

<sup>2</sup> The Alzheimer Society of Ireland, Blackrock, Dublin, Ireland;

<sup>3</sup> Mercer's Institute of Successful Ageing, St. James's Hospital, Dublin, Ireland;

<sup>4</sup> Immunology Department, Trinity College Dublin, Ireland and Immunology Department, St James's Hospital, Dublin, Ireland;

<sup>5</sup> Department of Neurology, St. James's Hospital, Dublin, Ireland;

<sup>6</sup> Department of Age-Related Health Care, Tallaght Hospital, Dublin, Ireland;

<sup>7</sup> Department of Radiology, St. Vincent's University Hospital, Dublin, Ireland;

<sup>8</sup> Department of Old Age Psychiatry, Mater Misericordiae University Hospital, Dublin, Ireland;

<sup>9</sup> Department of Biochemistry, BioSciences Institute, University College Cork, Cork, Ireland;

<sup>10</sup> Department of Neurology, University College Cork, Cork, Ireland;

<sup>11</sup> Department of Pharmacology and Therapeutics, Trinity College Dublin, Ireland;

<sup>12</sup> Department of Radiology, St. James's Hospital, Dublin, Ireland;

<sup>13</sup> Department of Neurology, St. Vincent's University Hospital, Dublin 4, Ireland;

<sup>14</sup> School of Medicine and Medical Science, University College Dublin, Ireland;

<sup>15</sup> Trinity College Institute of Neuroscience, Trinity College Dublin, Ireland.

## **Abstract**

*It is accepted that a lumbar puncture (LP) and cerebrospinal fluid (CSF) biomarker analysis support the routine diagnostic work-up for the differential diagnosis of dementia due to Alzheimer's disease (AD) within certain patient cohorts<sup>1</sup>. These tests, which measure CSF protein concentrations of amyloid- $\beta_{42}$  ( $A\beta_{42}$ ), total tau (t-tau) and phospho tau (p-tau), were recently validated, accredited and made available clinically for the first time in Ireland. A working group, comprising Irish clinical and scientific researchers, met to review a) the validation results; b) international consensus opinions, and c) research and clinical evidence as to the clinical utility of CSF biomarker analysis for AD dementia diagnosis. The outcome of this meeting was the formulation of a consensus statement paper for the benefit of health care professionals involved in the diagnosis and management of dementia to ensure appropriate use of these biomarker tests in clinical settings in Ireland.*

## **Introduction**

A diagnostic biomarker possessing good sensitivity and specificity can support AD diagnosis and lower the probability of false negative or false positive test results particularly when trying to rule out non-AD dementias<sup>2,3</sup>. Traditionally AD diagnosis has been made using the National Institute of Neurological and Communicative Disorders and Stroke and Alzheimer's disease and Related Disorders Association (NINDS-ADRA) criteria<sup>4</sup> which have a reported average sensitivity and specificity of 81% and 70% respectively<sup>5</sup>. This indicates that in some cases these criteria, if used without additional diagnostic supports, may identify individuals as having AD when in fact they may have a non-AD dementias<sup>6</sup>.

CSF biomarker analysis and neuroimaging biomarker platforms have proven sensitivity and specificity for discriminating

for AD dementia and have, along with several other biomarkers, been recommended as diagnostic adjuncts in the recently revised National Institute on Aging and Alzheimer's Association's (NIA-AA) research diagnostic criteria for AD dementia<sup>7</sup> (Table 1). A $\beta$ <sub>42</sub>, t-tau and p-tau are recognised as the most informative of all CSF biomarkers in relation to their analytical sensitivity and specificity for the diagnosis of AD<sup>7</sup>. They mirror the pathophysiology of AD with decreased CSF A $\beta$ <sub>42</sub> and increased CSF t-tau and p-tau concentrations reflecting increased amyloid plaque load in the brain parenchyma, and neuronal degeneration and neurofibrillary tangle formation respectively, expected changes in AD CSF biomarker levels are such that A $\beta$ <sub>42</sub> concentrations decrease to around 50% of control levels and t-tau and p-tau CSF concentrations increase by 200-300% over controls (as reviewed by Blennow *et al.*, 2015)<sup>3</sup>. CSF A $\beta$ <sub>42</sub> concentration is inversely related to A $\beta$  plaque load levels as measured in living brain biopsies<sup>8</sup> and p-tau and t-tau CSF concentrations reflect the scale of degenerative neuronal AD-pathology. In addition, very high t-tau CSF concentrations are closely associated with more rapid advancement to AD and increased death rates<sup>9</sup>.

Magnetic resonance imaging (MRI) and computed tomography (CT) demonstrate atrophy of the hippocampus and temporal cortex and fluorodeoxyglucose-positron emission tomography (FDG-PET) shows neuronal functional decline as represented by hypometabolism of the parietotemporal lobe and posterior cingulate gyrus in AD affected brains<sup>10,11</sup>. Structural imaging (MRI, CT) allows for the exclusion of non-AD diseases, and MRI can be helpful for observing disease progression over time<sup>11,12</sup>, FDG-PET on the other hand lends itself to increasing diagnostic certainty with a reported specificity of 95% for supporting the differential diagnosis of other dementias<sup>13</sup>.

While widely accepted as research tools, challenges exist regarding the use of CSF biomarker testing in clinical settings; at the fore lies a lack of standardisation with respect to its execution and analysis. Reports to date have shown that the most established assay platforms for measuring CSF biomarkers perform well at a local level with an intra-laboratory variation of around 10%<sup>14</sup>. However inter-laboratory variation at 20-30% is unacceptably high, and renders the interpretation of assay data across clinical or research facilities difficult<sup>14,15</sup>. To overcome this issue it has been recommended that each laboratory develop its own CSF biomarker reference ranges and cut-off values, pertinent to the relevant local population, using well defined subject recruitment criteria and data/sample collection methodologies<sup>15</sup>. Secondly, at present there are no guidelines as to when each of the biomarkers, imaging, and CSF could be used to best effect during the dementia diagnostic process, whether they should be assessed in parallel to maximise sensitivity and specificity or in isolation (as reviewed by Blennow *et al.*, 2015)<sup>3</sup>. However, it has been reported that their ability to discriminate for AD significantly increases when they are used in combination<sup>16</sup>.

Finally, other issues include a lack of defined indications for the clinical use of CSF biomarker analysis and guidelines on interpreting test results; moreover the lack of a long-term AD related disease modifying therapy strengthens the argument that it is potentially psychologically harmful to diagnose an individual at the very early or pre-dementia stages of AD. However, it has been reported that early diagnosis provides patients with relief and that there is substantial interest in early diagnostic testing in the public arena<sup>17,18</sup>. Furthermore, obtaining a diagnosis can allow patients to plan for the future in an informed manner and, importantly, assessment can detect treatable or reversible causes of memory disorders. To date, published consensus recommendations have focused on CSF biomarkers being used in cases of uncertain aetiology,

atypical presentation or early onset neurodegeneration or dementia as it is felt that the standard assessment criteria should be sufficient to delineate typical cases of AD dementia. Most guidelines recognise the utility of measuring A $\beta$ <sub>42</sub>, t-tau and p-tau in combination with routine diagnostic methods<sup>1,19</sup>.

## Methods

A working group comprising members of the Irish Network for Biomarkers in Neurodegeneration (IN-BIND), Irish neurologists, geriatricians, geriatric psychiatrists, neuropsychologists, neuro-radiologists, medical laboratory scientists and a representative of the Alzheimer Society of Ireland met to discuss CSF biomarker analysis for dementia diagnosis to produce consensus statement recommendations for Irish health care professionals involved in the diagnosis and management of dementia (Summarised Table 2) The working group identified the most salient issues concerning the use of CSF biomarkers in clinical settings and discussed these points in the context of CSF biomarker testing recently becoming available in Ireland and with reference to international consensus recommendations and supporting scientific publications.

| Biomarkers for Alzheimer's disease                        | Pathophysiological correlate                               |
|---|--|
| <b>Neuropsychological</b>                                 |  |
| Tests of episodic memory / delayed recall                 | Hippocampal amnesia due to AD                              |
| <b>Cerebrospinal fluid</b>                                |  |
| Amyloid-beta42 (A $\beta$ <sub>42</sub> )                 | Extra neuronal A $\beta$ <sub>42</sub> plaque accumulation |
| Total tau (t-tau)   | Neuronal degeneration / injury marker                      |
| Phosphorylated tau (p-tau)                                | Intra neuronal neurofibrillary tangle formation            |
| <b>Amyloid Imaging</b>                                    |  |
| Amyloid PET   | A $\beta$ <sub>42</sub> plaque accumulation                |
| <b>Neuroimaging - structural</b>                          |  |
| Magnetic Resonance Imaging (MRI)                          | Neuronal injury marker                                     |
| Computed tomography (CT)                                  | Neuronal injury marker                                     |
| <b>Neuroimaging - functional</b>                          |  |
| Fluorodeoxyglucose-positron emission tomography (FDG PET) | Neuronal injury marker                                     |

**Table 1. Classification of biomarkers used in the differential diagnosis of AD.**

## Summary Recommendations

|                                    |  |
|------------------------------------|--|
| <b>Indications</b>                 | AD CSF biomarker analysis should be considered in young onset, atypical (e.g. language, visuospatial, executive dysfunction) and rapidly progressing presentations   |
| <b>Cut-offs and Interpretation</b> | A validated reference range and CSF biomarker cut offs pertinent to the Irish population were devised as part of the assay validation carried out in the clinical CSF biomarker reference laboratory, St. James's Hospital. If all 3 core CSF biomarkers are pathological then the CSF biomarker result can be considered 'neurochemically compatible' with a diagnosis of AD and vice versa if all 3 are within the normal range <sup>15</sup> . An explanatory statement should accompany the test results to assist clinicians in their assessment of the outcome <sup>15</sup> . |
| <b>Patient information</b>         | Prior to testing patients should be made aware of the possible benefits and limitations regarding the use of CSF biomarker analysis for AD dementia diagnosis. Test results should be used to support diagnosis within the framework of the entire clinical history.   |

Table 2. Summary IN-BIND working group recommendations for AD dementia diagnosis supported by CSF biomarker analysis (Molinuevo *et al.*, *Alzheimers Dement.* 2014; 10: 808-817)<sup>15</sup>

## Results

### Consensus Procedural Recommendations

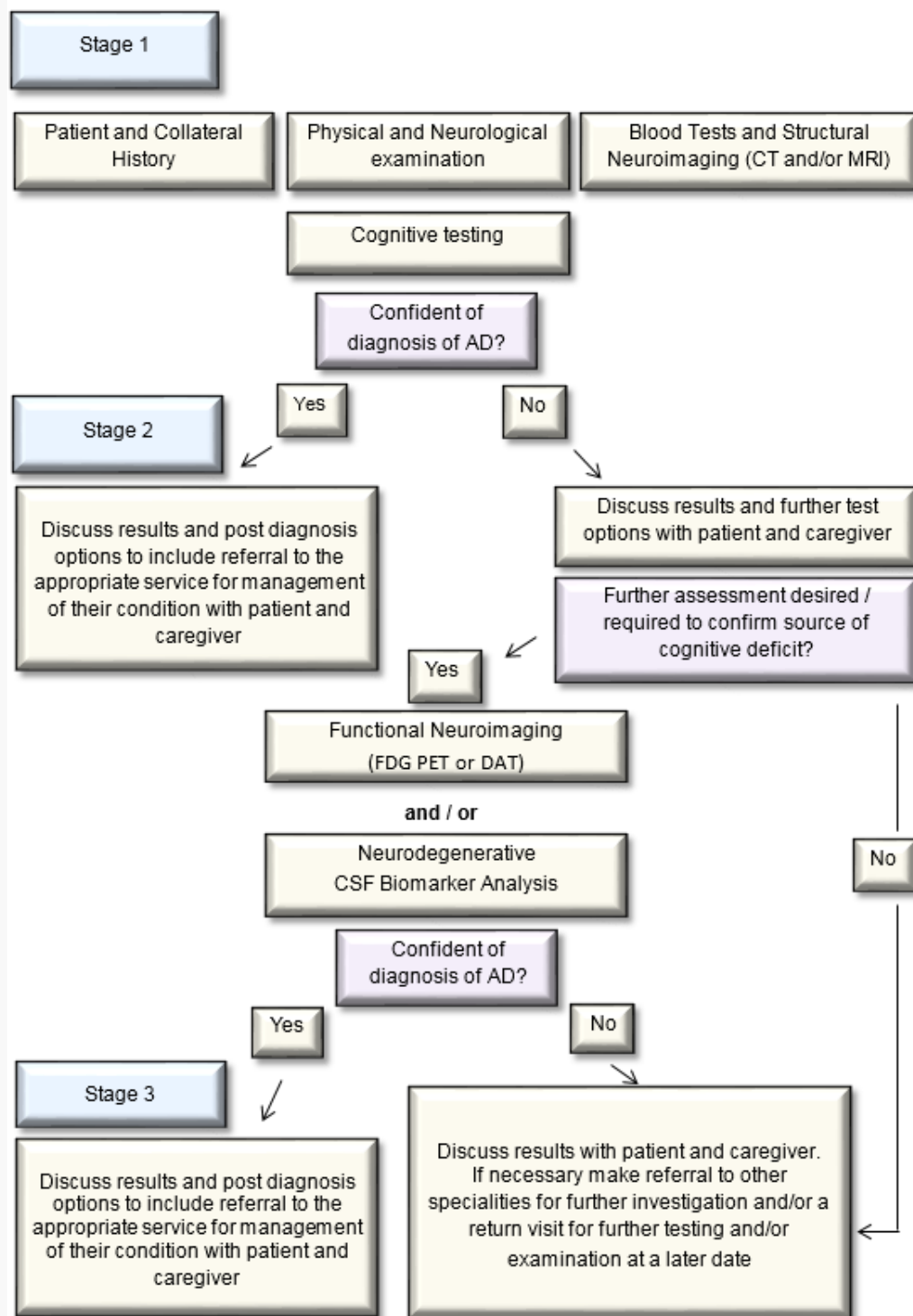
#### *Indications*

The majority of cases of dementia can be accurately diagnosed using standard assessment which involves clinical history (including collateral), physical and neurological examination, routine blood tests to exclude treatable/reversible causes [FBC, Renal, Liver, Bone profiles, Thyroid function tests, vitamin B12, folate], structural neuroimaging (CT or MRI preferable, with volumetric 3D sequence and coronal reformats for assessment of medial temporal lobes and hippocampal volume estimation) and neuro-cognitive testing (ideally cognitive testing should include evaluation of executive function, language, praxis, visuospatial and memory functions).

Where the standard assessment does not result in delineating the cause of the cognitive disorder, or in the case of rapidly progressive, young onset and atypical presentations, further functional neuroimaging (FDG PET) and/or LP for CSF analysis for the core AD biomarkers should be considered. A $\beta$ <sub>42</sub>, t-tau and p-tau are the recommended biomarkers to support the diagnosis of dementia due to AD. Where DLB is a possibility, a 123I-FP-CIT single photon emission computed tomography (SPECT) (aka DaT) scan is a useful functional neuroimaging test<sup>20</sup>. In individuals with MCI, where the person wishes to know whether the cause of their memory complaint is possibly due to AD, biomarker analysis can be carried out following discussion between physician and patient on limitations of use in this context. CSF biomarker testing is not indicated in asymptomatic or genetically at-risk individuals. The recommendation for CSF biomarker testing should only be made in specialist settings by clinicians who are familiar with the testing and can interpret the results in the

context of a comprehensive patient assessment (Figure 1)

**Figure 1:** Flow Chart for the application of biomarkers for AD dementia in the clinical assessment of indicated patients



*Biomarker results interpretation*

Sufficient sensitivity and specificity for CSF analysis and biomarker cut points is required to ensure an accurate AD diagnosis, and the value of a negative result cannot be understated. The working group recommendations indicate that CSF acquisition and processing be carried out according to standardised validated protocols (Table 3); that AD CSF biomarker analysis be carried out at a certified facility again according to standardised methodologies; that biomarker feedback include all three AD biomarkers ( $A\beta_{42}$ , t-tau and p-tau) and that test results be assessed within the clinical context. Furthermore, following a review of the literature, the working group recommends that the following interpretation be applied to CSF biomarker results; in cases where pathological changes in all 3 CSF biomarkers are observed the CSF biomarker profile can be considered 'neurochemically compatible' with a diagnosis of AD and vice versa, if no pathological changes in the 3 CSF biomarkers are observed this result is considered 'neurochemically incompatible' with a diagnosis of AD. Moreover, CSF biomarker results in any other combination have been described as non-informative in relation to an AD diagnosis and further investigation is advised<sup>15</sup>. Finally, it is also recommended that results should be supported by an explanatory statement<sup>15</sup> and that decisions on diagnosis should be made collectively)

### CSF sample acquisition and processing

| Activity                     | Recommendation  |
|------------------------------|---|
| <b>LP execution</b>          | Use a small bore atraumatic needle of at least 22 gauge to reduce the risk of post-LP headache. Needle insertion should be at L3/L4 or L4/L5 (or L2/L3 or L3/L4 if performed under fluoroscopy guidance).   |
| <b>CSF sample collection</b> | Discard the first 0.5-1mL of CSF if blood is observed, with the remaining sample being collected in a new clean tube. Collect the CSF sample (4mL for clinical diagnosis; circa 10-12mL for research purposes) in a <i>polypropylene</i> tube to prevent adherent proteins (e.g. $A\beta_{42}$ ) from sticking to the collection tube. Send the sample to the local laboratory <u>without undue delay</u> for processing.                     |
| CSF processing / storage     | A portion of CSF should be made available for routine CSF analysis (cell counts, differential and total protein, IgG, IgM, glucose and lactate). Remaining CSF should be centrifuged at room temperature for ten minutes at 2000g (rcf). Aliquots of CSF supernatant (minimum 250-500 $\mu$ l) should be made in <i>polypropylene</i> tubes and kept upright until frozen (-20°C for routine clinical analysis; -80°C for long term storage). |

Advisory note: In order to avoid unnecessary additional procedures, if a LP is carried out as part of a patient's clinical work up but not for the purposes of CSF biomarker analysis it is recommended that any remaining CSF be handled in the appropriate manner (see above) should diagnosis prove difficult and CSF testing subsequently be considered.

**Table 3. Recommendations for standardised LP execution and CSF sample collection, processing and storage. (Adapted from del Campo *et al.*, *Biomarkers Med.* 2012; 6(4): 419-430<sup>24</sup> and Alzheimer's Association. Protocols [internet]. USA: Blennow K. 2009<sup>25</sup>).**

### *Informed decision making, patient information and feedback*

Bearing in mind that the person in question has a cognitive impairment , and possible dementia , clinicians need to be mindful that all information pertaining to the test be as accessible as possible and that it may need to be conveyed to the individual a number of times, therefore , regular checking for understanding is recommended. Clinicians must also be sensitive to the level of information wanted by the patient and tailoring of information for each patient is advised. In advance of testing patients should be advised firstly, that the test is an adjunct to the diagnosis of AD, improving the



clinicians' confidence of the diagnosis when added to all other clinical and testing information; and secondly, that the result may or may not support the diagnosis of AD and may prove inconclusive.

Final diagnosis must be informed by the entire assessment process and other test results, including the CSF biomarker results. Best practice indicates that disclosure should not be a once-off process and again for each person the process of disclosure, being mindful of the patient's perspective, may differ. Results should be clearly explained in the context of their overall clinical picture.

## **Discussion**

The IN-BIND working group consensus recommendations support the clinical use of CSF biomarker analysis in the delineation of dementia due to AD. Clinical and research evidence shows CSF biomarkers have a high degree of sensitivity and specificity for AD and their capacity to positively contribute to the AD dementia diagnosis process, by increasing clinician confidence and supporting diagnostic accuracy in certain clinical situations, has been proven. Indeed, a comparison of the sensitivity of various biomarker platforms to discriminate for AD showed that MRI, CBF-SPECT, FDG-PET and CSF biomarkers performed with equal sensitivity in cases of moderate dementia; that CSF biomarkers and FDG-PET performed best in cases of mild dementia and CSF biomarkers alone performed best in cases classed as being of questionable dementia or mild cognitive impairment (clinical dementia rating 0.5)<sup>21</sup>. Moreover, CSF biomarkers have proven diagnostic accuracy and discriminatory capacity displaying 85% concordance with neuropathological and clinical evaluations and 90% capacity to distinguish between AD patients and controls<sup>22</sup>. However, it is important to recognise that the specificity of the CSF biomarkers is lower for other dementias due to confounding factors such as underlying mixed pathologies or comorbidities<sup>23</sup>.

However, despite the acknowledged contribution that CSF biomarker analysis can make to the AD dementia diagnostic process, variation exists in the awareness of, and in attitudes and practices relating to, CSF biomarker analysis within and between countries across Europe. This disparity is recognised as one of the main barriers to their acceptance in clinical settings. In this context the IN-BIND consensus process highlighted the need for a clear defined pathway for clinicians as to how to incorporate CSF testing into the AD dementia diagnostic process, as well as the requirement for the dissemination of well-defined protocols for the appropriate handling and processing of CSF samples. The working group's recommendations provide a framework to guide practitioners as to the appropriate use of, and standardised application of, CSF biomarker analysis for the differential diagnosis of AD dementia in Ireland.

### **Conflict of Interest:**

The authors have no conflicts of interest to declare in relation to this work.

## Correspondence:

Prof. Brian Lawlor, Trinity College Institute of Neuroscience, Trinity College, College Green, Dublin 2, Ireland.

Email: lawlorba@tcd.ie

## Acknowledgements

This work is part of the BIOMARKAPD project within the EU Joint Programme for Neurodegenerative Disease Research (JPND) and is supported through the Health Research Board under the aegis of JPND – [www.jpnd.eu](http://www.jpnd.eu).

We would like to acknowledge the contributions of Prof. Con Feighery, St. James's Hospital, Dublin, Ireland; Prof. Orla Hardiman, Trinity College Dublin, Ireland; Dr. Josh Keaveny, Sports Surgery Clinic, Dublin, Ireland; Dr. Deirdre Lohan, Sports Surgery Clinic, Dublin, Ireland; Prof. Marina Lynch, Trinity College Dublin, Ireland; Prof. Tim Lynch, Dublin Neurological Institute and Mater Misericordiae Hospital, Dublin, Ireland; Dr. Helena Moore, Bon Secours Hospital, Tralee, Ireland; Dr. Tom Schnittger, Sports Surgery Clinic, Dublin, Ireland; and Dr. Laura Williams, St. Vincent's Hospital, Dublin, Ireland in supporting IN-BIND and the BIOMARKAPD project.

## References

1. Hort J, O'Brien JT, Gainotti G, Pirttila T, Popescu BO, Rektorova I, Sorbi S, Scheltens P, on behalf of the EFNS scientific panel on dementia. EFNS guidelines for the diagnosis and management of Alzheimer's disease. *Eur J Neurol*. 2010; 17(10): 1236-1248.
2. Anoop A, Singh PK, Jacob RS, Maji SK. CSF biomarkers for Alzheimer's disease diagnosis. *Int J Alzheimer Dis*. 2010; 606802
3. Blennow K, Dubois B, Fagan AM, Lewczuk P, deLeon MJ, Hampel H. Clinical utility of cerebrospinal fluid biomarkers in the diagnosis of early Alzheimer's disease. *Alzheimers Dement*. 2015; 11(1) :58-69.
4. McKhann G, Drachman D, Folstein M, Katzman R, Price D, Stadlan EM. Clinical diagnosis of Alzheimer's disease : report of the NINCDS-ADRDA work group under the auspices of Department of Health and Human Services Task Force on Alzheimer's disease. *Neurology*. 1984; 34(7): 939-944.
5. Knopman DS, DeKosky ST, Cummings JL, Chui H, Corey-Bloom J, Relkin N, Small GW, Miller B, Stevens JC. Practice parameter: Diagnosis of dementia (an evidence-based review). *Neurology*. 2001; 56(9): 1143-1153.
6. Dubois B, Feldman HH, Jacova C, DeKosky ST, Barberger-Gateau P, Cummings J, Delacourte A, Galasko D, Gauthier S, Jicha G, Meguro K, O'Brien J, Pasquier F, Robert P, Rossor M, Salloway S, Stern Y, Visser PJ, Scheltens P. Research

- criteria for the diagnosis of Alzheimer's disease: revising the NINDS-ADRA criteria. *Lancet Neurol.* 2007; 6(8): 734-46.
7. McKhann G, Knopman DS, Chertkow H, Hyman BT, Jack CR Jr, Kawas CH, Klunk WE, Koroshetz WJ, Maly JJ, Mayeux R, Mohs RC, Morris JC, Rossor MN, Scheltens P, Carrillo MC, Thies B, Weintraub S, Phelps CH. The diagnosis of dementia due to Alzheimer's disease: recommendations from the National Institute on Aging-Alzheimer's Association workgroups on diagnostic guidelines for Alzheimer's disease. *Alzheimers Dement.* 2011; 7(3): 263-269.
  8. Seppälä TT, Nerg O, Koivisto AM, Rummukainen J, Puli L, Zetterberg H, Pyykkö OT, Helisalmi S, Alafuzoff I, Hiltunen M, Jääskeläinenoininen H, Leinonen V, Herukka SK. CSF biomarkers for Alzheimer disease correlate with cortical brain biopsy findings. *Neurology.* 2012; 78(20): 1568-1575.
  9. Dergeman Gunnarsson M, Lannfelt L, Ingelsson M, Basun H, Kilander L. High tau levels in cerebrospinal fluid predict rapid decline and increased dementia mortality in Alzheimer's disease. *Dement Geriatr Cogn Disord.* 2014; 37(3-4):196–206.
  10. Hampel H, Bürger K, Teipel SJ, Bokde ALW, Zetterberg H, Blennow K. Core candidate neurochemical and imaging biomarkers of Alzheimer's disease. *Alzheimers Dement.* 2008; 4(1): 38-48.
  11. Johnson KA, Fox NC, Sperling RA, Klunk WE. Brain imaging in Alzheimer disease. *Cold Spring Harb Perspect Med.* 2012; 2(4):a006213.
  12. Desikan RS, Cabral HJ, Settecase F, Hess CP, Dillon WP, Glastonbury CM, Weiner MW, Schmansky NJ, Salat DH, Fischl B; Alzheimer's Disease Neuroimaging Initiative. Automated MRI measures predict progression to Alzheimer's disease. *J Neurobiol Aging.* 2010; 31(8): 1364-1374.
  13. Panegyres PK, Rogers JM, McCarthy M, Campbell A, Wu JS. Fluorodeoxyglucose-positron emission tomography in the differential diagnosis of early-onset dementia: a prospective, community-based study. *BMC Neurology.* 2009; 9: 41-49.
  14. Mattsson N, Andreasson U, Persson S, Carrillo MC, Collins S, Chalbot S, Cutler N, Dufour-Rainfray D, Fagan AM, Heegaard NH, Robin Hsiung GY, Hyman B, Iqbal K, Kaeser SA, Lachno DR, Lleó A, Lewczuk P, Molinuevo JL, Parchi P, Regeniter A, Rissman RA, Rosenmann H, Sancesario G, Schröder J, Shaw LM, Teunissen CE, Trojanowski JQ, Vanderstichele H, Vandijck M, Verbeek MM, Zetterberg H, Blennow K; Alzheimer's Association QC Program Work Group. CSF biomarker variability in the Alzheimer's Association quality control program. *Alzheimers Dement.* 2013; 9(3): 251-261.
  15. Molineuvo JL, Blennow K, Dubois B, Engleborghs S, Lewczuk P, Perredt-Liaudet A, Teunissen CE, Parnetti L. The clinical use of cerebrospinal fluid biomarker testing for Alzheimer's disease diagnosis: A consensus paper from the Alzheimer's Biomarkers Standardization Initiative. *Alzheimers Dement.* 2014; 10(6): 808-817.

16. Walhovd KB, Fjell AM, Brewer J, McEvoy LK, Fennema-Notestine C, Hagler DJ, Jennings RG, Karow D, Dale AM. Combining MRI, PET and CSF biomarkers in diagnosis and prognosis of Alzheimer's disease. *AJNR Am J Neuroradiol*. 2010 February; 31(2): 347.
17. Carpenter BD, Xiong C, Porensky EK, Lee MM, Brown PJ, Coats M, Johnson D, Morris JC. Reaction to a dementia diagnosis in individuals with Alzheimer's disease and mild cognitive impairment. *J Am Geriatr Soc*. 2008; 56(3): 405–412.
18. Blendon RJ, Benson JM, Wikler EM, Weldon KJ, Georges J, Baumgart M, Kallmyer BA. The impact of experience with a family member with Alzheimer's disease on views about the disease across five countries. *Int J Alzheimer's Dis*. 2012; 2012:903645.
19. Rosa-Neto P, Hsiung GR, Masellis M; CCDTD4 participants. Fluid biomarkers for diagnosing dementia: rationale and the Canadian consensus on diagnosis and treatment of dementia recommendations for Canadian physicians. *Alzheimer's Research & Therapy*. 2013; 5(Suppl 1):S8.
20. Walker Z, Jaros E, Walker RW, Lee L, Costa DC, Livingston G, Ince PG, Perry R, McKeith I, Katona CL. Dementia with Lewy bodies: a comparison of clinical diagnosis, FP-CIT single photon emission computed tomography imaging and autopsy. *J Neurol Neurosurg Psychiatry*. 2007; 78(11): 1176-1181.
21. Morinaga A, Ono K, Ikeda T, Ikeda Y, Shima K, Noguchi-Shinohara M, Samuraki M, Yanase D, Yoshita M, Iwasa K, Mastunari I, Yamada M. A comparison of the diagnostic sensitivity of MRI, CBF-SPECT, FDG-PET and cerebrospinal fluid biomarkers for detecting Alzheimer's disease in a memory clinic. *Dement Geriatr Cogn Disord*. 2010; 30(4): 285-92.
22. Schoonenboom NS, Reesink FE, Verwey NA, Kester MI, Teunissen CE, van de Ven PM, Pijnenburg YA, Blankenstein MA, Rozemuller AJ, Scheltens P, van der Flier WM. Cerebrospinal fluid markers for differential dementia diagnosis in a large memory clinic cohort. *Neurology*. 2012; 78(1): 47-54.
23. Ewers M, Mattsson N, Minthon L, Molinuevo JL, Antonell A, Popp J, Jessen F, Herukka SK, Soininen H, Maetzler W, Leyhe T, Bürger K, Taniguchi M, Urakami K, Lista S, Dubois B, Blennow K, Hampel H. CSF biomarkers for the differential diagnosis of Alzheimer's disease. A large-scale international multicenter study. *Alzheimers Dement*. 2015; 11(11): 1306-1315.
24. del Campo M, Mollenhauer B, Bertolotto A, Engelborghs S, Hampel H, Simonsen AH, Kapaki E, Kruse N, Le Bastard N, Lehmann S, Molinuevo JL, Parnetti L, Perret-Liaudet A, Sáez-Valero J, Saka E, Urbani A, Vanmechelen E, Verbeek M, Visser PJ, Teunissen C. Recommendations to standardize preanalytical confounding factors in Alzheimer's and Parkinson's disease cerebrospinal fluid biomarkers: an update. *Biomarkers Med*. 2012; 6(4): 419-430.
25. Alzheimer's Association. Protocols [internet]. USA: Blennow K. 2009 [cited 2016 Feb 11]. Available from:



[This Month](#) [Archive](#) [Subscribe](#) [For Authors](#) [About Us](#) [My CPD](#)  
[Hosted Content](#) [Home](#)

Theme by Tyler Moore