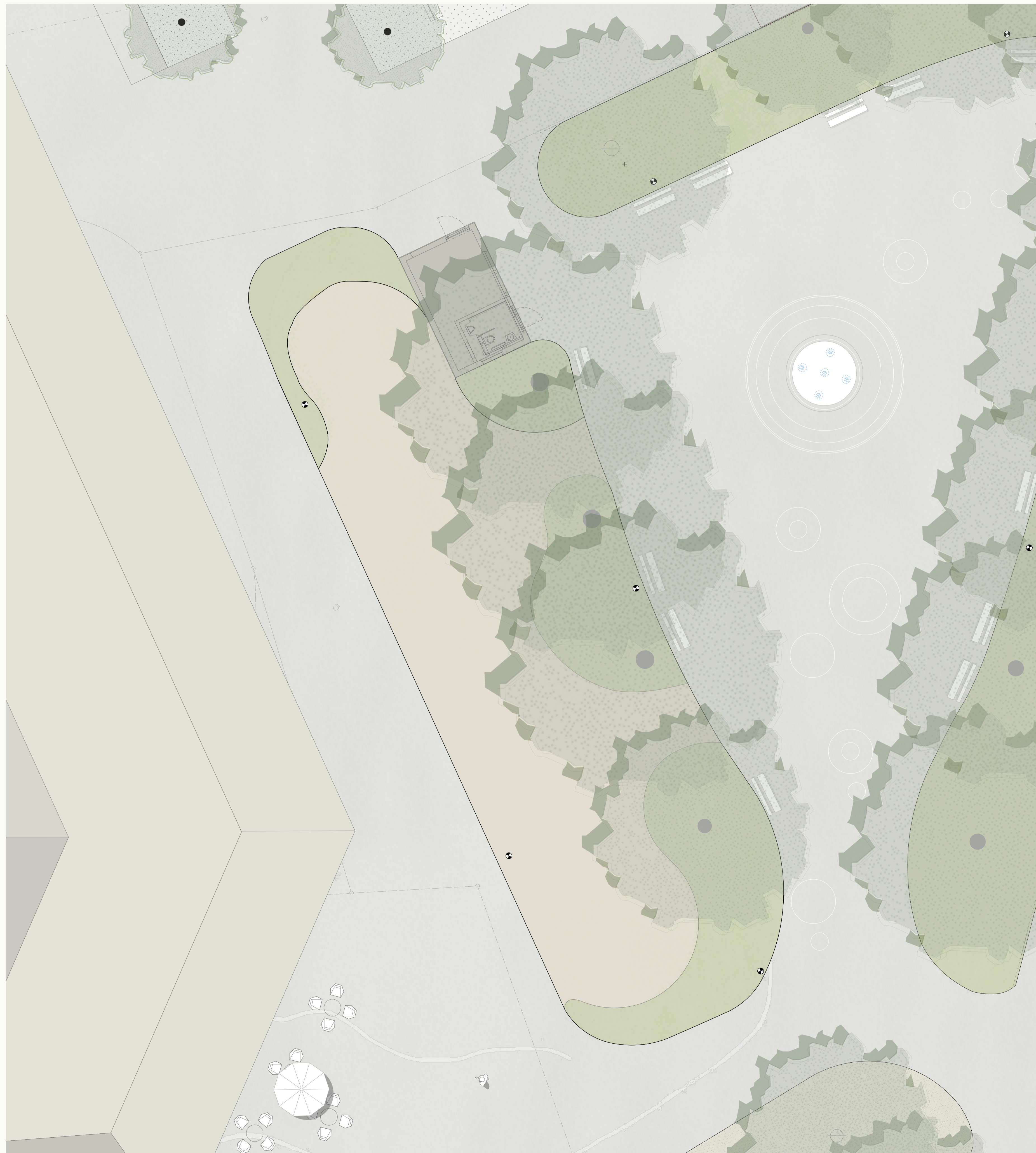


Title	Designing inclusive playgrounds in Switzerland: why is it so complex?
Authors	Wenger, Ines;Prellwitz, M.;Lundström, U.;Lynch, Helen;Schulze, C.
Publication date	2022-05-22
Original Citation	Wenger, I.; Prellwitz, M., Lundström, U., Lynch, H. and Schulze, C. (2022) 'Designing inclusive playgrounds in Switzerland: why is it so complex?', Children's Geographies, (15 pp). doi: 10.1080/14733285.2022.2077093
Type of publication	Article (peer-reviewed)
Link to publisher's version	<a href="https://doi.org/10.1080/14733285.2022.2077093">https://doi.org/10.1080/14733285.2022.2077093</a> - 10.1080/14733285.2022.2077093
Rights	© 2022 The Author(s). Published by Informa UK Limited, trading as Taylor & Francis Group. This is an Open Access article distributed under the terms of the Creative Commons Attribution-NonCommercial-NoDerivatives License ( <a href="http://creativecommons.org/licenses/by-nc-nd/4.0/">http://creativecommons.org/licenses/by-nc-nd/4.0/</a> ), which permits non-commercial re-use, distribution, and reproduction in any medium, provided the original work is properly cited, and is not altered, transformed, or built upon in any way. - <a href="http://creativecommons.org/licenses/by-nc-nd/4.0/">http://creativecommons.org/licenses/by-nc-nd/4.0/</a>
Download date	2025-03-19 16:39:19
Item downloaded from	<a href="https://hdl.handle.net/10468/13534">https://hdl.handle.net/10468/13534</a>

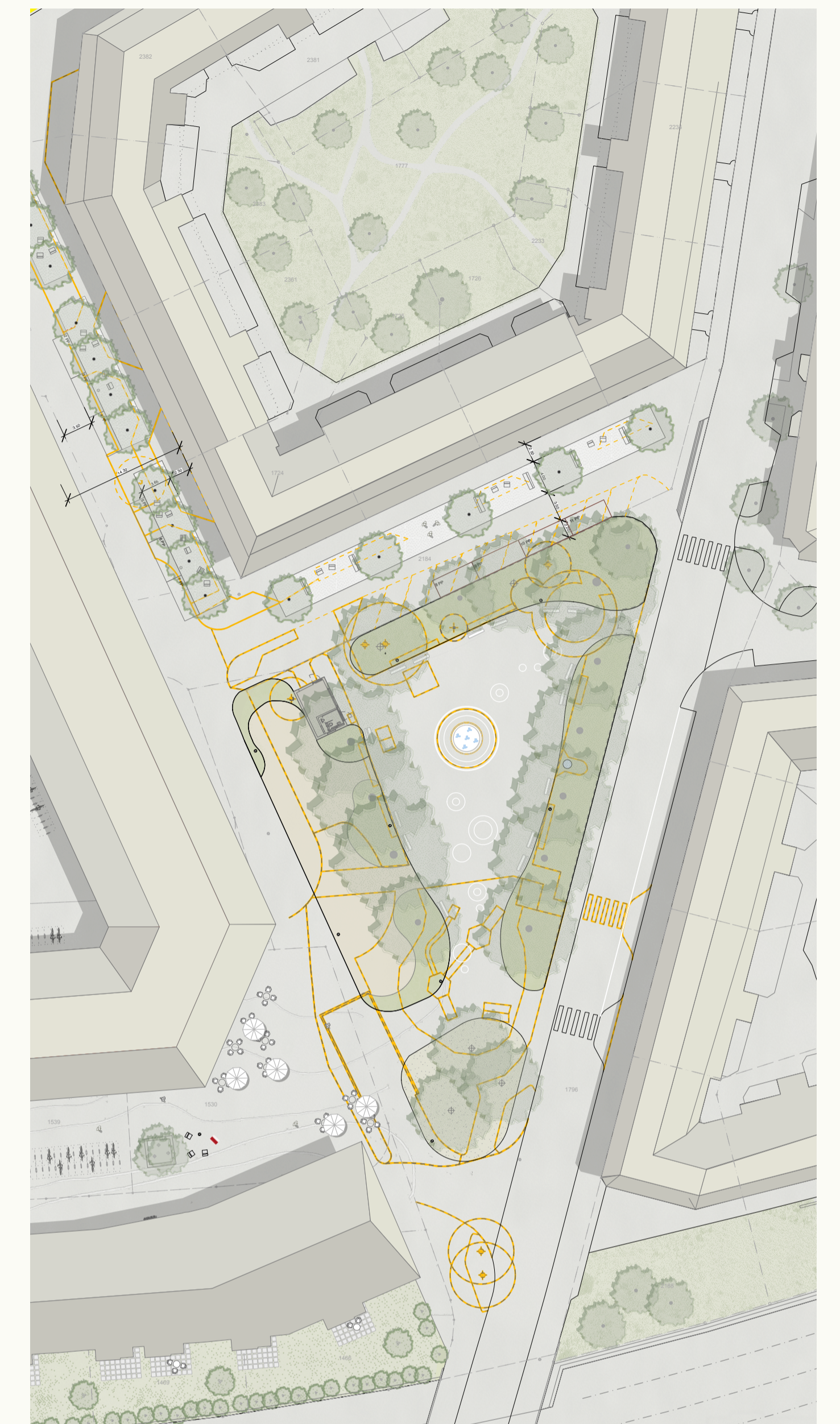


# UCC

**University College Cork, Ireland**  
Coláiste na hOllscoile Corcaigh



Ausschnitt M. 1:100



Situationsplan M. 1:500

Ersatzneubau Wohnsiedlung Himmelrich 3 / Bleichergärtli  
 Bauerschaft: Stadt Luzern / abl allgemeine baugenossenschaft luzern

Luzern

Projekt - Ausschnitt Spielplatz

1:100 / 1:500

Plan-Nr. 012.6

A1

Datum: 31.05.2017

gez. prn/as

Koepfli Partner GmbH  
 Landschaftsarchitekten BSLA

Neustadtstrasse 3 6003 Luzern  
 buero@koepflipartner.ch www.koepflipartner.ch

Enzmann Fischer Partner AG

Seebahnstrasse 109 8003 Zürich