

Title	Copper-nanostructure-modified laser-scribed electrodes based on graphitic carbon for electrochemical detection of dopamine and glucose
Authors	Juska, Vuslat B.;Juska, Gediminas
Publication date	2020-11-25
Original Citation	Juska, V. B. and Juska, G. (2020) 'Copper-nanostructure-modified laser-scribed electrodes based on graphitic carbon for electrochemical detection of dopamine and glucose', Journal of Chemical Technology and Biotechnology, 96(4), pp. 1086-1095. doi: 10.1002/jctb.6620
Type of publication	Article (peer-reviewed)
Link to publisher's version	10.1002/jctb.6620
Rights	© 2020, Society of Chemical Industry. Published by John Wiley & Sons Ltd. This is the peer reviewed version of the following item: Juska, V. B. and Juska, G. (2020) 'Copper-nanostructure-modified laser-scribed electrodes based on graphitic carbon for electrochemical detection of dopamine and glucose', Journal of Chemical Technology and Biotechnology, 96(4), pp. 1086-1095, doi: 10.1002/jctb.6620, which has been published in final form at: https://doi.org/10.1002/jctb.6620 This article may be used for non-commercial purposes in accordance with Wiley Terms and Conditions for Use of Self-Archived Versions.
Download date	2025-07-03 23:40:34
Item downloaded from	https://hdl.handle.net/10468/12481



University College Cork, Ireland
Coláiste na hOllscoile Corcaigh

Supporting Information

Copper nanostructures modified laser scribed electrodes based on graphitic carbon for electrochemical detection of dopamine and glucose

Vuslat B. Juska* and Gediminas Juska

Tyndall National Institute, University College Cork, Ireland

Vuslat.Juska@tyndall.ie

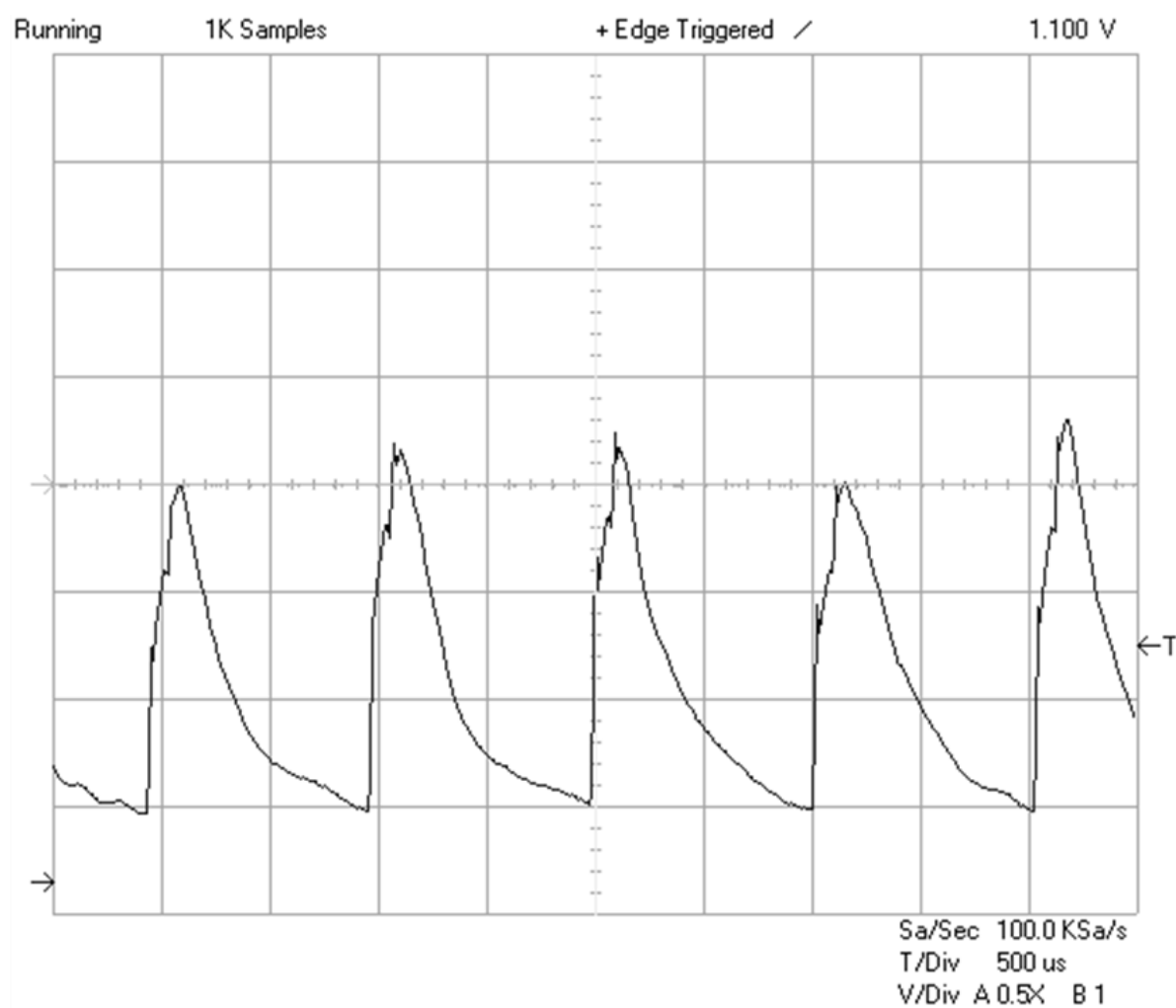


Figure S1. An optical power of the 405nm 0.5W CW laser modulated at 1kHz. The trace was recorded with a silicon photodetector and oscilloscope.

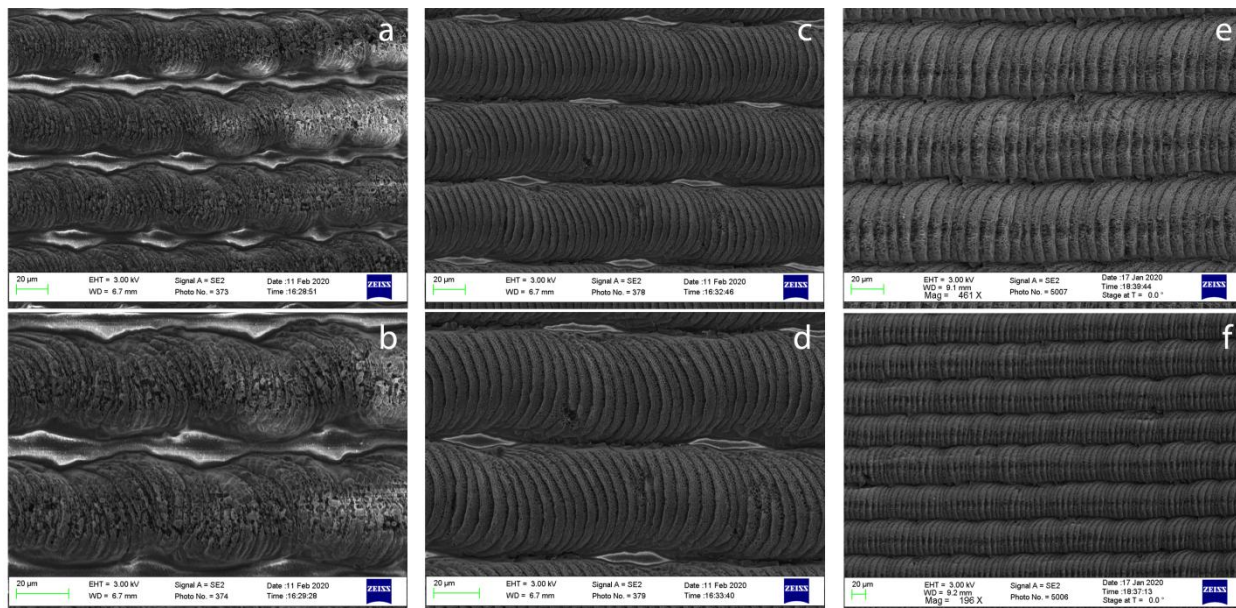


Figure S2. LSE fabrication optimization. (a,b), (c,d) and (e,f) were fabricated at a different duty cycle (i.e. intensity) of the laser: 0.4%, 0.8% and 3%. At the lowest exposure intensity the tracks are not merged, resulting in poor performance of the electrodes. 3% duty cycle was found to be optimal as the tracks were merged and the graphitic carbon layer preserved good quality. Further increase in power resulted in the overexposure and thus degradation of the scribed layer.

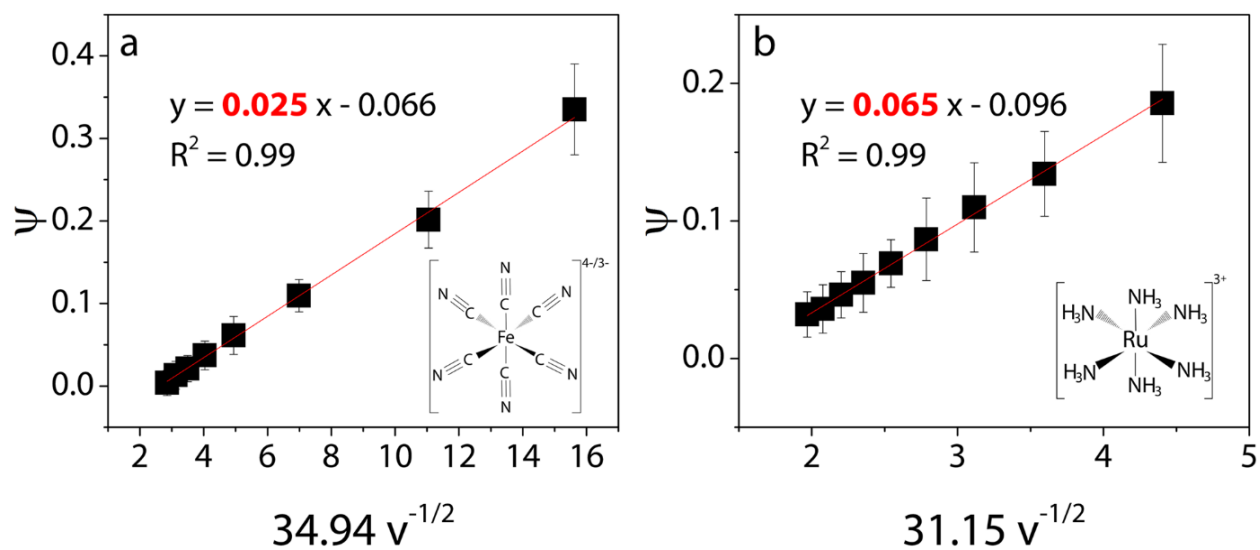


Figure S3. Plots of (a) Ψ vs. $34.94 v^{-1/2}$ for 5 mM $[\text{Fe}(\text{CN})_6]^{4-/3-}$ and (b) Ψ vs. $31.15 v^{-1/2}$ for 5 mM $[\text{Ru}(\text{NH}_3)_6]^{3+}$ solutions containing 0.1M KCl, 0.01M PBS (pH 7.4). The factors of 34.94 and 31.15 were calculated from the equation $[\pi D n F / (RT)]^{-1/2}$.

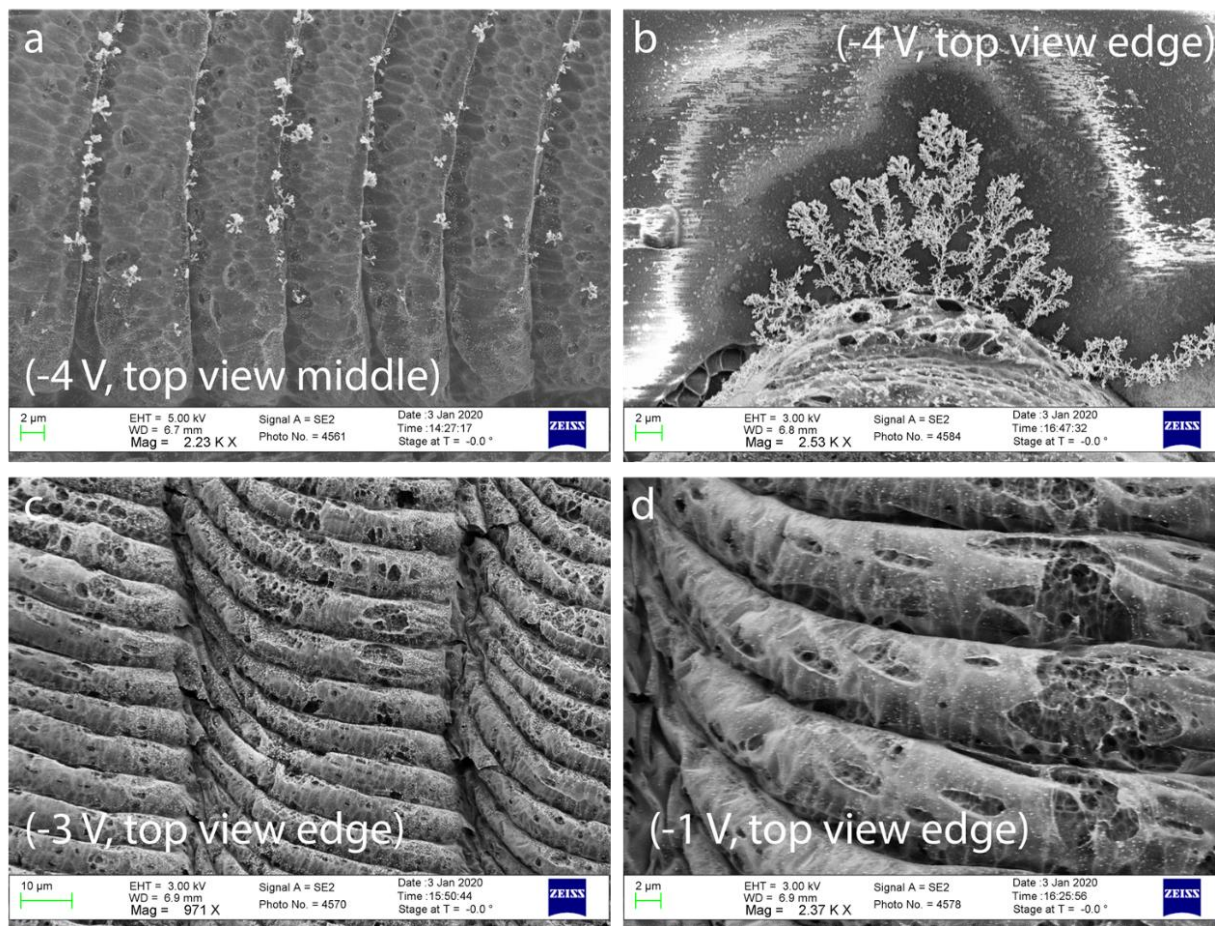


Figure S4. SEM images of LSE-Cu electrodes prepared at -4 V (a and b), - 3 V (c) and -1 V (d)